

1. Which of the following is **not** true about hard water?
- A. Damages fabric during washing
  - B. Leaves no traces when boiled
  - C. Soap is wasted in hard water during washing
  - D. Hard water damages iron pipes
2. In the skin, sweat glands are found in the
- A. epidermis
  - B. sweat pores
  - C. dermis
  - D. sweat duct
3. Which one of the following will determine the volume of sound produced by a stringed instrument?
- A. Length of the wire
  - B. Thickness of the wire
  - C. Force applied to pluck the wire
  - D. Tightness of the wire
4. Which one of the following weather instruments does **not** work under the principle that matter contains space?
- A. Windvane
  - B. Windsock
  - C. Liquid thermometer
  - D. Rain gauge
5. Inclined planes make work easier by
- A. increasing the effort applied
  - B. decreasing the effort applied
  - C. increasing the effort distance
  - D. reducing the work done
6. The following are characteristics of a certain state of matter
- (i) It has a definite mass
  - (ii) Its volume is indefinite
  - (iii) It changes state on cooling
  - (iv) It expands most on heating
- The example of matter described above is
- A. stone
  - B. iron
  - C. kerosene
  - D. water vapour
7. Which one of the following is the last stage in the process of birth?
- A. Breaking of the amnion sac
  - B. Contraction of the uterine wall
  - C. Cutting of the umbilical cord
  - D. Removal of the afterbirth
8. Breastfeeding is highly recommended for infants. Which of the following is **not** a reason for this?
- A. It is very hygienic
  - B. It boosts the baby's immunity
  - C. It is readily available
  - D. It cannot transmit any disease to the baby
9. From which of the sources given below would you find water that lathers easily with soap?
- A. Ocean
  - B. Dam
  - C. Rainfall
  - D. River

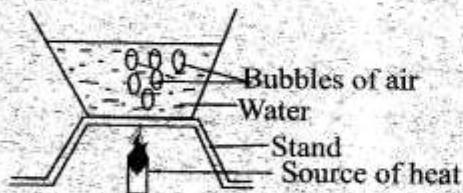
10. Which one of the following groups of farm animals can be kept for milk production?
- Camel and sheep
  - Goat and camel
  - Chicken and dairy cows
  - Pig and goat

11. Which one of the following is **not** an adaptation of plants that grow in wet areas?

They have

- air sacs that enable them to float on water
- large broad, flat leaves that enable them to float
- flexible stems
- thick cuticle to help them store water

12. Some pupils set up the experiment below to investigate a certain matter.



After heating, they observed some bubbles rising in the water. What was their conclusion?

- Water exerts pressure
- Air expands when heated
- Water has dissolved gases
- Matter occupies space

13. A child had the following signs and symptoms.

- The skin appeared pale
- Fingernails appeared white
- Felt like fainting and dizzy

The child is also **likely** to

- have wrinkled face
- have sores at the corners of the mouth
- have brittle bones
- have constant headache

14. Which of the following pairs of internal livestock parasites are **commonly** found in the lungs of an animal?

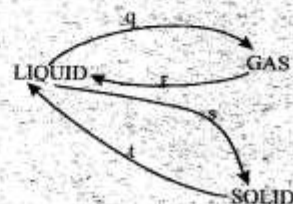
- Lungworms and hookworms
- Liverflukes and tapeworms
- Lungworms and liverflukes
- Hookworms and tapeworms

15. The following are effects of drug abuse.

Which pair consists of social effects only?

- Convulsion and drug induced accidents
- Drug addiction and withdrawal symptoms
- Truancy and marital conflicts
- Theft and loss of concentration

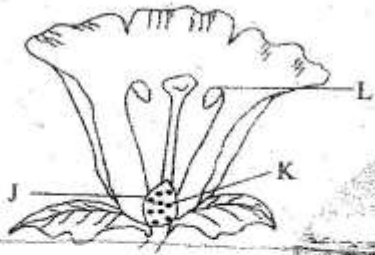
16. Processes *q*, *r*, *s* and *t* in the chart below bring about changes in the state of matter.



The processes that require an increase in temperature are

- q* and *t*
- s* and *r*
- q* and *s*
- t* and *r*

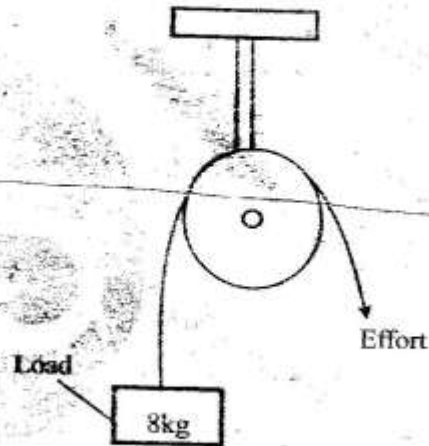
17. The diagram below shows parts of a flower



Which one of the following is likely to happen if the part marked L is cut when the flower is still young?

- A. Self pollination would not take place
  - B. J would not develop to a fruit
  - C. Fertilization would not take place
  - D. K would not develop to a seed
18. Which one of the following is **not** a function of the placenta?
- A. It allows the exchange of gases between the foetus and the mother
  - B. It lubricates the foetus
  - C. It prevents harmful materials from reaching the foetus
  - D. It allows the passage of absorbed food materials to the foetus
19. Which one of the following components of the environment takes the largest part of the earth's surface?
- A. Soil
  - B. Air
  - C. Water
  - D. Plants

20. The diagram below shows a single fixed pulley.



Which one of the following statements is **false** about the pulley?

- A. The effort used is slightly less than the mass of the load
  - B. The load moves the same distance as the effort
  - C. It makes work easier by changing the direction of force
  - D. The effort used is slightly more than the load
21. Which one of the following substances is **not** likely to pollute air?
- A. Aerosol sprays
  - B. Lead from petrol
  - C. Burning tyres and plastics
  - D. Organic refuse

22. The **main** reason why compost manure should be turned occasionally is to
- allow air circulation
  - make the compost moist
  - introduce more bacteria in the compost pit
  - allow fast and uniform decomposition

23. The following activities take place in the body during exhalation. Which one does **not**?

- The diaphragm moves upwards
- The chest cavity increases
- The volume of the lungs decrease
- The ribs move downward and inwards

24. Which one of the following materials can be attracted by a magnet?

- Steelwool
- Aluminium foil
- Copper coil
- Silver coin

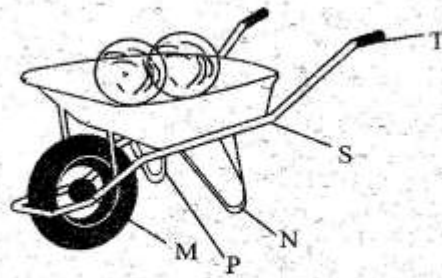
25. Below is an energy transformation  
 Mechanical → Electrical → heat → light  
 In which of the following materials can the above transformation take place?

- Bicycle dynamo
- Car battery
- Radio
- Electric bulb

26. The following foods can be preserved in a deep freezer **except**

- milk
- tomatoes
- fish
- meat

27. The diagram below shows a wheelbarrow.



The effort needed to push the wheelbarrow can be decreased by

- reducing the length between N and P
- increasing the length between S and T
- reducing the length between S and T
- reducing the length between M and N

28. Which of the following pairs of plants have root nodules?

- Peas and beans
- Wheat and tomatoes
- Cabbage and millet
- Rice and maize

29. Which one of the following animals can be classified in the same group as a spider?

- Mosquito
- Tick
- Grasshopper
- Wasp

30. Energy can be conserved in the following ways **except** using

- energy sparingly
- energy efficient devices
- renewable sources of energy
- a traditional jiko for cooking

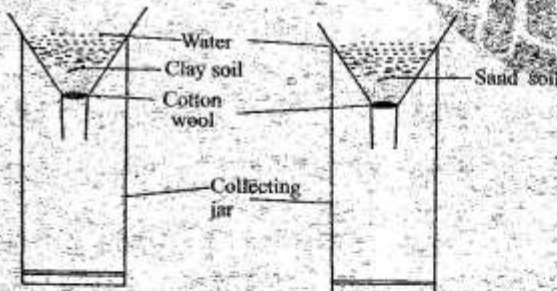
31. Which one of the following birds has a short, strong, sharp and hooked beak for cutting and tearing flesh?

- A. Eagle
- B. Duck
- C. Sunbird
- D. Hen

32. Three of the following statements are true about drugs. Which one is false?

- A. All drugs have an effect in the body
- B. All medicines are drugs
- C. All drugs are medicines
- D. Some drugs are obtained from plants

33. The diagram below shows a set-up that was used by some pupils to investigate a certain property of soil.



The pupils did **not** get the correct results. Which mistake did they make? They

- A. used the same size of funnels
- B. added different amounts of water in the funnel
- C. used equal amount of soil
- D. used different sizes of collecting jars

34. Three of the following are signs and symptoms of food poisoning. Which one is **not**?

- A. Blood in faeces and urine
- B. Abdominal pains
- C. Diarrhoea
- D. Swollen limbs

35. Which one of the following is the **best** method of handling plastic waste bottles?

- A. Burning them
- B. Recycling
- C. Throwing them in a pit latrine
- D. Burying them deep in the soil

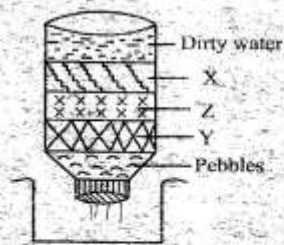
36. Which one of the pairs of liquids will form two layers when mixed?

- A. Kerosene and petrol
- B. Water and spirit
- C. Diesel and engine oil
- D. Methylated spirit and petrol

37. Which of the following materials will **not** allow light to pass through it?

- A. Skylight
- B. Fresh milk
- C. Tracing paper
- D. Windscreen

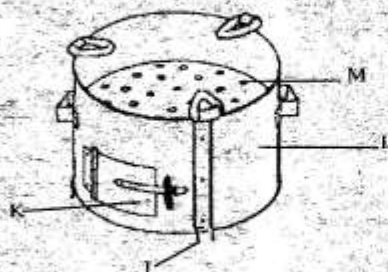
38. The diagram below shows a home made filter that was used to filter dirty water.



The materials X and Y respectively are

- A. charcoal and fine sand  
 B. fine sand and coarse sand  
 C. charcoal and coarse sand  
 D. coarse sand and fine sand
39. Which one of the following sexually transmitted infections can cause infertility in women?
- A. Syphilis  
 B. Chancoid  
 C. HIV and AIDS  
 D. Gonorrhoea

40. The diagram below shows an ordinary jiko



Which of the part labelled J, K, L and M mainly makes the jiko not to be recommended for use?

- A. J                      B. K  
 C. L                      D. M

41. Which one of the following statements is true about the fibre in the food we eat?

- A. It has nutritive value  
 B. It facilitates constipation  
 C. It provides energy  
 D. It helps in emptying bowels

42. Which one of the following is an advantage of friction?

- A. Tears and wears out things  
 B. Stopping vehicles from moving  
 C. Causes a lot of noise  
 D. Production of unwanted heat

43. Which of the following is **not** a control measure of HIV and AIDS?

- A. Isolating those who are infected  
 B. Creating public awareness  
 C. Campaigns through the radio  
 D. Mass education through drama and story telling

44. Which one of the following sources of energy consists of only sources that have chemical energy?

- A. Food, car battery, bicycle dynamo  
 B. Bicycle dynamo, dry cell, charcoal  
 C. Geothermal generator, car battery, cooking gas  
 D. Dry cell, food, firewood

45. Which one of the following consists **only** of foods that protect the body against diseases?

- A. Lemon, kales, ripe bananas
- B. Kale, spinach, groundnuts
- C. Rice, meat, pawpaw
- D. Fish, cabbage, potatoes

46. Three of the following are renewable sources of energy **except** one. Which one is it?

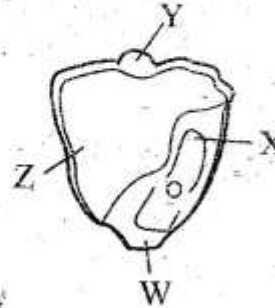
- A. Biogas
- B. Charcoal
- C. Sun
- D. Coal

47. The following activities are carried out when making a beam balance. The activities are **not** in the correct order.

- (i) Fix the stand to the base
  - (ii) Suspend the arm to find the balancing point
  - (iii) Suspend tins on both sides of the arm
  - (iv) Make a base, a stand and an arm
- Which is the fourth activity?

- A. (i)
- B. (ii)
- C. (iii)
- D. (iv)

48. The diagram below shows parts of a maize seed



Which of the parts labelled W,X,Y and Z represents the endosperm?

- A. W
- B. X
- C. Z
- D. Y

49. A certain disease has the following signs and symptoms:

- (i) Fever
- (ii) Dry coughs that have blood-stained sputum
- (iii) Pain in the chest
- (iv) Sweating at night

Which one of the following ways can be used to control the disease described above?

- A. Proper ventilation of houses
- B. Draining stagnant water near the homes
- C. Sleeping under a treated mosquito net
- D. Killing water snails

50. Which one of the following is both a sign and an effect of livestock diseases?

- A. Low quality products
- B. Death of the animals
- C. Transmission of disease to consumer
- D. Low yields