

1. The following are types of soil erosion

(i) *Splash erosion*

(ii) *Rill erosion*

(iii) *Sheet erosion*

(iv) *Gulley erosion*

The type of soil erosion that is caused by wind and water is

- A. i
- B. ii
- C. iii
- D. iv

2. Which one of the following factors would **not** increase the solubility of solutes?

- A. Temperature increase.
- B. Reducing the size of the solute.
- C. Reducing the amount of the solute.
- D. Decreasing the amount of the solvent.

3. The diagram below shows the behaviour of liquids in a container



Which property of liquids is demonstrated by the above experiment?

- A. Gases have no definite shape
- B. Liquids find their own level
- C. Liquids take the shape of the container
- D. Liquids have definite volume

4. Which one of the following is the function of air in sacs in hydrophytes?

- A. Increases the rate of transpiration.
- B. Enables plants to float.
- C. Prevents the stem from breaking.
- D. Allows pollination.

5. The quantity of matter in an object cannot be measured in

- A. newtons
- B. kilograms
- C. grams
- D. tonnes.

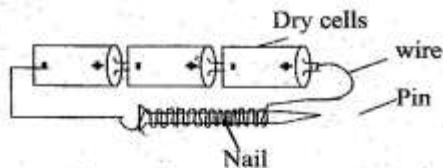
6. Which one of the following does NOT have chemical energy?

- A. Diesel
- B. Car battery.
- C. Bicycle dynamo.
- D. Charcoal.

7. What is the **main** function of the horny pad in herbivores?

- A. Allows the tongue to roll food while chewing.
- B. Helps in chewing the cud.
- C. Enables the incisors to cut grass.
- D. It is the space for taking in grass.

8. The set-up shown below can be used to make a temporary magnet



Which one of the following is the correct order of energy transformations that occurred, when the magnet was used to pick a pin?

- A. Chemical  $\rightarrow$  Electrical  $\rightarrow$  Electromagnetic  $\rightarrow$  Mechanical  
 B. Electrical  $\rightarrow$  Chemical  $\rightarrow$  Electromagnetic  $\rightarrow$  Mechanical  
 C. Chemical  $\rightarrow$  Electromagnetic  $\rightarrow$  Electrical  $\rightarrow$  Mechanical  
 D. Electromagnetic  $\rightarrow$  Electrical  $\rightarrow$  Chemical  $\rightarrow$  Mechanical

9. Which one of the following weather instruments works because of expansion of a liquid?
- A. Air thermometer  
 B. Rain gauge  
 C. Liquid thermometer  
 D. Windsock

10. Which one of the following pairs consists of leguminous pasture?
- A. Lucerne and Nandi setaria  
 B. Desmodium and Glycine  
 C. Maize stalk and clover  
 D. Napier grass and lucerne

11. Which one of the following statements about matter is **false**?
- A. Solids do not change the state when cooled.  
 B. Liquids expand more than gases when heated.  
 C. Solids have a definite shape.  
 D. Liquids have a definite volume.

12. Which one of the following is the most common way by which HIV is transmitted among the youth?
- A. Sharing of piercing needles.  
 B. Sexual intercourse.  
 C. Sharing of tooth brushes.  
 D. Blood transfusion.

13. Which one of the following pairs consists of non-renewable sources of energy **only**?
- A. Coal and wind.  
 B. Cow dung and petrol.  
 C. Natural gas and firewood.  
 D. Kerosine and coal.

14. In which of the following activities is friction **not** useful?
- A. Closing a door hanging on a hinge.  
 B. Sharpening a knife.  
 C. Writing on a paper.  
 D. Walking on a slippery floor.

15. The following waste products are excreted by the skin **except**
- A. excess water  
 B. urine  
 C. urea  
 D. lactic acid

16. Which one of the following is NOT a sign of ill health in livestock?
- A. Rough coat.
  - B. Loss of weight.
  - C. Stunted growth.
  - D. Lower yields.

17. Which of the two liquids given below are miscible?
- A. Water and diesel.
  - B. Milk and petrol.
  - C. Methylated spirit and milk.
  - D. Kerosine and alcohol.

18. Which one of the following pairs of drugs consists of a depressant and a stimulant?
- A. Khat and tobacco
  - B. Cobbler's glue and heroin
  - C. Alcohol and cocaine
  - D. Caffeine and bhang

19. In which of the following practices is water re-used?
- A. Harvesting rain water from the roof for domestic use
  - B. Storing water in dams to be used in irrigation
  - C. Using dirty water from the kitchen for watering plants
  - D. Treating dirty water for domestic use.

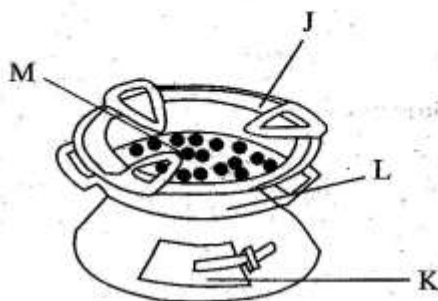
20. A bowl made of iron may float when placed on water because of its

- A. weight
- B. mass
- C. material
- D. shape

21. The following are methods of managing domestic wastes **except**

- A. incineration
- B. preparing of compost manure
- C. reducing
- D. recycling

22. The diagram below shows an improved jiko



Which letter shows the part of the jiko which greatly conserves energy?

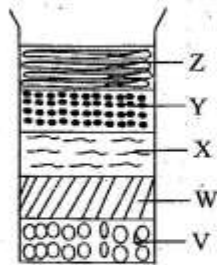
- A. M
- B. J
- C. K
- D. L

23. Which of the following simple machines belong to the same group?
- A. Ladder and staircase.
  - B. Claw hammer and flag post.
  - C. Staircase and pulley.
  - D. Screw and wheelbarrow.

24. The following are signs of food poisoning **except**
- A. violent diarrhoea
  - B. vomiting
  - C. severe stomachache
  - D. coughing.

25. Which of the following statements is **incorrect**?
- A. Hard water wastes soap.
  - B. Rainwater may contain dissolved gases.
  - C. Hard water causes clogging of pipes.
  - D. Soap in soft water forms scum.

26. Jane put some dry soil in a glass with water and shook it thoroughly. She left the materials to settle as shown below



Which layer comprises of water mainly?

- A. Y
- B. W
- C. V
- D. X

27. Which of the following groups of plants have the same type of root system?

- A. Carrot, cassava, rice
- B. Cabbage, blackjack, bean
- C. Maize, peas, tomato
- D. Cactus, wheat, carrot

28. The following are advantages of breast feeding a child. Which one is **not** Breast milk

- A. is easy to digest
- B. provides immunity against diseases
- C. allows the mother and child to bond
- D. can transmit some diseases to the child.

29. Which one of the following does **not** explain how xerophytes survive in their habitats? They

- A. shed their leaves
- B. have thick cuticle
- C. have broad leaves
- D. have deep roots

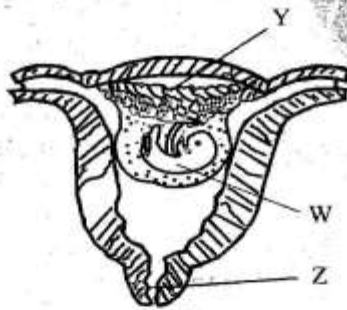
30. Which one of the following does **not** function the same as wind driven turbine when used to produce electricity?

- A. Car battery
- B. Petrol generator
- C. Bicycle dynamo
- D. Geothermal generator

31. Which one of the following is an adaptation of animals to flight?
- Streamlined body.
  - Webbed feet.
  - Scales.
  - Strong hind limbs.

32. Which one of the following examples of levers has the position of load between the effort and the fulcrum?
- Spade.
  - Wheel barrow.
  - Claw hammer.
  - Crow bar.

33. The diagram below shows foetal development in a human being



Which one of the following is NOT function of the part labelled y?

- Keeps the foetus warm
  - Facilitates transfer of waste products
  - Supplies food from the mother's blood to the foetus
  - Facilitates exchange of gases between the mother and the foetus.
34. The following are control measures for HIV and AIDS. Which one is NOT?
- Isolating the HIV positive patients
  - Voluntary counselling and testing
  - Campaigning through various media
  - Creating public awareness

35. The following are some of the physical changes that take place during adolescence
- Pimples may appear on the face
  - Pubic hair grows
  - Chest and shoulders become broader
  - Menstruation
  - Voice breaks
  - Hips become broader
- Which of the changes take place in girls **only**?

- i and ii
- ii and iii
- iv and v
- iv and vi

36. Which one of the following does **not** pollute soil?

- Decaying animals.
- Acidic rainfall.
- Burning of vegetation.
- Farm chemicals.

37. Which of the following gases dissolve in water to form acidic rain?

- Sulphur dioxide and oxygen.
- Carbon dioxide and sulphur dioxide.
- Nitrogen and carbon dioxide.
- Oxygen and Nitrogen.

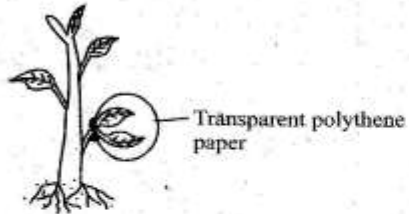
38. The following are signs and symptoms of a sexually transmitted infection

- Causes madness and death if not treated
- Sores in the mouth, lips and fingers
- Painful rash all over the body
- Causes paralysis and heart diseases

The above infection is likely to be

- gonorrhoea
- syphilis
- chancroid
- HIV and AIDS.

39. Class 5 pupils carried out the experiment shown below



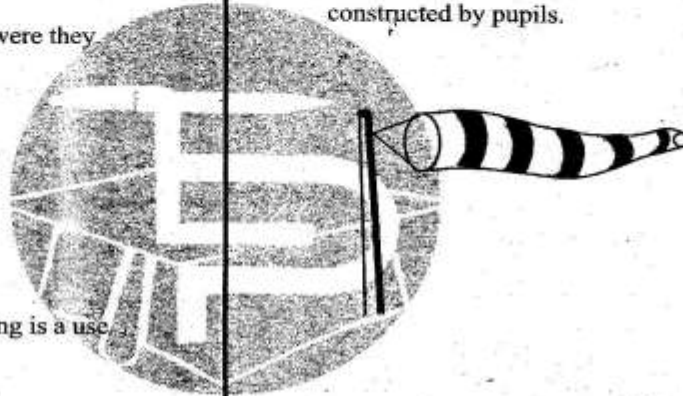
What function of leaves were they investigating?

- A. Photosynthesis
  - B. Transpiration
  - C. Food storage
  - D. Absorption of water
40. Which one of the following is a use of water in the farm?
- A. Bathing
  - B. Making fountains
  - C. Rearing fish
  - D. Drinking.
41. Which of the following methods of food preservation preserves food by dehydrating the food?
- A. Canning.
  - B. Salting.
  - C. Use of smoke.
  - D. Using honey.

42. Which one of the following materials is an insulator?

- A. Clay.
- B. Aluminium.
- C. Steel.
- D. Iron.

43. The diagram below represents a windsock constructed by pupils.



Which one of the following statements is **not** true?

- A. It is placed in an open area.
  - B. It has two openings.
  - C. It shows strength and direction of wind.
  - D. It is kept in a weather house.
44. Which one of the following pairs of livestock parasites can be controlled by dipping?
- A. Ticks and fleas.
  - B. Mites and liver flukes.
  - C. Round worms and ticks.
  - D. Louse and tapeworms.

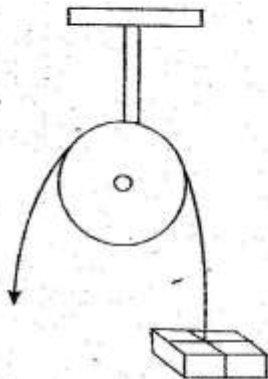
45. Which one of the following is **not** a symptom of tuberculosis?

- A. Sweating at night
- B. Coughing of blood
- C. Fever and tiredness
- D. Body rash

46. Which one of the following pairs consists of soil conservation methods that control gully and splash erosion respectively?

- A. Mulching and planting vegetation cover
- B. Building gabions and mulching
- C. Cover cropping and controlling use of farm chemicals
- D. Terracing and contour farming.

47. The diagram below shows a single fixed pulley.



The above pulley makes work easier by

- A. decreasing the amount of work done
- B. increasing the effort used
- C. changing the direction force.
- D. reducing friction.

48. Which one of the following is a sign of unhealthy crops?

- A. Lower yields.
- B. Stunted growth.
- C. Reduced quality of produce.
- D. Robust growth.

49. Which of the following statements is NOT true about all veins?

- A. Blood pressure in them is low
- B. They carry blood to the heart
- C. They carry deoxygenated blood
- D. They have thin walls

50. Which one of the following statements is **false**?

- A. Urinary bladder stores urine
- B. The kidneys are bean-shaped and dark red in colour
- C. The skin protects the body from germs
- D. The lungs control body temperature