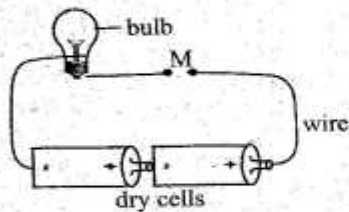


1. Which one of the following is **not** an effect of abusing intoxicating inhalants?
- A. Difficulty in breathing.
 - B. Lack of sleep.
 - C. Vomiting.
 - D. Dizziness.

2. Which of the following pairs consists of characteristics of insect pollinated flowers **only**?
- A. Light pollen grains, brightly coloured.
 - B. Scented, powdery pollen grains.
 - C. Sweet scented, brightly coloured.
 - D. Small in size, large number of pollen grains.

3. The following are uses of moving air. Which one is **not**?
- A. Blowing soil away.
 - B. Sailing boats.
 - C. Moving windmills.
 - D. Winnowing.

4. Below is a simple circuit.



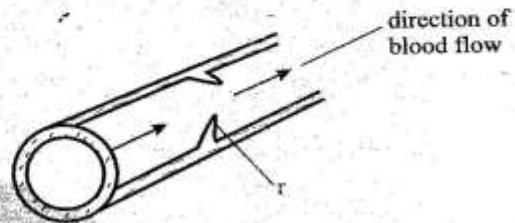
Which one of the following materials **cannot** be used to complete the gap marked **M**.

- A. Iron nail
- B. Steel wool
- C. Copper coin
- D. Ball pen casing

5. Which one of the following pairs consists of drugs that are harmful but **not** prohibited in Kenya?

- A. Heroin and cobbler's glue.
- B. Cocaine and tobacco.
- C. Alcohol and khat.
- D. Bhang and mandrax.

6. The diagram below shows a blood vessel.



What is the function of the structure marked **r**?

- A. Prevents backflow of blood.
- B. Prevents flow of blood.
- C. Directs the blood backward.
- D. Reduces the pressure in blood.

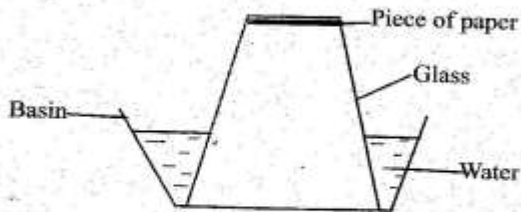
7. The following materials are required when investigating pressure in liquids **except**

- A. tin can
- B. water
- C. nail
- D. cotton wool

8. The **best** method of transporting water over a long distance is by using

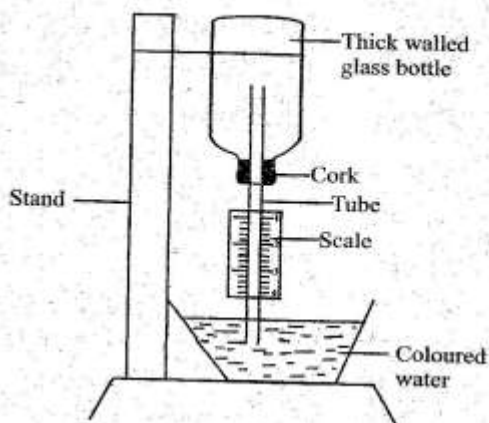
- A. jerrycans
- B. pipes
- C. using cans
- D. tankers

9. The experiment below was setup by class five pupils.



What were the pupils investigating?

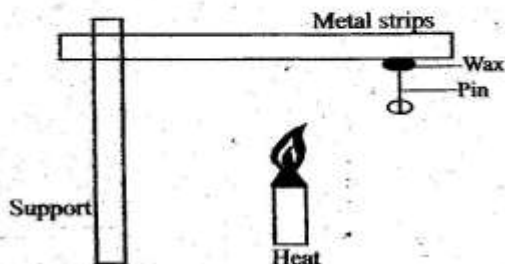
- A. Air has weight.
 B. Liquids occupy space.
 C. Air occupies space.
 D. Liquids exert pressure.
10. Which of the following forms of energy can travel through empty space?
 A. Light and sound.
 B. Sound and heat.
 C. Heat and light.
 D. Light and electricity.
11. Which one of the following is an effect of HIV infection on an individual?
 A. Sadness in the family.
 B. Lowering of self esteem.
 C. Loss of income.
 D. Decrease in economic production.
12. Standard 6 pupils constructed the weather instrument below.



Which of the following is the mistake made by the pupils?

- A. Using a thick-walled glass bottle.
 B. The straw was so narrow.
 C. The scale was wrongly labeled.
 D. They used air-tight cork.
13. Simon inhaled a poisonous gas from an industry. Which chamber of the heart did the poison reach first?
 A. Right auricle
 B. Right ventricle
 C. Left auricle
 D. Left ventricle
14. Which one of the following will pollute water only?
 A. Used oil
 B. Untreated sewage
 C. Factory wastes
 D. Farm chemicals
15. The following are importance of fibre in the diet **except** that it
 A. helps to empty the bowel.
 B. helps in digestion of food.
 C. prevents constipation.
 D. helps in movement of food.

16. A pin was fixed to one end of a metal strip using a candle wax. The metal was heated as shown on the diagram below.

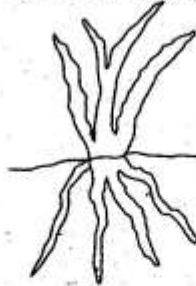


The conclusion that can be drawn from the above experiment is that

- A. metals conduct heat.
 B. metals expand when heated.
 C. wax is a good conductor of heat.
 D. the wax melts when heated.
17. The following are characteristics of a certain weed.
- Has white flowers.
 - Has black fruits with hooks on one end.
 - It is upright.
- The weed described above is likely to be
- A. oxalis
 B. pigweed
 C. wandering jew
 D. blackjack
18. The following are characteristics of a certain type of soil.
- Sticky when wet.
 - Has best water retention.
 - Has small air spaces.
- The type of soil described above is also likely to
- A. have the lowest capillarity.
 B. make the longest ribbon.
 C. have best drainage.
 D. spread easily when dry.

19. The function of plasma is to
- A. help in clotting of blood.
 B. fight germs.
 C. transport food.
 D. combine with oxygen.
20. Which one of the following is **not** a way of maintaining simple tools?
- A. Sharpening all tools.
 B. Using them for the right purpose.
 C. Proper storage.
 D. Oiling and greasing moving parts.
21. Which one of the following sources of electricity pollutes the environment **mostly**?
- A. Wind-driven generators
 B. Geothermal generators.
 C. Bicycle dynamo.
 D. Diesel-driven generators.
22. Which of the following pairs of materials consists of **only** non-magnetic materials?
- A. Aluminium foil and a glass rod.
 B. Steel spoon and staple pin.
 C. Nickel and cobalt.
 D. Copper wire and iron nail.
23. Which of the following methods of preserving food preserves food by making the bacteria inactive?
- A. Use of honey.
 B. Canning.
 C. Use of low temperature.
 D. Smoking.

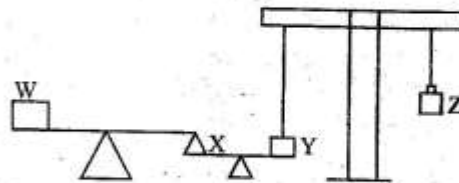
24. The diagram below shows a type of root.



- Which one of the plants named below does **not** have this type of root?
- A. Wheat
B. Millet
C. Grass
D. Peas
25. What is the importance of adding farmyard manure to a compost manure? To
- A. add nutrients.
B. provide nutrients to bacteria.
C. introduce bacteria.
D. speed up decomposition.
26. Which one of the following consists of a pair of storage pests?
- A. White ants and cutworms.
B. Rats and aphids.
C. Aphids and mice.
D. White ants and weevil.
27. Which one of the following need **not** be the same when comparing capillarity in different types of soil?
- A. Diameter of the tubes.
B. Amount of water used.
C. Amount of each type of soil.
D. Amount of cotton wool.

28. Which of the following pairs consists of major living components of the environment?
- A. Air and plants.
B. Water and animals.
C. Plants and animals.
D. Water and soil.
29. The following are methods of conserving water **except**
- A. using overhead irrigation method.
B. harvesting rain water.
C. using water sparingly.
D. re-using water.
30. Which of the following animal feeds consists of **only** conserved feeds?
- A. Salt licks and layers mash.
B. Lucerne and desmodium.
C. Stargrass and rhodes grass.
D. Hay and silage.
31. Which one of the following changes takes place during adolescence in boys **only**?
- A. Fast body growth.
B. Chest and shoulders broaden.
C. Growth of pubic hair.
D. Pimples may appear on the face.

32. Study the diagram below.



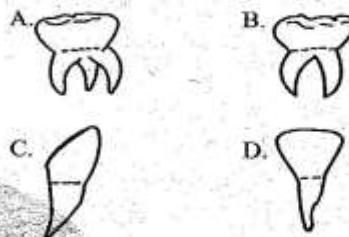
If a little weight is added to **X** which of the following is **true** about what would happen?

- A. W would go down while Z would go up.
B. Y would go up while W would go down.
C. Z would go down while W would go up.
D. Y would go up and Z would go up.

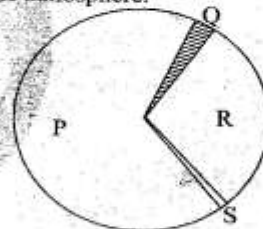
33. The following are safety measures against lightning. Which one is **not**?
- Avoid swimming when it is raining.
 - Avoid sheltering under trees.
 - Avoid touching bare or naked wires.
 - Avoid walking in open areas during thunderstorms.
34. Which of the following methods of controlling human intestinal worms is the **most** effective?
- Proper sanitation.
 - Regular deworming.
 - Proper cooking of food.
 - Washing food eaten raw properly.
35. Which one of the following groups of food has body building food **only**?
- Rice, eggs, carrots, green grams.
 - Fruits, millet, ripe bananas, beans.
 - Chapati, potatoes, meat, eggs.
 - Peas, eggs, fish, milk.
36. Which one of the following materials can be the **best** to use for making the handles of cooking utensils?
- Aluminium
 - Plastic
 - Iron rod
 - Silver
37. The following statements are **true** about force. Which one is **not**? Force
- makes moving objects change direction.
 - stops objects from moving.
 - makes objects to change state.
 - can cause deformation.

38. Which one of the following is **not** an effect of livestock parasites?
- Anaemia
 - Irritation
 - Low yields
 - Rough coat.

39. Which one of the following is **not** found in a deciduous set?



40. The pie-chart below represents composition of air in the atmosphere.



Which portion represents the gas that is used in photosynthesis?

- P
 - Q
 - R
 - S
41. Which one of the following lists consists of human internal parasites **only**?
- Hookworms, tsetse flies, liverflukes.
 - Threadworms, lungworms, fleas.
 - Roundworms, liverflukes, tapeworms.
 - Lungworms, ticks, threadworms.

42. People who live in areas with stagnant water

- are likely to suffer from
- A. tuberculosis and malaria.
 - B. bilharzia and malaria.
 - C. bilharzia and tuberculosis.
 - D. cholera and bilharzia.

43. Study the following food chain.

Grass → Grasshoppers → Frogs → Snakes

Which one of the following would **most** likely happen immediately if all snakes are killed?

- A. Frogs would increase.
- B. The amount of grass would decrease.
- C. Grasshoppers would increase.
- D. Frogs would decrease in number.

44. The following are characteristics of a certain type of cloud:

- i) Has flat base.
- ii) White in colour.
- iii) Found high in the sky.

The cloud is also likely to

- A. cover the whole sky.
- B. be dark grey in colour.
- C. indicate heavy rainfall.
- D. look like bundles of cotton wool.

45. The following are ways of controlling external parasites **except**

- A. spraying
- B. rotational grazing
- C. deworming
- D. dipping

46. Sound pollution can cause all the following **except**

- A. deafness
- B. blindness
- C. lack of sleep
- D. irritation

47. The following are stages of HIV infection.

- i) window stage.
- ii) asymptomatic stage.
- iii) symptomatic stage.
- iv) full blown AIDS.

During which stage will the medical test indicate the presence of HIV in the blood but the person shows no visible signs of HIV and AIDS?

- A. ii
- B. iv
- C. i
- D. iii

48. The **correct** order for separating the mixture of salt, iron filings and sand is

- A. dissolving → filtering → evaporating → use of magnet.
- B. picking → dissolving → filtering → evaporating.
- C. dissolving → use of magnet → filtering → evaporating.
- D. use of magnet → dissolving → filtering → evaporation.

49. Which one of the following pairs consists of **only** macro nutrients?

- A. Iron and copper.
- B. Phosphorus and potassium.
- C. Sulphur and boron.
- D. Manganese and zinc.

50. A patient had the following signs and symptoms.

- i) Prolonged dry cough.
- ii) Fever and tiredness.
- iii) Sweating at night.
- iv) Chest pains.

Which one of the following is a preventive measure of the disease with the above signs and symptoms?

- A. Live in well ventilated room.
- B. Draining stagnant water.
- C. Wearing gumboots.
- D. Keeping toilets and pit latrine clean.