

GRADE 8 MID TERM 2 MAY 2022

SCIENCE

TARGETER WINGS STANDARD EIGHT - YEAR 2022

CONTINUOUS ASSESSMENT TEST

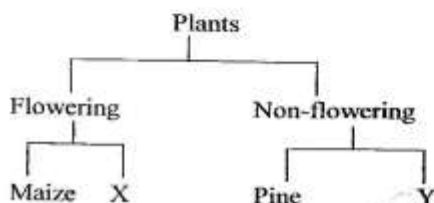
SCIENCE



TIME: 1hr 40 mins

- Mass education on HIV and AIDS can be conducted through the following **except**
 - public rallies
 - workshops
 - seminars
 - job interviews.

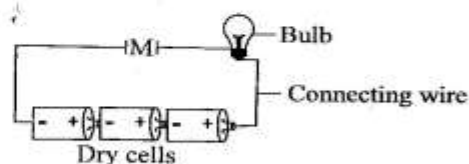
- The chart below shows a simple classification of plants



Which one of the following pairs represents X and Y?

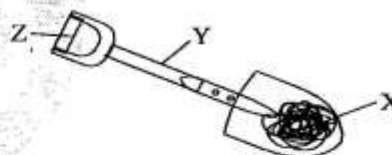
- | | |
|--------------|----------|
| X | Y |
| A. Carrots | Sisal |
| B. Kale | Onion |
| C. Moss | Cypress |
| D. Sugarcane | Fern |
- Which one of the following would make accurate and better reading of little rainfall in a raingauge?
 - Using a wide bottle.
 - Keeping a raingauge in the open.
 - Using a narrow measuring cylinder.
 - Using a wide funnel.
 - Which one of the following pairs consists of field pests only?
 - Stalkborer and weevil.
 - White ants and rats.
 - Locusts and rats.
 - Weaver birds and cutworms.
 - Three of the following are advantages of mulching. Which one is **not**?
 - Suffocates weeds.
 - Control pests
 - Control soil erosion.
 - Conserves water.

- The diagram below represents a set-up that can be used to investigate good and poor conductors of electricity



Which one of the following materials when used to connect wires at position M would make the bulb not to light?

- | | |
|------------------|-----------------|
| A. Plastic comb. | B. Silver coin. |
| C. Iron nail. | D. Copper wire. |
- Which one of the following waste products is **not** excreted by the kidneys?
 - Water.
 - Carbon dioxide.
 - Urea.
 - Mineral salts.
 - The diagram below shows a lever

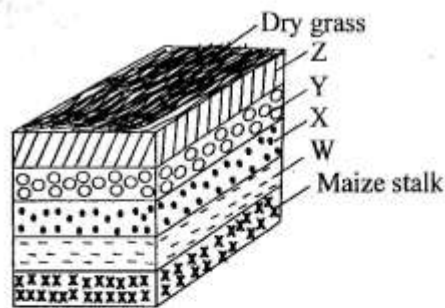


Which one of the following represents the parts labelled X, Y and Z respectively?

- | | | |
|------------|----------|----------|
| X | Y | Z |
| A. Effort | Load | Fulcrum |
| B. Fulcrum | Effort | Load |
| C. Load | Effort | Fulcrum |
| D. Load | Fulcrum | Effort |
- Which one of the following statements is correct about reproduction in human beings?
 - Fertilisation takes place in the uterus.
 - The zygote gets implanted on the walls of the uterus.
 - Fertilisation takes place in the oviduct.
 - Menstruation takes place in the fallopian tube.

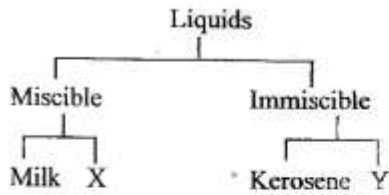
10. In the human breathing system cleaning and warming of air occur at the
 A. lungs and nose
 B. nose and trachea
 C. lungs and trachea
 D. windpipe and bronchus.
11. The component of soil that improves its water holding capacity is
 A. organic matter B. living organisms
 C. inorganic particles D. mineral salts.
12. Which of the following is **not** a myth about AIDS?
 A. AIDS is real.
 B. AIDS does not affect fat people.
 C. AIDS only affects immoral people.
 D. AIDS does not exist.
13. Which of the following combination makes up to 1.0% of air in volume?
 A. Oxygen and nitrogen.
 B. Inert gases and carbon dioxide.
 C. Nitrogen and inert gases.
 D. Carbon dioxide and oxygen.
14. Which one of the following statements is false about arteries? They
 A. are located deep in the body
 B. have valves
 C. carry blood under high pressure
 D. have thick elastic walls.
15. Which one of the following is an effect of HIV and AIDS to the nation?
 A. Poor health.
 B. Loss of income.
 C. Congestion in hospital.
 D. Lack of parental love.
16. Which of the following groups consists of oil crops **only**?
 A. Sunflower, coffee, beans.
 B. Cotton, groundnuts, cocoa.
 C. Sunflower, coconut, groundnuts.
 D. Coconut, groundnuts, carrots.
17. Friction is mostly needed when
 A. pushing a wheelbarrow
 B. walking down a hill
 C. moving crates of soda along a floor
 D. rotating the axle of a machine.

18. The following are characteristics of clouds
 (i) Have flat base
 (ii) Dark grey in colour
 (iii) Look like thick white cotton bundles
 (iv) Are rain bearing
 Which pair of characteristics are for cumulus clouds?
 A. i and iv B. ii and iii
 C. i and iii D. ii and iv
19. Which one of the following statements describes the function of the placenta?
 A. Produces ova.
 B. Protects the foetus from shock.
 C. Allows fertilisation to take place.
 D. Facilitates the transfer of waste products.
20. The most effective way of controlling AIDS especially for married couple is by
 A. being faithful.
 B. having one partner.
 C. using condoms.
 D. abstinence.
21. The diagram below shows a compost heap



- The purpose of layer Z is
 A. for aeration
 B. to introduce bacteria
 C. to add nutrients
 D. to feed the decomposers.
22. The following materials cannot be attracted by a magnet **except**
 A. cobalt B. zinc
 C. plastic D. aluminium.
23. Which one of the following animal parasites does not attack the liver of livestock?
 A. Hookworms B. Liverflukes.
 C. Tapeworms. D. Roundworms.

24. The table below shows classification of liquids

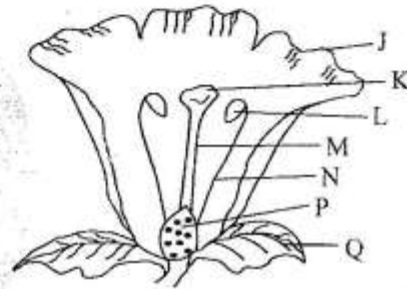


Which liquids would correctly fit at points X and Y?

- | X | Y |
|----------------------|-------------------|
| A. Water | Petrol |
| B. Methylated spirit | Water |
| C. Alcohol | Cooking oil |
| D. Diesel | Methylated spirit |
25. The following are ways of reducing friction **except**
- use of rollers
 - treading tyres
 - oiling and greasing
 - smoothing surfaces
26. Which of the following is **not** a source of current electricity?
- Wind.
 - Geothermal generator.
 - Dry cells.
 - Bicycle dynamo.
27. Which one of the following is **not** a sexually transmitted disease?
- Chancroid.
 - Gonorrhoea.
 - Typhoid.
 - Syphilis.
28. Mary used enough water to wash clothes. Which of the following **methods** of conserving water did she practise?
- Recycling water.
 - Using water sparingly.
 - Harvesting water.
 - Reusing.
29. Which one of the following levers when in use has the position of the effort between the fulcrum and the load?
- Claw hammer.
 - Spade.
 - Crowbar.
 - Wheelbarrow.

30. Which one of the following ways **cannot** be used to control liverflukes?

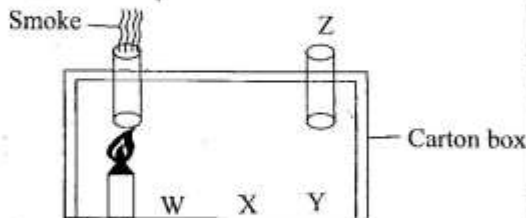
- Rotational grazing.
 - Dosing.
 - Drenching.
 - Spraying.
31. Which nutritional deficiency disease is correctly matched with its sign or symptom?
- Kwashiorkor - wrinkled face
 - Rickets - brown hair
 - Marasmus - sores at the corner of the mouth
 - Anaemia - fainting often.
32. The diagram below shows a cross-section of a flower.



In which part does the pollen tube develop?

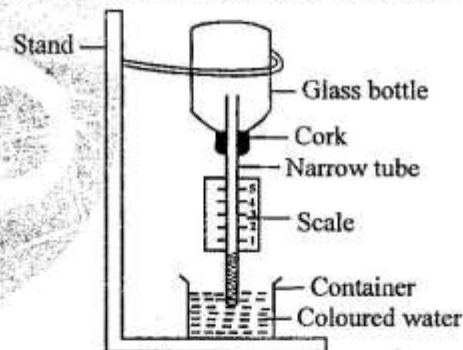
- N
 - M
 - Q
 - L
33. Which of the following components in atmosphere is released by plants during photosynthesis?
- Oxygen.
 - Nitrogen.
 - Carbon dioxide.
 - Rare gases.
34. Which one of the following factors makes an aluminium bowl to float on water?
- Type of material.
 - Size of material.
 - Shape of material.
 - Mass of material.
35. Which one of the following is **not** a preventive measure against bilharzia?
- Killing water snails using chemicals.
 - Draining stagnant water.
 - Observing cleanliness at all times.
 - Boiling drinking water to kill any germs in it.

36. Which one of the following is a group of fodder crops?
 A. Maize stalks, kikuyu grass, lucerne.
 B. Napier grass, lucerne, potato vines.
 C. Beans, napier grass, maize stalk.
 D. Rhodes grass, napier grass, lucerne
37. The diagram below represents a set-up that can be used to demonstrate heat transfer in gases



- For the demonstration to work a burning rag should be placed at
 A. Z
 B. Y
 C. X
 D. W
38. Which one of the following methods of food preservation is modern?
 A. Salting.
 B. Using low temperatures.
 C. Using honey.
 D. Smoking.
39. The following are factors that increase soil erosion **except**
 A. type of soil.
 B. lack of vegetation cover.
 C. human activities
 D. direction of wind.
40. Which one of the following is the last step when separating a mixture of sand and salt?
 A. Dissolving. B. Decanting.
 C. Filtering. D. Evaporation.
41. A card with the word LION written on it was placed in front of a mirror. Which one of the following shows how the word appeared in the mirror?
 A. ʎOɹɹ B. ʎOIL
 B. LION D. ɹIHOɹ
42. Standard five pupils observed and grouped some small animals. Which one of the following were correctly grouped?
 A. Ants, tick, housefly.
 B. Bee, moth, spider.
 C. Mite, weevil, cockroach.
 D. Moth, housefly, ant.

43. Irrigating kitchen garden with water from kitchen is
 A. harvesting water.
 B. using water sparingly.
 C. re-using water.
 D. recycling water.
44. Which one of the following plants stores food in the stem?
 A. Cassava. B. Irish potato.
 C. Sweet potato. D. Onion.
45. Which one of the following is **not** a reason for lighting a house?
 A. To warm ourselves.
 B. To discourage pests.
 C. For safety purpose.
 D. To read comfortably.
46. Which one of the following is **not** harmful to the environment?
 A. Burning charcoal in a closed room.
 B. Untreated sewage.
 C. Oil spillage from tankers.
 D. Dumping vegetable waste on the garden.
47. The diagram below shows an air thermometer



- What mistake was made in the set-up of the above instrument?
 A. Using a narrow tube.
 B. Coloured water.
 C. Labelling the scale.
 D. Using glass bottle.
48. Which of the following methods of grazing livestock is suitable to a farmer with large number of livestock?
 A. Paddockging. B. Stall feeding.
 C. Strip grazing. D. Herding.
49. Which of the following components of blood helps in blood clotting?
 A. White blood cell. B. Platelet.
 C. Red blood cell. D. Plasma.
50. A child who appears old with a wrinkled face should be given a diet rich in
 A. proteins B. carbohydrates
 C. balanced diet D. fats and oils.