

SCHOOL BASED EVALUATION TEST

D003

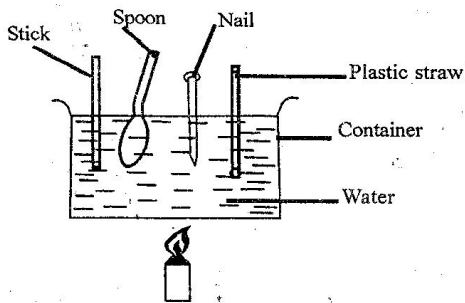
STD. 7 YEAR 2022

[7]

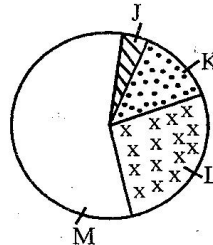
SCIENCE

Time: 1Hr. 40 Mins.

- The main function of the white blood cells is to ____
 - transport digested food to various body parts
 - transport oxygen to the lungs
 - fight disease causing organisms in the body
 - help in clotting of blood
- Which one of the following is a common characteristic between toad and shark?
 - Lay eggs
 - Have scales
 - Have internal fertilization
 - Breathe through the lungs
- Which one of the following is the first step when carrying out an experiment on drainage?
 - Measuring amount of soil in each funnel
 - Putting cotton wool in the funnel
 - Placing funnels on the collecting jar
 - Pouring equal amount of water in the funnel
- Which one of the following is the best way of controlling gulley erosion?
 - digging bench terraces
 - building porous dams
 - applying mulches
 - planting cover crops
- What is the main importance of water in the diet?
 - It prevents anaemia
 - It prevents constipation
 - It prevents deficiency diseases
 - Helps in digestion
- Pupils set up the following experiment to demonstrate a certain aspect of heat energy.
- The purpose of a switch in a simple electric circuit is to ____
 - reduce the current
 - complete the circuit
 - prevent overheating of the wires
 - create short circuit
- Which one of the following is the best way of controlling malaria?
 - destroying mosquito breeding places
 - sleeping under mosquito nets
 - taking anti-malaria drugs
 - applying mosquito repellants on the body
- Which of the following materials will form a homogenous solution when put together?
 - Milk and paraffin
 - Water and petrol
 - Spirit and kerosene
 - Cooking oil and paraffin
- The pie chart below shows the approximate percentages of the composition of air.

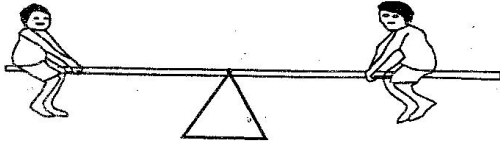


- The aspect being demonstrated is ____
- Convection in liquids
 - Poor and good conductors of heat
 - Heat transfer in liquids
 - Conduction of heat in materials

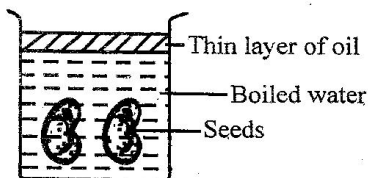


- Which one of the following is a use of the gas represented by letter J?
- Supporting burning
 - Making electric bulbs
 - Germination of seeds
 - Making plant food
11. Which of the following is not a characteristic of an insect pollinated flower?
- large and bright petals
 - long feathery anthers
 - a sweet scent
 - short stigma

12. The diagram below represent a see saw. It is mainly used for _____

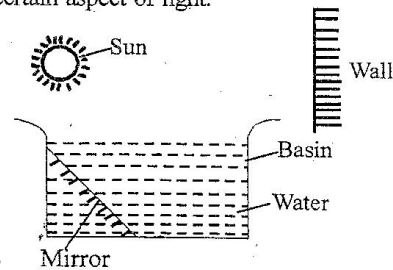


- A. comparing forces
 B. measuring volume
 C. comparing masses
 D. measuring weight
13. Below are signs and symptoms of a certain disease;
 (i) coughing
 (ii) skin rash
 (iii) blood in stool
 (iv) diarrhoea may occur
 The disease is likely to be _____
 A. Typhoid B. Cholera
 C. Malaria D. Bilharzia
14. Which of the following factors makes a cork to float on water?
 A. Shape of material B. Type of material
 C. Size of material D. Mass of material
15. Which of the following field pests attack the stem of plants only?
 A. Aphids and cutworms
 B. Rodents and locusts
 C. Stalkborers and cutworms
 D. Weevils and aphids
16. Which one of the following is a social effect of abusing drugs?
 A. Impaired judgement
 B. Truancy
 C. Coma
 D. Withdrawal symptoms
17. During a Science experiment, pupils set up materials as shown in the diagram below to investigate germination in plants

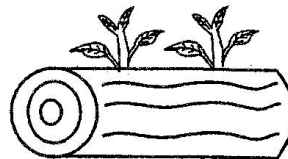


- The main reason of using oil is to investigate if;
 A. water is necessary for germination
 B. soil is necessary for germination
 C. warmth is necessary for germination
 D. air is necessary for germination
18. Which of the following weeds has bluish flowers and spreads on ground?

- A. Wandering jew B. Oxalis
 C. Mexican marigold D. Black jack
19. The diagram below was set up to demonstrate a certain aspect of light.



- The aspect of light being demonstrated is _____
 A. dispersion of light
 B. making of a rainbow
 C. refraction of light
 D. reflection of light
20. Below are characteristics of clouds;
 (i) irregular in shape
 (ii) flat base
 (iii) bring heavy downpour
 (iv) look like bundles of cotton wool
 (v) mountainous
 Which characteristics describes Nimbus clouds?
 A. i, ii, iv, v B. i, iii, v
 C. ii, iv, v D. iii, iv, v
21. Which method of traditional food preservation removes moisture from the food preserved?
 A. Use of honey
 B. Freezing
 C. Use of a charcoal cooler
 D. Salting
22. Which one of the following is the most expensive method of rotational grazing?
 A. Strip grazing B. Tethering
 C. Paddockging D. Herding
23. Below are uses of light energy. Which one is not?
 A. Reading clearly B. Photosynthesis
 C. Controlling traffic D. Warming the house
24. The diagram below represents plants growing on a decaying log of wood.

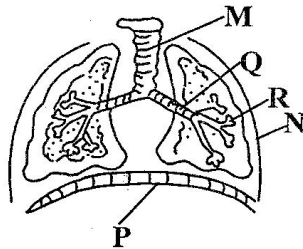


- Which interdependence between plants is shown above?
 A. Habitat B. Shade
 C. Support D. Shelter

25. Which of the following pairs of drugs are illegal in Kenya?
 A. Tobacco and cocaine
 B. Mandrax and alcohol
 C. Bhang and nicotine
 D. Miraa and alcohol
26. Which of the following livestock feeds is not a fodder?
 A. Molasses
 B. Maize stalks
 C. Napier grass
 D. Sweet potato vine
27. What happens to a snake when it basks in the sun? Its body temperature _____
 A. remains the same B. falls
 C. rises and then falls D. rises
28. If the style of a flower is removed before maturity of the flower, which one of the following would be true?
 A. Pollination would still occur
 B. Fertilization would take place
 C. Ovules would not develop into a seed
 D. Pollen grains would not be produced
29. Study the type of root shown below.

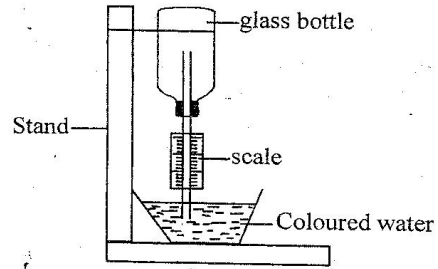


- Which one of the following plants has roots different from the one shown above?
 A. Cabbage B. Oat
 C. Wheat D. Maize
30. The diagram below represents the human breathing system.



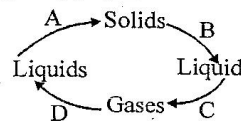
- Which part is useful in the cleaning of air?
 A. M B. R
 C. P D. Q

31. The diagram below shows an instrument used to measure a certain aspect of weather.



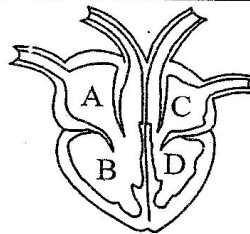
- The instrument does not operate on the fact that;
 A. air occupies space
 B. liquids expand when heated
 C. air expands on heating
 D. air contracts when cooled
32. Which one of the following is the **main** effect of weeds on crops?
 A. They lower crop yields
 B. Some weeds harbour pests and diseases which attack crops
 C. It is expensive to control weeds
 D. Weeds compete with crops for water and mineral salts
33. One early morning, a pupil noticed a bright heavenly body in the east that was **not** twinkling. The heavenly body was most likely to be _____
 A. Saturn B. Uranus
 C. Venus D. Mercury

34. Study the following diagram and use it to answer question



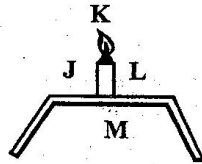
- Which processes represent melting and condensation respectively?
 A. B and D B. A and C
 C. A and D D. B and C

35. The diagram below shows a human heart.



- Which chamber will receive medicine first after an injection?
 A. C B. D C. A D. B

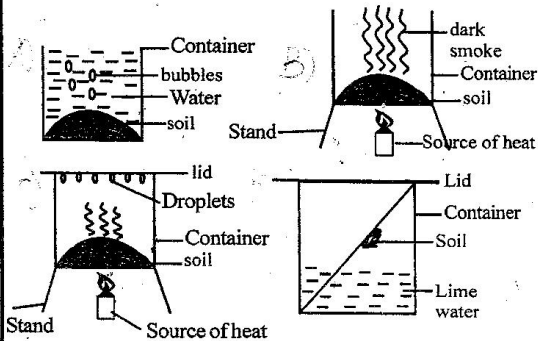
36. Which chemicals are used to kill the external parasites in cattle?
 A. Pesticides B. Acaricides
 C. Herbicides D. Insecticides
37. Jane placed a burning candle on a stand and placed her hands at different positions as shown by letters J, K, L and M below.



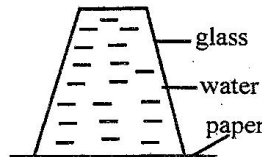
The heat reached the different positions through?

- A. expansion B. conduction
 C. convection D. radiation
38. Leguminous plants are preferred when preparing green manure mainly because they are able to use up _____
 A. Macronutrients in the soil
 B. Micronutrients in the soil
 C. Nitrogen in the air
 D. Carbon dioxide in the air
39. The following are characteristics of an insect pollinated flower except?
 A. They are scented
 B. They produce nectar
 C. They have brightly coloured petals
 D. Their petals are small
40. The following are adaptations for the ileum to perform its functions well. Which one is not correct?
 A. It has a large surface area
 B. It has thick walls
 C. It has thin walls
 D. It is long
41. Sound does not travel through a vacuum because
 A. a vacuum is a bad conductor of heat
 B. vacuum does not vibrate
 C. there is no medium for sound to travel through
 D. a vacuum is an insulator
42. Which one of the following drugs affects the person sitting next to the user if used publicly by the user?
 A. Tobacco B. Beer C. Glue D. Khat
43. Which of the following statement is true about HIV/AIDS?
 A. It is transmitted through sexual contact only
 B. It is not transmitted through shaking hands
 C. It is a disease caused by bacteria
 D. It only attacks a specific age group
44. The type of animal feed made up by compressing cut-up green materials is known as _____
 A. silage B. roughage

- C. concentrate D. fodder
45. Which one of the following diagrams can be used to demonstrate the presence of water in soil?



46. Below are characteristics of a certain form of matter
 (i) takes the shape of the container
 (ii) has a definite volume
 (iii) has a definite mass
 Which one of the following form matter is described above?
 A. Sand B. Cooking oil
 C. Oxygen D. Chair
47. The process of providing the body with food for maintaining good health is known as
 A. body building B. feeding
 C. balanced diet D. nutrition
48. Which of the following is the unit used for measuring force?
 A. Gram B. Newton
 C. Kilogram D. Metre
49. Food in our body is burnt chemically to produce energy. This process is known as _____
 A. egestion B. digestion
 C. combustion D. respiration
50. The set up below was used by std. 7 pupils to investigate a certain property of mater. diagram below best illustrates.



- The pupils concluded that _____
 A. water is less dense than paper
 B. air pressure is exerted upwards
 C. water pressure is exerted upwards
 D. paper is denser than water