

## FORM 3 TERM 3 APRIL 2022 BIOLOGY PAPER 3

1. a) You are provided with substances labeled **M**, **N**, **V**, **U** and **X** and a filter paper. **M** and **N** are food substances, while **V** is Benedict's solution, **U** is 10% Sodium Hydroxide solution and **X** is 1% Copper Sulphate solution. Using the reagents provided, carry out tests determine the food substance(s) in **M** and **N** (10 marks)

Substance	Food Substance Being Tested For	Procedure	Observation	Conclusion
<b>M</b>				
<b>N</b>				

--	--	--	--	--

a).State the functions of the food substances found in both **M** and **N**. (4marks)

.....

.....

.....

.....

.....

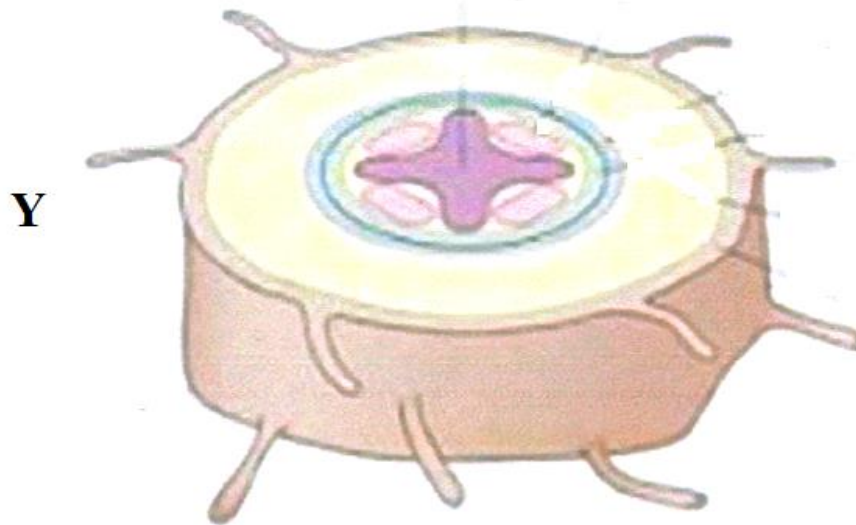
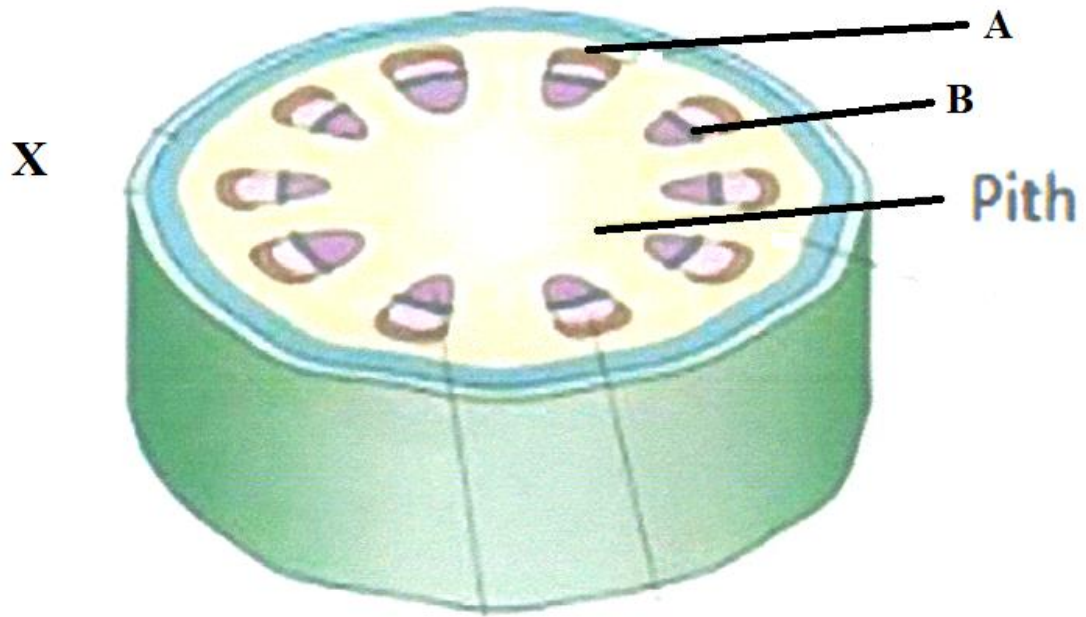
.....

.....

.....

.....

2. Below are sections of a dicotyledonous plant organs labeled **X** and **Y**.



(a) Give **three** observable differences between the sections.

(3 marks)

.....

.....

.....  
.....  
.....

(b) On the diagram, label any **three** parts of section Y. (3 marks)

(c) Identify and state the functions of the parts labeled **A** and **B**. (4 marks)

**A** .....

Function.....

.....  
.....

**B** .....

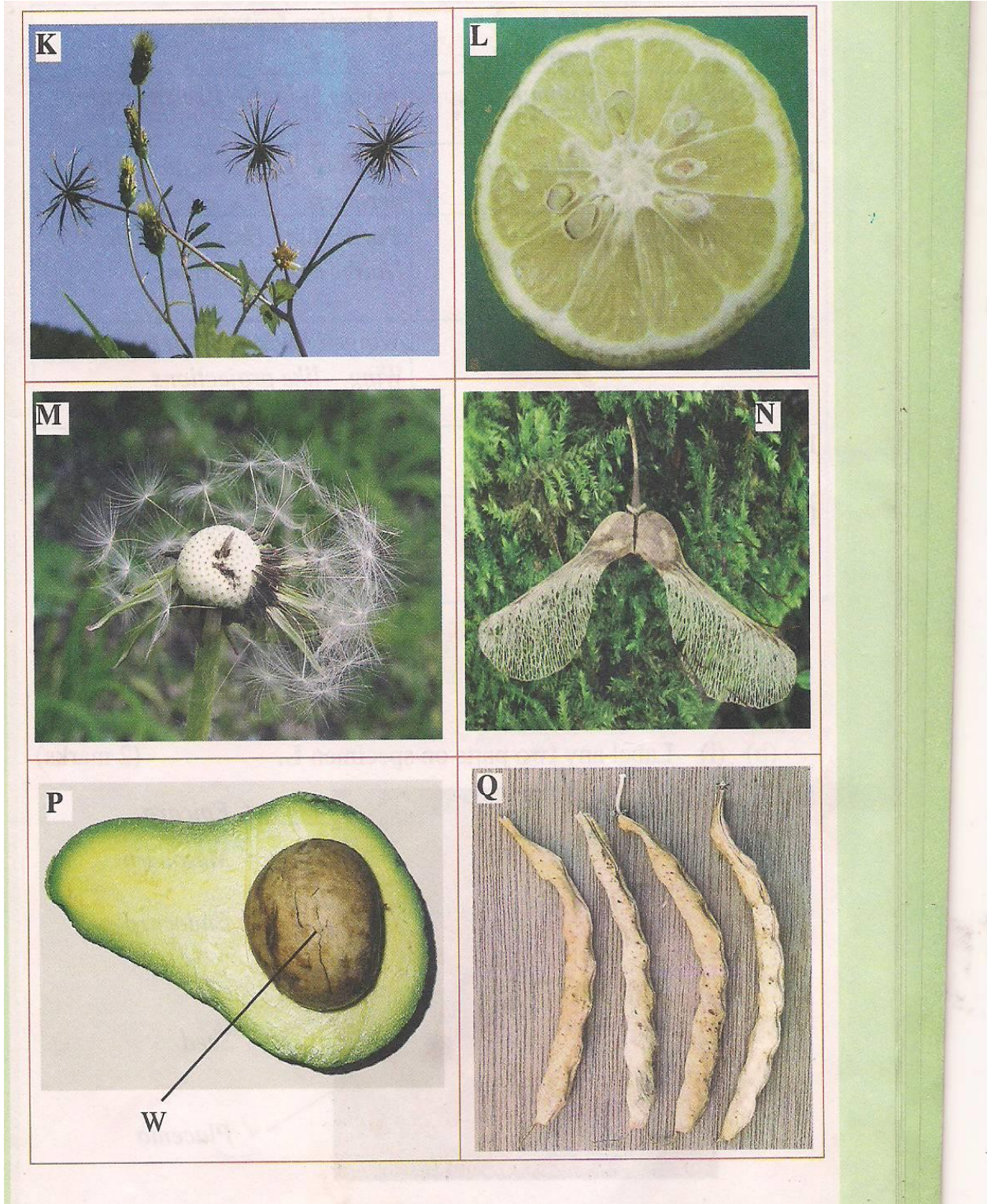
Function.....

.....  
.....

(d) How would section **X** compare with that of a monocotyledonous plant? (3 marks)

.....  
.....  
.....  
.....  
.....  
.....

3. Study the diagrams of fruits below



a) Name the type of fruit shown by P

(1mks)

b) State the type of dispersion used by fruit M, K and N. Give adaptation for each of them (6mks)

c) Draw a well labeled diagram of diagram L (5mks)

d) State the type of placentation shown by diagram Q (1mk)