

**NAME:** .....**CLASS:** .....**ADM. NO. ....**

**AGRICULTURE EXAM**  
**END OF TERM 2 - 2021**  
**FORM TWO**  
**TIME:**

**Answer ALL Questions.**

1. State four systems of farming. (2mks)

2. State two effects of HIV/AIDS on agricultural production. (2mks)

3. List four physical agents of weathering. (2mks)

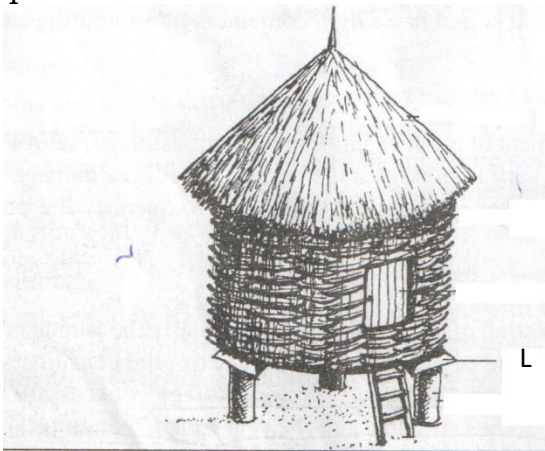
4. List four factors influencing soil formation. (2mks)

5. Name two types of water pumps. (2mks)

6. Mention two tertiary operations carried out during land preparation. (1mk)

7. Outline four characteristics of a fertile soil. (2mks)
8. Give two characteristics of plant used for preparing green manure. (2mks)
9. Differentiate between a root stock and a scion as used in grafting. (2mks)
10. Name two forms in which nitrogen is absorbed by plants. (2mks)
11. State two deficiency symptoms of Nitrogen. (2mks)
12. List four examples of phosphatic fertilizers. (2mks)
13. A farmer was asked to apply fertilizers as follow: 200 kg/ha of DSP (40%  $P_2O_5$ ), 150kg/ha of sulphate of ammonia 20% Nitrogen and 150kg/ha of Muriate of Potash 60%  $K_2O$ )
- a) How much  $P_2O_5$  did the farmer apply per ha. (2mks)
- b) How much  $K_2O$  did the farmer apply per ha. (2mks)

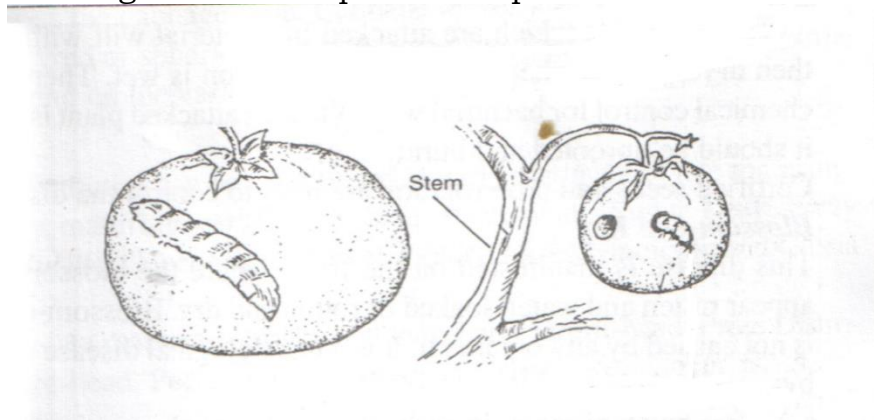
- c) How much nitrogen did the farmer apply per/ha. (2mks)
14. State two methods of pH testing. (2mks)
15. Outline four disadvantages of mulching in crop production. (2mks)
16. List 3 factors that determine the time of harvesting farm produce. (3mks)
17. State four post harvesting practices. (2mks)
18. The diagram below shows a type of storage facility. Use it to answer question that follow.



- a) Name the structure. (1mk)
- b) Name part L and state its function. (2mks)
- c) Name the roofing material the structure is made of: (1mk)
- d) List three limitations of the above structure. (3mks)
- e) Give two preparations that the farmer should make on the above structure before the crop produce is brought in. (2mks)

19. Give four categories of vegetables. (2mks)

20. The diagram below represents a pest that attacks tomatoes.



- i) Identify the pest. (1mk)
- ii) State two control measures of the above pest. (2mks)

21. (a) Differentiate between health and disease as used in livestock health. (2mks)
- (b) State four factors that predispose livestock to diseases. (4mks)
- (c) Outline 3 routine management practices of disease control. (3mks)
- (d) State three activities in livestock health that necessitate handling of animals. (3mks)
22. (a) List two harmful effects of tsetsefly infestation to livestock. (2mks)
- (b) Name:
- i) Intermediate host for tapeworm. (1mk)
- ii) Intermediate host for liverfluke. (1mk)
- (c) Give two examples of one host tick. (2mks)