

**NAME:** .....**ADM. NO:** .....**CLASS:**...

**END YEAR EXAM – 2019**  
**AGRICULTURE PAPER 2 FORM 3**

**INSTRUCTIONS:**

**Answer ALL Questions in section A, B and any TWO Questions in section C.**

**SECTION A: (30 MARKS)**

1. List two biotic factors that affect livestock production in Kenya. (1mk)
  
2. Outline four reasons that enable camels to live in arid areas. (2mks)
  
3. State four reasons for dehorning in livestock. (2mks)
  
4. State four advantages of using a spray race over a plunge dip. (2mks)
  
5. State four reasons for seasoning timber. (2mks)
  
6. State two types of bees. (2mks)
  
7. State four reasons for swarming of bees. (2mks)
  
8. Define the term caponization as used in livestock production. (1mk)

9. Outline four uses of water in animals on the farm. (2mks)
10. Differentiate between steaming up and creep feeding. (2mks)
11. State four routes through which pathogens enter the body of an animal. (2mks)
12. Differentiate between carrying capacity and overstocking. (2mks)
13. State four advantages of Zero grazing unit in livestock production. (2mks)
14. Name the equipment used alongside each of the following: (2mks)
- i) Trocar –
  - ii) Bull ring –
  - iii) Elastrator –
  - iv) Syringe –
15. State four reasons that show that a sow is about to farrow. (2mks)
16. State two major systems of breeding in livestock production. (2mks)

**SECTION B: (20 MARKS)**

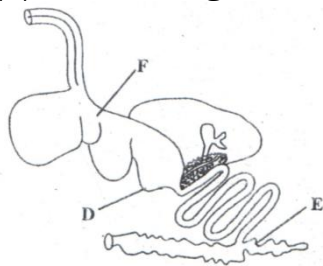
**Answer ALL questions in this section.**

17. Mr. Gatimu asked his daughter to mix feeds for his cows. Mr. Gatimu's daughter decided to use feedstuffs to get 15% DCP. The contents were as shown below
- Fish meal 50% DCP.

- Cereal meal mixture 12% DCP

(a) How much of the two feedstuffs will Mr. Gatimu's daughter mix to get a 90kg bag? (4mks)

(b) The diagram below illustrates a type of a digestive system.



i) Name parts marked D and E (2mks)

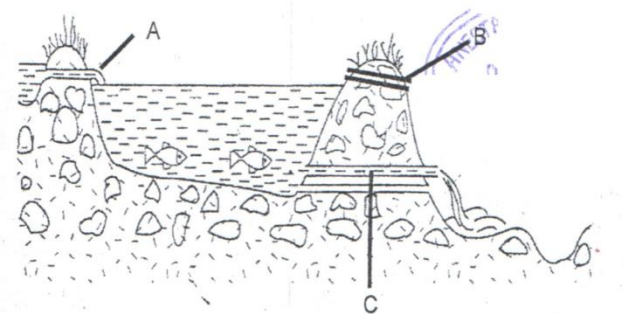
D.....

E.....

ii) State two functions of part F. (2mks)

(2mks)

18. The diagram below shows a cross-section through a fish pond. Study it and answer questions that follow.



a) Name parts A, B and C. (1 ½ mks)

(1 ½ mks)

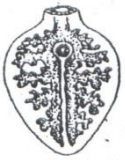
b) What is the function of part labeled B. (½ mk)

(½ mk)

c) State four factors that should be considered when siting a fish pond. (2mks)

19. State four categories in which diseases in livestock are classified. (2mks)

20. Below is an illustration of a livestock parasite. Study it and answer questions that follow.



i) Name the parasite( ½ mk)

ii) State three symptoms that may be observed in an animal that has been attacked by the above parasite. (1 ½ mks)

iii) State the intermediate host of the parasite. ( ½ mk)

iv) Give two control measures of the above parasite. (2mks)

21. State two methods of extracting honey from combs. (2mks)

### **SECTION C: (40 MARKS)**

**Answer any TWO questions from this section.**

22. (a) Describe five factors to consider when selecting a breeding stock. (10mks)

(b) Describe five control measures of diseases in livestock and give an example of a disease controlled by the measure. (10mks)

23. Discuss mastitis disease under the following:-

a) Causal organism. (1mk)

b) Symptoms. (5mks)

c) Causes. (4mks)

d) Control measures. (5mks)

e) State five reasons for keeping livestock healthy. (5mks)

24. (a) Explain five reasons why fences are important to a farmer. (10mks)

(b) Explain five modern technology methods that have helped to improve the quality of livestock products in Kenya. (10mks)