

**AGRICULTURE PAPER 2**  
**FORM 4**

NAME .....

ADM .....

CLASS .....

1. State four mechanical methods of controlling ticks. (4mks)
  
  
  
  
  
  
  
  
  
  
2. Give two examples of feed addicted in cattle. (1mk)
  
  
  
  
  
  
  
  
  
  
3. Name the mineral deficiently that causes each of the following condition in livestock.  
Grass stagger (Tetany) (1/2mk)  
  
Milk fever/parturient paresis (1/2mk)
  
  
  
  
  
  
  
  
  
  
4. Name two hormones produced in a lactating cow. (2mks)
  
  
  
  
  
  
  
  
  
  
5. What is referred to as a ‘ Notifiable disease’ (1mk)  
  
  
  
  
  
  
  
  
  
- b) Name four examples of notifiable diseases in livestock. (2mks)
  
  
  
  
  
  
  
  
  
  
- 6. Outline three pre-disposing factors of footrot disease in sheep.(1 ½ mks)
  
  
  
  
  
  
  
  
  
  
- 7. List any four metal work tools and equipment used in the farm. (2mks)

8. Outline four qualities of eggs for incubation. (2mks)
9. State four prophylactic measures used by a farmer to control livestock diseases. (2mks)
10. Give three methods of feeding colostrums to newly born calves. (1 ½ mks)
11. A) Define the term “zoonote disease.” (1mk)
- b) Give two examples of zoonote diseases. (1mk)
12. List three advantages of hedges. (1 ½ mks)
13. Why is it necessary to provide grit to birds? (1mk)
14. State four good qualities of honey. (2mks)

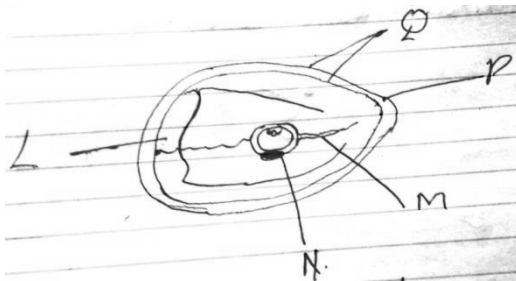
15. State two causes of soft shell in eggs. (1mk)

16. Name three methods of livestock selection. (1 ½ mks)

17. Name a tool used for tightening barbed wires during fencing. (1mk)

**SECTION B. (Answer all the questions.)**

18. Study the diagram of an egg below and answer the question that follow.



i) Name the parts labeled N,Q and P. (1 ½ mks)

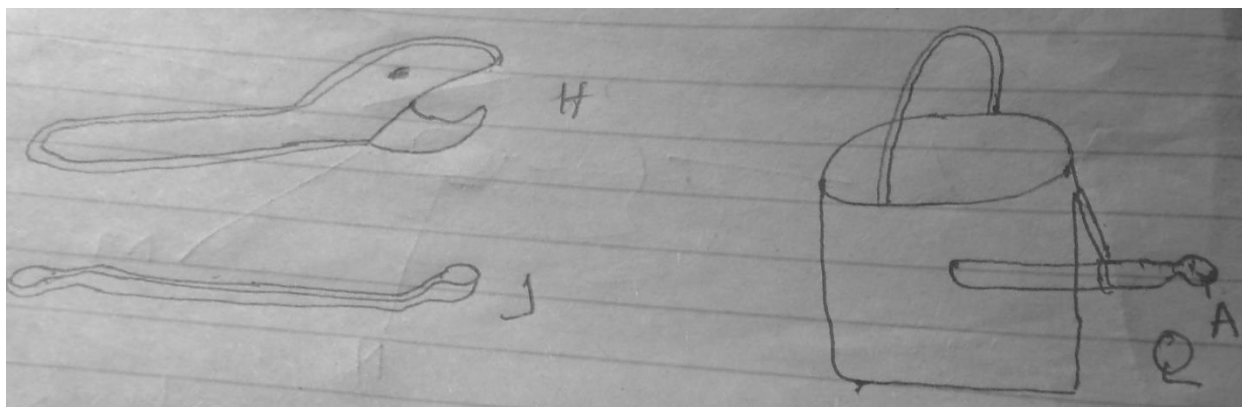
N  
Q  
P

ii) State the function of the parts labeled M and L. (1 ½mks)

iii) Why should the egg be turned during incubation. (1mk)

19. State four reasons of treating timber. (4mks)

20. Below are the diagrams of workshop tools H, J and Q. Study them and answer the question that follow.



i) Identify each tool. (1 ½ mks)

H

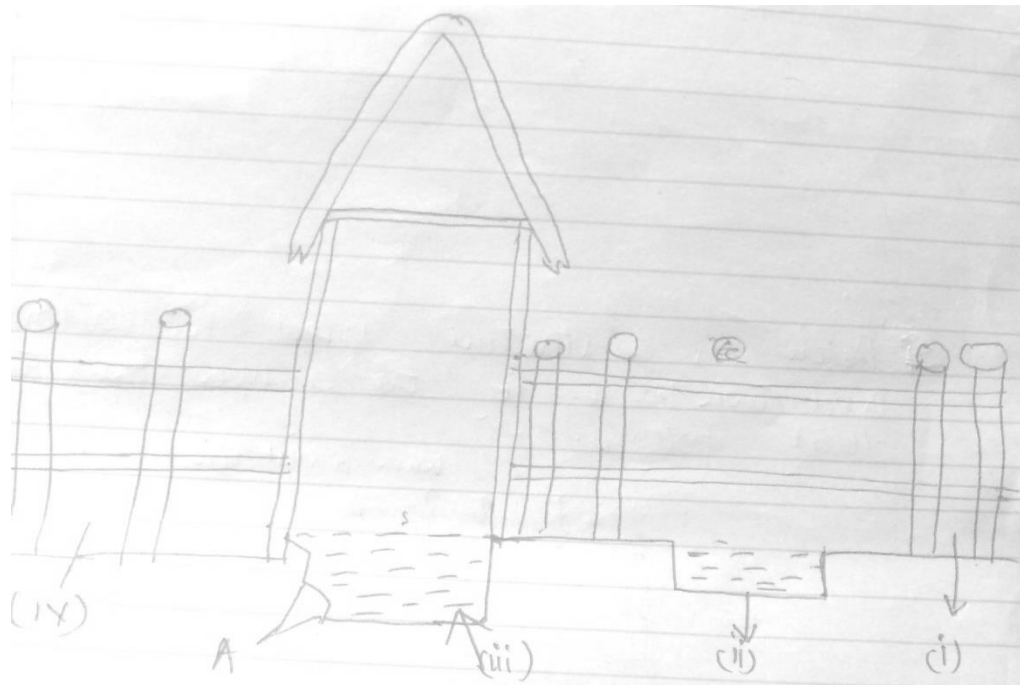
J

Q

ii) What functional advantages does H have over J. (1mk)

iii) Why is the part labeled H an important component of watering can. (1mk)

21. Below is a diagram of a certain farm structure. Use it to answer the questions that follow.



a. Name the parts labelled.

i.

ii.

iii.

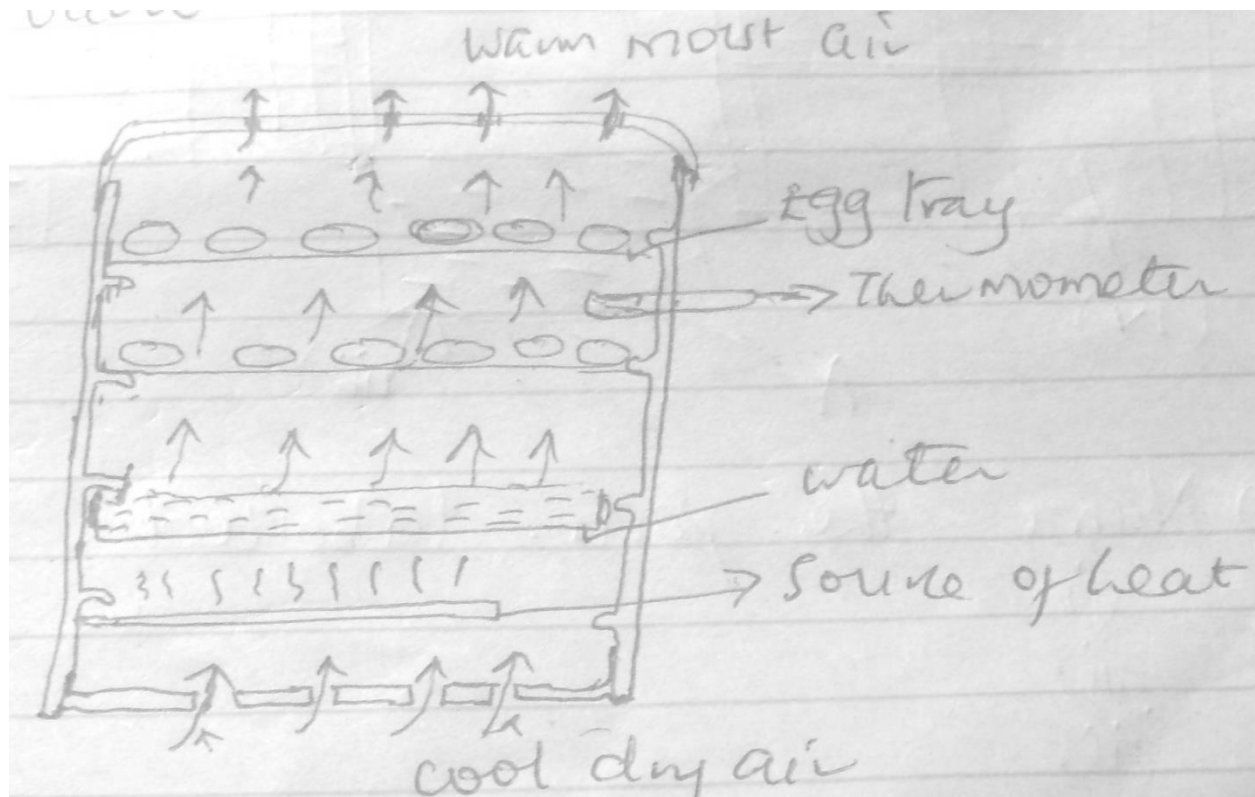
iv.

b. Identify the part labeled A. (1/2 mk)

c. Give the function of the part labeled A. (1/2 mk)

d. State two maintenance practice carried out in part (ii) above. (2mks)

22. Below is a structure used in poultry production. Use it to answer the questions that follow.



- a. Identify the structure. (1mk)
- b. State the main function of the structure. (1mk)
- c. Give the function of the following in the structure.  
Water (1/2 mk)

Thermometer (1 /2 mk)

### **SECTION C**

**Answer any two questions in this section.**

23. A) Outline the use of fence in the farm. (10mks)

b) Discuss the tractor transmission system. (10mks)

24. A) Discuss foot and mouth disease under the following sub-headings.

Animal affected. (2mks)

Methods of transmission. (2mks)

Symptoms of attack. (4mks)

Control measures. (2mks)

b. Outline general control measures of livestock parasites. (10mks)



25. Outline the various methods of maintaining farm tools and equipment. (8mks)

b. Describe artificial rearing of layer chicks from day one to end of brooding. (12mks)

