

## SECTION A

1. Name a tool recommended for the following practices on the farm.
  - a. Smoothing a very rough surface of flat wood(1/2mk)
  
  
  
  
  
  
  
  
  
  
  - b. Making threads on metallic pipes.(1/2mk)
  
  
  
  
  
  
  
  
  
  
  - c. Breaking stones during construction and ballast in masonry work.(1/2mk)
  
  
  
  
  
  
  
  
  
  
  - d. Cutting wood along the grains(1/2mk)
  
2. Give four signs that show a rabbit doe is about to give birth.(2mks)
  
  
  
  
  
  
  
  
  
  
3. Give four reasons for steaming up a dairy cow.(2mks)
  
  
  
  
  
  
  
  
  
  
4. State four reasons for castrating male calves(2mks)

5. Outline two disadvantages of using embryo transplant.(1mk)

6. a.State four reasons for dehorning /disbudding livestock.(2mks)

b.State two chemical methods of disbudding livestock.(1mk)

7. Give three types of feed additives given to livestock.(1 1/2mk)

8. State two features in a gizzard that enable it to carry out its functions (1mk)

9. State four economic importance of internal parasites in livestock (2mks)

10. State four problems that may necessitate a farmer calling a qualified stockman during calving down of a cow.(2mks)

11. a. What is Zoonotic disease?(1mk)

b. What do you understand by the term quarantines in livestock production.(1mk)

12. Study the table below and fill in the missing words(4mks)

Desorption	Cattle	Pigs	Poultry
Young form birth/hatching to weaning	a)	b)	Chick
Young female before first parturition	c)	Gill	d)
Mature for breeding	Bull	e)	f)
Mature after first parturition	g)	h)	hen

13. State the gestation of the following animals

- i. Pigs
- ii. Cattle
- iii. Rabbits

14. State the difference between a vector and an intermediate host.(2mks)

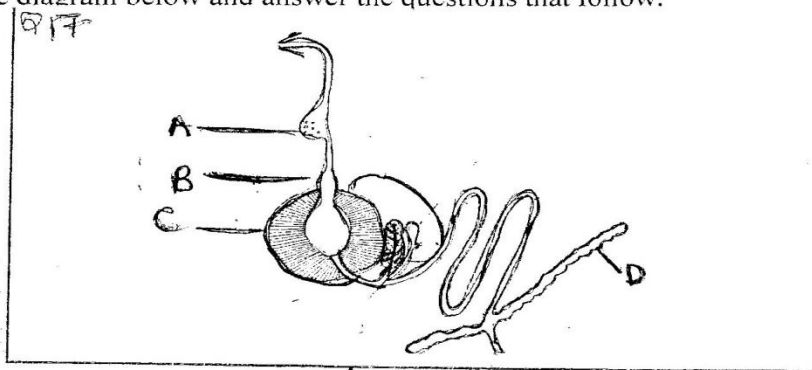
15. State four functions of carbohydrates in animals body.(1mk)

**SECTION B(20MKS)**

16. a.Using Pearson's square method compute a 400kg ration with 20% DCP from wheat containing 15% DCP and cotton seed cake containing 60% DCP.Clearly show your working

b.Apart form the method above, state one other method farmer can use to complete a livestock ration.(1mk)

17. Study the diagram below and answer the questions that follow.



a. i) Identify the above digestive system.

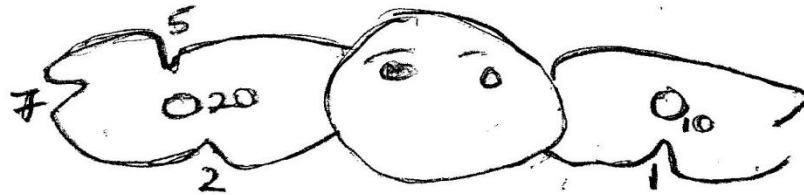
ii) Name the parts labeled A, B and C. (3mks)

iii) State one function of the part labeled D mentioned in (ii) above. (2mks)

iv) What makes the part labeled C be more effective in its functions. (2mks)

18. a. Below is diagram method of identifying livestock.

Q 18

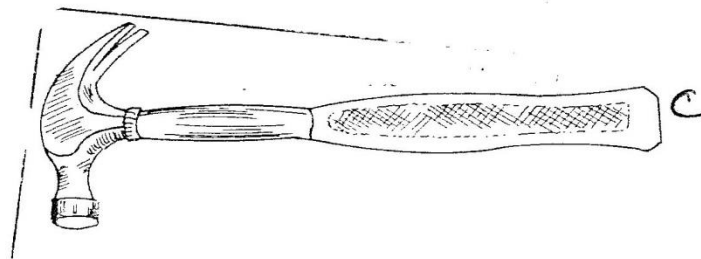
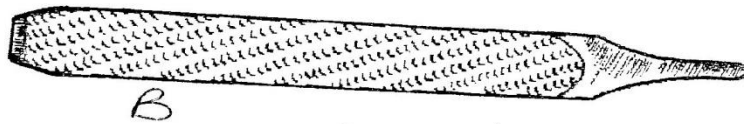
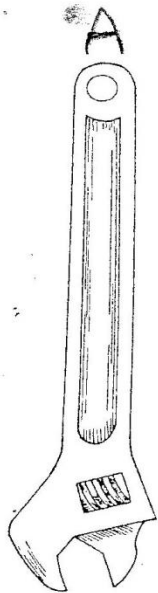


i) Name the type of identification method used above. (1mk)

ii) Name the identification number on the diagram shown above. (1mk)

iii) Using the above system, draw a diagram representing livestock number. (1mk)

19. State 1 use of each of the following farm tools and equipment. (4mks)



A

B

C

D

**SECTION C(40MKS)**

**Answer any TWO questions in this section.**

20. With aid of a fully labeled diagram, describe the processing formation in hen.(20mks)

21. a) Describe the life cycle of a two-host ticks(7mks)

b) Explain the measure used to control external parasites in livestock.(8mks)

c) State five factors that affect digestibility in livestock nutrition.(5mks)

22. a. Describe twelve measures of controlling livestock diseases(12mks)

b. Outline eight diseases predisposing factors in livestock production.(8mks)