

# FORM FOUR CLUSTER KCSE MODEL5

## AGRICULTURE PAPER 2 QUESTIONS

### SECTION A (30 Marks)

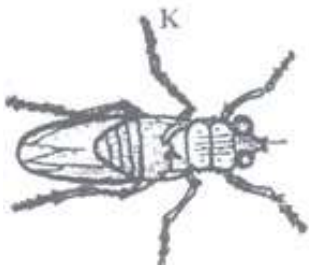
1. State two reasons why calves should be housed in individual pens.  
.....  
.....
2. Give four conditions that reduce the quality of eggs for incubation.  
.....  
.....
3. List four disadvantages of natural mating.  
.....  
.....
4. State four causes of infertility in dairy cattle.  
.....  
.....
5. State four desirable features of materials required for construction of a pigsty.  
.....  
.....  
.....
6. List four tools used when constructing a wooden fence.  
.....  
.....  
.....
7. State three desirable characteristics to be considered when selecting a heifer for milk production.  
.....  
.....
8. Give four signs which indicate that a sow is about to farrow.  
.....  
.....
9. Give two reasons for treating timber for fencing.  
.....  
.....
10. Give four advantages of deep litter system of keeping poultry.  
.....  
.....
11. State four factors which determine the amount of feed an animal can consume.  
.....  
.....  
.....
12. State two characteristics of goats that make them adaptable to arid areas of Kenya  
.....  
.....

- .....
13. Give three reasons why Jersey breed is better suited for marginal areas than Fresian breed.  
.....  
.....
14. Differentiate between mothering ability and prolificacy in livestock breeding.  
.....

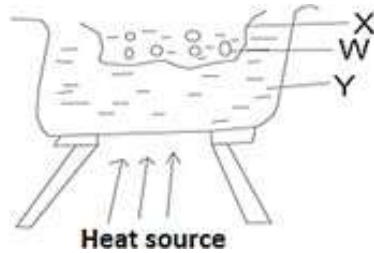
- .....
15. Give two maintenance practices required on a rip saw.
- .....
- .....
16. State two functions of ventilation in animal houses.
- .....
- .....
17. Define the term caponization as used in livestock management.
- .....
- .....
18. Outline three reasons why farm structures should be maintained.
- .....
- .....
19. Name four breeds of goats kept for milk production.
- .....
- .....

**SECTION B (20 Marks)**

20. The diagram below illustrates parasites which transmit diseases in livestock. Study them carefully and answer the questions below.



- a) Identify the specimen K and L.
- K..... (1/2 mark)
- L..... (1/2 mark)
- b) In each case name one disease transmitted by the parasite K and L in cattle.
- K..... ((1/2 mark)
- L..... (1/2 mark)
- c) Name the causative organism of the disease transmitted by K. (1/2 mark)
22. Below is an illustration of a method of extracting honey from combs. Study the diagram and answer the questions that follow.



- a) Identify the above method of extracting honey. (½ mark)  
.....
- b) Give a reason why container X should not be heated directly. (1 mark)  
.....
- c) Name the parts labelled X ..... (½ mark)  
W ..... (½ mark)  
Y ..... (½ mark)
- d) Besides the above method, state one other method of extracting honey. (½ mark)  
.....

**SECTION C (40 Marks)**

- 23. a) Discuss the uses of various farm hand tools in the construction of a cattle dip. (8 marks)
- b) Briefly explain five functions of water in the body of an animal. (5 marks)
- c) Describe seven factors that are considered during the selection of a breeding stock. (7 marks)
- 24. a) Explain the predisposing factors of mastitis disease in cattle. (10 marks)
- b) Outline the methods used to control internal parasites in livestock. (7 marks)
- c) State three ways by which a farmer can identify an animal suffering from worm infestation. (3 marks)
- 25. a) Discuss the management of layers from one day old to the start of laying in a deep litter system. (14 marks)
- b) Explain the structural requirements of a rabbit hutch. (6 marks)  
.....  
.....  
.....  
.....