

FORMFOURCLUSTER KCSE MODEL 4
AGRICULRUTE PAPER 2 QUESTIONS

SECTION A (30 Marks)

1. (a) Name the beef cattle breed with the following features.

- Deep red body with the face and leg parts always white.

- Rectangular in shape with deep and thick flesh. Breed.....(1 mark)

(b) A part from the breed above, name any other TWO beef cattle breed. (1mark)

2. State THREE reasons why embryo transfer should be encouraged in livestock breeding.

.....
.....
.....

3. (a) State THREE reasons why hoof trimming as a livestock practice is important. (1½marks)

.....
.....
.....

(b)Distinguish between branding and tattooing as methods of identification. (1mark)

.....
.....

4. State the functional difference between: (a) Marking gauge and mortise gauge. (1mark)

.....
.....

(b) Milk churn and milking pail. (1mark)

.....
.....

(c) Garden trowel and masonry trowel. (1mark)

.....
.....

5. State THREE advantages of biogas as a source of power.

.....
.....

6. (a) Explain the factors that would influence the power output of drought animals such as oxen.

(10marks)

(b) Explain the qualities of a good breeding stock. (10marks)

.....
.....
.....
.....
.....
.....

7. (a) Give FOUR reasons why minerals should be included in the livestock diet. (1½mark)

.....
.....
.....

8. Give FOUR general methods of controlling livestock parasites.

.....
.....
.....

9. Give FOUR general methods of controlling livestock parasites.

.....
.....
.....

Distinguish between contagious and infectious disease.

.....
.....

10. Give FOUR examples of protozoan disease

.....
.....

11. Name THREE livestock diseases predisposed by sex.

.....
.....

12. Name THREE livestock diseases predisposed by sex.

.....
.....

State FOUR reasons for culling cattle on the farm.

.....
.....
.....

13. Name TWO pairs of livestock tools that MUST always be used together.

.....

.....
14. State FOUR characteristics of eggs that can lead to poor hatchability.

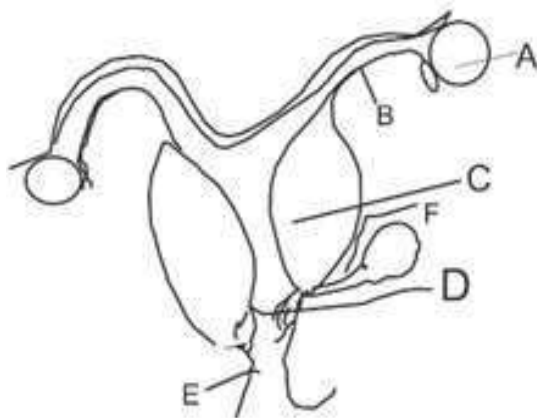
.....
.....

15. State TWO camel features that adapts it to survive in arid areas.

.....
.....

SECTION B (20 Marks)

16. (a) (1mark)



(b) State the parts labelled A –F (6 marks)

A. B.....

C..... D.....

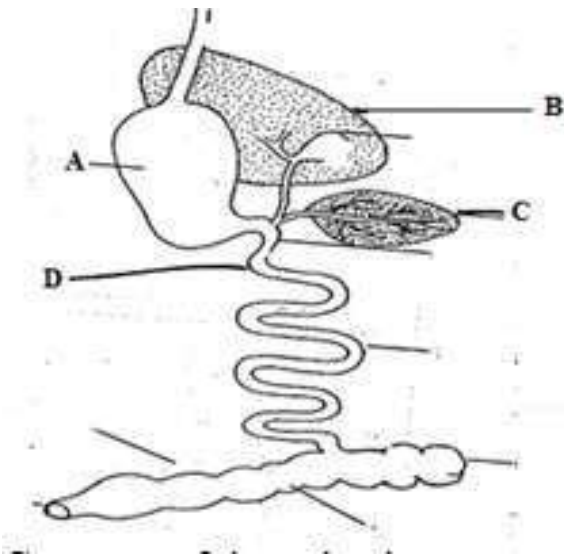
E..... F.....

(c) State the functions of the part labelled A. (1mark)

.....
.....
.....

17. Study the illustration below and answer the questions that follow:

(a) State the category of the animal whose digestive system is illustrated below



Category of the animal. (1mark)

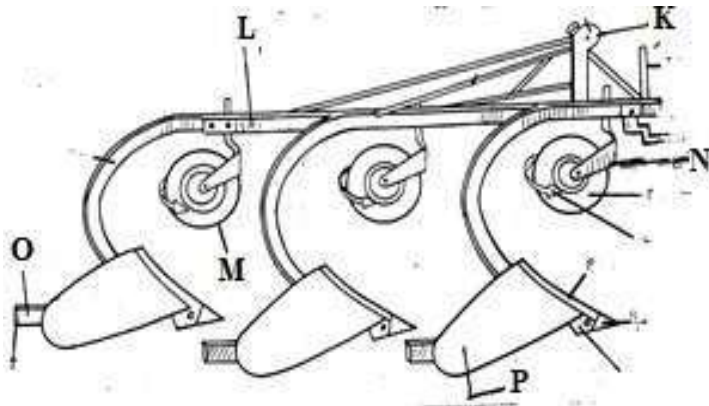
.....

(b) Name the parts labeled A-D (4marks)

A.....B.....

C.....D.....

18. study the illustration below and answer the question that follow:



(a) Identify the parts labelled K-P (6marks)

K L.....

M..... N.....

O..... P.....

(b) State the function of the part labelled P. (1mark)

.....
.....

SECTION C (40 Marks)

19. (a) Explain the importance of keeping livestock in Kenya. (10marks)

(b) Explain the measures you carry out to control mastitis in a herd of cattle. (10marks)

20. (a) Describe the procedure followed in extracting honey from the honey combs using heat method.

(6marks)

(b) Describe the management activities carried out in a fish pond. (10marks)

(c) Outline FOUR ways in which tractor power can be made available for use on the farm. (4marks)

21. (a) Explain the factors that would influence the power output of drought animals such as oxen.

(10marks)

(b) Explain the qualities of a good breeding stock. (10marks)

.....
.....
.....
.....