

FORM FOUR CLUSTER KCSE MODEL 3
AGRICULTURE PAPER 2 QUESTIONS

SECTION A (30 Marks)

Answer ALL the questions in this section in the spaces provided

1. List four livestock species kept by farmers. (2marks)

.....
.....
.....
.....
.....

2. Give four characteristics of an effective acaricide. (2marks)

.....
.....
.....
.....
.....

3. Give any four categories of farm tools and equipment. (2marks)

.....
.....
.....
.....
.....

4. Name four substances resulting from digestion and microbial activities in the rumen. (2marks)

.....
.....
.....
.....
.....

5. State two precautionary measures to take during handling of vaccines before use. (2marks)

.....
.....

6. Give four signs of heat on sows. (2marks)

.....
.....
.....

.....
.....
7. Give two reasons why Jersey breed is more suited to marginal areas than Fresian breed. (1mark) ...

.....
.....
8. Which two factors influence the quality of honey? (1mark)

.....
.....
9. List four routine management practices carried out on cattle in a crush. (2marks)

.....
10. . Lists two tools used in docking. (1mark)

.....
.....
11. Give four materials collected by bees. (2marks)

.....
.....
12. State four advantages of using concrete in constructing farm structures. (2marks)

.....
13. . List four characteristics of eggs fit for incubation. (2marks)

.....
14. . Which are the two calf weaning programmes. (1mark)

.....
.....

.....
15. Which four factors affect milk composition?

.....
.....
.....
.....

.....
16. State four factors that influence the choice of rearing system to poultry farmer. (2marks)

.....
.....
.....
.....

.....
17. Give two sources of chicks for poultry farmers in Kenya. (1mark)

.....
.....
.....

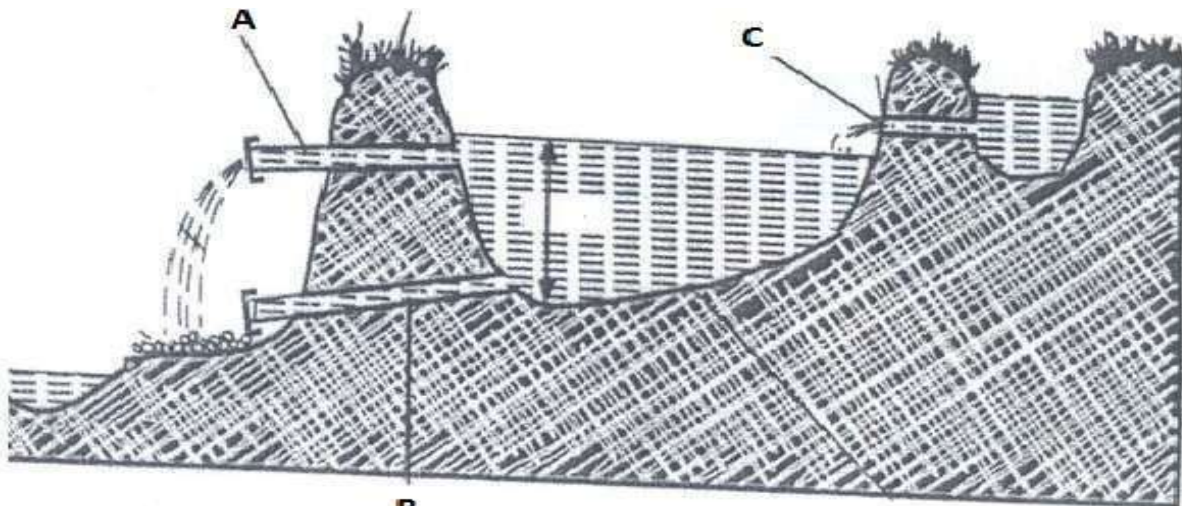
18. State two conditions which may result from persistent use of wood fuel as a source of power in rural homes. (1mark)

.....
.....

.....
SECTION B (20 Marks)

Answer ALL questions in this section in the spaces provided.

19. Carefully study the following illustration of a fish pond then answer the questions that follow.



(a) Name the parts labeled. (1½marks) **B**

A.

.....
.....

B.

.....
.....

C.

.....
.....

(b) Give one reason for planting grass on the walls of the pond. (1mark)

.....
.....
.....

(c) State three maintenance practices carried on the fish pond. (1½marks)

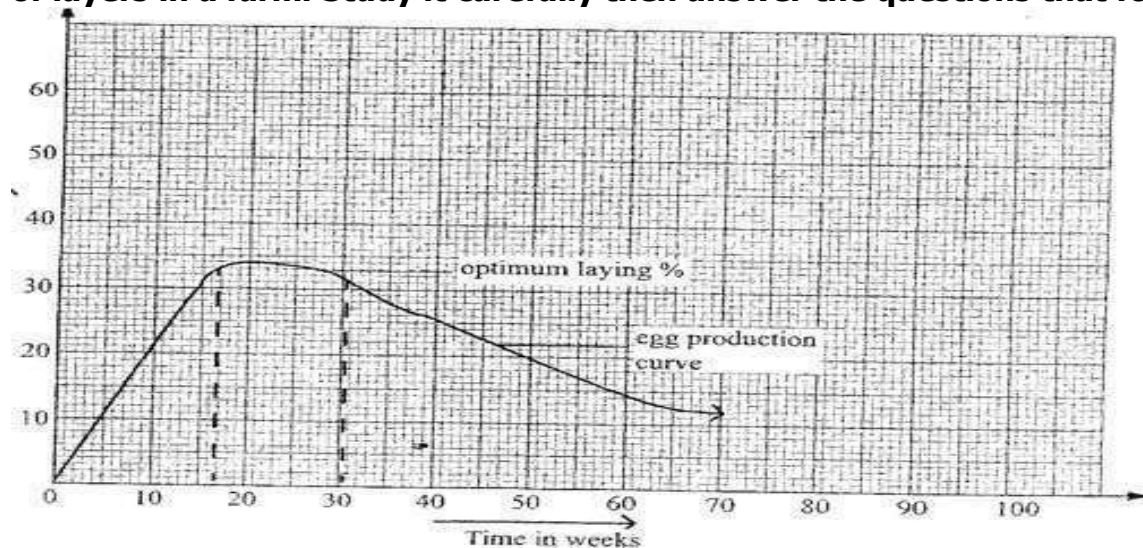
.....
.....
.....
.....

20.

(d) Give two major reasons for the variation in the depth of the pond floor. (1mark)

.....
.....
.....

Below is graphical representation of laying percentage curve of a given flock of layers in a farm. Study it carefully then answer the questions that follow.



(a) Why is the laying percentage curve assuming that shape? (½mark)

.....
.....
.....

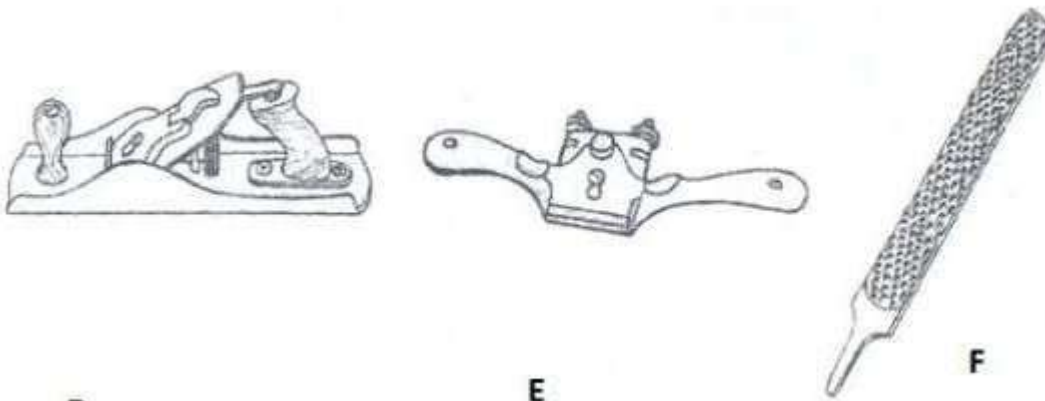
(b) Give any two reasons leading to interruption of the laying percentage as shown above.(1mark)

.....
.....
.....

(c) Given that poultry farmer keeps 80 layers and the birds lay a daily average of 65 eggs.

(i) Calculate the laying percentage of this flock. (2½marks)

18. Study the following illustration of tools carefully then answer the questions that follow.



(a) Identify the tools labeled D, E and F. (1½marks)

D.....
E.....
F.....

(b) Give one situation in which only tool F can be used. (½mark)

.....
.....
.....

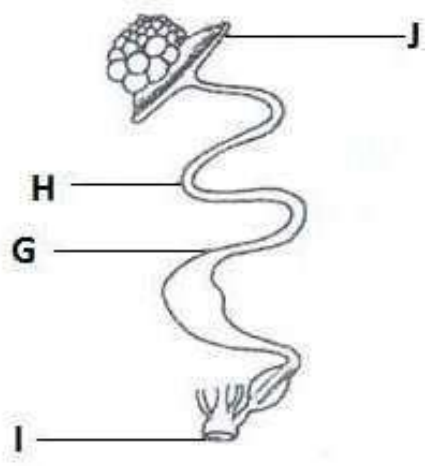
(c) Give one use of tools D, E and F. (1½marks)

D.....
.....
E.....
.....
F.....
.....

(d) Give one maintenance practice carried out each of the tools. (1½marks)

D.....
.....
E.....
.....
F.....
.....

19. Carefully study the illustration of the reproductive system of a hen below the answer the question that follow.



(a) (i) Name the parts labelled G, H, I and J. (2marks)

G.....

.....

H.....

I.....

J.....

(ii) In which part does the egg stay longest during the formation process? (½mark)

.....

(b) Where does each of the following activities occur before the egg is laid? (1½marks) (i)

Fertilization.....

(ii) Shell and pigment deposition.....

(iii) Addition of water, mineral salts and vitamins.....

(c) How many ova can be released by the ovary before a layer is disposed of? (1mark)

.....

SECTION C (40 Marks)

Answer any TWO questions from this section in the spaces provided after question 25

23.. (a) Describe artificial rearing of chicks from day old to end of brooding period. (10marks)

(b) Outline advantages of live fences in the farm. (5marks)

(c) Explain why embryo transplant is gaining popularity in livestock improvement in Kenya. (5marks)

24.. (a) Describe milk fever under the following sub-headings:

(i)Animal species attacked. (2marks)

(ii) Symptoms of attack. (2marks)

(iii) Control and treatment. (4marks)

(b) Describe any four daily maintenance practices on a tractor before releasing it for work in the farm. (8marks)

(c) Outline factors that would force the farmer to use hand tools for cultivation instead of tractor –drawn implements. (4marks)

25.. (a)Outline harmful effects of parasites. (5marks).

(b) Describe the procedure used in clean milk production. (8marks)

(c) Describe maintenance practices to be carried out in a deep litter house. (7marks)

.....
.....
.....
.....
.....
.....
.....
.....
.....
.....
.....