

# KENYA HIGH EXAMINTIONS 2021

*Kenya Certificate of Secondary Education*  
**AGRICULTURE PAPER 2 (THEORY)**

**SECTION A (30 MARKS)**

**Answer ALL questions in this section.**

1. State four problems associated with nomadic pastoralism method of farming. **(2 marks)**

.....  
.....

2. State one use of the following tools in the farm. **(2 marks)**

a) Spoke shave

.....

b) Pipe wrench

.....

c) Stock and die

.....

d) Wire strainer

.....

3. Name one exotic dairy cattle breed in Kenya which produces milk with:

a) Highest butter fat content. **(1 mark)**

.....

b) Lowest butter fat content. **(1 mark)**

.....

4. Name two dual purpose breeds of dairy cattle reared in Kenya. **(1 mark)**

.....

.....

5. Name two sources of energy concentrates. **(1 mark)**

.....

.....

6. Using Pearson's square method, compute a 100kg ration with 20% DCP from sunflower seed cake which contains 10% DCP and simsim seed containing 60% DCP. **(4 marks)**

7. Name three livestock diseases transmitted by ectoparasites. **(1½marks)**  
.....  
.....  
.....
8. Name an intermediate host for the following internal parasites. **(2 marks)**  
a) Tapeworms  
.....  
b) Liver flukes  
.....
9. Give any two reasons for docking in sheep rearing. **(1 mark)**  
.....  
.....
10. State two functions of the queen in a beehive. **(1 mark)**  
.....  
.....
11. State three maintenance practices carried out on a piggery unit. **(1½ marks)**  
.....  
.....  
.....
12. State four disadvantages of an electrical fence. **(2 marks)**  
.....  
.....  
.....  
.....
13. State four advantages of using a spray race for controlling parasites. **(2 marks)**  
.....  
.....  
.....  
.....

14. Give four disadvantages of artificial insemination in livestock production.

(2 marks)

.....  
 .....  
 .....  
 .....

15. Give any four structural requirements that a calf pen should possess.

(2 marks)

.....  
 .....  
 .....  
 .....

16. List two signs of infertility in cows.

(1 mark)

.....  
 .....

17. Give two methods of introducing vaccines to livestock.

(2 marks)

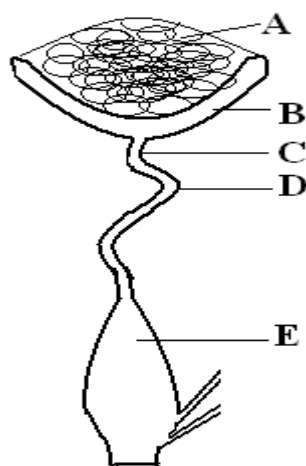
.....  
 .....

**SECTION B (20 marks)**

**Answer ALL questions in this section.**

18. Study the diagram

below and answer the questions that follow.



(i) Name the parts labelled A, B, C, D and E in the diagram.

(2½ marks)

A.....

- B.....
- C.....
- D.....
- E.....

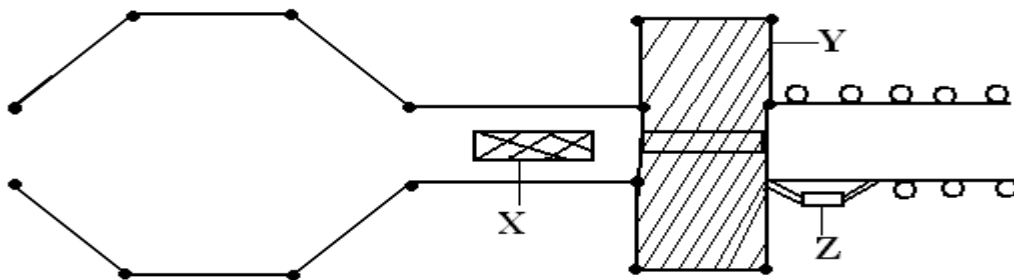
**(ii) State the function of each part. (2½ marks)**

- A.....
- .....
- B.....
- .....
- C.....
- .....
- D.....
- .....
- E.....
- .....

**19. Give two reasons why a jersey breed cattle is adapted to arid and semi arid areas. (2marks)**

- .....
- .....

**20. The diagram below represents an aerial view of a farm structure. Study it carefully and answer the questions that follow.**



**a) Identify the structure. (1 mark)**

- .....

**b) Name the parts labeled X, Y and Z. (3 marks)**

- X.....
- Y.....
- Z.....

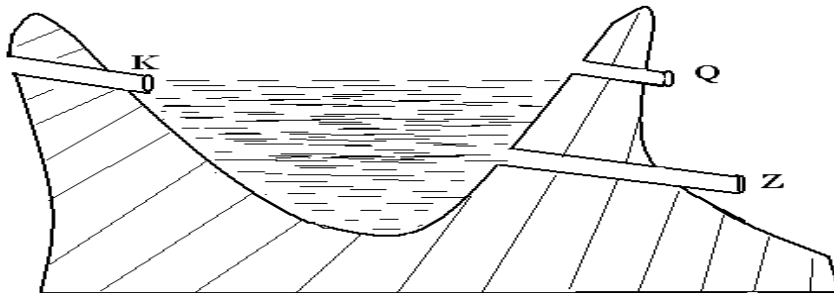
**c) List two roles of the part labeled Y. (2 marks)**

21. Give two reasons for carrying out hoof trimming.

(1 mark)

22. The

illustration below is a farm structure.



a) Identify the structure.

(1 mark)

b) Name the parts labeled K, Q and Z.

(3 marks)

- K.....
- Q.....
- Z.....

c) Give four maintenance practices carried out on the above structure.

(2 marks)

**SECTION C (40 MARKS)**

**Answer ANY TWO questions in this section**

23. a) Give five functions of vitamins in livestock production.

(5 marks)

b) Describe the importance of colostrum to young animals within the first week of birth. (10 marks)





---

.....

.....

.....

.....

.....

.....

.....

.....

.....

.....

.....

.....

.....

.....

.....

.....

.....

.....

.....

.....

.....