

ALLIANCE GIRLS HIGH SCHOOL MOCK 2017

AGRICULTURE PAPER 2

SECTION A (40 MARKS)

Answer ALL the questions in this section in the spaces provided.

1. What is a production ration as used in animal production? (2marks)
.....
.....
.....
.....
2. Give a reason for clipping needle teeth in piglets. (1mark)
.....
.....
3. Give **two** reasons for housing calves. (1mark)
.....
.....
.....
4. What are the functions of the following parts of a reciprocating mower? (3marks)
 - (i) Swath Stick.
.....
 - (ii) Shoe
.....
 - (iii) Cutter bar
.....
5. State **four** signs of infertility in a dairy cow. (2marks)
.....
.....
.....
.....
6. State **four** factors considered in housing management to control endoparasites. (2marks)
.....
.....
.....
.....

- 7. When is it necessary to supplement the feeding of bees? (1mark)
.....
.....
- 8. State **four** functions of oil when applied on farm machines (2marks)
.....
.....
.....
.....
- 9. List **two** maintenance practices of a tractor drawn sprayer. (2marks)
.....
.....
- 10. Give **two** reasons why teaser rams are introduced to a flock of ewes some weeks before tugging. (1mark)
.....
.....
- 11. State **two** reasons why honey harvesting is discouraged at night. (1mark)
.....
.....
- 12. Name five components of a tractor's cooling system. (2½marks)
.....
.....
.....
.....
- 13. State **four** factors that necessitate culling in sheep management (2marks)
.....
.....
.....
.....

14. State **four** measures that should be taken to prevent an outbreak of Newcastle disease in poultry. (2marks)

.....
.....
.....
.....
.....

15. Explain the term digestibility as used in Livestock production. (½ mark)

.....
.....
.....

16. What is the function of the carburetor in a tractor engine? (1 mark)

.....
.....

17. State **three** advantages of using wood in the construction of farm buildings. (2marks)

.....
.....
.....
.....

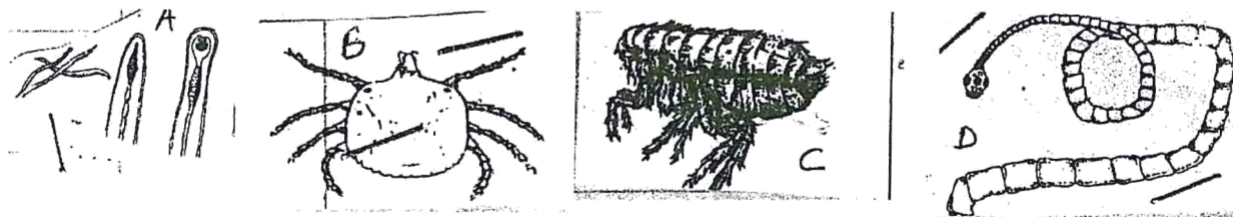
18. What is the role of the first candling of incubated eggs? (1mark)

.....
.....

SECTION B (20 MARKS)

Answer all the questions in this sections in the space provided.

19. Below are livestock parasites A, B, C and D. Use them to answer the questions that follow.



(i) Identify the parasite stating where they are found. (2mks)

Identity	Where found in animals
A
B
C
D

(ii) State two methods of controlling parasite B. (1mk)

(iii) State four effects of parasite A in animals. (2mks)

20. A ration containing 20% DCP is to be prepared using ground maize and fish meal. Given that ground maize contains 7% DCP and fish meal contains 62% DCP, calculate the amount in kilograms of each feedstuff required to prepare 100 kg of the feed. (3mks)

.....

.....

.....

.....

.....

.....

.....

21. The diagram below illustrates a method of identification in livestock production. Use it to answer the questions that follow.



i. Name the type of identification illustrated above. ($\frac{1}{2}$ mk)

.....

ii. Give the identification number of the animal illustrated in the diagram above. ($\frac{1}{2}$ mk)

.....

iii. Using diagrams, illustrate how you can identify animal number 24 and 36 using the above method. (2mks)

.....

.....

.....

.....

.....

.....

.....

.....

.....

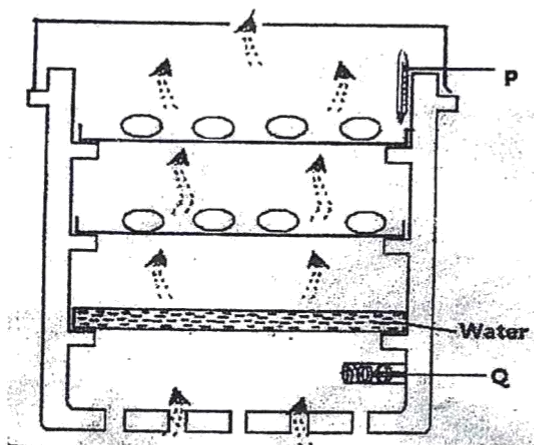
.....

- (b) If a sow was successfully served on 27th September 2016, state the date she is likely to have farrowed. $(\frac{1}{2}\text{mk})$

.....

.....

22. Study the diagram of artificial incubator below and answer the questions that follow.



- a) Identify the parts labelled P and Q (1mk)

P.....

Q.....

- b) Why is water provided in the incubator (1mk)

.....

.....

- c) What other factor not observed in the diagram has been provided. ($\frac{1}{2}\text{mk}$)

.....

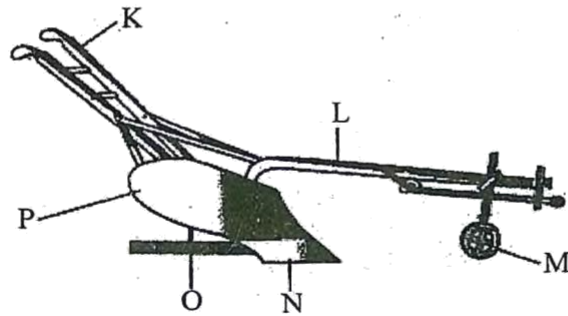
.....

- d) State one advantage of an artificial incubator (1mk)

.....

.....

23. Below is an illustration of a farm implement. Study it carefully and answer the questions that follow.



(a) Identify the farm implement. ($\frac{1}{2}$ mk)

(b) Name the parts labelled L, M, O and P. (2mks)

L.....

M.....

O.....

P.....

(c) Give **one** function of the parts K, M, N and P. (2mks)

K.....

M.....

N.....

P.....

(d) Give the adjustment on the farm implement to ensure deep ploughing with a wide slice. ($\frac{1}{2}$ mk)

SECTION C (40 MARKS)

Answer any two questions from this section in the spaces provided after question 26.

- 24. (a) Outline the maintenance practices of farm structures. (6marks)
- (b) Describe the requirement of an ideal calf pen. (6marks)
- (c) Describe the differences between diesel and petrol engines. (8marks)

- 25. (a) Discuss the measures that can be taken to control egg eating and cannibalism in poultry kept under deep litter system. (10marks)
- (b) Outline the various ways by which a dairy farmer can ensure high quality production of milk from his farm. (6marks)
- (c) Describe the observations on the behaviour of chicks which would indicate that the temperature of the brooder is high. (4marks)

- 26. (a) Discuss the management practices a farmer should carry out to control parasite infestation in livestock. (6marks)
- (b) Outline ways in which diseases can spread from one animal to another. (4marks)
- (c) Describe East Coast fever under the following sub-heading.
 - (i) Causal organism (1mk)
 - (ii) Livestock Species attacked (1mk)
 - (iii) Symptoms of attack (5mk)
 - (iv) Control measures. (3mks)

.....

.....

.....

.....

.....

.....

.....

.....

.....

.....

.....

.....

.....

.....

.....

.....

.....

.....

.....

.....

.....

.....

.....

