

# SUNSHINE SECONDARY SCHOOL MOCK 2015

## HOME SCIENCE PAPER 2

A pattern of a girl's blouse is provided. You are advised to study the sketches, instructions and the layout carefully before you begin the test.

### Materials provided

1. Pattern pieces
  - A - Blouse front
  - B - Blouse back
  - C - Collar
  - D - Pocket
  - E - Crossway strip
2. A plain light weight cotton fabric 65 cm by 75 cm.
3. Sewing thread to match the fabric.
4. One large envelope.
5. Embroidery thread 30cm long.

### THE TEST

Using the materials provided, cut out and make up the right half of the girl's blouse to show the following processes:-

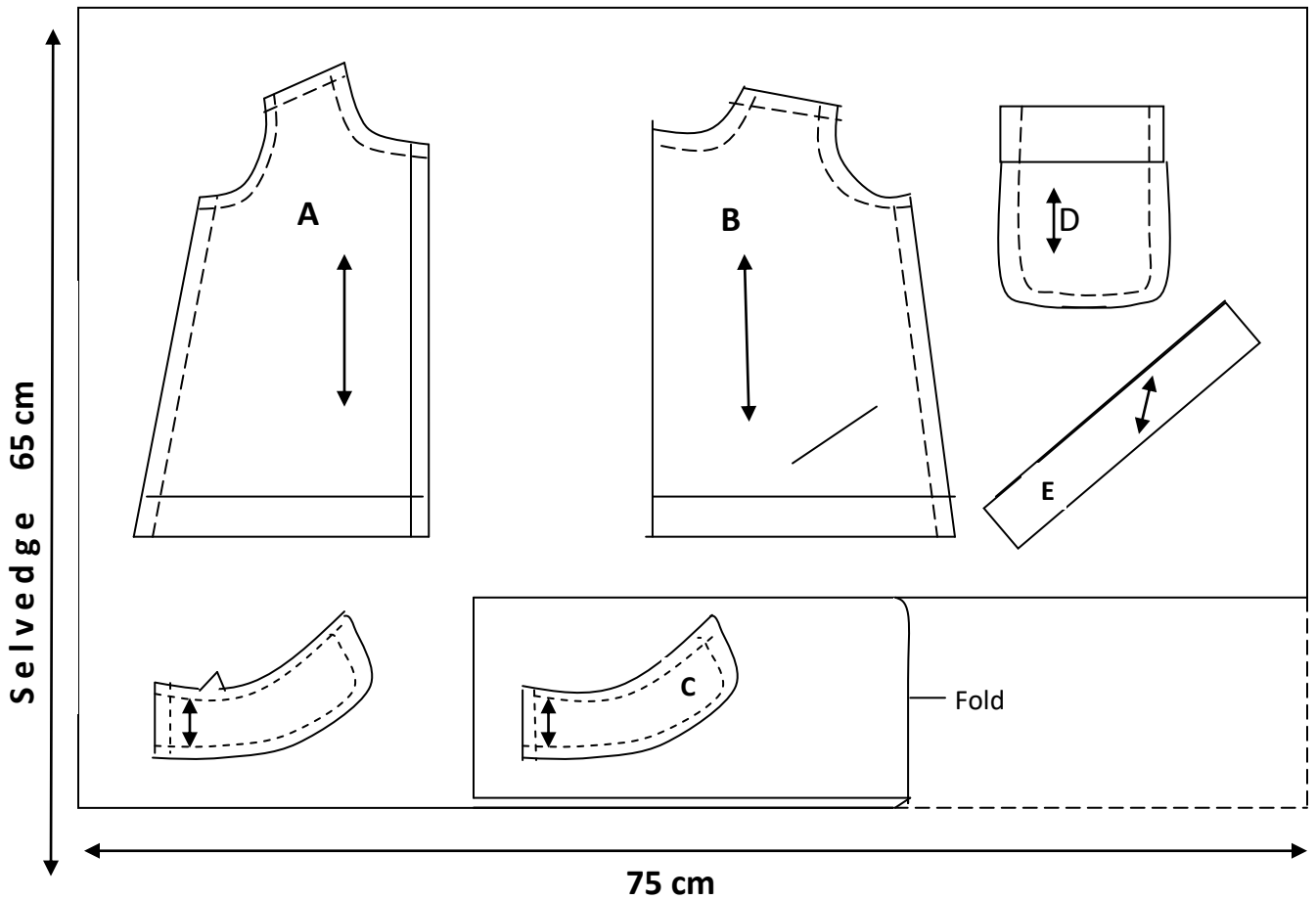
1. The making of the single pointed dart on the front blouse. **(6 marks)**
2. Making the outline of letter N on the pocket using chain stitch. **(4 marks)**
3. Preparation and the attachment of the pocket. **(12 marks)**
4. The making of the shoulder seam using an open seam. **(7 marks)**
5. The making of the side seam using French seam. **(7 marks)**
6. The preparation of the interfaced collar. **(6 marks)**
7. Attaching the collar on the neckline by binding method using the crossway strip.  
Finish the raw edge using even tacking stitches. **(6 marks)**
8. Make the cut at the blouse back and hold the tear with fishbone stitches. **(6 marks)**
9. The working of the button holes using hand worked button hole stitches. **(8 marks)**
10. Managing the lower edge of the blouse using hemming stitches. **(8 marks)**

**NB:**

At the end of the examination, firmly sew on your work on single fabric a label bearing your name and index number. Remove the needles and pins from your work, then fold your work neatly and place it in the envelope.

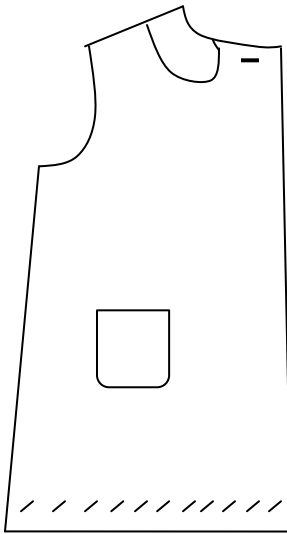
**DO NOT PUT SCRAPS OF FABRIC IN THE ENVELOPE AND DO NOT SEAL THE ENVELOPE.**

**LAYOUT- NOT DRAWN TO SCALE**



**VIEW**

**FRONT VIEW**



**BACK VIEW**

