

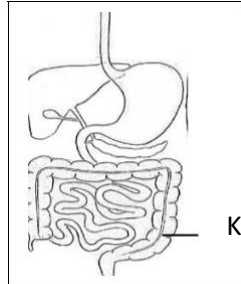
SHINYALU SOUTH CLUSTER

SCIENCE STD FIVE (5) 2020

1. Which type of tooth is used for grinding and chewing
- A. Molar and premolar
 - B. Molar and canine
 - C. Canine and incisor
 - D. Incisor and premolar

2. Air is cleaned in the
- A. Nose and trachea
 - B. Lungs and nose
 - C. Diaphragm and nose
 - D. Trachea and lung

3. The part of digestion shown below is
- A. Oesophagus
 - B. Large intestine
 - C. small intestine
 - D. deodenum



4. Food from the stomach moves to
- A. Oesophagus
 - B. Large intestine
 - C. Duodenum
 - D. pancrease
5. Absorption of food takes place in the
- A. Small intestine
 - B. Large intestine
 - C. Stomach
 - D. Mouth
6. Which sentence is true about HIV/AIDS
- A. HIV means the same as AIDS
 - B. People with HIV Have AIDS
 - C. HIV/AIDS has no treatment
 - D. Thin people have AIDS

7. The first HIV/AIDS stages of development is
- A. Window
 - B. Incubation
 - C. Symptomatic
 - D. Full blown

8. Medicine that remains after finishing the dose should be
- A. Given to the sick
 - B. Thrown in the pit
 - C. Kept for future use
 - D. Taken to the end

9. HIV/AIDS spread through
- A. sex
 - B. swimming
 - C. playing together
 - D. sharing food

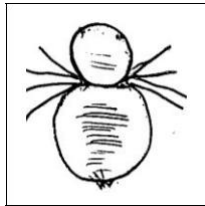
10. which one is important when storing medicine
- A. stored without labelling
 - B. stored in soda bottle
 - C. stored away from children
 - D. stored in a cold place

11. Which weather instrument measures temperature
- A. Raingauge
 - B. Air thermometer
 - C. Wind sock
 - D. Wind vane

12. Which material is the best to use for making Rain gauge
- Polythene bag
 - Sheet of metal
 - Plastic bottle
 - Coloured water

13. The clouds that bring rain are
- Cotton like
 - high in the sky
 - feathering
 - dark grey

14. Which animal is in the same group as the one drawn



- Crab
- Spider
- Grasshopper
- Millipede

15. Which sentence is true about a bat
- Body covered with feather
 - Lay eggs
 - Vary body temperature
 - Breath by lungs

16. Animals with backbones are called
- Cold blooded
 - Vertebrates
 - Warm blooded
 - Invertabrates

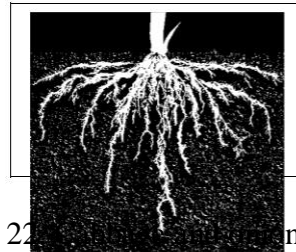
17. Goats gives us
- Wool
 - Milk
 - Beef
 - Eggs

18. Which characteristics is NOT for an animal
- Makes food
 - Grow
 - Die
 - Reproduce

19. Which one is a green plant
- Mushroom
 - Maize
 - Toadstool
 - Mould

20. Fern and mould are
- Green plants
 - Non green plants
 - Flowering plant
 - Non flowering

21. Which plant has the type of roots shown below



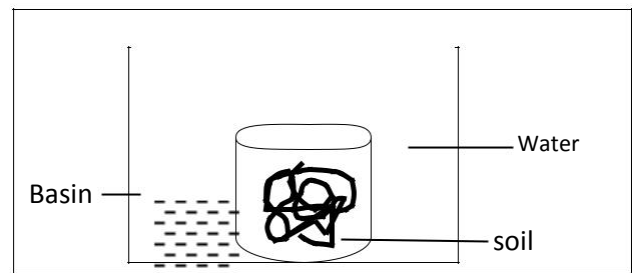
- maize
- Bean
- Pig weed
- Sodom apple

22. _____ns store food in the

- Leaves
- Stems
- Roots
- tap

23. Which one is a cash crop
- Maize
 - fruit
 - Tea
 - wheat

24. Pupils carried the following activities



After some time the water went down in the basin because

- Soil has animals
- Soil has organic matter
- Soil has air
- Soil has water

25. The feeling of soil between fingers is called
- A. Capillary
 - B. Textures
 - C. Drainage
 - D. Retention
26. Which soil is good in capillarity
- A. Clay
 - B. Sand
 - C. Loam
 - D. Stoney Dam
27. Which food has energy
- A. Beans
 - B. meat
 - C. mango
 - D. honey
28. Fibre helps in
- A. Minerals
 - B. Digestion of food
 - C. Removing undigested food
 - D. Giving carbohydrates
29. Kwarshorkor is caused by lack of ____
- A. Mineral
 - B. protein
 - C. carbohydrates
 - D. vitamin
30. Pupils ate beans, maize and _____ to make the food balanced diet
- A. Meat
 - B. Rice
 - C. Orange
 - D. egg
31. Which one is NOT a tool maintenance practice
- A. Cleaning tools
 - B. Ssafe keeping
 - C. proper use
 - D. oiling
32. which maintannce practice prevents accidents
- A. Oiling

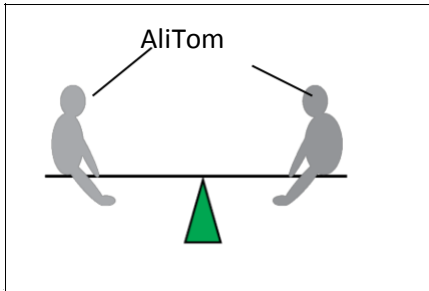
- C. Proper use
- D. Cleaning

E.

33. Beam balance measures

- A. Mass
- B. temperature
- C. pressure
- D. Rainfall

34. Pupils balance on a see-saw as shown below



Which sentence is true

- A. Ali is heavier than Tom
- B. Tom is heavier than Ali
- C. Tom and Ali have same mass
- D. Ali is lighter than Tom

35. Using water for enjoyment is

- A. Industrial
- B. domestic
- C. recreational
- D. Farm

36. Which one will damage ears

- A. Noise
- B. light
- C. Heat
- D. soft music

37. Water in an industry is stored in

- A. Tank
- B. Dam
- C. Drum
- D. Pots

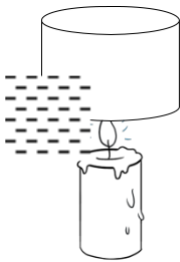
38. The best way of transporting water in town is

- A. Jericans
- B. Animals
- C. Tankers
- D. Pipes

39. Which one is a natural way of lighting a house
- A. Candle
 - B. Windows
 - C. Lamp
 - D. Fire

40. Which one is a use of light
- A. Warming
 - B. Cooking
 - C. Ironing
 - D. Seeing

41. The demonstration of heat transfer is

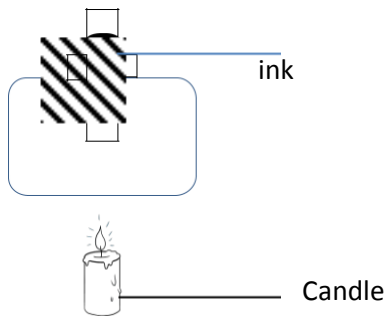


- A. Radiation
 - B. Convection
 - C. Conduction
 - D. Expansion
42. Which one is NOT an insulator
- A. Window curtains
 - B. Wollen cloths
 - C. Handles of a pan
 - D. Sufuria
43. Which one is an importance of lighting the house
- A. Warm ourselves
 - B. Discourage pests
 - C. Help cooking
 - D. Maintain colour
44. Which special sound means **give way**
- A. Hooting
 - B. Bell
 - C. Siren
 - D. Screams

45. Sound travels in
- Straight line
 - All direction
 - In a vacuum
 - In solids only
46. Loudness and softness of sound is changed by
- Size
 - volume
 - Shape
 - force
47. Pressure in liquids increase by
- Volume
 - container
 - depth
 - liquid

48. Which state of matter has definite volume
- Solid and gases
 - Liquid only
 - Solid and liquid s
 - Liquid and gases

49. Pupils heated the bottle



Where will the ink move

- Up
 - Down
 - up and down
 - remain at same place
50. Which list has solid s only
- Water and sand
 - Sand and floor
 - Water and milk
 - Vapour and steam