

# KCPE PREDICTION STANDARD 8 2023 SCIENCE

1. The following are some effects of abusing drugs

(i) Rape

(ii) Addiction

(iii) Truancy

(iv) Impaired judgement

(v) Induced accidents

Which of the following consists only of social effects of drug abuse?

A. (i), (iii), (iv)

B. (ii), (iii), (iv)

C. (i), (iii), (v)

D. (i), (iv), (v)

2. In which one of the following activities is water used in the farm?

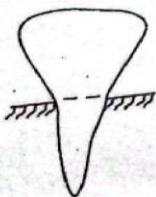
A. Making products

B. Washing tools and equipment

C. Swimming

D. Making pulp

3. The diagram below shows a certain type of human tooth.



Which statement is **not** true about the above tooth?

A. Used for cutting

B. Are 8 in number

C. Has ridge and cusp

D. Has one root

4. Which one of the following is **not** an adaptation of plants that grow in dry areas?

A. Are deciduous

B. Have thin cuticles

C. Have silvery shiny leaves

D. Have air sacs

5. Grade six learners were demonstrating how to form a rainbow. Which one of the activities below did **not** form a rainbow?

A. Spraying water into the air from mouth on a sunny day

B. Observing the sun through a transparent ball pen tube

C. Placing a mirror in water to face the sun

D. Placing a biro pen in water in a glass of water

6. Which statement below is true about liquids and gases?

A Liquids have definite shape

B. Gases have definite shape

C. Liquids have definite volume

D. Gases have indefinite mass

7. Which one of the following consists of foods that provide the body with energy?

A. Eggs, fish, beef

B. Bananas, carrots, oranges

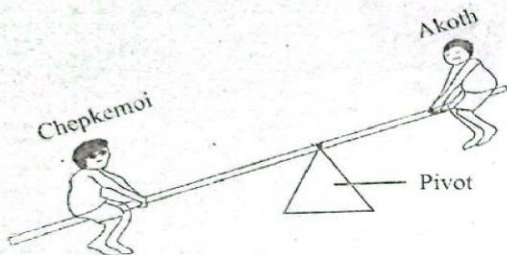
C. Kales, rice, mutton

D. Avocado, maize, groundnut

# KCPE PREDICTION STANDARD 8 2023 SCIENCE

8. The energy transformation that takes place in a torch that uses dry cells to operate is
- A. Mechanical → Electrical → Heat → light
  - B. Chemical → Electrical → heat → light
  - C. Chemical → Electrical → Light → Heat
  - D. Chemical → Mechanical → Electrical → Light

9. Chepkemoi and Akoth were playing on a see-saw as shown below.



In order for them to balance on the see saw,

- A. both should sit at the same position
  - B. the pivot should be moved towards Akoth
  - C. Chepkemoi should move near the pivot
  - D. Akoth should move near the pivot
10. Which among the following components of air is used in putting out fire?
- A. Oxygen
  - B. Rare gases
  - C. Nitrogen
  - D. Carbon dioxide

11. Which of the following processes are as a result of increase in temperature and a decrease respectively?

| <u>Increase</u> | <u>Decrease</u> |
|-----------------|-----------------|
| A. Melting      | Condensation    |
| B. Evaporation  | Melting         |
| C. Freezing     | Condensation    |
| D. Condensation | Evaporation     |

12. Which method of preserving food below keeps food for long by making bacteria inactive?

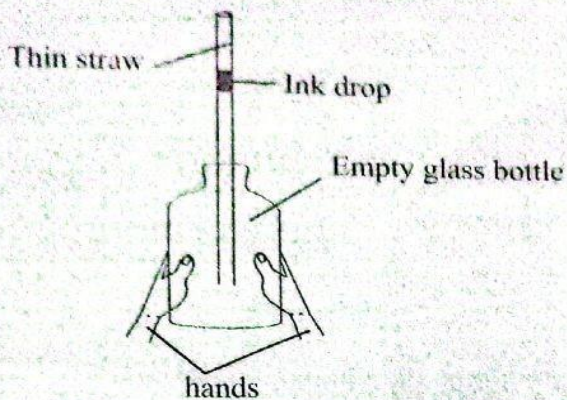
- A. Drying
- B. Salting
- C. Use of honey
- D. Use of low temperatures

13. Which of the following processes of birth occurs last?

- A. Release of afterbirth
- B. Breaking of amnion sac
- C. Expulsion of the baby
- D. Contraction of uterine wall

14. The following are sources of energy. Which one does **not** contain chemical energy?

- A. Car batteries
- B. Dry cells
- C. Firewood
- D. Bicycle dynmo



Which property of matter were the learners investigating? That

- A. liquids expand when heated
- B. liquids occupy space
- C. gases increase in volume when heated
- D. gases have definite volume

16. Grade seven learners collected the following materials during a Science lesson.

- (i) Nail
- (ii) Dry cells
- (iii) Bulb
- (iv) Copper wire
- (v) Rubber band

What were they **likely** to investigate?

- A. Good and poor conductors of heat
- B. Sources of electricity
- C. Good and poor conductors of electricity
- D. How light travels

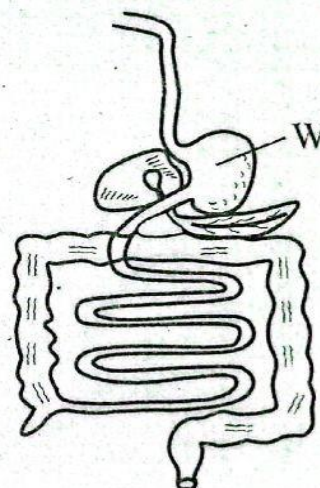
its expiry date. Which of the following signs and symptoms was not observed on him when taken to the hospital?

- A. Felt dizzy
- B. Vomiting
- C. Diarrhoea
- D. Headache

18. Vehicle exhaust fumes **mainly** pollutes

- A. water and air
- B. soil and water
- C. air and soil
- D. air only

19. The diagram below shows the human digestive system.



The part marked **W** is responsible for

- A. absorbing water and mineral salts
- B. absorbing digested foods
- C. mixing food with digestive enzymes
- D. storing undigested foods

have

- A. strong front limbs
- B. hollow bones
- C. streamlined bodies
- D. strong hind limbs

21. A child with shortness of breath has all the following signs **except**

- A. tiredness after short task
- B. pale white eyes
- C. muscle wastage
- D. dizziness

22. Which one of the following substances is **not** transported by the plasma in the blood circulatory system?

- A. Oxygen
- B. Digested food
- C. Urea
- D. Carbon dioxide

23. Which among the following drugs when abused is **not** illegal?

- A. Cocaine
- B. Bhang
- C. Cobbler's glue
- D. Alcohol

24. The **main** reason why pigweed is controlled before flowering stage is to

- A. kill them completely
- B. avoid the spread of weeds
- C. prevent loss of soil nutrients
- D. prevent loss of soil water

omnivorous animal?

- A. Dog
- B. Baboon
- C. Rhino
- D. Hippopotamus

26. The diagram below shows a type of bird's beak.



The bird is adapted to feed on

- A. flesh
- B. nectar
- C. grains
- D. fish

27. Water obtained from a river can be made to lather easily during laundry by

- A. cooling
- B. boiling
- C. adding detergent
- D. using a lot of soap

28. The following are sexually transmitted infections **except**

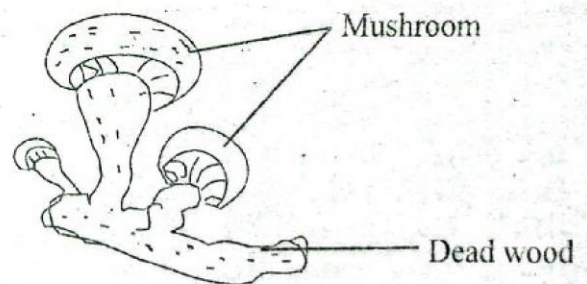
- A. Bilharzia
- B. Chancroid
- C. Gonorrhoea
- D. Syphilis

- B. make a lot of breast milk
- C. boost the babies' immunity
- D. prevent constipation

30. Which pair of plants below cannot make their own foods?
- A. Moss and bracket tree
  - B. Toadstool and fern
  - C. Mushroom and mould
  - D. Yeast and cider
31. The following are effects of ill health in livestock. Which one is **not**?
- A. Lower yields
  - B. Loss of weight
  - C. Low quality products
  - D. Transmission of diseases to consumers
32. After birth, a child is immunised at the age of 9 months in order to give immunity against
- A. Whooping cough
  - B. Measles
  - C. Polio
  - D. Tuberculosis

- infection was the person in?
- A. Incubation stage
  - B. Window stage
  - C. Symptomatic stage
  - D. Full blown stage

34. Which one of the following groups consists of only field pests?
- A. Weevils, aphids, weaver birds
  - B. Aphids, weaver birds, white ants
  - C. Weevils, white ants, stalk borers
  - D. Aphids, weaver birds, stalk borers
35. The diagram below shows an interdependence in plants.



- The interdependence shown above in plants is for
- A. habitat
  - B. shelter
  - C. shade
  - D. support

- B. Have moist scales
- C. Live partly in water
- D. Have constant body temperatures

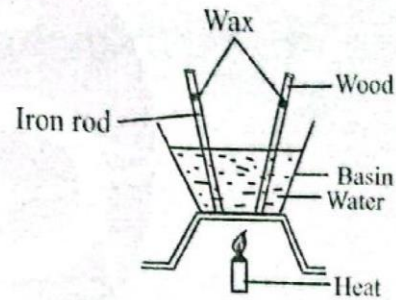
37. A mixture of salt solution, maize and iron filings can be separated by
- A. filtering, use of magnetic, evaporation
  - B. decanting, picking, winnowing
  - C. filtering, decanting, evaporation
  - D. winnowing, picking, evaporation

38. Which pair of components of the environment below consists of only living components?
- A. Air and water
  - B. Mushroom and locust
  - C. Building and light
  - D. Cactus and soil

39. Which of the following pairs consists of animals that produce muttton?
- A. Cow and sheep
  - B. Pig and sheep
  - C. Camel and goats
  - D. Sheep and goats

- A. Helps in erasing
- B. Helps in braking of vehicles
- C. Helps in swimming
- D. Helps in lighting fire

41. The diagram below shows an experiment carried out by grade five learners.



Which one of the following properties were the learners investigating?

- A. Convection in liquids
- B. How different solids conduct heat
- C. Good and poor conductors of heat
- D. Radiation of heat in matter

42. Pupils heated garden soil in an empty container and observed smoke being produced. Which component of soil was being investigated?

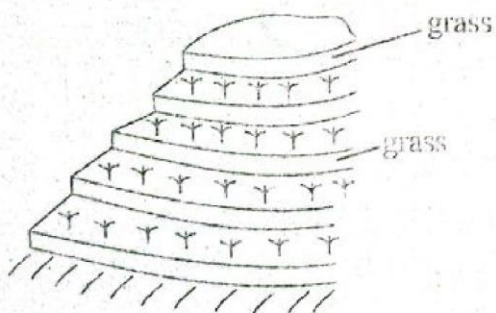
- A. Water
- B. Organic matter
- C. Living things
- D. Air

- B. Alnico rod
- C. Steelwool
- D. Razorblade

44. Which one of the following materials is an opaque material?
- A. Frosted glass
  - B. Mirror
  - C. Kerosene
  - D. Oiled paper

45. All of the following are safety precautions during lightning **except**
- A. wearing gumboots with thick soles
  - B. walking on open fields
  - C. not using umbrellas
  - D. not sheltering under trees

46. The diagram below shows a method of conserving soil.



The above method is called

- A. cover cropping
- B. mulching
- C. contour farming
- D. cultivating across the contours

- C. baby crying
- D. ambulance

48. All of the following are rotational methods of grazing **except**
- A. herding
  - B. paddocking
  - C. tethering
  - D. strip grazing

49. Which one of the following livestock parasites attacks sheep and causes falling off of wool?
- A. Ticks
  - B. Mite
  - C. Flea
  - D. Tsetse flies

50. In human reproductive system, the male sex cells are produced in the
- A. penis
  - B. testis
  - C. ovary
  - D. urethra