

CLASS 7 END TERM 3 MARCH 2022

SCIENCE

1. Which of the following diseases is among the diseases an infant is immunized against within the first month after birth?
 - A. Measles.
 - B. Tuberculosis.
 - C. Tetanus.
 - D. Diphtheria.

2. The following are practises that ensure one has healthy teeth. Which one is not?
 - A. Eating a balanced diet.
 - B. Chewing hard foods.
 - C. Removing milk teeth on time.
 - D. Gurgling with sugary water once a while.

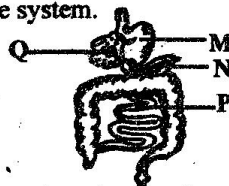
3. The following are drug effects that may be seen on users:
 - i) Leads to high appetite.
 - ii) Sudden mood change.
 - iii) Headache and chest pain.
 - iv) Staggering.
 - v) Users become irresponsible.
 Which effects are found in users of bhang only?
 - A. i, ii, iii
 - B. i, ii, iv
 - C. ii, iii, iv
 - D. i, ii, v

4. The word 'LION' was written on a plain paper and then placed in front of a mirror. Which is the correct appearance of the word in the mirror?
 - A. LION
 - B. FION
 - C. LI0N
 - D. N0LI

5. The following activities take place during the process of breathing in:
 - i) Diaphragm flattens.
 - ii) The ribs move upwards and outwards.
 - iii) The volume of the chest cavity increases.
 - iv) Air gets into the lungs.
 - v) Lungs inflate.
 What is the correct order of the process beginning with the first one?
 - A. v, i, iv, ii, iii.
 - B. v, iv, iii, i, ii.
 - C. i, ii, iii, iv, v.
 - D. v, iv, iii, ii, i.

6. The following are statements about the human heart. Which statement is not true? The
 - A. left ventricle is thicker than the right ventricle.
 - B. blood goes to the lungs through the pulmonary vein.
 - C. heart has valves that prevent the backflow of blood.
 - D. auricles receive blood from veins.

7. The diagram below shows the human digestive system.



Which part is not correctly matched with its function?

- | Part | Function |
|------|------------------------------|
| A. Q | production of bile. |
| B. M | digestion of food. |
| C. N | produces digestive juice. |
| D. P | absorption of digested food. |
8. The following are changes that take place during adolescence:
 - i) Hips broaden.
 - ii) Appearance of pimples.
 - iii) Growth of body size.
 - iv) Breast enlargement.
 - v) Voice breaks.
 Which changes are for adolescent girls?
 - A. i, ii, iii, iv
 - B. ii, iii, v
 - C. i, ii, iii, v
 - D. ii, iii, iv, v

 9. In which stage of HIV is the body of the patient highly prone to opportunistic infections since it cannot fight disease causing germs?
 - A. Window.
 - B. Symptomatic.
 - C. Asymptomatic.
 - D. Full blown.

10. Planets that are in the 4th and 8th positions from the sun are
 A. Mercury and Neptune.
 B. Pluto and Venus.
 C. Mars and Neptune.
 D. Saturn and Pluto

11. Which one of the following animal feeds provides animals with energy?
 A. Fish meal B. Mollasses
 C. Bone meal D. Lucerne

12. Which of the following groups of simple machines is made of levers of the same class?
 A. Crowbar and claw hammer.
 B. Crowbar and wheelbarrow.
 C. Wheelbarrow and spade.
 D. Spade and claw hammer.

13. The main reason why carbon dioxide is used in extinguishing fire is that it
 A. is denser than air.
 B. does not support burning.
 C. supports burning.
 D. occupies the smallest percentage.

14. Which of the substances below has a definite volume but no definite shape?
 A. Wheat flour B. Smoke
 C. Milk D. Marble

15. Which method of food preservation preserves food by removing excess moisture?
 A. Use of honey. B. Freezing.
 C. Salting. D. Smoking.

16. Below is a lever at work.



In which of the parts will one apply the effort to do the work easily?

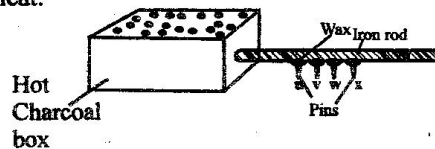
- A. W B. X C. Y D. Z

17. Which of the following plants will make its own food but it has no flowers?
 A. Fern. B. Mould.
 C. Mushroom. D. Toadstool.

18. Which one of the following crop pests is incorrectly matched with the damage it cause on the crop?

Crop pest	Type of damage
A. Weevils	bore holes on seeds.
B. Weaver birds	eat grains.
C. Aphids	cut stems of young plants.
D. Stalk borers	bore holes on the stems.

19. The diagram below shows an experiment set up to demonstrate a certain aspect of heat.



The experiment shows that

- A. solids change state when heated.
 B. metals expand when heated.
 C. solids conduct heat.
 D. metals expand when they are heated.

20. Which of the following is a reason why tanks are fitted with thicker walls at the bottom? To
 A. hold more water.
 B. be wide at the bottom.
 C. withstand pressure.
 D. avoid evaporation.

21. Pressure in liquids is changed by all the following except
 A. increasing the height of water.
 B. decreasing height of water.
 C. adding the amount of liquid.
 D. lifting the liquid container higher.

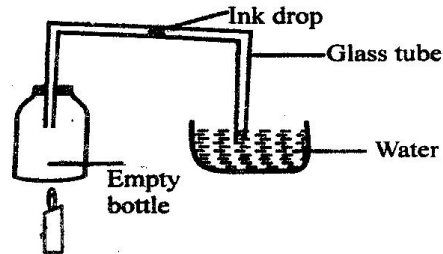
22. Friction can be increased on wheels of vehicles by
 A. lubricating them.
 B. loading the vehicles heavily.
 C. applying emergency brakes.
 D. removing pressure from the wheels.

23. Which food groups may not add nutrients to the body but still useful to the body?
 A. Vitamins and carbohydrates
 B. Proteins and roughages.
 C. Water and roughages.
 D. Vitamins and starch.

24. Which one of the following examples of plants have a fibrous root system?
 A. Peas, beans, cabbage.
 B. Sugarcane, millet, maize.
 C. Coconut, tomato, blackjack.
 D. Grass, cabbage, coconut.
25. Which of the following methods of controlling pests will best control tapeworms and flukes?
 A. Deworming. B. Rotational grazing.
 C. Spraying. D. Picking.
26. A house can be lit naturally by using
 A. translucent roofs
 B. opening windows
 C. sunlight.
 D. fireflies.
27. Which of the following groups of mixtures cannot be separated by using a magnet, picking or sieving? A mixture of
 A. iron filings, beans and sand.
 B. copper filings, aluminium filings and maize flour.
 C. nickel filings, maize seeds and soil.
 D. flour, iron filings and wheat grains.
28. Which of the following statements explains why the scale in the air thermometer reads from top to bottom? The high temperatures
 A. result in air contraction.
 B. push the water downwards.
 C. cause evaporation.
 D. may cause bubbles.
29. In a feeding relationship, which organism supports the food chain?
 A. Producers.
 B. Primary consumers.
 C. Secondary consumers.
 D. Tertiary consumers.
30. Which change of state among the ones given below requires heat absorption from the surrounding?
 A. Melting and freezing.
 B. Freezing and evaporation.
 C. Evaporation and melting.
 D. Condensation and freezing.
31. Which of the following methods mainly conserves soil water?
 A. Drip irrigation
 B. Mulching.

- C. Storing water in dams.
 D. Growing cover crops.

32. The figure below shows a set up to demonstrate certain properties of matter.



- What happened if the empty bottle was heated gently? The
 A. ink drop moved toward the bottle.
 B. water level in the trough dropped.
 C. water level in the glass tube dropped.
 D. water level in the tube rose.
33. A boat made of wood and metal floats in the lake water because of its
 A. size B. material C. shape D. mass
34. The main function of the C-shaped rings in the trachea is to
 A. clean the air.
 B. allow passage of air.
 C. allow exchange of gases.
 D. keep it open always.
35. Which of the following lists consists of vertebrates only?
 A. Tick, spider, mites.
 B. Crocodile, snake, tortoise.
 C. Frog, toad, lizard.
 D. Dolphin, shark, tilapia.
36. Which of the following is likely to be a mode of transmission of HIV?
 A. Blood transfusion.
 B. Sharing sterilized piercing tools.
 C. Sharing utensils.
 D. Sleeping in the same bed with the infected.
37. Which one of the following statements is not true about blood vessels that carry away blood from the heart? They
 A. have valves.
 B. have thick elastic walls.
 C. have a pulse.
 D. carry blood under high pressure.

38. In a certain investigation, pupils shone a torch light behind objects one at a time. The aspect being investigated was
 A. sources of light.
 B. uses of light.
 C. how light travels.
 D. passage of light through materials.

39. The following practices help to prevent the spread of diseases:
 i) *Covering pit latrines after use.*
 ii) *Spraying chemicals on stagnant water*
 iii) *Wearing protective clothing when walking in stagnant water.*
 iv) *Draining stagnant water.*
 Which two practices help to prevent the spread of both malaria and bilharzia?
 A. ii and iv. B. i and iii.
 C. i and iv. D. iii and iv

40. Which one of the following parasites does not attack pigs?
 A. Lice. B. Fleas. C. Ticks. D. Mites.

41. The following are function of stems:
 i) *Holding the branches.*
 ii) *Storage of food.*
 iii) *Transportation of water and minerals*
 iv) *Breathing.*
 Which one of the following functions are performed by all stems?
 A. i and iv. B. i and ii.
 C. i and iii. D. ii and iv.

42. Tamara kicked a ball along a flat floor. The ball eventually stopped on its own. The main reason the ball stopped was
 A. the force of gravity enabled it to stop.
 B. there was wind acting in the opposite direction.
 C. air in the ball increased resistance.
 D. the force of friction was acting on the ball.

43. Which of the following is the most important to consider when buying medicine from a chemist?
 A. The date of expiry.
 B. The date of manufacture.
 C. How to store it.
 D. The dose.

44. Standard seven pupils, Mercy, Nemwel, Obed and Patrick stated the advantages and disadvantages of friction as shown in the table below

Name	Advantages	Disadvantages
Mercy	walking on road	causing tear
Nemwel	Erasing with rubber	making work hard
Obed	Lighting a match box	riding bicycles
Patrick	Braking a bicycle	causing wearing out

Which pupil gave an **incorrect** response?
 A. Mercy B. Nemwel C. Obed D. Patrick

45. Which of the following shows a list of ways in which plants depend on each other for survival?
 A. Habitat, shade, food.
 B. Pollination, manure, medicine.
 C. Decomposition, pollination, support.
 D. Support, shade, habitat.
46. Jane saw their house girl using the same water she used to rinse clothes to clean the toilet. In this activity, the girl was
 A. recycling water.
 B. storing water.
 C. re-using water.
 D. using watersparingly
47. Which of the following organic manures takes the longest time to prepare and release nutrients to crops?
 A. Organic mulches B. Farmacyard manure
 C. Compost manure D. Green manure
48. The soil that allows water to rise the highest has three of the following characteristics **except**
 A. large particles.
 B. small air spaces.
 C. cracks when dry.
 D. makes long ribbons
49. Class six pupils brought water, basin, a clear mirror and a white board. They were likely to investigate
 A. dispersion of light.
 B. refraction of light.
 C. reflection of light.
 D. how light travels.
50. A pair of forms of energy that requires no medium for the transmission is
 A. heat and light B. sound and electricity
 C. sound and light D. heat and electricity