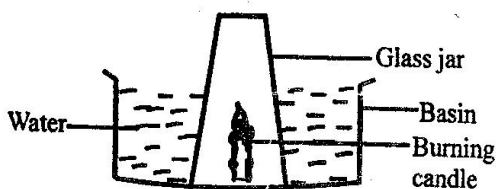


CLASS 6 END TERM 3 MARCH 2022

SCIENCE

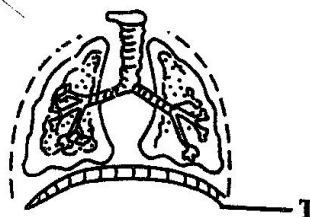
- Which one of the following pairs of diseases is **correctly** matched with the time of immunization?

<u>Six weeks</u>	<u>Nine months</u>
A. Polio	tetanus.
B. Measles	tuberculosis.
C. Diphtheria	pertusis.
D. Pertusis	yellow fever.
 - Which one of the following is the importance of roughage in the human diet? It is useful in
 - digestion of food.
 - absorption of nutrients.
 - absorption of mineral salts.
 - preventing constipation.
 - Which of the following statements is true about all reptiles? They
 - are cold blooded invertebrates.
 - lay eggs in water.
 - lay unfertilized eggs on land.
 - have dry scales.
 - Which of the following factors determines the rate at which water rises in soils?
 - Volume of the soil.
 - Size of the soil particles.
 - Humus content in the soil.
 - Amount of air content in the soil.
 - Class six pupils set up an experiment as shown in the diagram below.
- In order to determine the composition of soil, which of the following ways can Juliet use?
 - Sample of soil, water, transparent bottle.
 - Sample of soil, funnels, collecting jars, measuring cylinders.
 - Sample of soil, collecting jars, glass tubes.
 - Sample of soil, funnels, glass tubes, source of heat.
 - The following are signs of a certain disease:
 - Fever.*
 - Violent diarrhoea.*
 - Vomiting.*
 - Severe headache.*
 - Severe dehydration.*Which of the signs are for cholera?
 - i and ii
 - iii and iv
 - ii and iii
 - iv and v
 - Which one of the following is the second stage in reproduction?
 - Pollination.
 - Fusion.
 - Pollen tube breaks.
 - Germination of pollen tube.
 - The diagram below shows the human breathing system.



The experiment shows that

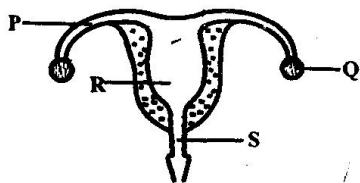
- air has mass.
- air is a mixture of gases.
- part of air is used up in burning.
- matter occupies space.



When breathing in, the sheet of muscle labelled T

- moves upwards.
- flattens.
- moves outwards.
- increases in volume.

10. Which of the following is a common physical change in adolescents?
 A. Production of sex cells.
 B. Hips broaden.
 C. voice breaks.
 D. Enlargement of breasts.
11. When the tail of a windvane points to the west, wind must be blowing from
 A. west to east.
 B. east to west.
 C. north to east.
 D. south to west.
12. Which one of the following characteristics can be used to identify molars?
 A. One root and chisel shape.
 B. Presence of cusps and ridges.
 C. One root and ridges.
 D. Ridges and chisel shape.
13. Which property of soil leads to flooding in the flat lands of Budalangi?
 A. Stickiness. B. Fine texture.
 C. Poor drainage. D. High capillarity.
14. In which of the following does sound travel slowest?
 A. Solids B. Vacuum
 C. Liquids D. Gases
15. The diagram below shows a female reproductive system.




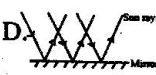


Which of the labelled parts of the diagram allows room for implantation?

- A. P B. Q
 C. R D. S
16. Which pair of materials below floats on water because of what it is made of?
 A. Sulfur and bottle.
 B. Plasticine and wood.
 C. Wood and wax.
 D. Wax and sulfur.

17. The following are methods of maintaining simple tools.
 i) *Cleaning after use.*
 ii) *Proper storage.*
 iii) *Sharpening.*
 iv) *Proper use.*
 Which pair consists of methods, that when applied, can prevent accidents?
 A. ii and iv
 B. i and ii
 C. iii and iv
 D. i and iii
18. When a force equal to the force of a moving object is applied on the opposite direction, it
 A. continues moving.
 B. moves backwards.
 C. stops.
 D. decreases the speed.
19. Which property of use of light leads to the formation of shadows?
 A. Dispersion.
 B. Light travels in a straight line.
 C. Reflection of light.
 D. Refraction.
20. A component of air used for germination is also required for
 A. burning substances.
 B. preserving soft drinks.
 C. manufacturing proteins.
 D. making bulbs.
21. Which of the plants below has no nodules?
 A. Maize and potatoes.
 B. Cabbage and millet.
 C. Groundnuts and peas.
 D. Tomatoes and beans.
22. Which one of the following have a definite shape, size and mass?
 A. Wax, water, oxygen
 B. Glue, toothpaste, spirit
 C. Paper, steam, stone
 D. Flour, stone, salt.

23. Which of the following organs produces sex cells?
 A. Testes B. Penis
 C. Uterus D. Oviduct
24. Which of the following consists of foods that are suitable for a child suffering from kwashiorkor?
 A. Beef, cassava, potatoes.
 B. Mutton, maize, pawpaw.
 C. Peas, beans, eggs.
 D. Carrots, bananas, tomatoes.
25. Which one of the following is advisable when handling spraying chemicals?
 A. Washing hands before spraying.
 B. Wearing an overall.
 C. Spraying against the wind.
 D. Spraying when temperatures are very high.
26. Which one of the following methods of grazing requires the largest piece of land?
 A. Herding B. Stall feeding.
 C. Tethering. D. Paddocking.
27. Which one of the following is the reason why taps are fitted at the bottom of water tanks? To
 A. let all water out.
 B. increase pressure.
 C. make water flow fast.
 D. increase gravity.
28. Which of the following shows a pair of functions of all roots?
 A. Absorption and anchorage.
 B. Absorption and storage of food.
 C. Manufacturing of food and storage of food.
 D. Breathing and anchorage.
29. Which one of the following animals lays unfertilized eggs?
 A. Cricket B. Newt
 C. Turtle D. Python
30. Which one of the following is a source of heat?
 A. Firefly B. Moon
 C. Torch D. Sun
31. Which one of the following plants stores their food the same way as sweet potatoes?
 A. Irish potatoes B. Kales
 C. Onions D. Cassava
32. Which one of the following processes does **not** require a decrease in temperature in order to take place?
 A. Contraction B. Condensation
 C. Freezing D. Melting
33. A beam balance is used when
 A. comparing masses of objects.
 B. comparing weights of objects.
 C. comparing sizes of objects.
 D. measuring masses of objects.
34. Which of the following animals are **correctly** classified according to their products?
- | <u>Sheep</u> | <u>Cattle</u> | <u>Goats</u> |
|--------------|---------------|--------------|
| A. Wool | beef | dairy. |
| B. Dairy | wool | mutton. |
| C. Dairy | beef | dairy. |
| D. Mutton | mohair | mutton. |
35. Which of the following is **not** a source of proteins to animals?
 A. Desmodium.
 B. Napier grass.
 C. Lucerne.
 D. Cloves.
36. Which of the following plants is **not** green and non-flowering?
 A. Fern B. Cypress
 C. Mass D. Cactus
37. The correct unit for measuring a push or a pull is
 A. tonnes B. grams
 C. newtons D. kilograms

38. The **main** reason why animals are fed on commercial feeds is to
- supplement other foods.
 - improve body immunity.
 - increase production.
 - increase body size.
39. Which of the following methods of food preservation is both modern and traditional?
- Canning
 - Freezing
 - Salting
 - Drying
40. Which among the following water borne diseases can be controlled by draining stagnant water?
- Malaria
 - Bilharzia
 - Typhoid
 - Cholera
41. In which one of the following parts of the digestive system does absorption of digested food take place?
- Stomach.
 - Colon.
 - Mouth.
 - Ileum.
42. Which of the following diagrams shows that light can be bent?
- A. 
- B. 
- C. 
- D. 
43. The following are characteristics of insect pollinated flowers **except**
- large coloured petals.
 - brightly coloured petals.
 - presence of nectar.
 - light pollen grains.
44. The method of grazing where animals are fed on fodder and commercial feeds within a permanent enclosure is
- paddockging.
 - herding.
 - stall feeding.
 - tethering.
45. Farmers are advised to carry out mulching **mainly** to
- prevent soil erosion.
 - conserve moisture.
 - eradicate weeds.
 - make soil fertile.
46. Birds are not different from mammals since **both**
- breath through gills.
 - are cold blooded.
 - their bodies are covered with fur.
 - breath through lungs.
47. Grade four pupils observed the sky and saw clouds with the following characteristics:
- Thick and white.**
 - Flat base**
- The type of clouds the pupils observed is also **likely** to
- bring rain.
 - occur low in the sky.
 - be seen on fine weather.
 - bring thunderstorms.
48. The **best** way of controlling weeds is by
- uprooting.
 - digging out.
 - using chemicals.
 - slashing
49. A jar that is used for measuring rainfall should be
- long and white
 - short and narrow.
 - short and wide.
 - long and narrow.
50. Which one of the following is **not** a use of water in industries?
- Irrigating crops.
 - Cooling moving parts of machines.
 - Mixing chemicals.
 - Making beverages.