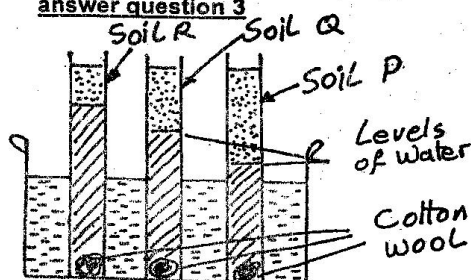


CLASS 8 MID TERM 3 2021 SCIENCE

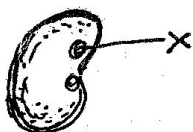
- During breathing, the nose performs the following functions **EXCEPT** one. Which one is it?
 A. It warms the air B. It absorbs the air
 C. It moistens the air D. It filters the air
- Which one of the following crop pests is correctly matched to the damage it causes?

A. Stalkborer	Sucks juices from vegetable leaves
B. Aphids	Cut stems of young vegetables
C. Weevils	Bore holes in grains
D. Cutworm	Make holes in leaves of water

Study the diagram below and use it to answer question 3

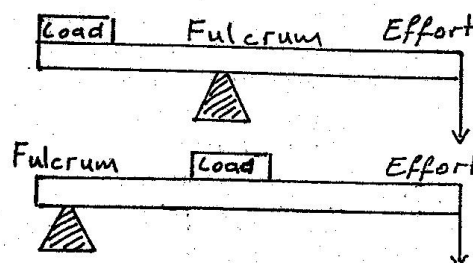


- All the following must be the same in the above experiment except one. Which one?
 A. Size of the tube
 B. Size of the cotton wool
 C. Amount of soil
 D. Type of soil
- Which one of the following groups of food stuffs constitutes a balanced diet?
 A. Rice, chapati, beef
 B. Potatoes, peas, spinach
 C. Ugali, beans, eggs
 D. Chicken, cabbage, eggs
- The diagram below is a bean seed



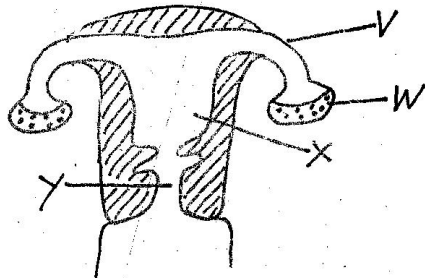
If the part marked X is smeared with glue and the seed is planted where all the conditions for germination are provided, which one of the following conclusions is likely to be made?

- Germination will not take place
 - The plumule will not come out first
 - The radicle will come out later
 - There will be multiple germinations
- Which one of the following statements is **NOT** true about interdependence?
 A. Plants and animals depend on each other for oxygen and carbon dioxide
 B. Birds depend on plants for shelter
 C. Some modern plants are extracted from plants
 D. Animals depend on plants for carbon dioxide
 - Which one of the following is not a use of water for recreation?
 A. rearing fish B. skiing
 C. boat racing D. surfing
 - Which one of the following is a modern method of preserving food?
 A. canning B. salting
 C. smoking D. drying
 - A certain machine when in use, can work with load, effort and fulcrum at different positions as



- The machine is a _____
- wheelbarrow
 - crowbar
 - spade
 - hammer

10. Which of these factors that affect floating and sinking causes heavy objects to float and light objects to sink?
- Amount of object
 - The size of object
 - The material of object
 - The shape of object
11. At which stage of HIV infection does opportunistic diseases occur?
- symptomatic stage
 - full blown
 - incubation
 - window
12. Which of the following is a social effect of drug abuse?
- coma
 - fits
 - rape
 - impaired judgement
13. The 3rd and 4th planets from the sun respectively are _____
- Mars and Neptune
 - Jupiter and Mars
 - Venus and Mercury
 - Earth and Mars
14. The diagram below represents the reproductive system in a female body

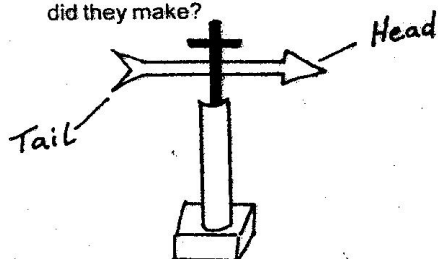


What part does implantation of embryo take place?

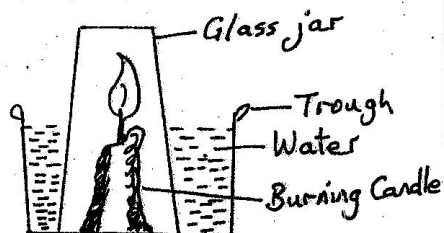
- W
- X
- Y
- V

15. Which gases dissolve in water to form acid rain?
- Sulphur dioxide and carbon dioxide
 - Hydrogen and oxygen
 - Nitrogen and carbon dioxide
 - Hydrogen and nitrogen
16. A certain drug has the following effects
- Breathing problems**
 - Dizziness**
 - Vomiting**
 - Brain damage**
- Which one of the following drugs has the above effects?
- Bhang
 - Inhalants
 - Mandrax
 - Heroin
17. Which one of the following is NOT a safety precaution against lightening?
- Avoid walking in open fields when it is raining
 - Not sheltering under trees when it is raining
 - Swimming in pools when it is raining
 - Fitting lightening arrestors
18. Which one of the following shows the correct order of blood flow in the heart?
- Vena cava → pulmonary artery → pulmonary vein → aorta
 - Pulmonary artery → venacava → pulmonary vein → aorta
 - Pulmonary vein → aorta → pulmonary artery → vena cava
 - Aorta → pulmonary vein → vena cava → pulmonary artery
19. Which one of the following is not an example of rotational grazing? _____
- strip
 - paddockking
 - herding
 - tethering
20. Osawa was driving on a tarmac road. The road looked wet from a distance but he could not find any water on the road. What do you think made the road to look wet from a distance?
- dispersion
 - absorption of light
 - refraction
 - reflection

21. Standard five pupils in Happy Baby shine academy made mistake while making the weather instrument below. Which mistake did they make?



- A. Not painting it with black strips
 B. Not giving compass direction
 C. Not giving it firm support
 D. Giving it heavy tail
22. $\frac{1}{5}$ of the air in the atmosphere is made up of
 A. carbon dioxide B. rare gases
 C. oxygen D. nitrogen
23. Standard 6 pupils in Kamagambo primary school had set up the experiment as shown below. The following were the observations made by the pupils except?



- A. Water level in the trough will go down
 B. Candle will go off after sometimes
 C. Candle will not go off after sometimes
 D. The water level in the glass will rise up
24. Which one of the following stuffs improve the eye - sight when include in the human diet?
 A. Milk, millet, kale
 B. Pumpkins, carrots, spinach
 C. Liver, avocadoes, eggs
 D. Cow peas, kidney, soya beans

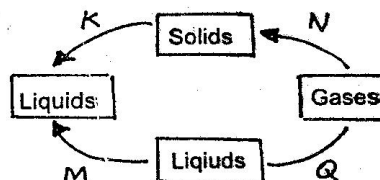
25. Friction has all the following advantages EXCEPT

A. producing fire B. writing
 C. braking D. skating

26. Which one of the following is not a green plant?

A. Algae B. Lichens
 C. Moss D. Fern

27. The following are changes of states in water. The process represented by letters M and N, respectively. _____

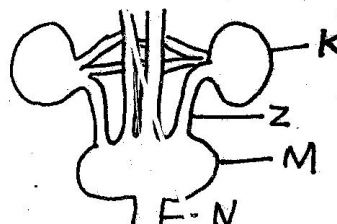


A. Condensation and melting
 B. Sublimation and freezing
 C. Evaporation and vaporization
 D. Melting and sublimation

28. Which one of the following is not a problem related to teeth? _____

A. tooth shedding B. tooth decay
 C. plague D. cavities

29. Name the parts, respectively. _____

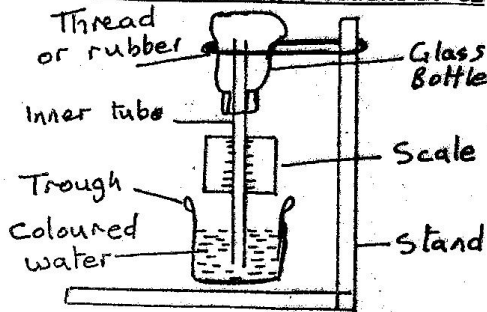


A. Kidney, ureter, bladder, urethra
 B. Urethra, ureter, bladder, kidney
 C. Ureter, bladder, kidney, urethra
 D. Urethra, bladder, ureter, kidney

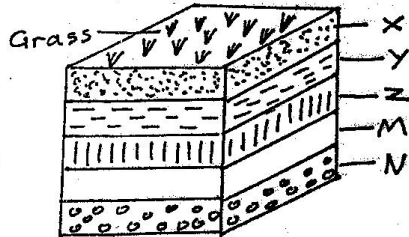
30. The following are characteristics of nimbus cloud except _____

A. They often bring rain
 B. They are found high in the sky
 C. They are found low in the sky
 D. They are dark grey in colour

Use the experiment drawn below to answer the following questions 31- 32



31. The following will happen when both hands are placed on top of the glass bottle except?
- The coloured liquid will drop in the inner tube
 - The coloured liquid will drop in the trough
 - It will read rise in temperature
 - The water will not move downward
32. Which mistake did they make?
- Using narrow tube
 - Using coloured liquid
 - Using glass bottle
 - Labelling the scales
33. The pupils at Tuk-jowi primary school were told to make the compost pit below.



Name the parts marked N, M, X, Y, Z respectively?

- Maize stalk, kitchen remain, top soil, ash, animal dung
- Kitchen remains, top soil, maize stalk, animal dung, ash
- Ash, maize stalk, top soil, animal dung, kitchen remain
- Maize stalk, kitchen remains, ash, top soil, animal dung

34. When two objects of different masses are dropped from the same height to the ground
- They collide
 - The lighter one falls in time
 - They fall at the same time
 - The heavier one falls first

35. The part used for exchange of nutrients and wastes between the mother and the foetus is called

- placenta
- umbilical cord
- uterine wall
- amniotic fluid

36. The method of separating mixtures where size is least important is

- sieving
- picking
- magnetism
- filtration

37. Which one of the following changes takes place during adolescence in boys only?

- Release of sex cells
- Chest and shoulder becomes broader
- Fast body growth
- Growth of pubic hair

38. Study the food chain below and answer the question.

Grass → grasshopper → frogs → snakes

What will NOT happen when frogs are eliminated from the food chain?

- Grass will increase
- Snake will decrease
- Grasshoppers will increase
- Grass will decrease

39. A card with the word KASUKU written on it was placed in front of a mirror. How will it appear in the mirror?

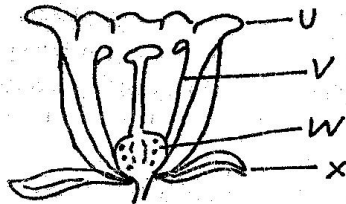
- UKUZAK
- KASUKU
- KAKUZA
- SUKUXA

40. Which one of the following is NOT an excretory organ?

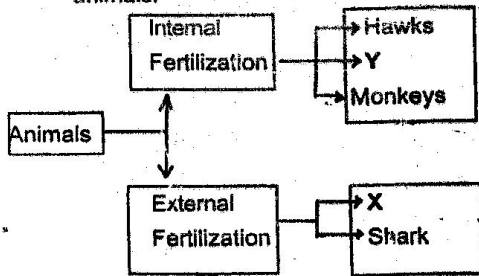
- Skin
- Kidney
- Lungs
- Rectum

41. Which one of the following consists of magnetic materials only? _____
- A. Zinc, cobalt, aluminium
 B. Aluminium, copper, tin
 C. Cobalt, alnico, chromium
 D. Copper, chromium, zinc
42. Three of the following characteristics enable hydrophytes to float in water. Which one does NOT?
- A. Large flat leaves
 B. Presence of air sacs
 C. Thick waxy cuticle
 D. Flexible hair - like stems

Use the diagram below to answer question 43



43. Which part does not die even the fruit is formed?
- A. W B. X
 C. U D. V
44. Which one of the following is not drug misuse? _____
- A. Buying medicine without doctors prescription
 B. Taking medicine when one is not sick
 C. Using excessive amounts than prescribed
 D. Taking sleeping pills in order to relax
45. The chart below shows fertilization in animals.



X and Y can be correctly matched with:

- | X | Y |
|------------|-----------|
| A. Frog | Crocodile |
| B. Fish | Man |
| C. Rabbit | Cow |
| D. Sunbird | Fish |

46. Which one of the following groups of methods can be used to separate solid mixtures ONLY? _____
- A. Sieving, picking, winnowing
 B. Picking, use of magnet, decanting
 C. Winnowing, sieving, filtration
 D. Use of magnet, filtration, decanting
47. The function of fibre in the human diet is to: _____
- A. Preventing constipation
 B. provide the body with nutrients
 C. Transport digested food
 D. Help in digestion
48. Which one of the following is NOT a communicable disease? _____
- A. whooping cough B. tetanus
 C. tuberculosis D. measles
49. Which one of the following is NOT a correct statement about reproduction? _____
- A. Menstruation stops during pregnancy
 B. The blood of the mother does not mix with that of the foetus
 C. The zygote gets implanted in the wall of uterus
 D. Fertilization take place in uterus
50. Which one of the following plants is green and non - flowering? _____
- A. mould B. moss
 C. sisal D. onion