

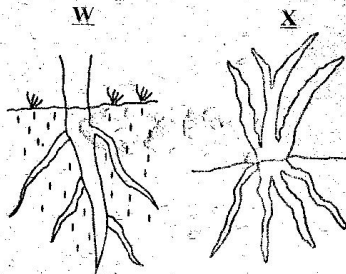
CLASS 7 MID TERM 3 2021

SCIENCE

1. Which one of the following statements is true about arteries?
- A. All arteries carry deoxygenated blood.
 - B. Arteries have valves to prevent back flow of blood.
 - C. Arteries have thick walls.
 - D. All arteries carry blood to the heart.

2. Which one of the following fertilizers does not contain nitrogen?
- A. Single superphosphate.
 - B. Urea
 - C. Sulphate of Ammonia.
 - D. Blood meal.

3. The diagrams below show root systems of certain plants.



Which of the following sets of plants are most likely represented by letter W and X?

- | | |
|---------------|----------|
| <u>W</u> | <u>X</u> |
| A. Peas | Wheat |
| B. Wheat | Beans |
| C. Groundnuts | Cow peas |
| D. Sorghum | Cabbage |
4. Which one of the following units cannot be used for measuring the mass of an object?
- A. Newton
 - B. Tonne
 - C. Gram
 - D. Kilogram

5. The main reason why farmers apply mulch is to
- A. control weed.
 - B. control soil erosion.
 - C. improve soil fertility.
 - D. conserve soil moisture.

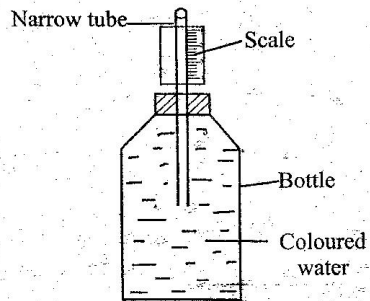
6. Which one of the following animal parasites is not found in the liver?
- A. Roundworms
 - B. Liverflukes
 - C. Tapeworms
 - D. Hookworms

7. When breathing out all of the following take place except one. Which one is it?
- A. Ribs move inwards.
 - B. Air is expelled.
 - C. Air moves into the lungs.
 - D. Chest cavity reduces in volume.

8. Which one of the following pairs of crop pests can be controlled by pruning the plant?
- A. Cutworm and aphids.
 - B. Army worms and weevil.
 - C. Weaver birds and mice.
 - D. White ants and cutworm.

9. Which one of the following is a source of electricity?
- A. Dam
 - B. Dry cell
 - C. Biogas plant
 - D. Torch

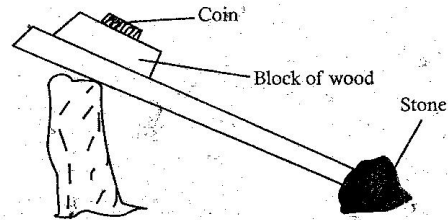
10. The diagram below represents a weather instrument made by std. 5 pupils.



The instrument did not show the temperature because of

- A. coloured water.
 - B. glass bottle.
 - C. labelling of the scale
 - D. narrow tube.
11. The following are characteristics of sandy soil **except**
- A. mixes well with cement.
 - B. has the lower capillarity.
 - C. drains very little water.
 - D. has coarse texture.
12. Which one of the following materials is magnetic?
- A. Iron
 - B. Copper
 - C. Aluminium
 - D. Rubber
13. Fish, reptiles and amphibians have one thing in common in that
- A. they are invertebrates.
 - B. their bodies are covered with scales.
 - C. they lay eggs fertilized internally.
 - D. they are cold blooded.

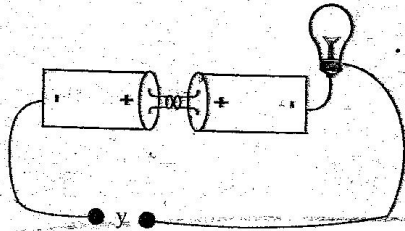
14. The diagram below shows a set up used to investigate force.



The set up was used to investigate

- A. inertia of motion.
 - B. inertia of pressure.
 - C. inertia of gravity.
 - D. inertia of rest.
15. Sheet erosion can **best** be controlled by
- A. terracing
 - B. cover cropping
 - C. tree planting
 - D. building gabions
16. Which of the following pollutes river water **mostly**?
- A. Untreated sewage.
 - B. Acid rain.
 - C. Oil spillage.
 - D. Floods.

17. The diagram below shows a set-up that was used to investigate good and poor conductors of electricity.



The material used to connect point y in

- A. plastic comb.
 B. piece of masking tape.
 C. shilling coin.
 D. rubber band.
18. The following are effects of taking drugs:
- i) Violence.
 - ii) Addiction.
 - iii) Impaired judgement.
 - iv) Truancy.
 - v) Drug induced accidents.
- Which of these are **not** health effects of taking drugs?
- A. (i), (ii), (iii)
 B. (i), (iv), (v)
 C. (i), (iii), (v)
 D. (ii), (iii)
19. The method of grazing that would require the smallest piece of land to practise is
- A. stall feeding
 B. herding
 C. tethering
 D. paddocking

20. The temperature at which a substance condenses is the same temperature at which it
- A. solidifies
 B. freezes
 C. evaporates
 D. melts

21. Which one of the following pairs consists **only** of living components of the environment?

- A. Plants and animals.
 B. Soil and animals.
 C. Animals and air.
 D. Water and plants.

22. Which one of the following is **true** about cumulus clouds?

- A. They are dark grey in colour.
 B. They often bring rain.
 C. They are found high in the sky.
 D. They are found low in the sky.

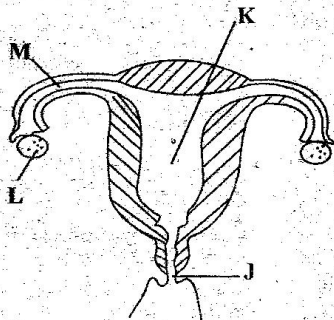
23. Which one of the following is a safety measure against lightning when it is raining?

- A. Avoid overloading the socket.
 B. Wearing rubber shoes.
 C. Leaning against walls.
 D. Walking on an open areas.

24. The purpose of salt in food preservation is to

- A. remove air.
 B. add flavour.
 C. lower the temperature.
 D. dehydrate food.

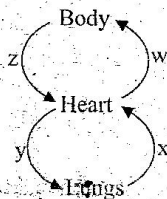
25. The diagram below represents the reproductive system in the female human body.



Ovulation takes place in the part labelled

- A. J
 B. K
 C. L
 D. M
26. Which one of the following drugs has similar effects to miraa when abused?
 A. Excessive alcohol
 B. Heroin
 C. Mandrax
 D. Tobacco
27. Which one of the following components of tobacco leads to cigarette addiction?
 A. Tar
 B. Nicotine
 C. Caffeine
 D. Carbon monoxide

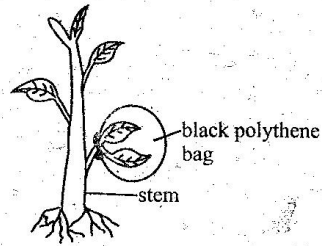
28. The diagram below shows an illustration of the human circulatory system.



Which pair of blood vessels carries oxygenated blood?

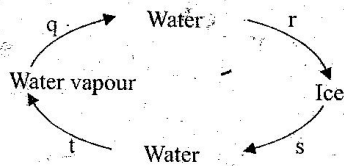
- A. Y and Z
 B. X and W
 C. X and Y
 D. Z and W
29. Which of the following methods of controlling weeds is the **best** to be used in a maize plantation?
 A. Slashing
 B. Digging them out
 C. Uprooting
 D. Mulching
30. Which one of the following physical changes occurs **only** in girls during adolescence?
 A. Body weight and height.
 B. Chest broadens.
 C. Pimples may appear on the face.
 D. Hips broaden.
31. Which one of the following is made up of a pair of storage pests?
 A. Termites and rats.
 B. Mice and aphids.
 C. Aphids and cutworms.
 D. Stalkborer and white ants.
32. Which of the following fertilizers will take the longest duration to release nutrients to plants?
 A. Green manure.
 B. Farmyard manure.
 C. Compost manure.
 D. Organic mulch.

33. Standard five pupils set-up the experiment below.



What were they investigating?

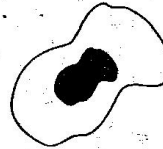
- A. Photosynthesis.
 - B. Absorption.
 - C. Transpiration.
 - D. Respiration.
34. Which of the following is **not** a problem related to teeth?
- A. Bleeding gum.
 - B. Dental floss.
 - C. Tooth decay.
 - D. Tooth cavities.
35. The diagram below shows changes of states of matter.



Which two processes need absorption of heat from the environment?

- A. q and t
- B. q and r
- C. s and t
- D. r and s

36. What is the function of the blood component drawn below?



- A. Helps in blood clotting.
- B. Transporting oxygen.
- C. Fighting germs.
- D. Transporting carbon dioxide.

37. Sound travels **best** through

- A. liquids
- B. gases
- C. vacuum
- D. solids

38. Which of the following pairs of diseases are usually immunised at nine months?

- A. Measles and yellow fever.
- B. Tetanus and whooping cough.
- C. Polio and diphtheria.
- D. Pertussis and tuberculosis.

39. Why is a rain gauge raised 30cm above the ground?

- A. To reduce the rate of evaporation.
- B. For easy viewing.
- C. To prevent water from splashing.
- D. To prevent water from evaporating.

40. Which one of the following livestock parasites **cannot** be controlled by rotational grazing?

- A. Ticks
- B. Tsetse flies.
- C. Roundworms.
- D. Liverflukes.

41. Which one of the following weather instruments does **not** use the principle of matter occupies space?
- Rain gauge
 - Air thermometer
 - Windsock
 - Windvane
42. Lucerne and molasses supply animals with
- vitamins and proteins.
 - proteins and energy.
 - calcium and iron.
 - energy and vitamin.
43. The gravitational pull on an object is measured in
- kilograms
 - tonnes
 - metres
 - newtons
44. The component of air that makes up to 78% of air by volume is used in
- fire extinguishers.
 - electric bulbs
 - making proteins
 - rusting
45. A surface made of aluminum floats on water while a piece of aluminum wire sinks. This happens due to the difference in
- volume
 - mass
 - material
 - shape
46. Which one of the following is **not** a use of poor conductors of heat?
- Making handles of utensils.
 - Making solar water heaters.
 - Making clothes.
 - Making cooking stick.
47. Which one of the following groups consists of only foodstuffs that are used for providing the body with energy?
- Eggs, milk, peas.
 - Maize, groundnuts, peas.
 - Oranges, meat, rice.
 - Wheat, maize, Irish potatoes.
48. In which one of the following activities is water **not** used for recreation?
- Making fountains.
 - Swimming.
 - Boat racing.
 - Surfing.
49. The following are examples of special sounds **except**
- hooting of a car.
 - baby crying.
 - screaming.
 - ringing of a bell.
50. Which one of the following drugs is **most** commonly abused in Kenya?
- Khat
 - Tobacco
 - Mandrax
 - Alcohol