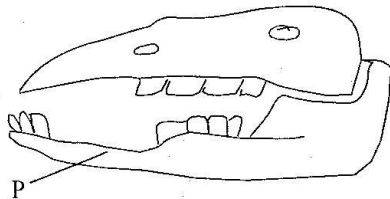


CLASS 8 MID TERM 3 DECEMBER 2021
SCIENCE

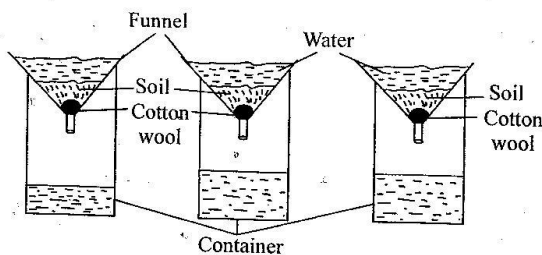
1. Which one of the following pairs **cannot** be separated by use of magnet?
A. Copper and iron filings.
B. Iron filings and sand particles.
C. Steel and salt.
D. Aluminium and copper.
2. The common characteristic shared by electric energy and sound energy is that they
A. do not travel well through liquid.
B. require a medium for transmission.
C. can be transmitted through a vacuum.
D. are transmitted fastest through gases.
3. Soles have treads **mainly** to
A. increase the force that opposes motion.
B. make them attractive.
C. make them last longer.
D. reduce the force of friction.
4. In an experiment to investigate factors affecting floating and sinking, pupils carried out the following activities
(i) *Placed a bottle top on water*
(ii) *Made the same bottle top into a ball and placed it on water.*
Which one of the following factors were the pupils investigating?
A. Size. B. Shape.
C. Mass. D. Type of material.
5. The diagram below shows the type of arrangement of teeth in a certain mammal



- The part marked **P** helps the animal to
- A. grind the vegetable material
 - B. prevent it from biting the tongue
 - C. turn the vegetable material in the mouth
 - D. hold the plant material tightly.

6. The following are some uses of some components of air
(i) *Germination*
(ii) *Preservation of soft drinks*
(iii) *Electric bulbs*
(iv) *Burning*
Which two uses are for the component that makes up 21% of air?
A. i and iii B. i and iv
C. ii and iii D. ii and iv
7. The following are some characteristics of plants:
(i) *Thin cuticle*
(ii) *Silvery hairs*
(iii) *Flexible stems*
(iv) *More stomata on lower leaf surface*
(v) *Air sacs*
Which pair of characteristics is for hydrophytes?
A. i and ii B. ii and iii
C. ii and iv D. i and v
8. During thunderstorms, pupils were observed
(i) *Sheltering under the verandah*
(ii) *Playing on the football pitch*
(iii) *Wearing red jacket in a classroom*
(iv) *Lying on the floor in the classroom*
In which pair of observations were the pupils more likely to be struck by lightning?
A. i and ii B. ii and iii
C. iii and iv D. ii and iv
9. Which one of the following levers when in use has the position of the effort between the load and the fulcrum?
A. Wheelbarrow. B. Claw hammer.
C. Crowbar. D. Spade.
10. Which of the following are both modern and traditional methods of preserving food?
A. Canning and use of honey.
B. Salting and drying.
C. Use of low temperatures and drying.
D. Smoking and use of low temperatures.
11. Which one of the following is an effect of crop diseases?
A. Stunted growth. B. Reduced yield.
C. Wilting. D. Spots and streaks.

12. The set up below was used to investigate a certain property of soil



Which of the following conditions does **not** need to be the same?

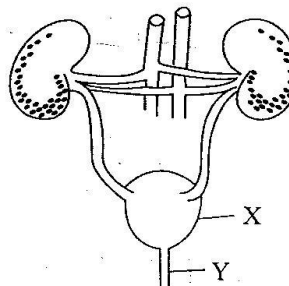
- A. Duration.
 B. Size of the soil particles.
 C. Amount of water.
 D. Amount of soil.
13. Which one of the following does not cause soil pollution?
 A. Dumping of industrial wastes.
 B. Pollution caused by rotting vegetables.
 C. Excessive use of farm chemicals.
 D. Spilled oil.
14. Which one of the following is an advantage of hard water?
 A. Blocking hot water pipes.
 B. Discolours clothes
 C. Does not lather easily with soap.
 D. Has a good taste.
15. Which one of the following birds is correctly matched with its beak adaptation
- | Bird | Beak adaptation |
|------------------|-------------------------------------|
| A. Flesh eater | - slender, long and serrated beak |
| B. Nectar feeder | - serrated, strong and curved beak. |
| C. Grain feeder | - thick, strong and conical beak. |
| D. Filter feeder | - thick, flat and conical beak. |
16. Which one of the following is **not** a way of using energy sparingly?
 A. Using biogas for cooking.
 B. Avoid opening the fridge all the time.
 C. Using public transport.
 D. Switching off light that is not needed.
17. Which one of the following is **not** a practice for maintaining simple tool?
 A. Proper storage.
 B. Using them for the right purpose.
 C. Sharpening all the tools.
 D. Cleaning tools after use.

18. Which one of the following pairs of activities requires streamlining of the body?
 A. Jumping and walking.
 B. Flying and walking.
 C. Swimming and flying.
 D. Walking and swimming.

19. The following are characteristics of flowers.
 (i) Sweet scent
 (ii) Small in size
 (iii) Produces a lot of powdery pollen grains
 (iv) Sticky stigma

Which two characteristics are for wind pollinated flowers?

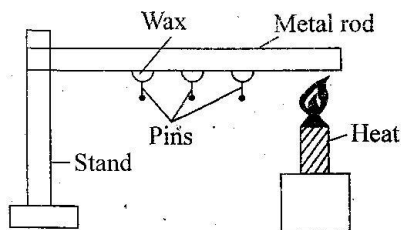
- A. i and ii
 B. ii and iii
 C. iii and iv
 D. i and iv
20. The following are functions of amniotic fluid **except**
 A. it keeps the foetus warm
 B. it keeps the foetus moist
 C. it allows the foetus to move freely.
 D. it enables the supply of food and oxygen to the foetus.
21. The following are adaptive features in xerophytes. Which one helps in reducing the rate of transpiration?
 A. Shedding of leaves.
 B. Deep root system.
 C. Shiny prickly hair on the leaves.
 D. Succulent stems.
22. The soil that has the best drainage also
 A. has few air spaces
 B. has large air spaces
 C. has the best water retention ability
 D. cracks when dry.
23. The diagram below shows parts of the human excretory system



The parts X and Y respectively are

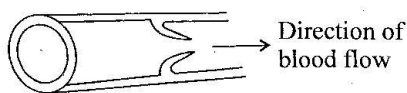
- | X | Y |
|------------|---------|
| A. kidney | urethra |
| B. bladder | ureter |
| C. kidney | ureter |
| D. bladder | urethra |

24. The diagram below represents a set-up that can be used to demonstrate a certain aspect of heat



The aspect demonstrated is that

- A. solids conduct heat
 B. metals absorb heat
 C. solids melt when heated
 D. metals expand when heated.
25. A breast feeding mother should feed on a diet rich in calcium and phosphorus in order to
- A. enable her to regain strength.
 B. improve the immunity of the baby.
 C. strengthen the bones of the baby.
 D. replace blood lost during birth
26. Which of the following groups of planets are in the correct order in terms of distance from the sun?
- A. Earth, jupiter, saturn, mars.
 B. Venus, mars, earth, saturn
 C. Mars, neptune, uranus, jupiter.
 D. Venus, earth, mars, jupiter.
27. The diagram below shows a blood vessel

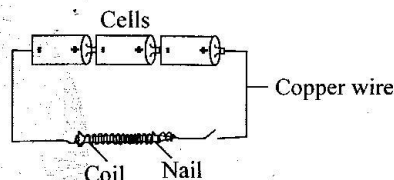


Which statement is **false** about the above blood vessel?

- A. It transports oxygenated blood only.
 B. Blood flows at low pressure.
 C. It transports blood from other body organs to the heart.
 D. It has a thin and inelastic wall.
28. Which one of the following diseases cannot be prevented by maintaining proper hygiene?
- A. Typhoid. B. Malaria.
 C. Bilharzia. D. Cholera.

29. The following methods conserve both soil and water **except**

- A. mulching. B. cover crops.
 C. terracing. D. gabions.
30. A child who appears old with a wrinkled face is also likely to
- A. have pale eyes
 B. cry often
 C. have swollen abdomen
 D. have bow legs.
31. Which among the following is **not** an effect of ill-health in livestock?
- A. Lower yields.
 B. Reduced quality products.
 C. Rough coat.
 D. Transmission of diseases.
32. The diagram below represents a circuit that can be used to make a temporary magnet

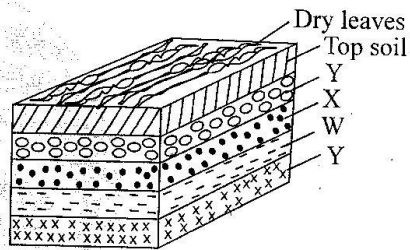


The strength of the magnet **cannot** be increased by

- A. reducing the number of cells.
 B. using a car battery.
 C. increasing the number of cells.
 D. increasing the number of coils.
33. Which one of the following statements describes a human incisor tooth?
- A. Rough surface with one root.
 B. Pointed with one root.
 C. Rough surface with two roots.
 D. Chisel shaped with one root.
34. In which one of the following is water used sparingly?
- A. Using domestic waste water to clean toilets.
 B. Using harvested rain water for animals to drink.
 C. Repairing broken taps and pipes.
 D. Recycling waste water from factories.
35. The following are signs and symptoms of a certain sexually transmitted infection
- (i) Abdominal pains
 (ii) Blocking of urethra
 (iii) Pain when urinating
- The STI described above is likely to be
- A. chancroid. B. gonorrhoea.
 C. syphilis. D. HIV/AIDS.

36. Which one of the following components of the environment is conserved when people use vehicles with well maintained engines?
 A. Water. B. Air.
 C. Plants. D. Animals.
37. The clouds that have flat bottom are **not** likely to
 A. be a sign of fine weather
 B. be found high in the sky
 C. be cotton-wool shaped
 D. be dark grey in colour.
38. Which one of the following consists of group of food that **mainly** contain fats?
 A. Coconut, groundnuts, avocado.
 B. Avocado, butternuts, maize.
 C. Groundnuts, simsim, peas.
 D. Coconuts, beans, sunflower.
39. Which of these is **not** a physical change during adolescent?
 A. Enlargement of breasts.
 B. Moodiness.
 C. Growth of beard.
 D. Broadening of shoulders.
40. Which one of the following parasite attack all the domestic animals?
 A. Ticks. B. Mites.
 C. Tsetse flies. D. Lice.
41. The following are effects of abusing drugs
 (i) Drug induced accidents
 (ii) Lack of concentration
 (iii) Truancy
 (iv) Withdrawal symptoms
 (v) Dropping out of school
 Which ones are social effects of drug abuse?
 A. i, iii, v B. iii, iv, v
 C. i, ii, iii D. ii, iii, iv
42. The force of gravity acting on an object is its
 A. mass B. weight
 C. volume D. size.
43. Which one of the following is **not** a source of useful electricity?
 A. Hydroelectric dam.
 B. Geothermal well.
 C. Solar panel.
 D. Lightning.
44. In which one of the following activities is water used for recreation?
 A. Making fountains.
 B. Cooking.
 C. Surfing.
 D. Mixing chemicals.

45. Which one of the following statements is correct about a windsock? A windsock
 A. points to the direction from which wind blows.
 B. is open at one end.
 C. should be placed in the open field.
 D. measures the direction of wind only.
46. Which one of the following drugs has similar effects to tobacco when abused?
 A. Khat.
 B. Mandrax.
 C. Excess alcohol.
 D. Herion.
47. The diagram below shows a compost heap.



- Which layer feeds decomposers?
 A. Y B. X
 C. W D. V
48. Which one of the following pairs consists of renewable sources of energy?
 A. Firewood and kerosene.
 B. Petrol and charcoal.
 C. Diesel and coal.
 D. Charcoal and biogas.
49. Which one of the following plants has separate male and female flowers?
 A. Sorghum.
 B. Sunflower.
 C. Maize.
 D. Oranges.
50. Which one of the following is the function of the rectum?
 A. Stores undigested matter.
 B. Absorbs water and mineral salts.
 C. Absorbs digested food.
 D. Digests fibre.