

CLASS 6 MID TERM 3 DECEMBER 2021
SCIENCE

1. In which of the following parts of the digestive system is water **mainly** absorbed?
- A. Large intestine.
 - B. Small intestine.
 - C. Stomach.
 - D. Mouth.

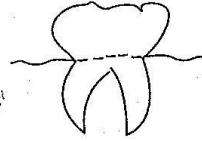
2. The diagram below shows a certain type of crop



It falls under the group of

- A. fibre crops.
 - B. beverage crops.
 - C. cereals crops.
 - D. oil crops.
3. The following are ways of HIV transmission **except** one. Which one?
- A. Sexual intercourse.
 - B. Sharing food with infected person.
 - C. Sharing sharp cutting tools.
 - D. Unscreened blood transfusion.
4. Which of the following is a use of water in the industry?
- A. Fishing.
 - B. Swimming.
 - C. Skiing.
 - D. Making fountains.
5. In which of the following parts of the breathing system is air cleaned?
- A. Nose and lungs.
 - B. Lungs and trachea.
 - C. Trachea and bronchus.
 - D. Nose and trachea.

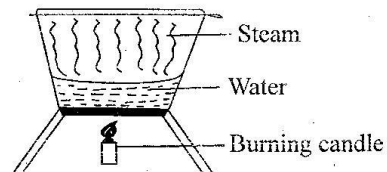
6. Which statement is **not** true about the type of tooth drawn below?



- A. Is the last to shed off.
 - B. Is used for chewing food.
 - C. Is the last to grow.
 - D. Are eight in total.
7. Identify the type of weed drawn below



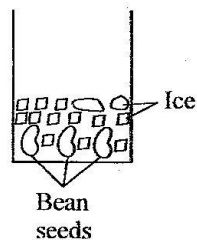
- A. Pigweed.
 - B. Blackjack.
 - C. Wandering jew.
 - D. Oxalis.
8. Pollution from sound causes all the following **except**
- A. irritation.
 - B. damaging the eardrum.
 - C. blindness.
 - D. deafness.
9. The diagram below illustrates a certain experiment to show effect of heat on matter



Which effect does it show?

- A. Condensation.
- B. Freezing.
- C. Evaporation.
- D. Melting.

10. The following are physical changes that occur in adolescents. Which one occurs only in adolescent girls?
- Wet dreams.
 - Increase in weight and height.
 - Enlargement of hips.
 - Broadening of chest.
11. Which of the following is the fifth planet in the solar system?
- Mars.
 - Saturn.
 - Jupiter.
 - Earth.
12. Which of the following is a fodder crop?
- Napier grass.
 - Star grass.
 - Sunflower seeds.
 - Salt lick.
13. The following are waterborne diseases except
- typhoid.
 - malaria.
 - bilharzia.
 - cholera.
14. Which of the following is **not** a rotational method of grazing?
- Herding.
 - Tethering.
 - Paddocking.
 - Strip grazing.
15. Std. 6 pupils set up the experiment to investigate a certain condition necessary for germination



They were most likely trying to investigate whether

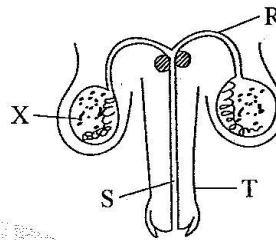
- water is required for germination.
- oxygen is needed for germination.
- light is needed for germination.
- warmth is required for germination.

16. The following are signs and symptoms of a certain nutritional deficiency disease:

- Headache
- Tiredness
- White finger nails
- Body weakness

Which disease has the above signs and symptoms?

- Marasmus.
 - Kwashiorkor.
 - Anaemia.
 - Rickets.
17. The diagram below shows the male reproductive system



Which of the labelled parts represents the urethra?

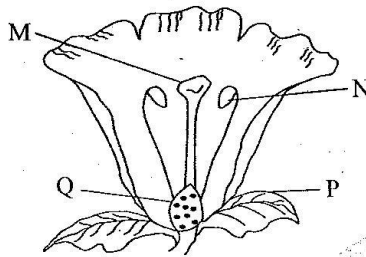
- X
 - S
 - T
 - R
18. Which statement is true about liquids?
- Have definite shape.
 - Do not occupy space.
 - Have indefinite mass.
 - Have definite volume.
19. Convection is the transfer of heat through
- liquids only.
 - liquids and solids.
 - gases only.
 - liquids and gases.
20. Loudness or softness of sound is called
- volume.
 - noise.
 - echo.
 - pitch.
21. Which of the following food provides the body with vitamins?
- Peas.
 - Milk.
 - Kales.
 - Cassava.
22. Which of the following materials is a good conductor of heat?
- Water.
 - Wire.
 - Wood.
 - String.

23. The following are characteristics of a group of animals

- (i) They breathe through lungs
- (ii) They lay eggs fertilized internally
- (iii) They are warm blooded
- (iv) They have claws on their feet

Which group of animals is described above?

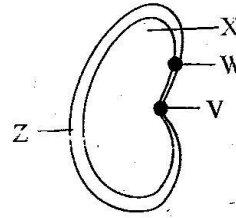
- A. Birds.
 - B. Mammals.
 - C. Amphibians.
 - D. Reptiles.
24. The diagram below shows parts of a flower



In which of the labelled parts are pollen grains produced?

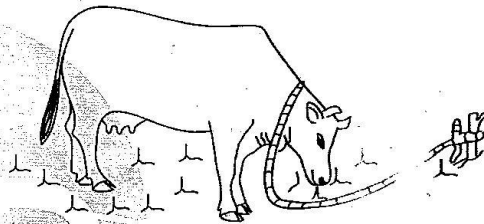
- A. N
 - B. M
 - C. P
 - D. Q
25. The type of soil that cracks when dry also
- A. has large particles.
 - B. is good for farming.
 - C. has smooth texture.
 - D. mixes easily with cement.
26. The following are all invertebrates **except**
- A. mite.
 - B. crab.
 - C. cricket.
 - D. gecko.
27. Which type of soil allows water to rise easily up the soil?
- A. Sand.
 - B. Loam.
 - C. Silt.
 - D. Clay.
28. In which stage of HIV infection does the patient test negative and show no signs?
- A. Incubation stage.
 - B. Window stage.
 - C. Full blown stage.
 - D. Symptomatic stage.

29. The diagram below shows a type of seed



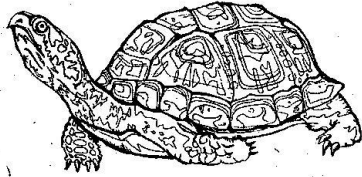
It stores food in the part labelled

- A. Z
 - B. X
 - C. W
 - D. V
30. In which part of the female reproductive system does development of the embryo occur?
- A. Oviduct.
 - B. Ovary.
 - C. Vagina.
 - D. Uterus.
31. Identify the type of grazing shown below



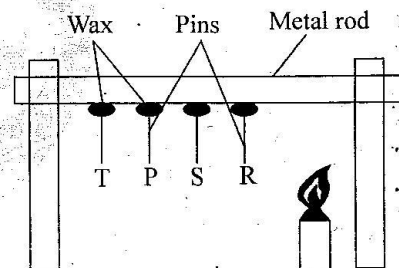
- A. Herding.
 - B. Tethering.
 - C. Strip grazing.
 - D. Zero grazing.
32. Which plant below has fibrous roots?
- A. Bean.
 - B. Cabbage.
 - C. Peas.
 - D. Rice.
33. Which of the following is a sign of malaria?
- A. Prolonged dry cough.
 - B. Pain in the chest.
 - C. Loss of weight.
 - D. Pain in joints.
34. The fourth oral polio vaccine is given to an infant at the age of
- A. nine months.
 - B. birth.
 - C. ten weeks.
 - D. fourteen weeks.
35. Which one of the following is **not** a sign of gum disease?
- A. Swollen gums.
 - B. Red gums.
 - C. Bleeding gums.
 - D. Bad smell.

36. In AIDS letter S stands for syndrome. It means
 A. lacking. B. ability to protect.
 C. groups of signs. D. immunity.
37. The animal drawn below is an example of



- A. reptile. B. amphibian.
 C. mammal. D. fish.
38. Which of the following is **not** a leguminous crop?
 A. Groundnut. B. Green gram.
 C. Soya beans. D. Tomato.
39. Which one of the following is **not** the reason for carrying out HIV testing?
 A. To spread the disease.
 B. To overcome fear.
 C. To change behaviour.
 D. To plan one's future.
40. Which one of the following farm animals provides dairy and mutton?
 A. Sheep. B. Cattle.
 C. Goat. D. Cow.
41. Which statement is **true** about nimbus clouds?
 A. Have flat bottom.
 B. Look like mountains.
 C. Are white in colour.
 D. Indicate fine weather.
42. Std. 5 pupils collected the materials below to make a certain weather instrument;
 (i) Glass bottle
 (ii) Inner tube of a pen
 (iii) Cork
 (iv) Strong manila paper
 (v) Sellotape
 Which instrument were they likely to make?
 A. Air thermometer.
 B. Windsock.
 C. Liquid thermometer.
 D. Rain gauge.

43. Which of the following is **not** a source of heat?
 A. Gas. B. Electricity.
 C. Firefly. D. Sun.
44. Std. 4 pupils put a small nail in water and found out that it sank. They then put another big metal in water and realized that it sank. They were trying to investigate whether
 A. type of material affects sinking and floating.
 B. size affects sinking and floating.
 C. shape affects sinking and floating.
 D. weight affects sinking and floating.
45. In which part of the digestive does mechanical breakdown of food take place?
 A. Oesophagus. B. Mouth.
 C. Stomach. D. Small intestine.
46. Which of the following plants is non-green and does not produce flowers?
 A. Moss. B. Cypress.
 C. Mould. D. Banana.
47. Std. 5 pupils did an experiment shown below



- The pins fell down as a result of
 A. expansion. B. radiation.
 C. conduction. D. convection.
48. Which of the following will expand most?
 A. Metal. B. Water.
 C. Ice. D. Air.
49. The process through which ice changes into water is known as
 A. freezing. B. melting.
 C. condensation. D. evaporation.
50. Which nutritional deficiency disease can be prevented by eating enough balanced diet?
 A. Kwashiorkor. B. Anaemia.
 C. Marasmus. D. Rickets.