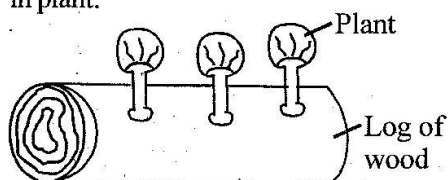


# CLASS 7 END TERM 3 DECEMBER 2021

## SCIENCE

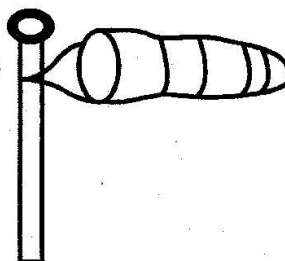
- Which one of the following factors does **not** affect sinking and floating of an object?
  - Size
  - Type of materials
  - Shape
  - Weight
- Which of the following should be avoided during heavy rainfall accompanied by thunderstorms?
  - Wearing a red short.
  - Switching on electricity.
  - Leaning on a wall.
  - Sitting next to a fire.
- The diagram below shows interdependence in plant.



The above shows that plants depend on other plants for

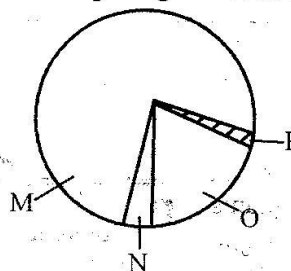
- support
  - shade
  - warmth
  - habitat
- The quantity of matter in a substance cannot be measured in
    - kilograms
    - newton
    - gramme
    - tonne
  - Which one of the following pairs of livestock parasites can be controlled through deworming?
    - Ticks and mites
    - Mites and lice
    - Roundworms and hookworm
    - Hookworms and fleas
  - Which of the following components of the environment directly support plant life?
    - Soil
    - Animal
    - Light
    - Air
  - When preparing a compost heap, bacteria are introduced by
    - adding kitchen refuse
    - adding top soil
    - sprinkling water
    - turning the materials often

- A pupil constructed a weather instrument as shown.



Which one of the following is the reason why the weather instrument did not work?

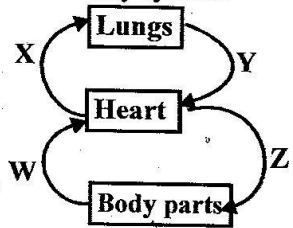
- The opening of the sock was very big
  - The stand was made up of wood
  - The small end of the sock was not open
  - The sock was painted black and white
- The following are health effects of drug abuse. Which one is **not**?
    - Rape
    - Addiction
    - Impaired judgment
    - Poor health
  - During fertilization in flowers, a pollen tube is formed in the
    - stigma
    - filament
    - ovary
    - style
  - Below is a pie chart representing the composition of different gases in air. Which portion of the pie chart represents the gas which plant give out during the day?



- M
- N
- O
- P

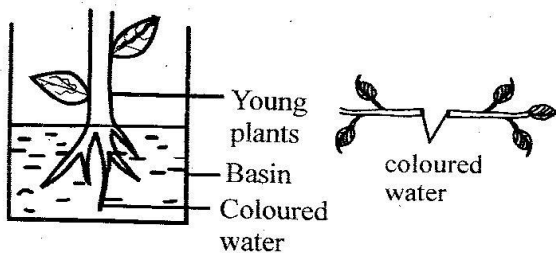
- A child who cries often is also likely to
  - appear old with a wrinkled face
  - have swollen abdomen
  - have bow legs
  - faint often

13. The diagram below represent the blood circulatory system.



The blood vessel marked Y

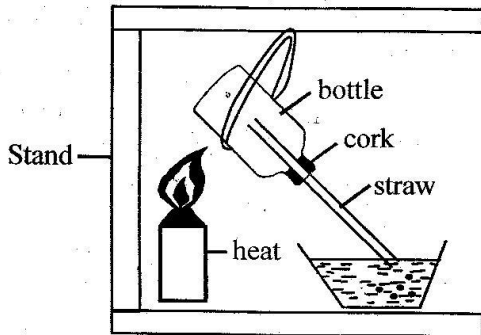
- A. carries deoxygenated blood  
 B. carries blood which is at low pressure  
 C. has pulse  
 D. has an elastic wall
14. Which one of the following is **not** a way of controlling human intestinal worms?  
 A. Proper sanitation  
 B. Proper diet  
 C. Deworming  
 D. Cooking food properly
15. Which one of the following drug, causes lack of sleep when abused?  
 A. Mandrax                      B. Heroin  
 C. Tobacco                      D. Khat
16. The clouds that are mountainous in shape are also likely to  
 A. be dark grey in colours  
 B. be a sign of fine weather  
 C. have a flat bottom  
 D. be found high in the sky
17. Which one of the following involves using water sparingly?  
 A. Mulching  
 B. Repairing leaking pipes  
 C. Recycling water  
 D. Harvesting rain water
18. Some pupils from a certain school uprooted a young plant and dipped it in coloured water as shown below.



After some hours they cut across the stem and made their observation. What were they investigating?

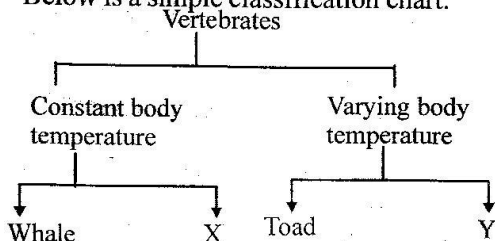
- A. Transportation of water and mineral salts  
 B. Photosynthesis in plants  
 C. Absorption of water and mineral salts  
 D. Food storage in plants
19. Which one of the following is **not** a source of electricity?  
 A. Car battery  
 B. Wind driven turbine  
 C. A dam  
 D. Solar panel
20. The function of white blood cells is to  
 A. transport digested food  
 B. help in clotting  
 C. carry oxygen  
 D. fight germs
21. In which one of the following stages of HIV infection is one positive as well as with signs and symptoms?  
 A. Incubation                      B. Symptomatic  
 C. Asymptomatic                      D. Window
22. Which one of the following pairs of weather instruments can be used to measure the same aspect of weather?  
 A. Windsock and windvane  
 B. Air thermometer and raingauge  
 C. Windsock and liquid thermometer  
 D. Windvane and raingauge
23. Which one of the following is **not** an effect of pests on crops?  
 A. Lower yields  
 B. Transmission of diseases to crops  
 C. Increased quality of produce  
 D. Cause diseases to consumers
24. Which one of the following materials is **not** a good conductor of electricity?  
 A. Iron                      B. Graphite  
 C. Copper                      D. Glass
25. Which one of the following is an industrial use of water?  
 A. Surfing  
 B. Making fountains  
 C. Cleaning farm implements  
 D. Boat racing
26. Which one of the following methods of food preservation are both traditional and modern?  
 A. Use of honey and drying  
 B. Drying and use of low temperature  
 C. Use of low temperature and salting  
 D. Salting and drying

27. The diagram below shows a set-up that was used to demonstrate a certain property of matter.



Which one of the following was **not** observed by the pupils?

- A. Bubbles appear in the water  
 B. Air expands when heated  
 C. The level of water drops in the straw  
 D. When the candle was removed water level in the basin dropped
28. The soil that has cracks when dry
- A. has low water retention ability  
 B. is suitable for modelling  
 C. has large air spaces  
 D. has coarse texture
29. Which of the following statements is **not** correct?
- A. Premolars and molars have cusps  
 B. Canines are used for chewing  
 C. Premolars are the last to be shed off  
 D. Deciduous teeth are replaced by permanent teeth
30. Below is a simple classification chart.



Which two animals can correctly fit in X and Y respectively?

- A. Platypus and Newt  
 B. Cheetah and hawk  
 C. Bat and duck  
 D. Shark and chameleon
31. Young people can greatly promote campaigns against the spread of HIV among themselves by
- A. using condoms  
 B. having one sexual partner

- C. being faithful  
 D. abstaining

32. A child had the following signs and symptoms

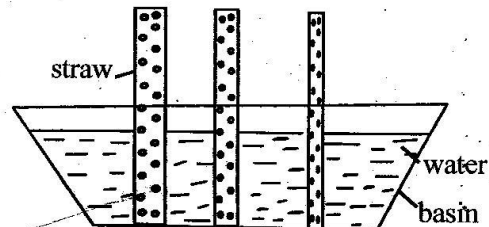
(i) *cracking skin*

(ii) *sores at the corner of the mouth*

(iii) *pot belly*

Which one of the following group of food is suitable to correct the condition?

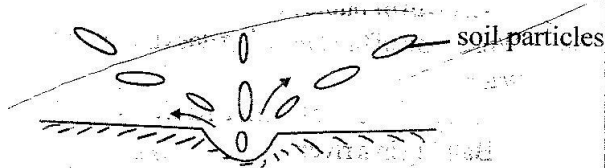
- A. Rice, chapati, ugali  
 B. Irish potato, ugali, chapati  
 C. Beans, fish, milk  
 D. Chapati, chips, soda
33. Which one of the following is the **best** way of controlling weeds in a large farm?
- A. Digging them out  
 B. Spraying them  
 C. Uprooting  
 D. Slashing
34. Study the following diagram on capillarity in different soils



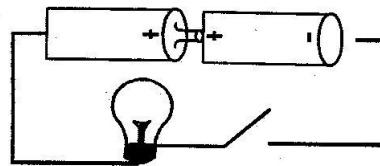
The mistake made while carrying out the experiment was

- A. using straws of different sizes  
 B. using one basin for the straws  
 C. using equal amount of soil  
 D. using different types of soils
35. Which one of the following is a sign of adolescence in both girls and boys?
- A. Growth of beards  
 B. Broadening of hips  
 C. Broadening of shoulder  
 D. Growth of pubic hair
36. Which one of the following does **not** pollute water?
- A. Excessive use of farm chemicals  
 B. Bathing in a river  
 C. Planting trees near a river bank  
 D. Spillage of oil into water

37. Tapeworms can attack all the following animals **except**
- A. geese                      B. cattle  
C. sheep                      D. goat
38. Which pair of the following components of the environment are non-living?
- A. Animals and soil  
B. Water and wind  
C. Plants and soil  
D. Animals and plants
39. Which one of the following is **not** a storage pest?
- A. Termites                      B. Weevils  
C. Rodents                      D. Cutworms
40. Which one of the following pairs of sources of electricity produce electricity in the same way?
- A. Geothermal wells and car battery  
B. Dry cells and diesel generator  
C. Car battery and solar panel  
D. Solar panel and car batteries
41. A pupil who buys fruits from market and eats without washing is likely to be infected with
- A. Typhoid and Cholera  
B. Bilharzia and Cholera  
C. Typhoid and Malaria  
D. Bilharzia and Malaria
42. The **main** reason why part of the raingauge is buried in the soil is to
- A. stop water from roofs from entering the funnel  
B. avoid splashing water into the funnel  
C. reduce the rate of evaporation  
D. reduce the amount of water that can enter the funnel
43. When the right ventricle of the heart contracts blood leaves the heart through
- A. Venacava                      B. Aorta  
C. Pulmonary vein                      D. Pulmonary artery
44. The diagram below shows a type of soil erosion.



- The above erosion can be controlled by
- A. building gabious  
B. mulching  
C. terracing  
D. contour farming
45. In which part of the alimentary canal does food mix with bile?
- A. Stomach  
B. Rectum  
C. Duodenum  
D. Colon
46. Which one of the following pairs of insects protect themselves against enemies by stinging?
- A. Bee and wasp  
B. Cockroach and wasp  
C. Scorpion and grasshopper  
D. Housefly and bee
47. Study the circuit below.



- Which **one** of the following statements is **true** about the circuit above?
- A. The bulb light dimly  
B. The bulb will not light  
C. The bulb lights brightly  
D. The bulb lights then go off.
48. People who easily feel dizzy and run short of breath should feed on
- A. boiled eggs  
B. mangoes and oranges  
C. mutton and beef  
D. spinach and liver
49. Which **one** of the following occurs as a result of increase in temperature?
- A. Freezing  
B. Contraction  
C. Melting  
D. Condensation
50. Which material below is **not** needed when constructing a simple beam balance?
- A. Lid  
B. Wire  
C. Nail  
D. Scale