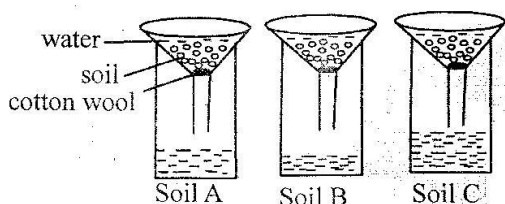


# CLASS 6 END TERM 3 DECEMBER 2021

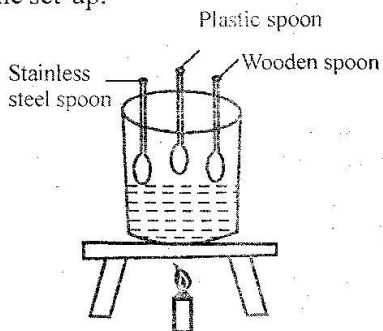
## SCIENCE

- Heat is transferred in liquids through
  - conduction and radiation
  - radiation only
  - convection only
  - convection and conduction
- Which of the following animals lays eggs, has scales and has constant body temperatures?
  - Salamander
  - Frog
  - Dove
  - Snake
- The diagram below was set up to investigate a certain property of soil.



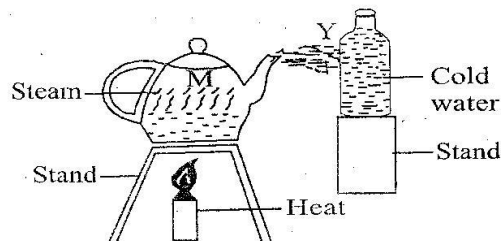
Which statement is true about the experiment?

- Soil A has the smallest air spaces
  - Soil B is good for modelling
  - Soil C has best drainage
  - Soil A, B and C has the same drainage
- Which two changes of matter involve increase and decrease in temperature respectively?
    - Melting and evaporation
    - Evaporation and condensation
    - Condensation and freezing
    - Freezing and evaporation
  - Pupils placed different materials as shown in the set-up.



Which property of heat were the pupils investigating?

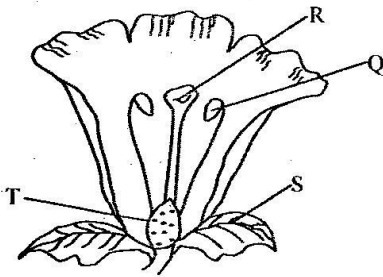
- Conduction of heat
  - Expansion in solids
  - Use of insulators
  - Melting and evaporation
- Which of the following makes a balanced diet?
    - Ugali, Kales, Pawpaw.
    - Rice, Cabbage, Beans.
    - Chapati, Rice, Potato.
    - Maize, Beans, Peas.
  - Which of the following statements is true about mammals? All mammals
    - give birth
    - live on land
    - breathe through lungs
    - have varying body temperature.
  - Which of the following pair of materials will sink in water?
    - Wax and cork.
    - Pin and maize seed.
    - Wood and glass.
    - Marble and plate.
  - The diagram below represents a set-up that was used to demonstrate a certain process.



Which process was taking place at point marked Y?

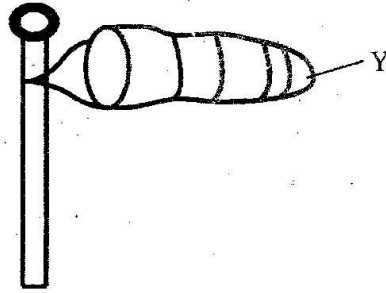
- Melting
- Evaporation
- Condensation
- Freezing

10. Which of the following diseases are immunized to the infants at birth and 9 months respectively?  
 A. Polio and Tuberculosis  
 B. Tuberculosis and whooping cough  
 C. Measles and Yellow fever  
 D. Polio and Measles
11. Which of the following statements is true about seeds?  
 A. Seeds require water and air only to germinate  
 B. The radicle of a seed grows to a root  
 C. The ileum allows water and air in during germination  
 D. The scar protect seed
12. Which one of the following statements is not true about digestion and digestive system?  
 A. Digestion ends in the large intestine  
 B. Digested food is absorbed in the ileum  
 C. Undigested food is stored in the rectum  
 D. Food mixes with digestive juice in the stomach
13. It is important to include food rich in fibre in the diet. This is because fibre  
 A. helps in digestion  
 B. helps in absorption of digested food  
 C. helps in constipation  
 D. helps in removal of undigested food.
14. In which part of a flower shown are pollen grains produced?

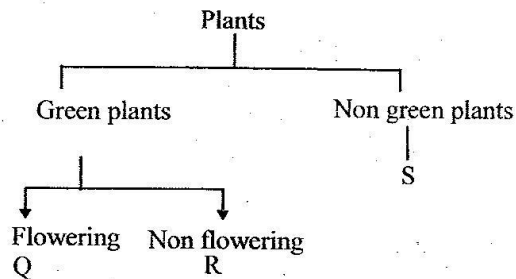


- A. Q                      B. R  
 C. S                      D. T
15. Which one of the following materials will allow light to pass through?  
 A. Mirror  
 B. Air  
 C. Aluminium sheet  
 D. White paper

16. Which statement is true about the weather instrument shown?

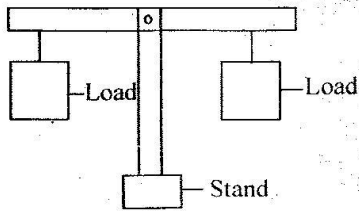


- A. It measures strength of wind only  
 B. It should be placed in a shade  
 C. It should be closed on one end  
 D. Point y shows the direction where the wind is blowing to
17. Which one of the following is a use of water in the farm?  
 A. Irrigation  
 B. Cooling machines  
 C. Washing utensils  
 D. Cooking
18. Which of the following is third stage of HIV infection?  
 A. Window  
 B. Asymptomatic  
 C. Symptomatic  
 D. Full blown
19. The chart below represents classification of plants



- Which plant can be represented by letter Q?  
 A. Pine  
 B. Cedar  
 C. Mushroom  
 D. Pawpaw
20. Which one of the following planets takes the longest time to move round the sun?  
 A. Mars                      B. Neptune  
 C. Venus                     D. Jupiter

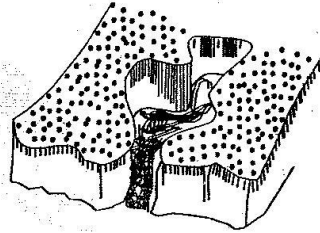
21. Which factor makes small and big piece of wool both to float on water?  
 A. Type of material  
 B. Size of the material  
 C. Shape of the material  
 D. Mass of the material
22. In which part of the breathing system is air cleaned and moistened?  
 A. Nose  
 B. Lungs  
 C. Diaphragm  
 D. Alveoli
23. Which one of the following is an example of harmful animal?  
 A. Aphid  
 B. Dog  
 C. Donkey  
 D. Goose
24. Which of the following crops stores food in the root?  
 A. Irish potato                      B. Pineapple  
 C. Carrot                                D. Sugarcane
25. The diagram below shows a simple machine



The simple machine is used for  
 A. measuring weight of objects  
 B. measuring size of objects  
 C. comparing volume of objects  
 D. comparing mass of objects

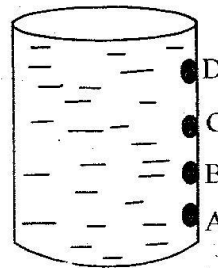
26. Which of the following pairs of plants is correctly matched with the type of root system?
- | Fibrous root | Taproot |
|--------------|---------|
| A. Sugarcane | Onion   |
| B. Carrot    | grass   |
| C. Cabbage   | tomato  |
| D. Maize     | beans   |
27. Which statement is true about animals?  
 A. Fish breathe through lungs  
 B. Amphibians live on land  
 C. Birds lay eggs  
 D. All mammals give birth

28. Soil that is used for modelling also  
 A. is good for farming  
 B. is good for construction  
 C. has best drainage  
 D. has highest capillarity
29. Nimbus clouds have three of the following characteristics **except**  
 A. dark grey in colour  
 B. mountainous in shape  
 C. indicate heavy rainfall  
 D. appear like bundles of cotton wool
30. Kwashiorkor is caused by lack of  
 A. proteins  
 B. vitamins  
 C. carbohydrates  
 D. minerals
31. The diagram below shows a type of erosion.



The type of erosion is called  
 A. rill erosion  
 B. gully erosion  
 C. splash erosion  
 D. sheet erosion.

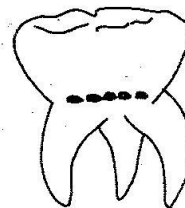
32. Which hole of the container will throw water the farthest?



33. Which food given will provides a person with proteins **only**?  
 A. Milk and maize  
 B. Green banana and avocado  
 C. Eggs and beans  
 D. Coconut and irish potato

34. Liquids have three of the following characteristics **except**  
 A. definite mass  
 B. definite volume  
 C. definite shape  
 D. occupy space
35. In which part of the breathing system does gaseous exchange take place?  
 A. Nose.                      B. Diaphragm.  
 C. Alveoli.                    D. Trachea.
36. Which of the following methods is **not** an example of rotational grazing?  
 A. Paddockling.  
 B. Strip grazing.  
 C. Tethering.  
 D. Zero grazing.
37. Which one of the following is **not** traditional method of preserving food?  
 A. Salting.  
 B. Canning.  
 C. Drying.  
 D. Smoking.
38. The roughness or smoothness of soil is called  
 A. soil texture  
 B. soil capillarity  
 C. soil drainage  
 D. soil humus
39. Which one of the diseases can be prevented by wearing gumboots and gloves?  
 A. Dysentery  
 B. Cholera  
 C. Bilharzia  
 D. Typhoid
40. Which of the following is **not** a reason for lighting a house?  
 A. For safety measure  
 B. To read comfortably  
 C. For warmth  
 D. To discourage pests
41. Which one of the following is **not** an insect?  
 A. Lice.  
 B. Spider.  
 C. Butterfly.  
 D. Flea.
42. The insect pollinated flowers  
 A. have large petals  
 B. are dull in colour  
 C. have light pollen grains  
 D. have loosely hanging petals

43. The following are ways of maintaining tools  
 A. greasing  
 B. sharpening  
 C. cleaning after use  
 D. using them regularly
44. Which one of the following plants is **not** a legume?  
 A. Bean.  
 B. Groundnuts.  
 C. Millet.  
 D. Peas.
45. Which one of the following weeds has a fruit and thorns on the stem and under the leaf?  
 A. Pig weed.  
 B. Mexican marigold.  
 C. Sodom apple.  
 D. Black jack.
46. The following are waterborne diseases **except**  
 A. malaria.                      B. cholera.  
 C. bilharzia.                    D. typhoid.
47. Which statement is **true** about the type of tooth illustrated below?



- A. Is the last to shed off.  
 B. Is used for chewing and biting food.  
 C. Is found at the front of the jaw.  
 D. Is not part of the deciduous teeth.
48. Which farm animal below provides wool and mutton?  
 A. Goat.                      B. Cattle.  
 C. Poultry.                    D. Sheep.
49. In the digestive system, bile is produced in the  
 A. gall bladder.  
 B. pancreas.  
 C. liver.  
 D. duodenum.
50. Which part of the male reproductive system produces sex cells?  
 A. Ovary.                      B. Testes.  
 C. Urethra.                    D. Penis.