

Class 6 mid-term 1 August 2021

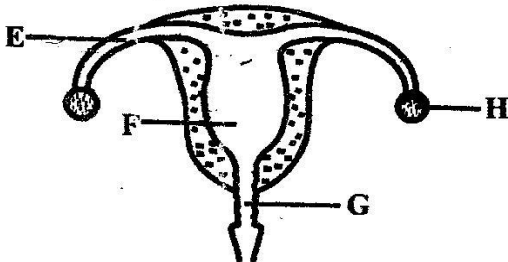
Science

1. Which one of the following is a physical change observed in girls only during adolescence?
- A. Growth of hair in pubic areas
 - B. Voice becomes deep
 - C. Muscles become big
 - D. Enlargement of hip bone

2. Water is important in human diet in all the following ways **except**
- A. prevents constipation
 - B. prevents dehydration
 - C. cools the body
 - D. making of blood

3. Which one of the following is **not** an importance of HIV testing?
- A. Plan ones future
 - B. Prevent the spread of the virus
 - C. Be cured if tested positive
 - D. Enable one make decision about marriage

Study the diagram below and answer questions that follow.



4. Fertilisation takes place in the part marked
- A. F
 - B. E
 - C. G
 - D. H
5. The part marked G is known as
- A. ovary
 - B. uterus
 - C. cervix
 - D. birth canal

6. Which one of the following diseases is **not** a communicable disease?
- A. Tetanus
 - B. Polio
 - C. Cholera
 - D. Malaria

7. The main reason why a raingauge is dug into the soil is to
- A. prevent the water collected from freezing
 - B. prevent water from splashing to the funnel
 - C. prevent collected water from evaporating
 - D. make it firm

8. The substances that helps the body to fight against disease causing germs are called
- A. immunisation
 - B. vaccines
 - C. drugs
 - D. germs

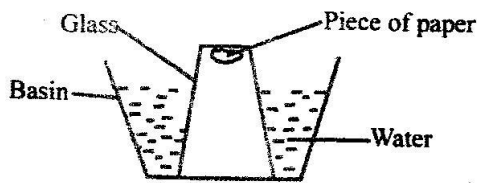
9. The following are characteristics of both plants and animals. Which one is not? They
- A. feed
 - B. reproduce
 - C. make their own food
 - D. respond to changes in the environment

10. Three of the following are oil crops **except**
- A. cowpeas
 - B. sunflower
 - C. groundnuts
 - D. coconut

11. Which one of the following is an effect of HIV/AIDS to the nation?
- A. Low self esteem
 - B. Poor health of an individual
 - C. Neglect and shame
 - D. School drop out

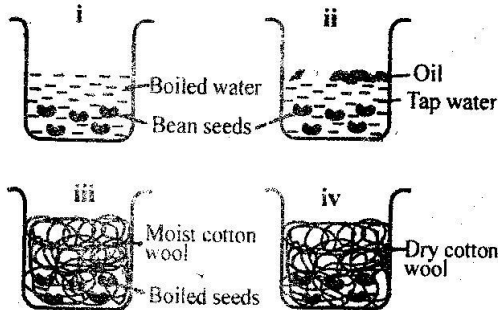
12. Which one of the following is a not a rotational method of grazing?
- A. Paddocking
 - B. Herding
 - C. Strip grazing
 - D. Tethering

Std 5 pupils carried out the experiment below.



13. The pupils concluded that
 A. the paper did not get wet
 B. air is denser than water
 C. matter occupies space
 D. matter expands when heated
14. A flower with brightly coloured petals is also likely to have
 A. heavy and sticky pollen grains
 B. anthers hanging outside the flower
 C. large feathery stigmas
 D. smooth and light pollen grains
15. In making utensils, poor conductors of heat are used as
 A. metallic lids B. radiators
 C. insulators D. stirring utensils
16. The name given to a stage of HIV infection where no visible signs and one tests positive is known as
 A. window stage
 B. symptomatic stage
 C. full blown stage
 D. incubation period

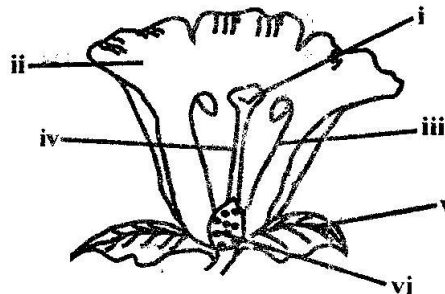
Std 6 pupils set up the experiment below to investigate the conditions necessary for germination.



17. In which set up did the seeds germinate?
 A. iii and iv B. iii only
 C. i and ii D. i and iii

18. The part of a plant which carries out transpiration and gaseous exchange can also
 A. absorb water and mineral salts
 B. carry out photosynthesis
 C. transport water and mineral salts
 D. support the parts of the plant
19. At birth, the child is immunised against
 A. tuberculosis B. B.C.G
 C. measles D. tetanus
20. Which of the following is not a female reproductive organ?
 A. Vagina B. Cervix
 C. Sperm duct D. Oviduct
21. Malaria parasites affect the
 A. plasma B. joints
 C. white cells D. red blood cells
22. A certain disease has the following signs;
 i. Chest pains
 ii. Loss of weight
 iii. Frequent and prolonged cough
 iv. Body becomes pale
 The disease is likely to be
 A. malaria B. typhoid
 C. tuberculosis D. cholera
23. Which is the fifth planet from the sun?
 A. Saturn B. Jupiter
 C. Uranus D. Mars
24. Which one of the following materials has no fixed volume and no fixed shape?
 A. Smoke B. Ice
 C. Chalk dust D. Oil

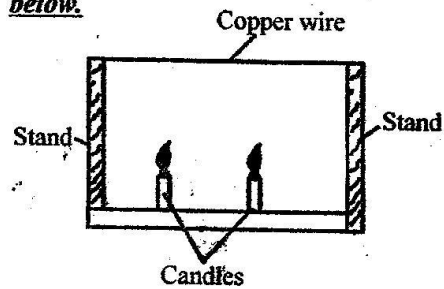
Study the diagram below and answer questions 25 and 26



25. The part that protects the flower during the bud stage is
 A. ii B. v
 C. iv D. iii
26. In which part of the flower does the pollen tube develop?
 A. iv B. vi
 C. i D. v
27. A child felt dizzy, became tired after a short task, was breathless and had a pale skin. The child was most likely suffering from
 A. kwashiorkor B. anaemia
 C. marasmus D. iron
28. Which one of the following is the second stage in seed germination?
 A. Radicle emerges
 B. Seed absorbs water
 C. Testa bursts
 D. Seed swells
29. The transfer of heat that does not require a medium is called
 A. conduction
 B. convection
 C. radiation
 D. insulation
30. The clouds that are low in the sky and appear mountaneous are known as
 A. cumulus
 B. nimbus
 C. cirrus
 D. stratus
31. All the following statements are true about a whale except one. Which one?
 A. Has mammary glands
 B. Has constant body temperature
 C. Lives in water
 D. Has gills
32. The following are ways of maintaining simple tools except
 A. cleaning after use
 B. oiling and greasing
 C. storing tools in cool dampy place
 D. using them for the right purpose

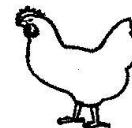
33. The following are ways of destroying the breeding places for mosquitoes except
 A. sleeping under treated nets
 B. clearing bushes
 C. draining stagnant water
 D. spraying oil on stagnant water

Std 5 pupils carried out the experiment below.



34. After some time what was their observation? The
 A. candle went off
 B. wire became loose
 C. wire became more tight
 D. stand collapsed
35. Which physical property of soil cannot be determined by the size of the soil particles?
 A. Water retention B. Texture
 C. Drainage D. Colour
36. Which one of the following is not a use of light?
 A. Photography
 B. Controlling vehicles on roads
 C. Germination
 D. Photosynthesis

37. The diagram below shows a method of heat transfer. Which one is it?



- A. conduction
 B. radiation
 C. convection
 D. conduction and radiation

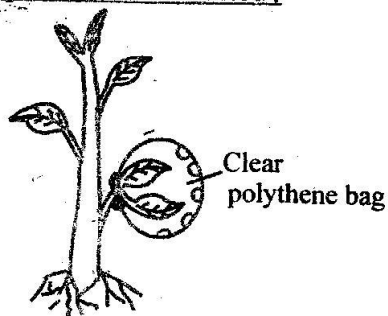
38. Class 5 pupils in a certain school were asked to come with the following materials to make a simple machine;
- i) 2 tins of the same size
 - ii) Nails of about 4cm long
 - iii) Strings or wires
 - iv) Pieces of boards.
- Which machine were they likely to make?
- A. A beam balance B. A see saw
C. A pulley D. A windvane

39. Ndeto's mother prepared lunch consisting of potatoes, spinach, rice, tomatoes and chillies. It is true to say that the food
- A. lacked protective foods
B. lacked energy foods
C. was balanced
D. lacked nutrients for repairing the body

40. Which one of the following is not a special sound?
- A. Ringing a bell B. Hooting
C. Whispering D. Screaming

41. Which one of the following is a non-flowering plant?
- A. Moss B. Sugarcane
C. Grass D. Maize

Pupils of Nyagilo school set up the experiment shown below:



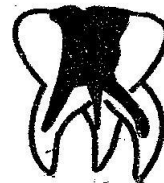
42. What were they investigating?
- A. Photosynthesis
B. Germination
C. Transpiration
D. Respiration
43. The process by which pollen grains and ovules fuse is known as
- A. transpiration B. ovulation
C. pollination D. fertilisation

44. Which one of the following is a recreational use of water?
- A. Fountain
B. Fishing
C. Irrigation
D. Washing
45. Which one of the following factors does not affect floating and sinking?
- A. Material B. Shape
C. Density D. Size

46. The extent of loudness or softness of sound is called
- A. pitch
B. volume
C. tone
D. amplification

47. Which one of the following samples of soil would dry faster when placed under direct sunlight?
- A. Sand
B. Clay
C. Loam
D. Loam and clay

The picture below shows one of the problems related to the teeth.



48. Which problem is shown?
- A. Bleeding gums B. Plague
C. Tooth decay D. Bad breath
49. Which animal is correctly matched with its way of protection?
- | Animal | Protection |
|-------------|-------------|
| A. Scorpion | crawls |
| B. Mosquito | sucks blood |
| C. Bee | bites |
| D. Snake | bites |
50. The following are airways **except**
- A. lungs B. trachea
C. nose D. bronchus