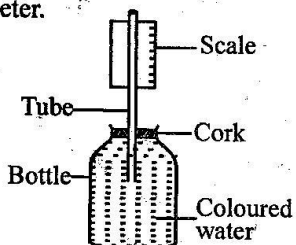


**CLASS 7 END TERM 1 AUGUST 2021 SCIENCE**

1. Which of the following structures make-up the stamen part of a plant?  
 A. Filament, anthers  
 B. Stigma, style, ovary  
 C. Ovules, stigma, style  
 D. Anthers, filament, stigma

2. Which one of the following statement is true about the second planet in the solar system? It  
 A. is the smallest planet.  
 B. is the planet nearest to the sun.  
 C. is the brightest planet.  
 D. has rings around it.

3. The diagram below shows a liquid thermometer.



What will happen to the level of the liquid in the tube when the temperature rises? The level

- A. will drop  
 B. remains the same  
 C. will drop then rise  
 D. will rise
4. The method of grazing where animals are reared in stalls is  
 A. herding                      B. paddocking  
 C. zero grazing                D. tethering
5. The following are uses of parts of air:  
 i) *Photosynthesis*  
 ii) *Preservation of drinks*  
 iii) *Germination*  
 iv) *Putting out fire*  
 Which of the uses are for the part that occupies about 0.03% of air?  
 A. i and ii                      B. i, ii and iv  
 C. ii, iii and iv                D. i, iii and iv

6. Which of the following parts of the breathing system allows exchange of gases?

A. Bronchioles                B. Lungs  
 C. Nose                         D. Trachea

7. Grade Five pupils were learning about movement of small animals. Which group of animals did not move the same way as the rest?

A. Louse, spider, tick  
 B. Butterfly, mosquito, wasp  
 C. Centipede, flea, millipede  
 D. Mite, lizard, gecko

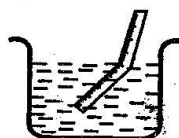
8. Which of the following parts of the male reproductive system produces sex cells?

A. Penis                         B. Sperm duct  
 C. Urethra                      D. Testes

9. During a field study, Grade Five pupils visited a local weather station. They observed a wind sock pointing towards the north. In which direction will the arrow of the wind vane in the same station likely to be pointing?

A. North                        B. South  
 C. East                         D. West

10. A group of pupils sipped a pencil in a glass of water as shown below.



The pupils were investigating

A. how light travels    B. reflection  
 C. refraction                D. dispersion

11. A child had the following signs and symptoms:

i) *Pale skin*  
 ii) *White palms and fingernails*  
 iii) *Dizziness*

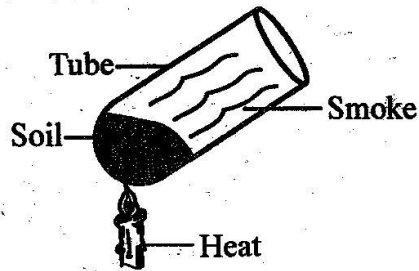
The child is likely to be suffering from

A. kwashiorkor                B. marasmus  
 C. anaemia                      D. rickets

12. Mulching is mainly practised in order to  
 A. control erosion  
 B. control weeds  
 C. reduce water absorption in the soil  
 D. conserve soil moisture

13. The type of soil which has cracks when dry is likely to  
 A. have low capillarity  
 B. retain more water  
 C. have a rough texture  
 D. have large air spaces

14. The experiment below was assembled by a Science teacher during a practical lesson.



The component being investigated is

- A. water in the soil.  
 B. animals in the soil  
 C. organic matter in the soil  
 D. air in the soil
15. Green fodder preserved without drying is  
 A. silage                      B. hay  
 C. legumes                    D. concentrates

16. Which one of the following is not a traditional method of preserving food?  
 A. Salting                      B. Smoking  
 C. Freezing                    D. Drying

17. Which of the following food crops is not correctly classified into the group where it belongs?

<u>Cereals</u>	<u>Legumes</u>	<u>Tubers</u>
A. Barley	Peas	Carrots
B. Wheat	Groundnut	Ginger
C. Sunflower	Rice	Onions
D. Millet	Greengrams	Arrowroots

18. Which of the following is a source of body building and repair?  
 A. Peas                          B. Yarns  
 C. Chips                         D. Rice

19. The following simple tools are sharpened to make work easier except  
 A. hammer                      B. saw  
 C. jembe                         D. chisel

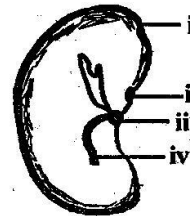
20. Which one of the following is a change of state?  
 A. Metals expanding after being heated  
 B. Salt dissolving in water  
 C. Soil forming mud in water  
 D. Water boiling into vapour

21. Which one of the following is not a source of light energy?  
 A. Moon  
 B. Dry cells  
 C. Sun  
 D. Glow worms

22. Which one of the following is not a reason why medical drugs should be stored in their properly labelled container? To avoid  
 A. contamination  
 B. getting expired  
 C. getting spoilt  
 D. wrong usage

23. An infant at the age of nine months is vaccinated against  
 A. Tuberculosis and polio  
 B. Tetanus and measles  
 C. Yellow fever and measles  
 D. Diphtheria and pertussis

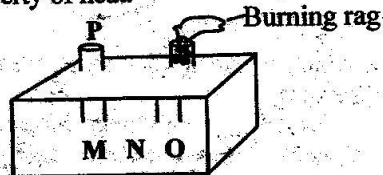
24. The diagram below shows a bean seed.



The microphyle is labelled

- A. i                                 B. ii  
 C. iii                               D. iv
25. Which one of the following statements explains why air rises on heating? Hot air  
 A. has no shape  
 B. has more energy than cold air  
 C. is denser than cold air  
 D. has a lower density than cold air

26. A duck and female gecko are similar in that, both  
A. are cold blooded  
B. lay eggs  
C. are warm blooded  
D. are invertebrates
27. The diagram below represents a set-up that can be used to demonstrate a certain property of heat.



For the experiment to be successful, the burning candle should be placed at the part labelled

- A. P                      B. M  
C. N                      D. O
28. Heat from the sun reaches the earth's surface by  
A. convection  
B. convection and radiation  
C. radiation  
D. conduction only
29. Which of the following materials is translucent?  
A. Mirror                      B. Tinted glass  
C. Kerosene                  D. Milk
30. A boy stood in front of a mirror with a T-Shirt written "BIRD". How did the word appear in the mirror?  
A. BIRD                      B. DRIB  
C. DRIB                      D. BIRD
31. Below is a type of reflection



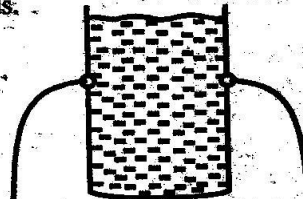
This type of reflection is likely to take place on

- A. smooth, shiny surface  
B. rough, shiny surface  
C. smooth, dull surface  
D. rough, dull surface

32. John and James were balancing on a see-saw. If James is 60 kg and John is 40 kg, all the following can be done for the two boys to balance **except**  
A. John should move away from the centre  
B. James should move closer to the pivot  
C. The pivot should be moved closer to John  
D. The pivot should be moved closer to James

33. Which of the following plants stores food in the leaves?  
A. Cassava                      B. Carrots  
C. Onions                      D. Bananas
34. Which among the following is the best weed control method in a nursery?  
A. Using chemicals  
B. Digging them out  
C. Mulching  
D. Uprooting

35. Grade 4 pupils carried out the following experiment to investigate pressure in liquids.

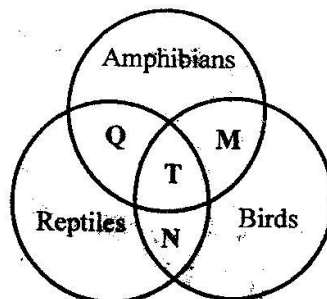


The best conclusion after the experiment was that pressure in liquids

- A. increases with depth  
B. is exerted in all directions  
C. increases with height  
D. is equal at the same depth
36. Which one of the following parts of a flower performs the same function as the testis in human beings?  
A. Anthers                      B. Stigma  
C. Pollen grains              D. Style
37. The following are characteristics of all animals **except**  
A. laying eggs  
B. growing  
C. removing waste  
D. moving

38. Which among the following diseases is **not** communicable?  
 A. Tuberculosis      B. Malaria  
 C. Kwarshiokor      D. Cholera
39. Which of the following items is **not** suitable for cleaning teeth?  
 A. Toothpick  
 B. Dental floss  
 C. Chewed twigs  
 D. Salty water
40. Which among the following is a common physical change in adolescent boys and girls?  
 A. Growth of hair in the chest.  
 B. Wet dreams  
 C. Production of sex cells  
 D. Broadening of hips
41. Which of the following components of the diet helps in preventing constipation?  
 A. Fibre  
 B. Water  
 C. Vitamins  
 D. Mineral salts
42. Which of the following components of blood is destroyed by HIV virus?  
 A. White cells  
 B. Platelets  
 C. Red cells  
 D. Plasma
43. The following are reasons why lighting a house is important **except**  
 A. read comfortably  
 B. discourage pets  
 C. avoid unnecessary injuries  
 D. warm the house
44. Which of the following is the second phase of HIV infection?  
 A. Full blown  
 B. Asymptomatic  
 C. Symptomatic  
 D. Window
45. Curative drugs are also known as  
 A. vaccines  
 B. antibiotics  
 C. herbal extracts  
 D. analgesics

46. Below are characteristics of vertebrates.



Which characteristics are found in Q and T respectively?

- A. Breathe through lungs, have scales  
 B. Have scales, live their whole life on land  
 C. Have varied body temperature, lay eggs  
 D. Lay unfertilised eggs.
47. Which of the following components of blood prevents excessive bleeding in an injury?  
 A. Red blood cells  
 B. White blood cells  
 C. Plasma  
 D. Platelets
48. The diagram below shows a mammalian heart.
- 
- The blood vessel marked M is the  
 A. aorta  
 B. venacava  
 C. pulmonary artery  
 D. pulmonary vein
49. Which of the following drugs causes hallucinations?  
 A. Bhang      B. Tobacco  
 C. Miraa      D. Alcohol
50. Digestion of food ends in the  
 A. anus  
 B. large intestines  
 C. small intestines  
 D. stomach