

# OPENER STD 4 TERM 2 2020 SCIENCE AND TECHNOLOGY ACTIVITIES

NAME.....

Learner's Number

Gender Boy

Girl

County name ..... County code

Sub county name ..... Sub county code

School name ..... School code

The grid below is to be filled by the teacher after marking the learner's work

	Level 1	Level 2	Level 3	Level 4
Numbers 1-15				
Measurement 16-23				
Geometry 24-25				




## SCIENCE AND TECHNOLOGY

1. A stone is a \_\_\_\_\_ thing  
(living, non \_\_ living)

Fill in the gaps to get characteristics of animals as living things

2. F \_\_\_\_\_ d.  
3. Gr \_\_\_\_\_ w.  
4. M \_\_\_\_\_ v \_\_\_\_\_.  
5. D \_\_\_\_\_ e.

Match these materials we use for safety with where they are worn

6.  Eyes
7.  Legs
8.  Hands

Name any two small animals

9. \_\_\_\_\_  
10. \_\_\_\_\_  
11. Moving air is called \_\_\_\_\_.  
12. The natural place where a plant grows is called \_\_\_\_\_  
(environment, habitat)

13. \_\_\_\_\_ is a way of passing message without talking.  
(Gestures, Mumbling, Pointing)

14. Diseases are caused by \_\_\_\_\_  
(animals, germs, cold)

15. Cactus plants grow in very \_\_\_\_\_ areas.  
(wet, dry, cold)

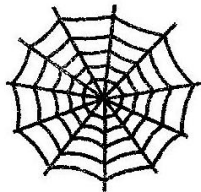
16. A snake is \_\_\_\_\_  
(a vertebrate, an invertebrate)

Name two parts of the digestive system.

17. \_\_\_\_\_  
18. \_\_\_\_\_  
19. Which tooth is used for tearing?  
\_\_\_\_\_

20. Molar tooth is used for \_\_\_\_\_.

21. This is a \_\_\_\_\_. It is made by a \_\_\_\_\_.



21. Draw a weather symbols showing
- |           |           |
|-----------|-----------|
| Windy day | Rainy day |
|           |           |

24. \_\_\_\_\_ is used when cleaning the toilet to kill germs.  
(Disinfectant, Soap, Ash)

25. Name one plant that we eat its roots  
\_\_\_\_\_