

OPENER STD 8 TERM 2 2020

SCIENCE

NAME.....

Learner's Number

Gender Boy

Girl

County name County code

Sub county name Sub county code

School name School code

The grid below is to be filled by the teacher after marking the learner's work

	Level 1	Level 2	Level 3	Level 4
Numbers 1-15				
Measurement 16-23				
Geometry 24-25				

1. Which one of the following is **not** an immunizable disease?
 A. Malaria B. Diphtheria
 C. Tuberculosis D. Tetanus

2. The following are characteristics of a certain blood vessel;
 (i) *Carries blood away from the heart*
 (ii) *Has no valves*
 (iii) *Carries blood with less concentration of carbodioxide*
 (iv) *Blood in it is in high pressure*
 The vessel is **likely** to be
 A. aorta
 B. pulmonary vein
 C. pulmonary artery
 D. venacava

3. Making terraces **mainly** controls
 A. gulley erosion
 B. rill erosion
 C. sheet erosion
 D. splash erosion

4. Some plants have tendrils which are used to
 A. facilitate pollination
 B. identify a suitable habitat for the plant
 C. facilitate interdependence
 D. protect itself against enemies

5. Which one of the following materials can be able to form a shadow?
 A. Car windscreen
 B. Clear water
 C. Skylight
 D. Mirror

6. Which of the following components of blood require a lot of iron in their formation?
 A. Plasma
 B. White cells
 C. Red cells
 D. Platelets

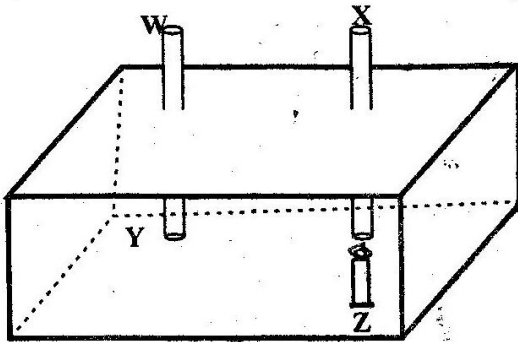
7. Which one of the following is **not true** about a stone and paraffin? Both
 A. have definite shape
 B. have definite size
 C. have definite mass
 D. expand when heated

8. Which one of the following is the **most** appropriate method of controlling human intestinal worms?
 A. Observing the rule of three
 B. Cutting short tall grass and draining stagnant water
 C. Proper sanitation
 D. Regular medical check up

9. The purpose of treading of car tyres is to
 A. make them durable
 B. make them attractive
 C. increase the grip with the road
 D. reduce the force opposing motion

10. A person suffering from anaemia will show all the following signs **except**
 A. general body fatigue
 B. pale finger nails
 C. swollen limbs and hands
 D. breathlessness

11. The diagram below shows a set-up used to explain convection in air



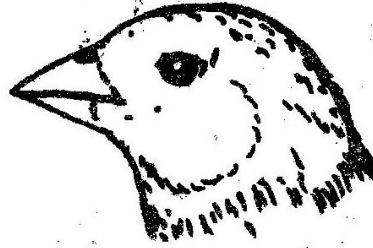
In the demonstration, a smouldering paper was **likely** to be placed at point

- A. W B. X
C. Y D. Z
12. Which one of the following plants has nitrogen fixing bacteria in its roots?
- A. Sisal
B. Green grams
C. Millet
D. Sugarcane
13. Which one of the following parts of the digestive system does not produce a digestive juice?
- A. Mouth B. Gullet
C. Stomach D. Ileum
14. A beam balance is used in
- A. measuring masses of objects.
B. comparing masses of objects.
C. measuring force of moving objects.
D. comparing force of moving objects

15. Which of the following is not a function of all roots in flowering plants?

- A. Absorption of water
B. Absorption of minerals
C. Food storage
D. Anchorage

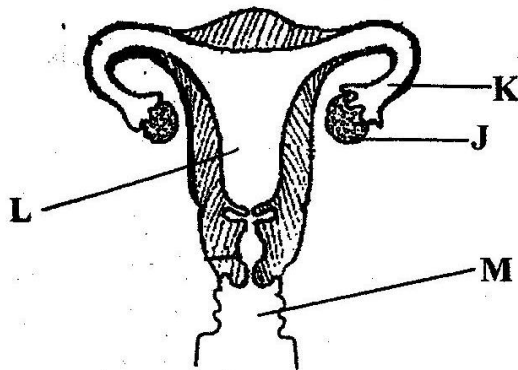
16. The diagram below shows a beak of a certain bird.



The beak is **likely** to be of

- A. a pigeon B. an eagle
C. a duck D. a sunbird
17. Which one of the following signs of ill health in animals is **mainly** brought about by external parasites?
- A. Loss of weight
B. Lowered yields
C. Irritation
D. Stunted growth
18. Which pair of food stuffs below are all energy giving?
- A. Millet and sunflower oil
B. Peas and maize
C. Potatoes and beans
D. Orange and lemon
19. Which one of the following factors does not affect sinking and floating of an object?
- A. Size B. Mass
C. Materials D. Shape

20. Which of the following shows the industrial use of water?
- Skiing
 - Mixing chemicals
 - Irrigation
 - Washing implements
21. Which one of the following is a characteristic of animals adapted to hopping and leaping?
- Wings and feathers
 - Strong huge legs
 - Streamlined bodies
 - Hollow bones
22. The presence of carnassial teeth in most carnivorous animals help in
- slicing flesh from bones
 - crushing bones
 - tearing flesh
 - holding prey
23. The diagram below shows a female reproductive system



- The ovum fuses with the sperm in the part labelled
- J
 - K
 - I
 - M
24. The absence of canines in most herbivores helps in
- holding food tightly
 - grinding food
 - grasping grass
 - turning food for proper chewing
25. Which of the following statements about an air thermometer is true?
- The scale is numbered from top to bottom
 - It works on the fact that air exerts pressure
 - The scale is numbered from bottom to top
 - When the temperature is high the level of the liquid in the tube rises
26. In an experiment of making a model of the breathing system, the lungs are represented by
- a container
 - a rubber sheet
 - balloons
 - a cork
27. The following are ways through which small animals protect themselves against enemies apart from
- coiling
 - running away
 - stinging
 - hopping

28. Which one of the following is a major living component of the environment?

- A. Plants
- B. Soil
- C. Water
- D. Air

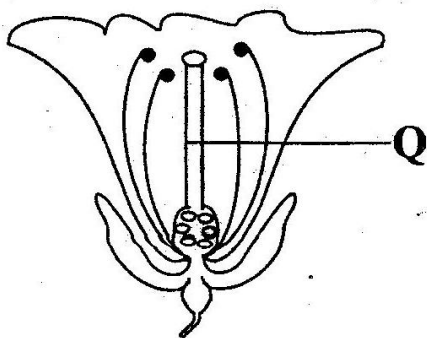
29. Which one of the following statements about HIV/AIDS is correct?

- A. A person may test negative at asymptomatic stage
- B. It can be spread through transfusing screened blood
- C. AIDS develops in symptomatic stage
- D. At full blown stage the body cannot fight diseases

30. Which one of the following are storage pests?

- A. Rats
- B. Stalkborers
- C. Aphids
- D. Cutworms

31. A cross section through a flower is shown below.



The part marked Q

- A. is the filament
- B. allows the development of pollen tube
- C. is where pollen grains germinate
- D. produces female gametes

32. Which one of the following is not a disadvantage of stall feeding?

- A. It requires a lot of labour
- B. It requires a lot of capital to start
- C. Requires a big piece of land
- D. Manure is easily collected

33. During the process of birth which of the following is the last stage?

- A. Cutting the umbilical cord
- B. Removal of the after birth
- C. The bursting of the amnion sac
- D. Baby comes out head first

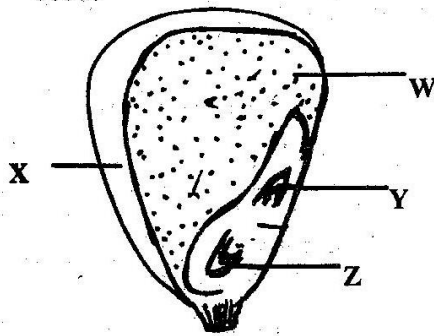
34. Lack of minerals may lead to a child suffering from

- A. kwashiorkor and marasmus
- B. anaemia and kwashiorkor
- C. rickets and anaemia
- D. marasmus and rickets

35. Which one of the following processes does not take place in a liquid when there is a change in temperature?

- A. Freezing
- B. Condensation
- C. Evaporation
- D. Contraction

36. The diagram below shows a maize seed.



Which parts make up the embryo of the seed?

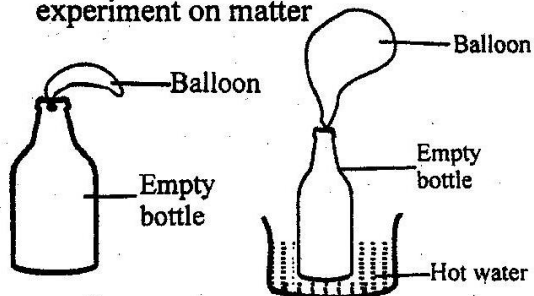
- A. W and X B. X and Y
C. Y and Z D. W and Z
37. Which one of the following shows a set of plants which cannot manufacture their own food?
- A. Mushroom, yeast, toadstool
B. Fir, cedar, fern
C. Liverworts, mould, puffball
D. Moss, cypress, cactus

38. Which one of the following shows a way of lighting a room naturally?

Using

- A. hurricane lamps
B. candles
C. skylights
D. fluorescent tubes

39. The diagram below shows an experiment on matter



The experiment shows that

- A. air occupies space
B. liquid occupies space
C. liquids expand when heated
D. air expands when heated

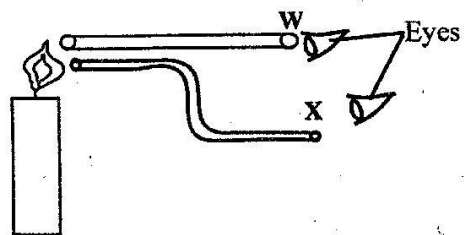
40. Which of the following processes is the part of air occupying about 21% not required?

- A. Combustion B. Photosynthesis
C. Germination D. Breathing

41. Which one of the following is not a safety precaution measure against lightning?

- A. Playing in the open fields
B. Using rubber shoes with thick soles
C. Avoiding sheltering under trees when it is raining
D. Keeping off walls when it is raining

42. The experiment below was carried out by class six pupils.



Person W saw the candle but X did not.

This is because of

- A. refraction
B. reflection
C. how light travels
D. bending of light

43. Which one of the following methods of maintaining simple tools helps in minimising accidents?
- Sharpening
 - Proper storage
 - Lubrication
 - Cleaning after use
44. A frog and a chicken are similar in that both
- lay fertilised eggs
 - breathe by means of lungs
 - have constant body temperature
 - have scales
45. Which one of the following is an example of compound fertilizer?
- Sulphate of potash
 - Calcium ammonium nitrate
 - Diamonium phosphate
 - Double superphosphate
46. Draining away stagnant water and wearing protective clothing helps in preventing
- malaria only
 - bilhazia only
 - bilhazia and malaria
 - typhoid and malaria
47. Which one of the following components of blood is attacked by the virus that causes AIDS?
- Plasma
 - Red blood cells
 - Platelets
 - White blood cells
48. Which one of the following adaptations of plants growing in dry areas help in preventing loss of water through evaporation?
- Needle-like leaves
 - Deep root system
 - Thick waxy cuticle
 - Shedding of leaves
49. Which one of the following sexually transmitted diseases is characterised by a soft chancre on the penis of a male?
- Syphilis
 - Chancroid
 - Gonorrhoea
 - HIV/AIDS
50. Which one of the following materials can be attracted by a magnet?
- Steel spoon
 - Graphite pencil
 - Aluminium pan
 - Copper coin