

OPENER STD 7 TERM 2 2020

SCIENCE

NAME.....

Learner's Number

Gender Boy

Girl

County name County code

Sub county name Sub county code

School name School code

The grid below is to be filled by the teacher after marking the learner's work

	Level 1	Level 2	Level 3	Level 4
Numbers 1-15				
Measurement 16-23				
Geometry 24-25				

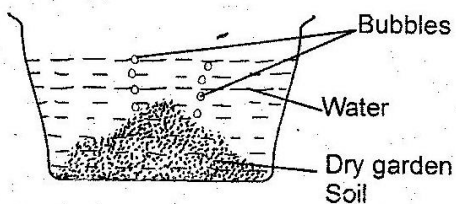
1. Which one of the following group consist of animals that live in water?
 - A. Crocodile, turtle, tortoise
 - B. Duck, snail, pig
 - C. fish, whale, dolphin
 - D. Leopard, hyéna, monkey

2. Sunflower, coconut and cotton seeds are examples of
 - A. cash crops
 - B. fibre crops
 - C. tubers
 - D. weeds

3. The ability of the soil to let water go through it is known as
 - A. capillarity
 - B. drainage
 - C. texture
 - D. soil profile

4. Which of the following is **NOT** part of the circulatory system?
 - A. Heart
 - B. Lungs
 - C. Blood
 - D. Blood vessels

5. Std. four pupils mixed soil and water and their observation was shown below.



This was to prove that soil has

- A. water
- B. air
- C. living organisms
- D. bubbles

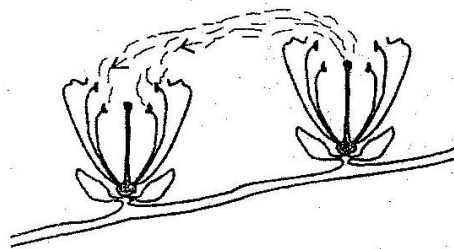
6. The **MAIN** reason why animals move from place to place is to
 - A. look for food and water.
 - B. look for shelter.
 - C. escape from danger.
 - D. look for male partners.

7. Which of the following is a myth and misconception about HIV/AIDS?
 - A. AIDS is a curse.
 - B. AIDS does not exist.
 - C. AIDS is caused by witchcraft.
 - D. HIV/AIDS is only transmitted by prostitutes.

8. Which one of the following is a **COMMON** effect in bhangs, khat and alcohol?
 - A. Addiction.
 - B. Lack of concentration.
 - C. Marital conflict.
 - D. Dizziness.

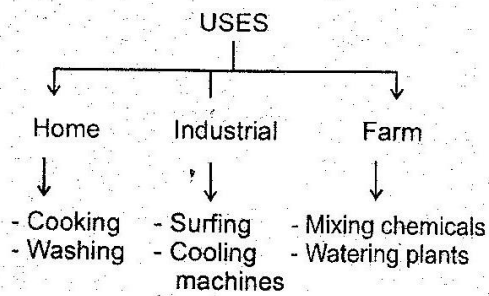
9. The following are functions of the stem **EXCEPT**
 - A. transport of water.
 - B. storage of food.
 - C. breathing
 - D. protection

10. The type of pollination below is known as



- A. self pollination
- B. cross pollination
- C. insect pollination
- D. wind pollination

11. The following are uses of water



Which of the following use is **WRONGLY** placed?

- A. Surfing
- B. Mixing chemicals
- C. Watering plants
- D. Cooking

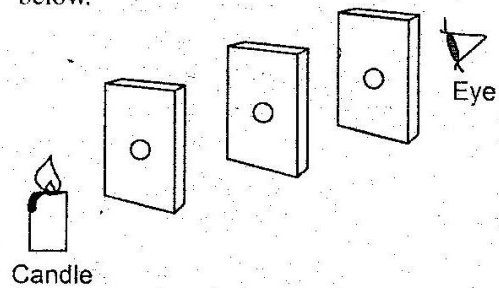
12. The tendency of an object to remain in the same state whether moving or stationary is called

- A. friction
- B. inertia
- C. force
- D. gravity

13. Which of the following processes involves use of carbon dioxide?

- A. Preservation of soft drinks.
- B. Making electric bulbs.
- C. Burning of materials.
- D. Making of proteins by leguminous plants.

14. Std.6 pupils at Joska Academy collected match boxes and candle to make the set up below.



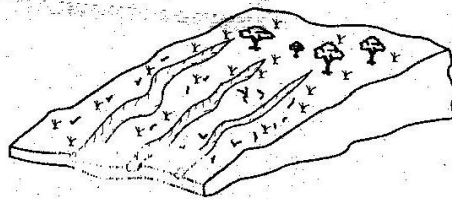
Which of the following were pupils investigating?

- A. Reflection of light.
- B. Refraction of light.
- C. How light travels.
- D. Making of shadows.

15. Which of the following type of food can be preserved by drying?

- A. Grains
- B. Fresh milk
- C. Cooked food
- D. Fresh fruits

16. The diagram below shows a type of soil erosion.



The following are descriptions of the type of soil erosion shown above **EXCEPT** - It

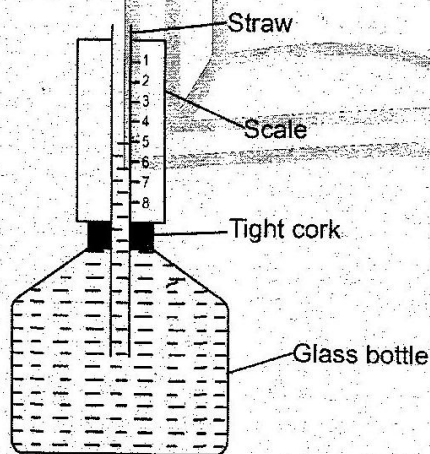
- A. is known as rill erosion.
- B. can be prevented by terracing.
- C. forms shallow channel in the soil.
- D. is form of a land slide.

17. The following are ways in which bilharzia can be prevented **EXCEPT**
- draining stagnant water.
 - drinking boiled or treated water.
 - wearing gumboots when walking on stagnant water.
 - killing water snails.

18. An area set aside for growing grass or a mixture of grass and legumes is known as
- fodder
 - concentrate
 - pasture
 - lucerne

19. Strong teeth in humans can be maintained by
- eating sugary food.
 - eating vegetables and fruits.
 - using toothpicks to remove sticky objects on teeth.
 - crushing objects using them.

20. The diagram below shows a liquid thermometer



The mistake they did was to

- using a glass bottle.
- using the wrong scale.
- filling the water in the bottle.
- Using a tight cork.

21. The following is **TRUE** about the planets **EXCEPT**

- Mercury is the nearest to the sun.
- Saturn has a major ring around it.
- Earth is the smallest planet.
- The sizes of planets differ.

22. Wind pollinated flowers have the following characteristics **EXCEPT**

- have no scent.
- small in size.
- produce large amount of pollen.
- produce nectar.

23. Helping a person to understand his or her problem and also find a solution to the problem is known as

- counselling
- testing
- vaccination
- immunization

24. During breathing the nose helps in all the following **EXCEPT**

- warming the air.
- trapping dust particles.
- moistening the air.
- absorbing the air

25. Which one of the following immunisable diseases is the child given at the age of 6 weeks, 10 weeks and 14 weeks?

- Polio, Tuberculosis and Measles
- Diphtheria, Whooping cough and Tetanus
- Measles and Tuberculosis
- Typhoid, Cholera and Yellow fever

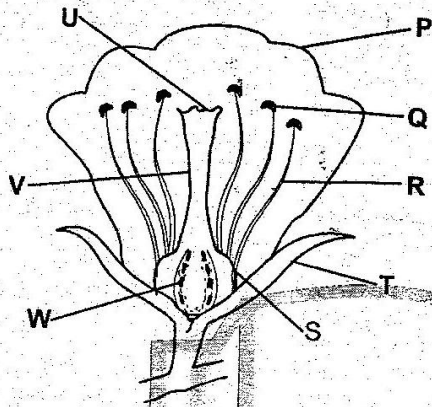
26. Plasma transports all of the following **EXCEPT**

- urea
- digested food
- oxygen
- heat

27. Which of the pairs below represent non living components of the environment?

- A. Air and plants.
- B. Water and animals
- C. Soil and water
- D. Plants and animals

28. The diagram below shows parts of a flower



Which of the above represent the parts that are neither male nor female?

- A. U and Q
- B. W and S
- C. Q and R
- D. T and P

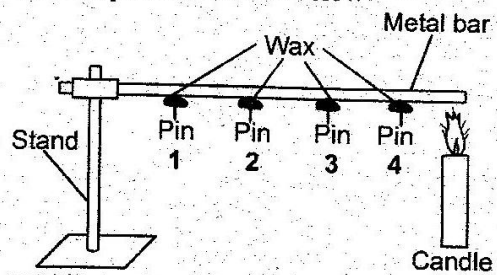
29. Starch in the body are digested in the

- A. stomach
- B. duodenum
- C. mouth
- D. small intestine

30. The process by which a seed develops to a seedling is called

- A. fertilization
- B. fusion
- C. germination
- D. pollination

31. Std 5 pupils at Umoja Primary School set up an experiment shown below



Which of the following was NOT a true observation?

- A. Pin 1 fell off last.
- B. The metal bar conducted heat.
- C. Pin 4 fell off last.
- D. The candle wax melted.

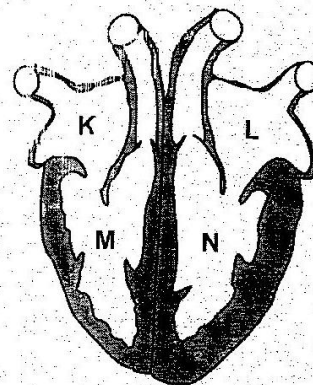
32. Mutua a farmer in Athi river uses a method of grazing with the following characteristics.

- (i) A big piece of land is divided into small portions.
- (ii) Each portion is surrounded by temporary fence.
- (iii) Each portion has a gate and water trough.

The method he uses is **LIKELY** to be

- A. paddocking
- B. strip grazing
- C. zero grazing
- D. tethering

33. The diagram below represents a human heart.



Oxygenated blood first enters chamber

- A. K
- B. L
- C. M
- D. N

34. The following are effects of HIV/AIDS. Which among them is an effect to an individual?

- A. Rise in school dropout.
- B. Congestion in hospitals.
- C. Low self esteem.
- D. Poor economy.

35. Which one of the following farm animal is a source of dairy and mutton?

- A. Sheep
- B. Goat
- C. Poultry
- D. Cattle

36. Which one of the following groups of food represent body building foods? —

- A. Meat, rice and oranges
- B. Chapati, potatoes and cabbages
- C. Rice, liver and beef
- D. Arrowroots, milk and chicken.

37. Which of the following represent poor conductors of heat?

- A. Copper and iron
- B. Alluminum and silver
- C. Steel and silver
- D. Wood and plastic

38. The liquid part of blood is

- A. platelets
- B. plasma
- C. red blood cells
- D. white blood cells

39. Which of the following is NOT an example of a blood vessel?

- A. Aorta
- B. Auricle
- C. Vena cava
- D. Pulmonary vein

40. The following are signs and symptoms of disease.

- (i) Fever
- (ii) Coughing blood
- (iii) Diarrhoea
- (iv) Shivering followed by sweating
- (v) Loss of weight

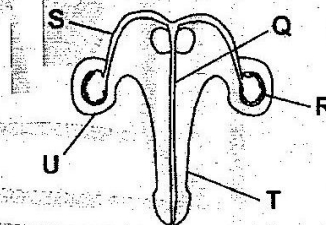
Which among the above are signs of malaria?

- A. (iii), (iv) and (v)
- B. (ii) and (v)
- C. (ii), (iii) and (iv)
- D. (i), (ii) and (v)

41. The leafy part of a young plant is known as

- A. embryo
- B. plumule
- C. radicle.
- D. micropyle

42. The diagram below represents the male reproductive system.



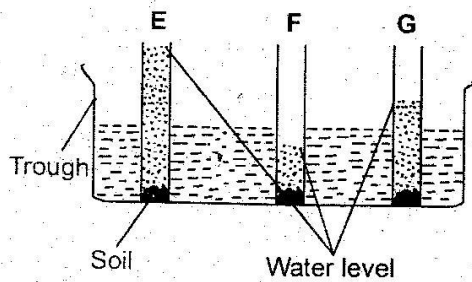
The function of part T is to

- A. transport sperms from testis to the urethra
- B. protect the testes.
- C. store sperms
- D. deposit sperms into the vagina

43. During breathing in the

- A. lungs volume decrease.
- B. diaphragm forms a dome shape.
- C. chest cavity increases in volume.
- D. air enters the chest cavity.

44. The experiment below was done using different types of soil.



Which type of soil would be the **BEST** for growing crops?

- A. E
B. F
C. G
D. E and G
45. Which of the following weather instrument is **WRONGLY** matched with the aspect of weather it records?
- | Instrument | Aspect |
|----------------|----------------------------------|
| A. Windvane | - Speed of wind |
| B. Windsock | - Direction and strength of wind |
| C. Raingauge | - Amount of rainfall |
| D. Thermometer | - Temperture |
46. Lukeman saw a child with the following deficiency and symptoms
- Thin and weak.
 - Crying often.
 - Bones visible underneath the skin.
 - He looked like a small old man.

The child was **LIKELY** to suffer from

- A. Kwashiokor
B. Rickets
C. Marasmus
D. Anaemia
47. Which of the following mineral is necessary in the clotting of blood after an injury?
- A. Calcium
B. Iron
C. Phosphorus
D. Mineral salts

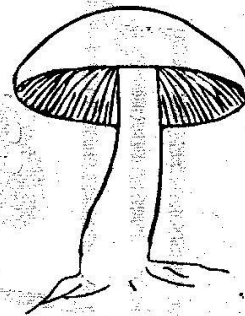
48. Large amounts of water can **BEST** be stored in the

- A. pot
B. tank
C. bucket
D. dam

49. Moving air is necessary in all of the following **EXCEPT**

- A. winnowing
B. irrigation
C. flying kites
D. drying clothes

50. The plant shown below belong to a group of plants known as



- A. insectivorous plants
B. green plants
C. conifers
D. fungi