

OPENER STD 6 TERM 2 2020

SCIENCE

NAME.....

Learner's Number

Gender Boy

Girl

County name County code

Sub county name Sub county code

School name School code

The grid below is to be filled by the teacher after marking the learner's work

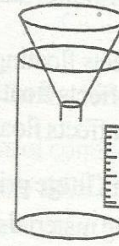
	Level 1	Level 2	Level 3	Level 4
Numbers 1-15				
Measurement 16-23				
Geometry 24-25				

SCIENCE

Time: 1 hour 40min

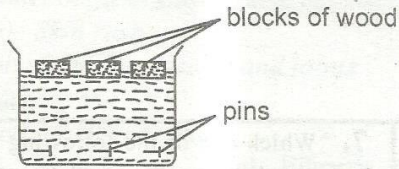
1. A cer... or nature walk one
aftern... d with the following
characteristics:
(i) *Indicate fine weather*
(ii) *Have a flat base.*
(iii) *Found high in the sky*
Which type of cloud did they see?
A. Nimbus
B. Cumulus
C. Stratus
D. Cirrus
2. The following group of food consists of sources
of fats and oils **EXCEPT**?
A. Cooking fat, cod liver oil, salads
B. Avocado, groundnuts, corn
C. Cashew nuts, simsim, sunflower
D. Tubers, fruits, vegetables
3. Which one of the following is **NOT** a way of
maintaining simple tools?
A. Use of right purpose
B. Cleaning before use
C. Oiling and greasing
D. Sharpening cutting tools
4. Convection is a method of heat transfer
through
A. liquids only
B. liquids and gases
C. solids
D. gases only
5. Which one of the following immunisable
disease is administered at birth
A. Tetanus
B. Diptheria
C. Measles
D. Polio
6. Malaria can be prevented in the following
ways **EXCEPT**
A. Using mosquito net
B. Pouring oil on stagnant water
C. Draining moving water
D. Clearing bushes

7. Which one of the following is **NOT TRUE**
about the weather instrument shown below?

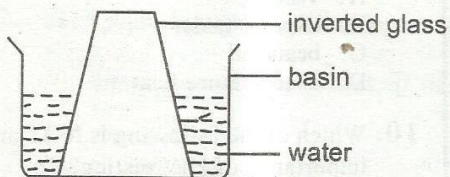


- A. It should be dug at least 15 cm below the ground.
 - B. The funnel should be of the same diameter as of the base of the collecting funnel.
 - C. It should be placed at least 30 cm above the ground.
 - D. It should be kept under a tree.
8. It is **NOT TRUE** to say that water
A. removes waste products from the body.
B. helps in preventing constipation.
C. helps to make blood.
D. helps in digestion of food.
 9. The reason why coloured water is used in
the construction of a liquid thermometer is to
make it
A. visible
B. expand faster
C. beautiful
D. absorb more heat
 10. Which of the following is **NOT** an
importance of HIV testing? To
A. decide on marriage
B. plan for the future of one's dependants.
C. separate those with HIV from those
without.
D. overcome fear.
 11. Class 5 pupils in Muthuthi pry school carried
out an experiment to compare drainage in
different soils. Which order shows the soil
that holds **more** water to the one which holds
less water?
A. Loam, sand, clay
B. Sand, loam, clay
C. Loam, clay, sand
D. Clay, loam, sand

12. The materials indicated in the diagram below shows that



- A. types of materials affects floating and sinking
 B. size affects floating and sinking
 C. shape affects floating and sinking
 D. weight affects floating and sinking
13. Pupils from Gitige primary school collected the following materials.
 (i) Pencils (iii) Maize cobs
 (ii) Maize stalks (iv) Round sticks
 What were they **LIKELY** to construct?
 A. the solar system
 B. rollers
 C. wheels
 D. anemometer
14. The following are signs of a deficiency disease
 (i) Swollen stomach
 (ii) Skin of the face is like of an old person
 (iii) The affected are underweight of their age
 Which deficiency disease is described above?
 A. Kwashiorkor B. Rickets
 C. Marasmus D. Anaemia
15. The following experiment was carried out by std 5 pupils in Gikindu primary school.



- They concluded that air
 A. has a vacuum
 B. has weight
 C. has mass
 D. occupies space
16. Which of the following **DOES NOT** describe a change of state?
 A. Crushing a stone to form a powder
 B. Boiling of water to steam
 C. Freezing of water to ice
 D. Melting of ice to water

17. Which one of the following is **NOT** part of the female reproductive system?
 A. Ovary B. Oviduct
 C. Urethra D. Uterus
18. The roughness and smoothness of soils is called
 A. Retention B. Capillary
 C. Texture D. Drainage
19. What happens in the small intestines?
 A. Absorption of food into the blood
 B. Absorption of mineral salts
 C. Absorption of water
 D. Storing of undigested food
20. The following plants can withstand the long spells of drought **EXCEPT**
 A. arrow root B. euphorbia
 C. baobab tree D. sisal
21. The following are **TRUE** about boys and girls in adolescents. Which one is **NOT**?
 A. Girls hip bone increase in size.
 B. Both grow pubic hair.
 C. Both boys and girls experience wet dreams.
 D. Boys break their voices.
22. The following are stages of HIV/AIDS. In which stage is one tested and found positive and no symptoms?
 A. Window B. Asymptomatic
 C. Symptomatic D. Full blown
23. Which one of the following is **NOT** part of the deciduous teeth?
 A. Molar B. Canine
 C. Incisor D. Premolar
24. The unit for measuring small quantities of mass is the
 A. centimeter B. tonne
 C. grams D. kilogram
25. Which one of the following is **CORRECT** about the construction of a beam balance?
 A. The arm must balance before fixing support.
 B. Fix the arm to the support then balance.
 C. The tins should be hanged before fixing the arm.
 D. Make a very wide hole to allow movement.

26. Which one of the following pairs of liquids will NOT mix when put together?

- A. Milk and water
- B. Alcohol and water
- C. Turpentine and water
- D. Petrol and paraffin

27. The type of soil erosion which eventually forms U and V ditches is known as?

- A. Rill erosion
- B. Gulley erosion
- C. Splash erosion
- D. Sheet erosion

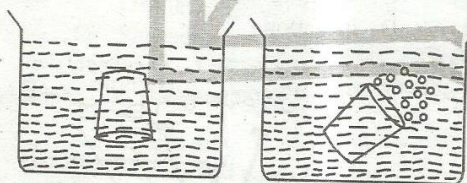
28. Which of the following planet is the fourth from the sun

- A. Jupiter
- B. Earth
- C. Mars
- D. Saturn

29. Which of the following groups of food are sources of proteins?

- A. Peas, fish and eggs
- B. Maize, rice and wheat
- C. Arrowroots, cabbage and milk
- D. Chapati, chicken and rice.

30. The following experiment can be used to explain



- A. water has air
- B. water occupies space
- C. water has bubbles
- D. air occupies spaces

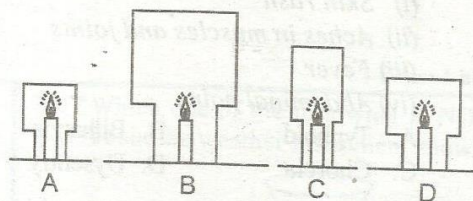
31. In which of the following parts of digestive system do the absorption of water and mineral salts take place?

- A. Stomach
- B. Large intestines
- C. Mouth
- D. Small intestines

32. Which one of the following is NOT a rotational method of grazing?

- A. Herding
- B. Strip grazing
- C. Paddockging
- D. Tethering

33. Four candles were lit. Jars of different sizes were placed over the burning candles as shown below:



Which candle burned for the longest period?

34. The following are ways of controlling weeds. Which one is the BEST in a large farm?

- A. Uprooting
- B. Use of chemicals
- C. Slashing
- D. Digging out

35. The following are symptoms and signs of a certain deficiency disease.

- (i) Paleness on the nail
- (ii) Feeling tired after a short walk
- (iii) Rapid heart beat
- (iv) Lack of appetite

Which disease is described above?

- A. marasmus
- B. kwashiokor
- C. anaemia
- D. rickets

36. John fitted a wood on handle on his cooking spoon. The wood

- A. made the spoon light
- B. made the spoon last longer
- C. serves as a good conductor
- D. serves as an insulator

37. The following are characteristics of a vertebrates. Which ones are for BOTH amphibians and reptiles?

- (i) Body covered with dry scales
- (ii) Lay eggs
- (iii) Are cold blooded
- (iv) Have moist skin
- (v) Live partly in water

- A. (ii), (iii)
- B. (i), (ii)
- C. (iii), (v)
- D. (iv), (i)

38. The following are signs and symptoms of a water borne disease. Name the disease

- (i) Skin rash
- (ii) Aches in muscles and joints
- (iii) Fever
- (iv) Abdominal pains

- A. Typhoid
- B. Bilharzia
- C. Cholera
- D. Dysentery

39. Which of the following is a natural way of lighting a house?

- A. Touch
- B. Electricity
- C. Using clean window panes
- D. Solar

40. The following pupils ate lunch in their school. Who ate a balanced diet?

- A. Max: rice + chicken + pawpaw
- B. Jane: maize + beans + peas
- C. Mary: Ugali + chips + vegetables
- D. Peter: Arrow root + juice + sweet potatoes

41. Name the tool drawn below and its function



- A. Jembe - digging soft soil
- B. Forked jembe - digging hard soil
- C. Rake - collecting leaves
- D. Shovel - scooping soil

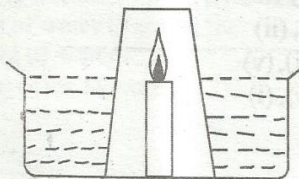
42. Std 5 pupils brought the following items to the class.

- (i) Three transparent bottles of the same size
- (ii) Three funnels
- (iii) Cotton wool
- (iv) Equal amount of water
- (v) Different soil

What were they investigating?

- A. Soil drainage
- B. Water in the soil
- C. Soil capillarity
- D. Air in the soil

43. Std 6 pupils did the experiment shown below. What was their observation after the candle went off? The water



- A. filled up the glass.
- B. in the bowl increased.
- C. in both the bowl and the glass decreased.
- D. rose in the glass up to a fifth.

44. People are **LIKELY** to encourage soil erosion when they

- A. plant grass
- B. cut down trees
- C. add manure to the soil
- D. make terraces on sloppy grounds

45. Excess medicines that remain should be

- A. given to neighbours.
- B. destroyed or be thrown in a pit latrine.
- C. given to relatives.
- D. kept for later use.

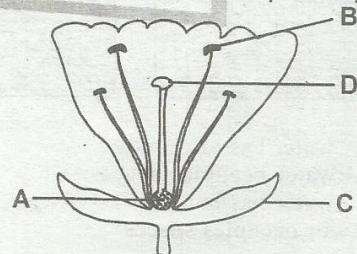
46. A person suffering from cholera loses a lot of water through

- A. diarrhoea and vomiting
- B. diarrhoea and sweating
- C. sweating and vomiting
- D. diarrhoea and tears

47. The following are uses of water in the farm **EXCEPT**

- A. watering animals
- B. washing farm tools
- C. washing machines
- D. irrigation

48. Name parts A, B, C, D respectively



- A. ovules, anther, sepals, stigma
- B. sepals, stigma, anther, ovules
- C. stigma, anther, ovules, sepals
- D. anther, stigma, sepals, ovules

49. The following are methods of preserving food. Which ones are **BOTH** traditional and modern?

- (i) Smoking
 - (ii) Canning
 - (iii) Drying
 - (iv) Use of honey
 - (v) Use of low temperature
- A. (iii), (v)
 - B. (i), (ii)
 - C. (ii), (iii)
 - D. (iii), (iv)

50. Which type of crop is matched **CORRECTLY** with its type of root?

- A. Coconut - fibrous
- B. Maize - tap
- C. Mango - fibrous
- D. Acacia - fibrous