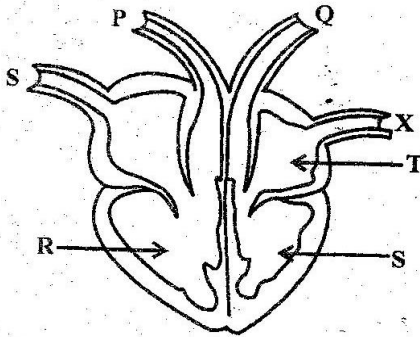


SCIENCE

1. In which of the following ways is water used for recreation ?
- A. Making fountains
 - B. Mixing chemicals
 - C. Sport fishing
 - D. Bathing

2. The diagram below represents the circulatory system



Which pair of blood vessels carries oxygenated blood ?

- A. X and P
- B. R and P
- C. S and Q
- D. Q and X

3. Plants depends one each other for the following ways **except** ?

- A. Support
- B. Shade
- C. Shelter
- D. Habitat

4. Below are signs of a certain Sexually Transmitted Infection

- (i) Pain when passing out urine
- (ii) Swelling of the testicles
- (iii) Yellowish discharge from the penis

Which Sexually Transmitted Infection has the above signs ?

- A. Syphilis
- B. Gonorrhoea
- C. Chancroid
- D. HIV/AIDS

5. Which one of the following is the second stage in the birth process?

- A. Contraction of the uterine walls
- B. Dilation of the cervix
- C. Expulsion of the baby
- D. Breaking of the amnion sac

6. The main reason for spreading murrum on roads is to :-

- A. make the road last longer
- B. increase friction between the tyre and the road
- C. reduce friction between the tyre and the road
- D. prevent the cars from getting stuck

7. Which component of blood prevent loss of blood after an injury ?

- A. White blood cells
- B. Red cells
- C. Plasma
- D. Platelets

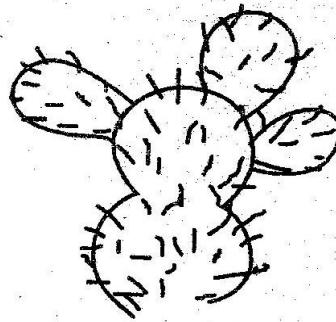
8. A wind pollinated flower will :-

- A. have large petals
- B. have small anthers
- C. produce fewer sticky pollen grains
- D. produce light pollen grains

9. Which among the following plant pests cut the stems of seedlings?

- A. Stalkborers
- B. Cutworms
- C. Aphids
- D. Weevils

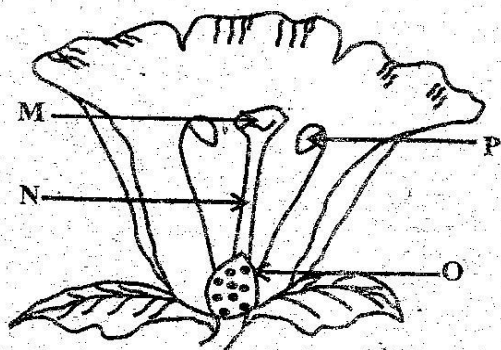
10. The diagram below shows a type of plant adapted to a certain environment



The plant is adapted from loosing water by :-

- A. having deep wide spread roots
- B. having flexible stems
- C. have thorns instead of leaves
- D. having thin waxy cuticle

23. The diagram below represents parts of a flower



Fertilization take place in the part marked ?

- A. P
- B. N
- C. M
- D. O

24. The transfer of heat that do not require any media is known as :-

- A. conduction
- B. convection
- C. radiation
- D. convection and radiation

25. The following are all characteristics blood vessels. Which one is true from all veins only?

- A. carries deoxygenated blood
- B. carries oxygenated blood
- C. carries blood away from the heart
- D. carries blood towards the heart

26. Which of the following animals is a herbivorous animal?

- A. Leopard
- B. Cat
- C. Zebra
- D. Lion

27. The following are measured in newtons except?

- A. Friction
- B. Mass
- C. Weight
- D. Force

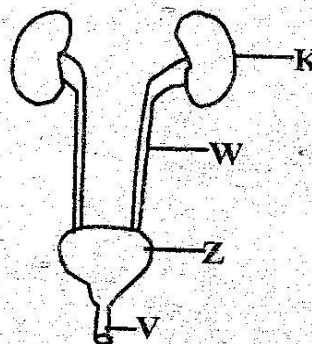
28. Which one of the following immunisable diseases is prevented using a vaccine different from others ?

- A. Measles
- B. Tetanus
- C. Whooping cough
- D. Diptheria

29. Which one of the following need not to be the same when comparing capillarity of different types of soil ?

- A. Amount of soil
- B. Size of cotton wool
- C. Size of the tube
- D. Size of soil particles

30. The diagram below represents a certain body organ



Name the parts labelled K, Z, W, V

- | K | Z | W | V |
|-----------------|---------|---------|---------|
| A. Left kidney | bladder | ureter | urethra |
| B. Right kidney | bladder | urethra | ureter |
| C. Bladder | kidney | ureter | urethra |
| D. Right kidney | bladder | ureter | urethra |

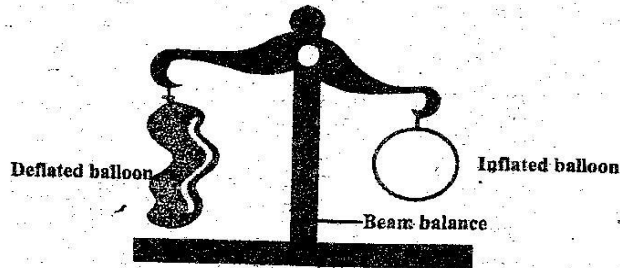
31. Which of the following shows the sixth and fourth planets from the sun respectively?

- A. Saturn and Mars
- B. Jupiter and Mars
- C. Uranus and Earth
- D. Mars and Saturn

32. Which of the following is the least affected when sample of soil is heated?
- A. Living organisms
 - B. Organic matter
 - C. Minerals salts
 - D. Water

33. The following are ways of controlling HIV and AIDS through mass education except ?
- A. Story telling
 - B. Public lectures
 - C. Use of newspapers
 - D. Use of dramas

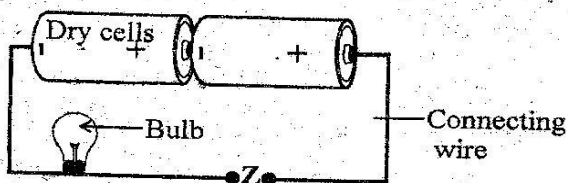
34. Std 5 pupils did an experiment shown below



From the experiment, they learnt that

- A. air has weight
- B. air occupies space
- C. air exerts pressure
- D. air has definite shape

35. Std 7 pupils carried out an experiment as shown below



Which of the materials given below, when placed at point Z will make the bulb to light ?

- A. Wax
- B. Pencil lead
- C. Sisal string
- D. Dry piece of wood

36. The following shows a description of a certain type of tooth

(i) *Used in grinding food*

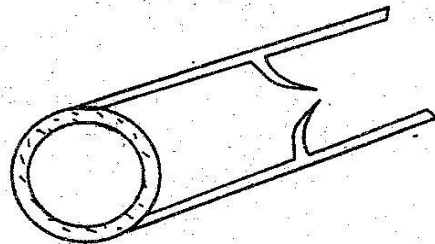
(ii) *Has two roots*

(iii) *Is the last to be shed*

The type of tooth with the above description is :-

- A. canine
- B. molar
- C. incisor
- D. pre-molar

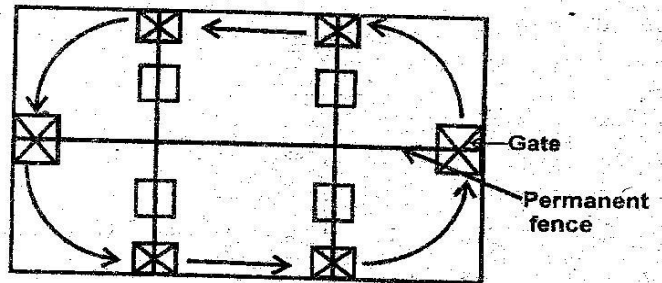
37. The diagram below shows a certain blood vessel



The above blood vessel is likely to be

- A. artery
- B. capillary
- C. vein
- D. platelet

38. Mr. Kamau constructed the following structure in his farm



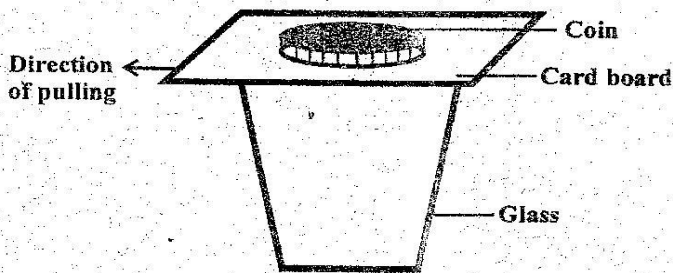
Which method of grazing did he use on his farm?

- A. Strip grazing
- B. Tethering
- C. Paddocking
- D. Stall feeding

39. The following are functions of the amniotic fluid except one. Which is it ?

- A. Nourishes the foetus
- B. Keeps the foetus warm
- C. Lubricates the foetus
- D. Protects the foetus from physical injury

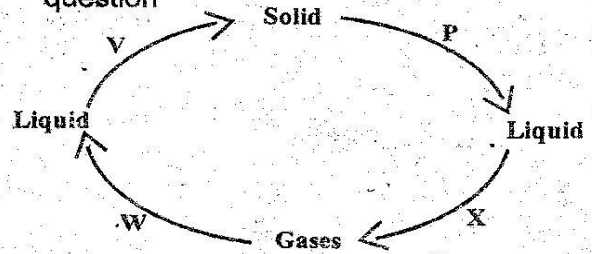
40. Std 5 pupils pulled a cardboard with a coin as shown below



How did the coin behave after pulling?

- A. It remained on the cardboard
 B. It fell into the glass
 C. It fell behind the glass
 D. It moved with the cardboard
41. Which of the following diseases are people living in swampy areas most likely to be infected with
 A. Typhoid and bilharzia
 B. Cholera and typhoid
 C. Malaria and bilharzia
 D. Cholera and malaria
42. Std 5 pupils wanted to construct a windvane. Which of the following materials was **not** required?
 A. Nail
 B. Pieces of wood
 C. Metal sheet
 D. Polythene bag
43. Below are effects of drug abuse
 (i) *Coma*
 (ii) *Truancy*
 (iii) *Mental conflicts*
 (iv) *Withdrawal symptoms*
 (v) *Rape*
 (vi) *Fits*
- Which group of these effects above consist of health effects only?
 A. i, ii, iv
 B. ii, iii, v
 C. i, iv, v
 D. i, iv, vi

44. Use the diagram below to answer the following question



Which two of the labelled processes take place as a result of increase in temperature?

- A. V and P
 B. W and V
 C. X and W
 D. X and P
45. The main reason for including food rich in fibre in the diet is because
 A. it adds nutrients to the body
 B. it helps in protecting the body against diseases
 C. it helps in getting rid of the undigested food
 D. it helps in digestion of food
46. Which of the following is an adaptation of plants found in wet areas?
 A. They have stems which can store water.
 B. They have deep and wide spread root system.
 C. They shed leaves during dry season.
 D. They have broad large flat leaves
47. The following are modern methods of preserving food **except** one. Which one?
 A. Drying
 B. Freezing
 C. Use of honey
 D. Canning
48. The following are signs of unhealthy crops **except**?
 A. Reduced quality produce
 B. Stunted growth
 C. Curled leaves
 D. Discolouration on growing leaves
49. The following are advantages of friction **except**?
 A. Produces heat
 B. Prevents skidding
 C. Wear out things
 D. Causes braking
50. Which of the following sources of electricity pollutes the environment?
 A. Car battery
 B. Petrol generator
 C. Solar panel
 D. Dry cell