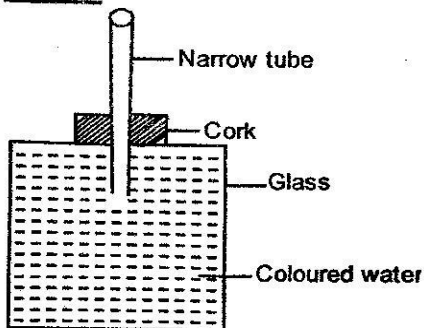


1. Which of the following is **false** about arteries?
 - A. Have thick walls
 - B. Have pulse
 - C. Blood flows under high pressure
 - D. Carry blood to the heart
2. Which one of the following consists of minor components of environment **only**?
 - A. Heat, sound, light
 - B. Water, heat, air
 - C. Water, air, soil
 - D. Light, animals, plants
3. The face of friction might be useful in the following activities **except** in
 - A. drawing
 - B. walking
 - C. riding a bicycle
 - D. using a pulley
4. Std 4 pupils collected the following materials during their Science lesson
 - i) Soil
 - ii) Test tubes
 - iii) Candles
 They were **likely** investigating
 - A. water in the soil
 - B. humus in the soil
 - C. air in the soil
 - D. living organisms in the soil

The diagram below is used to demonstrate a certain property of matter



5. A drop in the level of water in the narrow tube was as a result of
 - A. expansion of the liquid
 - B. expansion of the air

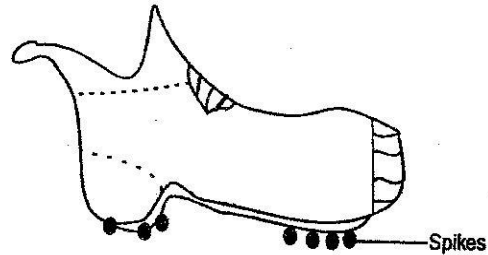
- C. contraction of the air
- D. contraction of the liquid

6. Which one of the following pairs of nutrients constitutes most essential in commercial animal feeds?
 - A. Protein and vitamins
 - B. Minerals and roughages
 - C. Fibre and carbohydrates
 - D. Water and proteins

Std 5 pupils wanted to make a rain gauge. They collected the following materials.

- i) Measuring jar
 - ii) Stopper
 - iii) Tin can
 - iv) Funnel
 - v) Thin tube
7. Which of the following items collected were **not** necessary for their assembly?

A. (ii), (iv)	B. (iii), (v)
C. (i), (iv)	D. (ii) (v)
 8. An athlete uses the type of shoe shown below. Spikes were fitted to help the runner by



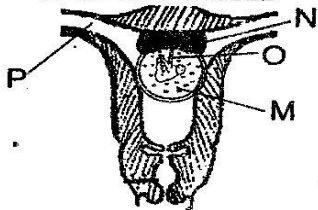
- A. increasing stepping area
 - B. decreasing friction
 - C. allowing breaking
 - D. holding firmly on track
9. Which one of the following is an artificial method of lighting a house?
 - A. Windows
 - B. Bulbs that use H.E.P electricity
 - C. Translucent roofs
 - D. Large doors

10. Which one of the following functions is performed by all stems?
 A. Transportation of food and minerals
 B. Food manufacturing
 C. Protection of the plant
 D. Storage of food and water

11. Which one of the following is true of animals? They all
 A. give birth to live young ones
 B. have mammary glands
 C. locomote
 D. live on land

12. Which pair contains drugs that are legalised in Kenya?
 A. Bhang and alcohol
 B. Heroin and khat
 C. Khat and tobacco
 D. Cocaine and alcohol

Use the diagram below to answer questions 13 and 14



13. Which one of the following is the main function of the part marked M?
 A. Removal of waste products from the foetus to the mother.
 B. Acting as shock absorbers
 C. Nourishing the foetus
 D. Facilitating exchange of oxygen from the mother to the foetus.

14. Which part in the diagram above carries oxygenated blood and nutrients from the placenta to the foetus?

A. M B. P
 C. O D. N

15. Which one of the following pairs consists of parasites that are found in the small intestines?
 A. Liverflukes and tapeworms
 B. Lungworms and roundworms
 C. Tapeworms and round worms
 D. Lungworms and liverflukes

16. Which of the following is the last stage during the birth processes?
 A. Tying and cutting of umbilical cord
 B. Contraction of uterine walls

- C. Amniotic breaks and releases the amniotic fluid
 D. Release of the afterbirth

17. Which vaccine is given to a child orally and on the left lower arm respectively?
 A. B.C.G, polio
 B. Yellow fever, DPT
 C. Polio, B.C.G
 D. DPT, measles

18. The following measures were taken to prevent a certain disease
 i) Proper disposal of waste
 ii) Keep toilets and latrines clean
 iii) Wash fruits thoroughly before eating
 iv) Drain stagnant water
 Which of the three can best prevent typhoid?

A. (i) B. (ii)
 C. (iii) D. (iv)

19. Which one of the following is not a safety measure while handling chemicals at home?
 A. Store chemicals out of children's reach
 B. Store chemicals on the table not the floor
 C. Do not put chemicals in soda bottles
 D. Store chemicals in a locked cabinet

20. Which one of the following standard weights can be used on a weighing scale to measure one kilogram of meat?
 A. Two 500g standard weights
 B. Two 1kg standard weights
 C. Two 100g standard weights
 D. Two 200g standard weights

21. Roots of a plant do all the following except
 A. storage of food
 B. absorption of mineral salts
 C. making of food
 D. support the plant in the soil

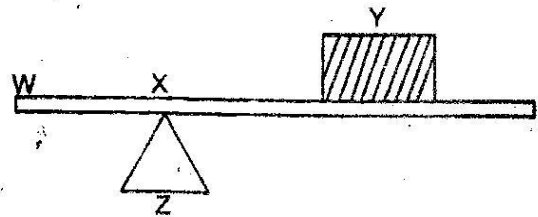
22. Pupils grouped materials as follows; Which pair of materials were correctly grouped?

<u>Good conductors of heat</u>	<u>Poor conductors of heat</u>
A. Copper	wood
B. Plastic	glass
C. Aluminium	iron
D. Glass	wood

23. The main reason why the government has banned the use of plastic bags is because plastic bags
- are expensive to import
 - are difficult to recycle
 - are a threat to the soil
 - pollute air and water
24. Which of the following are the third, fifth and seventh planets from the sun respectively?
- Earth, Jupiter, Uranus
 - Mars, Uranus, Neptune
 - Earth, Saturn, Uranus
 - Mercury, Jupiter, Neptune
25. Soil that cracks easily when dry is known for all the following characteristics **except**
- good drainage
 - fine soil particles
 - very sticky when wet
 - easily rolls into a ribbon
26. Which one of the following is **not** in the excretory system?
- | | |
|------------|----------|
| A. Kidneys | B. Anus |
| C. Skin | D. Lungs |
27. Curative drugs are **mainly** taken to
- prevent people against diseases
 - treat known diseases
 - protect children against childhood diseases
 - stimulate people
28. Which one of the following is **not** part of the solar system?
- | | |
|------------|----------|
| A. Planets | B. Moon |
| C. Sun | D. Stars |
29. Repairing leaking taps specifically helps in
- re-using water well
 - harvesting rain water
 - using water sparingly
 - recycling water
30. Which of the following is **not** a use of translucent materials? They are used in making
- sky lights
 - bathroom window panes
 - vehicle windscreens
 - ambulance window panes

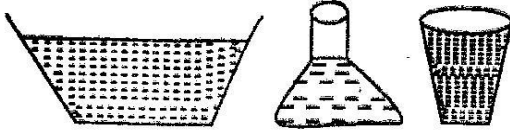
31. Which one of the following is the strongest form of static electricity?
- Lightning
 - Electric shock
 - Charged balloons
 - Hydroelectric power

The diagram below represents a simple machine



32. Which of the following position labelled W, X, Y and Z represents the load distance?
- | | |
|---------|---------|
| A. Y, Z | B. X, Y |
| C. X, Z | D. W, Z |
33. Which one of the following changes takes place during adolescence in **girls only**?
- Releasing of sex cells
 - Fast body growth
 - Growth of hair in pubic area
 - Widening of hips
- Study the food chain below**
- Plants → mouse → snake → hawk*
34. What is **not** likely to happen if all snakes die?
- Plants will increase
 - Hawk will eat mouse
 - Hawk will starve
 - Mouse will increase
35. Which one of the following lists **does not** contain foodstuffs that provide the same nutrients?
- Maize, wheat, rice, millet
 - Meat, eggs, beans, peas
 - Beans, peas, groundnuts, blackbeans
 - Milk, eggs, rice, mutton
36. Pressure in liquids can be increased by
- changing depth
 - lifting the container
 - adding water
 - enlarging the container

Std 5 pupils poured water into different containers as shown in the following diagrams



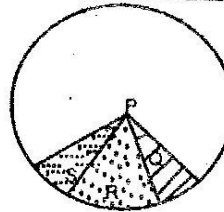
37. Which one of the following is true about what the pupils were investigating?
 A. Density in liquids depends on the container
 B. Liquids take the shape of the container
 C. Pressure in liquids changes with the container
 D. Mass of the material changes with the container
38. Which one of the following behaviours of light would make an object in water appear bigger than it really is?
 A. Splitting of light
 B. Dispersion of light
 C. Refraction of light
 D. Reflection of light
39. Which one of the following is not a source of useful electricity?
 A. Hydroelectric generators
 B. Torch cell
 C. Geothermal generators
 D. Lightning
40. Which one of the following can not be done using forces?
 A. Slowing down motion
 B. Speeding up motion
 C. Determining motion
 D. Starting motion
41. The ability of two liquids to mix depends on
 A. density
 B. amount
 C. colour
 D. pressure

Below are characteristics of a certain animal

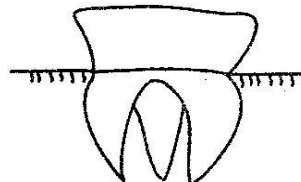
- i) It lays eggs
 ii) Its body is covered with scales
 iii) It breathes through lungs
 iv) Its body temperature varies with that of the surrounding
42. Which of the following animals can not be put in the same group with the animal having the characteristics above?
 A. Snake
 B. Salamander
 C. Gecko
 D. Crocodile
43. Which of the following is the main advantage of using organic mulch on a farm? To
 A. prevent soil erosion
 B. prevent weeds from growing by suffocation
 C. conserve soil moisture
 D. enrich the soil with nutrients

44. All the following are immunisable diseases except
 A. polio
 B. tetanus
 C. measles
 D. malaria
45. Which one of the following is incorrect about HIV and AIDS?
 A. It is caused by a virus
 B. It can be spread by insect bites
 C. It is a fatal disease
 D. Infects children and adults

The diagram below shows the composition of air



46. The gas marked S is used in
 A. breathing
 B. fire extinguishers
 C. electric bulbs
 D. germination
47. All the following are precautionary measures during lightning. Which one is not?
 A. Not leaning on walls
 B. Avoid walking bare foot
 C. Not holding metallic objects
 D. Avoid wearing a red cap
48. Weight is a force. It is measured using a
 A. spring balance
 B. beam balance
 C. weighing balance
 D. see saw
49. When preparing compost manure, what is the main purpose of soil layer? To
 A. add nutrients
 B. prevent water loss
 C. introduce bacteria
 D. speed up decomposition
50. The tooth shown below is used for



- A. crushing and tearing
 B. holding and gripping
 C. grinding and biting
 D. chewing and crushing