

# CLASS 7 MID TERM 2 2020

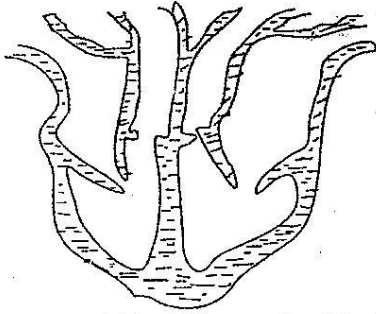
## SCIENCE

### READ THESE INSTRUCTIONS CAREFULLY

- Use an ordinary pencil only
- Make sure that you have written on the answer sheet:-  
I. YOUR NAME

II. NAME OF YOUR SCHOOL

- The diagram below shows an organ used in the blood circulation in a human body. Which one of the following does not take place in the organ drawn below.



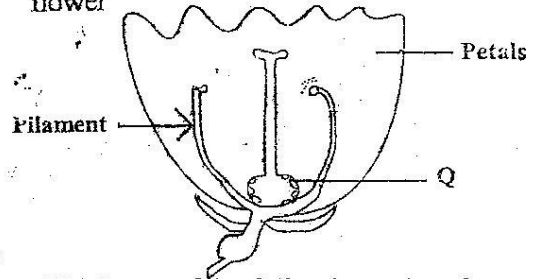
- Oxygenated blood is received by the right auricle
- Deoxygenated blood leaves the organ from the right ventricle
- Deoxygenated blood enters the organ from the lungs.
- Valves prevent the backflow of blood to the auricles.

### Use the following information to answer the question that follow:-

- Mercy - Ate spinach, meat and an egg  
 Antony - Ate piece of white bread and a piece of cake  
 Edward - Ate an orange, banana and a piece of water melon.  
 Elvis - Ate pieces of raw carrots, mixed with raw pepper and pieces of onions.

- Which one of the following is true about the information above?
  - Mercy ate foods that were first digested in the mouth.
  - Antony ate foods that were first digested in the mouth
  - Edward ate foods that were first digested in the ileum.
  - Elvis ate foods that were first digested in the colon.
- Which one of the following is not a sign of AIDS
  - Diarrhoea
  - Sunken eyes
  - Hair falling off
  - Stiff neck

- The diagram below shows some parts of a flower



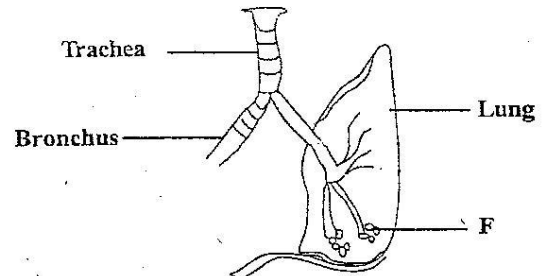
Which one of the following pairs of processes takes place to form the part marked Q directly

- fertilization and photosynthesis
- Pollination and transpiration
- Pollination and fertilization
- Fertilization and photosynthesis

- Which one of the following fungi is useful to human beings?

- Yeast
- Ringworm
- Dandruff
- Puffball

- The diagram below shows a section of the breathing system



Which one of the following process takes place in the part marked F in order for oxygen to enter the body?

- Circulation of gases
- Separation of gases
- Diffusion of gases
- Inhaling of gases

- Which one of the following plants has roots similar to the type found in carrots?

- Onion
- Sweet potato
- Irish potato
- Arrow root

- Which one of the following statements is not true?

- All herbal medicine are harmful.
- An overdose of medicine may kill a patient.
- Drugs should be kept out of the children's reach.
- A drug can be medicine for one person and poison to the other.

Which one of the following disease is blood noticed especially when passing out the last drops?

- A. Cholera  
B. Typhoid  
C. Bilharzia  
D. Dysentery

Three of the following are examples of rotational methods of grazing EXCEPT?

- A. Paddocking  
B. Strip  
C. Herding  
D. Tethering

Crop rotation is a method of controlling crop pests by

- A. Trapping them  
B. Scaring them  
C. Starving them  
D. Feeding them

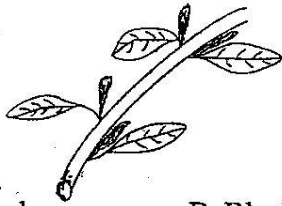
Which one of the following livestock parasite is controlled by spraying or dipping the animal?

- A. Tapeworm  
B. Liverfluke  
C. Ticks  
D. Roundworms

Which one of the following manures is not a type of straight fertilizers.

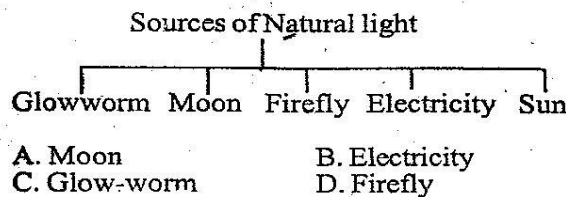
- A. Nitrogen fertilizers  
B. Potassium fertilizers  
C. Phosphorous fertilizers  
D. Single superphosphate

The diagram below shows a type of a weed called



- A. Pigweed  
B. Blackjack  
C. Wandering jew  
D. Oxalis

The chart below shows some sources of natural light. Which one is wrongly represented?



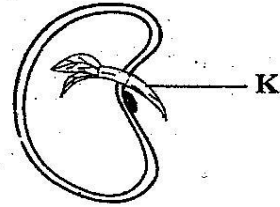
The following are emotional characteristics of adolescents. Which one is not?

- A. They are always shy  
B. They want freedom  
C. They increase in weight  
D. They become angry very quickly

Which one of the following groups consists of diseases that are communicable

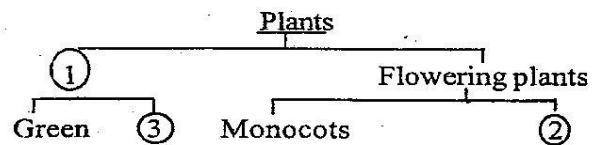
- A. Tetanus, diphtheria, tuberculosis  
B. Polio, whooping cough, malaria  
C. Flu, marasmus, measles  
D. Malaria, tuberculosis, measles

The diagram below shows a germinating soya bean. Which one of the following is true about the part marked K?



- A. The part marked K is the embryo  
B. The part marked K shoots out first.  
C. The part marked K stores food for the germinating seed.  
D. The part marked K is the plumule.

Use the following chart on classification of plants to answer question 19:-



Which one of the following will complete the parts marked 1, 2 and 3 respectively?

- A. Non-flowering, dicots, non green  
B. Green, non-flowering, flowering  
C. Dicots, monocots, green  
D. Non-green, dicots, non-flowering

Which one of the following is the main use of charcoal in water purification?

- A. To absorb any dirt  
B. To absorb any colour  
C. To absorb heat from water.  
D. To hold water for a longer time.

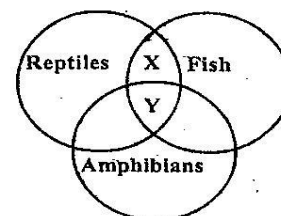
Convection is a method of heat transfer which is mainly used in

- A. Solids only  
B. Liquids only  
C. Gases only  
D. Liquids and gases

Which one of the following is not a group of living organisms in a food chain?

- A. Antelopes and gazelles  
B. Producers  
C. Primary consumers  
D. Tertiary consumers

The chart below shows the characteristics of reptiles, fish and amphibians. What do X and Y represent?

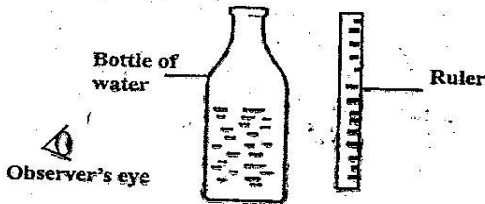


- X**  
 A. Cold blooded  
 B. Scales  
 C. Scales  
 D. Live in water

- Y**  
 Breath by lungs  
 Warm blooded  
 Cold blooded  
 Scales

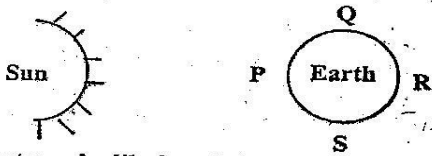
24. The percentage of the component of air that is fixed by bacteria in root nodules to make nutrients for the plant is  
 A. 0.03%                      B. 0.97%  
 C. 21%                         D. 78%

25. A ruler was placed behind a bottle half filled with water as shown in the diagram



- The part of the ruler below the level of water appeared to be larger in size than the part above. This happened due to  
 A. Dispersion of light  
 B. Refraction of light  
 C. Reflection of light  
 D. Deffraction of light

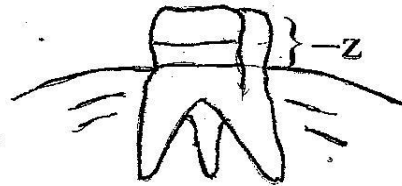
26. Mohammed observed the sky at night at different times and drew the diagram below



What was he likely to have marked at the points marked Q,R,S,T respectively?

- A. Phases of the sun  
 B. Phases of the moon  
 C. Phases of the earth  
 D. The orbit of the earth.
27. Which one of the following is true about immunization of the baby?  
 A. DPT vaccine prevents diptheria, whooping cough and tetanus.  
 B. BCG vaccine prevents polio and whooping cough  
 C. Polio and tuberculosis are immunized at 10 weeks  
 D. DPT vaccine prevent diptheria, whooping cough and tuberculosis.
28. Which one of the following is the colour of deoxygenated blood?  
 A. Pale red  
 B. Bright red  
 C. Dark red  
 D. Pure red

29. The diagram below shows a type of a tooth



The part marked Z is called

- A. ridge                              B. root  
 C. crown                             D. cement

30. The following are four stages that aids patient passes through:-

- i) Incubation stage  
 ii) Full blown AIDS  
 iii) Symptomatic stage  
 iv) Window stage  
 v) Asymptomatic stage

Which one of the following is the correct order in which the stages follow respectively.

- A. (i), (ii), (iii), (v), (iv)  
 B. (i), (iv), (iii), (v), (ii)  
 C. (iv), (i), (v), (iii), (ii)  
 D. (i), (iv), (v), (iii), (ii)

31. The following are characteristics of a certain type of cloud

- i) White in colour  
 ii) Looks like bundles of cotton wool.  
 iii) Flat at the bottom  
 iv) Dome shaped at the top

Which one of the following is the most likely type of cloud described above?

- A. Cumulus clouds              B. Nimbus clouds  
 C. Stratus clouds                D. Cirrus clouds

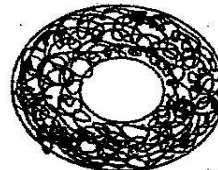
32. Which one of the following would most pollute the environment?

- A. Damping used oil in the river.  
 B. Throwing wood ash into the bushes.  
 C. Throwing saw dust into a river.  
 D. Burning waste papers.

33. Which one of the following gases is the least in quantity?

- A. Oxygen                            B. Carbon-dioxide  
 C. Rare gases                        D. Nitrogen

34. The diagram below shows a type of a blood vessel called?



- A. Vein                                B. Artery  
 C. Capillary                         D. Pulmonary vein

35. Which one of the following mixtures can be separated by evaporation?

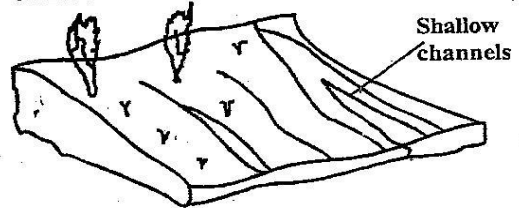
- A. A mixture of a gas and a liquid.

- B. A mixture of two solids
- C. A mixture of two gases
- D. A mixture of a solid and a liquid

36. In which one of the following activities is friction a disadvantage?
- A. Stopping a moving bicycle suddenly.
  - B. Pushing a wheelbarrow on a rough road.
  - C. Climbing a steep hillside.
  - D. Using a plane to smoothen a piece of wood.
37. Which one of the following reasons best explains why a raingauge is placed under the ground?
- A. To allow water to get into the raingauge easily.
  - B. To prevent it from being damaged by rain.
  - C. To prevent collected water from evaporating.
  - D. To prevent it from rushing.
38. A windsock is made using black and white straps mainly to
- A. Make it more visible
  - B. Decorate it for tourists.
  - C. Make it water resistant.
  - D. Make it wind resistant
39. Which one of the following is the best type of soil for agricultural activities?
- A. Sand
  - B. Loam
  - C. Clay
  - D. Sand and loam
40. An adolescent girl had the following symptoms
- i) Headache
  - ii) Dizziness
  - iii) Tiredness
  - iv) Pale nails
- Which nutritional deficiency disease was she most likely suffering from?
- A. Marasmus
  - B. Scurvy
  - C. Goitre
  - D. Anaemia
41. The handles of many cooking utensils are made of wood mainly because
- A. Wood is a poor conductors of heat
  - B. Wood is a good conductor of heat
  - C. Wood utensils cook faster
  - D. Wooden utensils are beautiful.
42. Which one of the following simple machine shows a pair which can be used in balancing
- A. Seesaw and beam balance.
  - B. Bean balance and bottle opener
  - C. Seesaw and ruler
  - D. Bottle opener and wheelbarrow
43. A farmer noticed that one of his cows was eating objects such as clothes and soil. What action should the farmer do to correct the behaviour?
- A. give the cow more feed.
  - B. give the cow feeds. which are rich in proteins

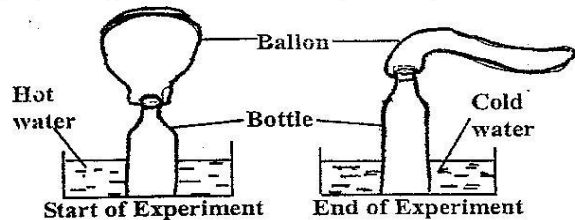
- C. Separate the cow from others.
- D. give the cow mineral salts.

44. Vegetation cover on land reduces soil erosion by
- A. slowing the movement of running water.
  - B. Increasing soil fertility.
  - C. Minimizing rainfall
  - D. Improving soil texture
45. The diagram below shows a type of soil erosion called.



- A. Sheet erosion
- B. Rill erosion
- C. Spatter erosion
- D. Gully erosion

46. From the following list of animals, choose the one that consists of mammals only?
- A. Bat, squirrel, tortoise, porcupine
  - B. Whale, rabbit, bat, kangaroo
  - C. Whale, hedgehog, owl, salamander
  - D. Elephant, python, lion, antelope
47. Which one of the following crops is most suitable for use as a cover crop?
- A. Beans
  - B. Cabbages
  - C. Sweet potatoes
  - D. Irish potato
48. An experiment was set up as shown below



- The experiment was used to demonstrate that
- A. Air expands when heated.
  - B. Air increases in weight when heated.
  - C. Air contracts when cooled
  - D. Air increases in volume when cooled.

49. A farmer would like to give medicine in solid form to cattle through the mouth to control internal parasites. Which one of the following equipment is the right one to use?
- A. Bolus gun
  - B. Syringe
  - C. Drenching gun
  - D. Bottle
50. Which one of the following livestock feeds is a concentrate?
- A. Bran
  - B. Lucerne
  - C. Silage
  - D. Hay