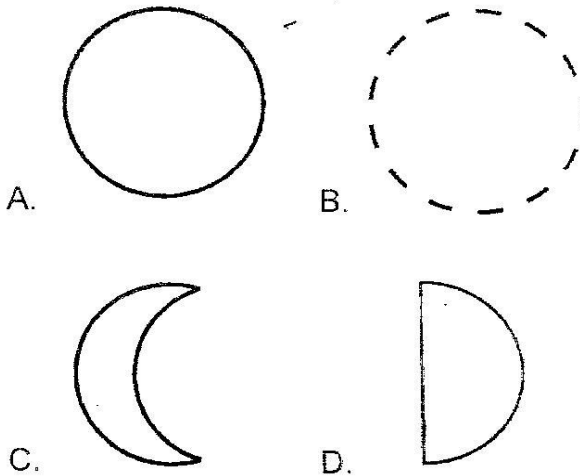


CLASS 5 MID TERM 2 2020

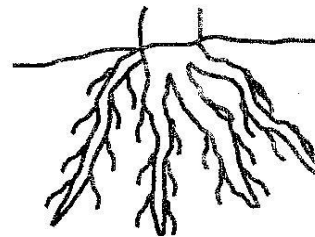
SCIENCE

- Which one of these statements about medicines is **not** true?  
A. Check the expiry date.  
B. Read the instructions carefully.  
C. You can take somebody else's medicine if sick with the same disease.  
D. Take medicines only when sick.
- HIV virus is **not** found in  
A. breast milk.  
B. reproduction fluids.  
C. blood.  
D. urine.
- The stage of HIV infections where a person looks healthy and tests negative is  
A. window stage  
B. asymptomatic  
C. symptomatic stage  
D. full blown AIDS.
- Which one of the following phases of the moon **cannot** be seen from the earth?



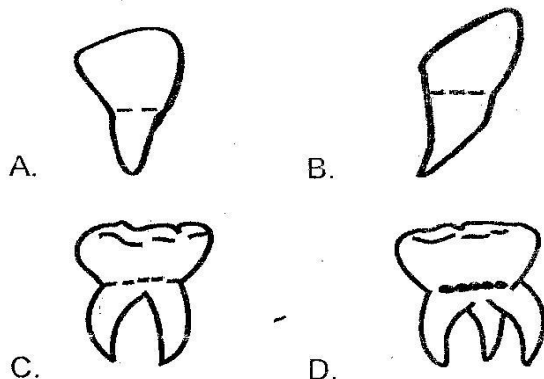
- The following are sources of water except  
A. oceans.  
B. pipes.  
C. rainfall.  
D. lakes.

- Which one of the following is **not** part of the breathing system?  
A. Trachea. B. Diaphragm.  
C. Gullet. D. Bronchioles.
- Eggs, beans and milk are all sources of  
A. energy giving.  
B. protective food.  
C. minerals and vitamins.  
D. proteins.
- Which one of the following factors makes a thumb pin to sink while a log of wood float on water?  
A. Size. B. Shape.  
C. Materials. D. Mass.
- Which one of the following green plants does **not** produce flowers?  
A. Cactus. B. Grass.  
C. Sugarcane. D. Fern.
- The respiratory gases are  
A. carbon dioxide and oxygen.  
B. oxygen and nitrogen.  
C. oxygen and rare gases.  
D. carbon dioxide and nitrogen.
- Which one of the following plants has the type of the root drawn below?



- Peas. B. Rice.  
C. Carrot. D. Avocado
- The process in which green plants make their own food is called  
A. photosynthesis. B. transpiration.  
C. chlorophyll. D. absorption.

13. The instrument used to measure the temperature is  
 A. thermometer                      B. raingauge  
 C. windsock                          D. windvane
14. HIV and AIDS can **not** be spread through  
 A. blood transfusion.  
 B. breast milk.  
 C. mosquito bite.  
 D. sharing piercing tools.
15. Three of the animals below are invertebrates **except**  
 A. snail.                                B. earthworm.  
 C. locust.                                D. tortoise.
16. Which type of soil feels smooth when felt between fingers?  
 A. Clay soil.                          B. Loam soil.  
 C. Sandy soil.                        D. Silt soil.
17. Which tooth below is **not** part of the first set of teeth?



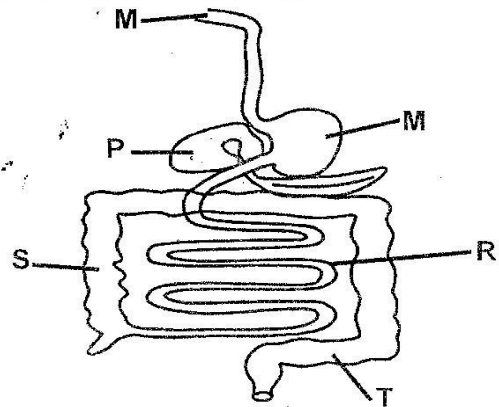
18. The **least** effective method of weed control is  
 A. digging out.                      B. use of chemicals.  
 C. slashing.                          D. uprooting.
19. Below are characteristics of certain clouds:  
 (i) **Mountainous.**  
 (ii) **Found high in the sky.**  
 (iii) **Indicate fair weather.**

The clouds are **likely** to be

- A. cumulus.                          B. nimbus.  
 C. cirrus.                              D. stratus.

20. Which electric device below produces sound and light  
 A. television.                        B. radio.  
 C. electricity kettle.                D. electric cooker.

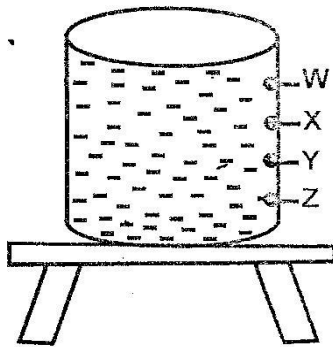
**Below is a diagram of the human digestive system. Use it to answer questions 21 and 22.**



21. Which letters show parts that produce digestive juices?  
 A. M, N and S  
 B. N, P and T  
 C. R, T and M  
 D. R, M and P
22. Absorption of water takes place in the part labelled  
 A. M                                      B. R  
 C. S                                      D. N
23. The part of diet that prevent constipation is  
 A. water.  
 B. roughages.  
 C. carbohydrates.  
 D. fats and oils.
24. You should always wear \_\_\_\_\_ when handling a bleeding person.  
 A. gumboots                          B. socks  
 C. goggles                              D. gloves
25. Why is it advised to spray chemicals in the direction of the wind?  
 A. To avoid inhaling the chemicals.  
 B. To prevent chemicals contract with our skin.  
 C. Increase the spread of the chemicals.  
 D. To reduce the waste of chemicals.

26. Which one of the following is **not** a function of the leaves?
- Absorption of minerals.
  - Transpirations.
  - Storage.
  - Exchange of gases.
27. The part of the plant that becomes a fruit is the
- flower.
  - root.
  - leaves.
  - stem.
28. In animals the term **warm-blooded** means
- varying body temperature.
  - constant body temperature.
  - living in one environment with constant temperature.
  - hot blood.
29. It is true to say that, all mammals
- give birth.
  - lay eggs.
  - are warm-blooded.
  - live on land.

30. The set-up below was used by Grade 4 pupils.

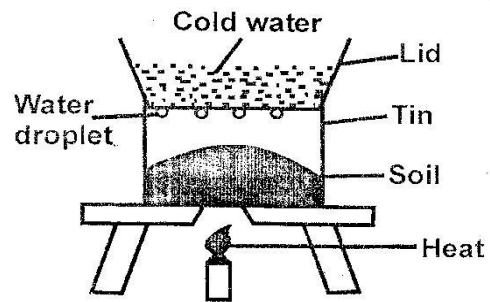


The pressure was strongest at hole

- W
- X
- Y
- Z

31. Which one of the following takes the least space?
- 1kg of salt.
  - 1kg of cotton wool.
  - 1kg of feathers.
  - 1kg of papers.

32. Which animal protects itself by stinging?
- Snail.
  - Mosquito.
  - Wasp.
  - Snake.
33. Fish breathe through
- lungs
  - gills
  - scales
  - spiracles
34. Irish potatoes store food in
- leaves
  - roots
  - flower
  - stems
35. Digestion of food ends in the
- large intestines.
  - small intestines.
  - stomach.
  - anus.
36. Which one of the following does **not** float on water?
- Ferry
  - Ship
  - Wood
  - Lorry
37. Grade 4 pupils heated soil as drawn below.



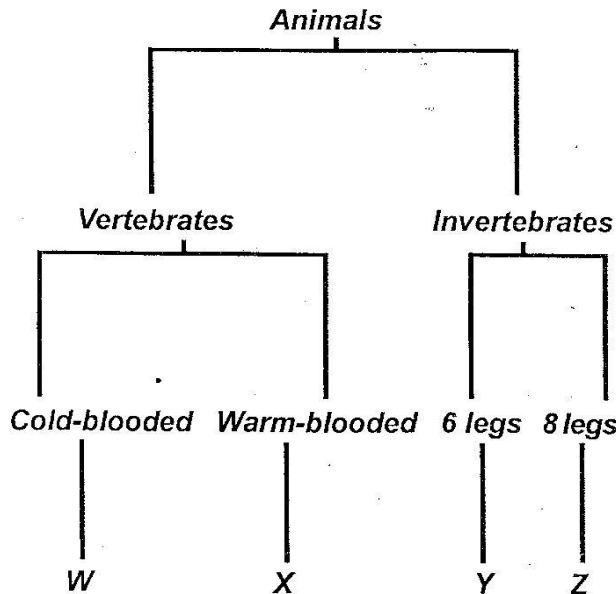
What were they investigating?

- Air in soil
  - Humus in soil
  - Water in soil
  - Minerals in soil
38. A snake moves by
- crawling.
  - flying.
  - swimming.
  - slithering.
39. Which one of the following is a transparent material?
- Tinted glass.
  - Dirty water.
  - Car wind screen.
  - Mirror.
40. All tools can be maintained through the following **except**
- cleaning after use.
  - using for proper purpose.
  - proper storage.
  - sharpening.

41. Which one of the following is **not** a characteristic of all plants?

- A. They feed.
- B. They reproduce.
- C. They breathe.
- D. They move from place to place.

The chart below shows classification of animals. Use it to answer questions 42 and 43.



42. Which one of the following is **not** a characteristic considered in classifying animals above?

- A. Presence of backbone.
- B. Blood temperature.
- C. Number of legs.
- D. Feeding habit.

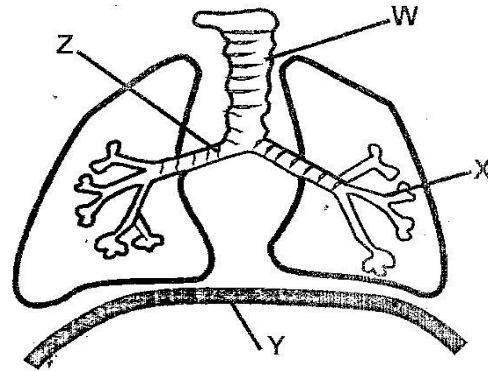
43. Which animals can be represented by letter Y?

- A. Mite
- B. Spider
- C. Termite
- D. Tick

44. The ability of the body to defend itself against disease is called

- A. defence.
- B. immunity.
- C. deficiency.
- D. nutrition.

45. Below is a breathing system.



The exchange of gases takes place in the part labelled

- A. W
- B. X
- C. Z
- D. Y

46. A floater can be made to sink by

- A. changing the shape.
- B. tying it to a floater.
- C. reducing its mass.
- D. adding a sinker to it.

47. Animals that feed on meat only are called

- A. carnivorous.
- B. omnivorous.
- C. herbivorous.
- D. ruminant.

48. Houses can be lit using natural sources of light in the following ways **except**

- A. opening door
- B. opening windows
- C. translucent roots
- D. lighting electricity

49. When modelling the sky at night, bright plasticine is use for making; the

- A. moon.
- B. sun.
- C. stars.
- D. clouds.

50. The type of weed with a long, fleshy stem which grows along the ground, and produces purple flowers is called

- A. sodom apple.
- B. oxalis.
- C. pigweed.
- D. wandering jew.