



# THE KENYA NATIONAL EXAAMINATIONS COUNCIL

## KENYAN SIGN LANGUAGE SECTION B (TASKS 3 AND 4)

### Monitoring Learner Achievement at Primary School Level in Kenya

#### Grade 4

#### Section B



TURN OVER

**KSL LANGUAGE ACTIVITIES –  
SECTION B**

**TASK III: KSL STRUCTURES AND  
FUNCTIONS**

1. SIGN BELOW USE SENTENCE  
MAKE//

(i)



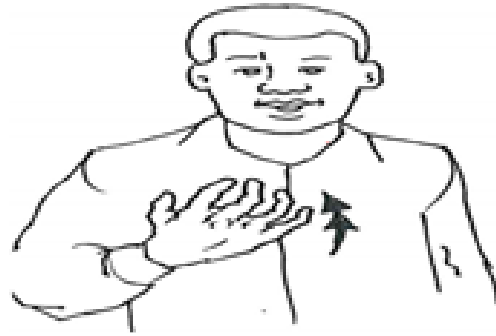
(Learner makes a sentence)

(ii)



(Learner makes a sentence)

(iii)



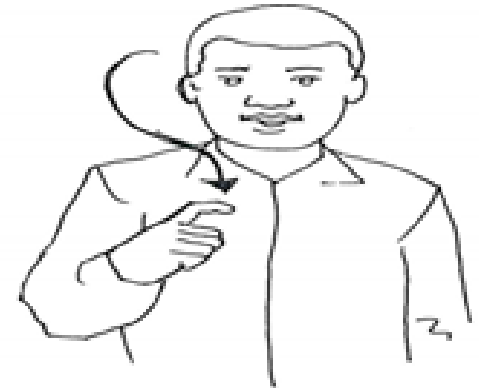
(Learner makes a sentence)

(iv)



(Learner makes a sentence)

(v)



(Learner makes a sentence)

2.

**SIGN SEE/ FINGER-SPELL  
CORRECT// (MARK 5)**

*(The teacher signs as indicated below as  
the learner fingerspells correctly)*

(i) (What teacher signs)

COUSIN

(What the learner finger spelt)

---

(ii) (What teacher signs)

AUNT

(What the learner finger spelt)

\_\_\_\_\_

(iii) (What teacher signs)

BROTHER

(What the learner finger spelt)

\_\_\_\_\_

(iv) (What teacher signs)

NEPHEW

(What the learner finger spelt)

\_\_\_\_\_

(v) (What teacher signs)

FATHER

(What the learner finger spelt)

\_\_\_\_\_

**QUESTION 3: CLOTHES (MARK 3)**

(i) CLOTH BELOW USE TIME  
\_\_\_\_\_?  
ACTIVITY WHICH



(ii) CLOTH BELOW WEAR TIME  
\_\_\_\_\_?  
WHICH



(iii) CLOTH BELOW POSSIBLE WEAR  
\_\_\_\_\_?  
WHO



**QUESTION 4.. SIGN BELOW USE QUESTION ASK// (3 MARKS)**

(i)



(ii)



(iii)



**SIGN SENTENCE BELOW CORRECT // (MARK 2)**

(i)



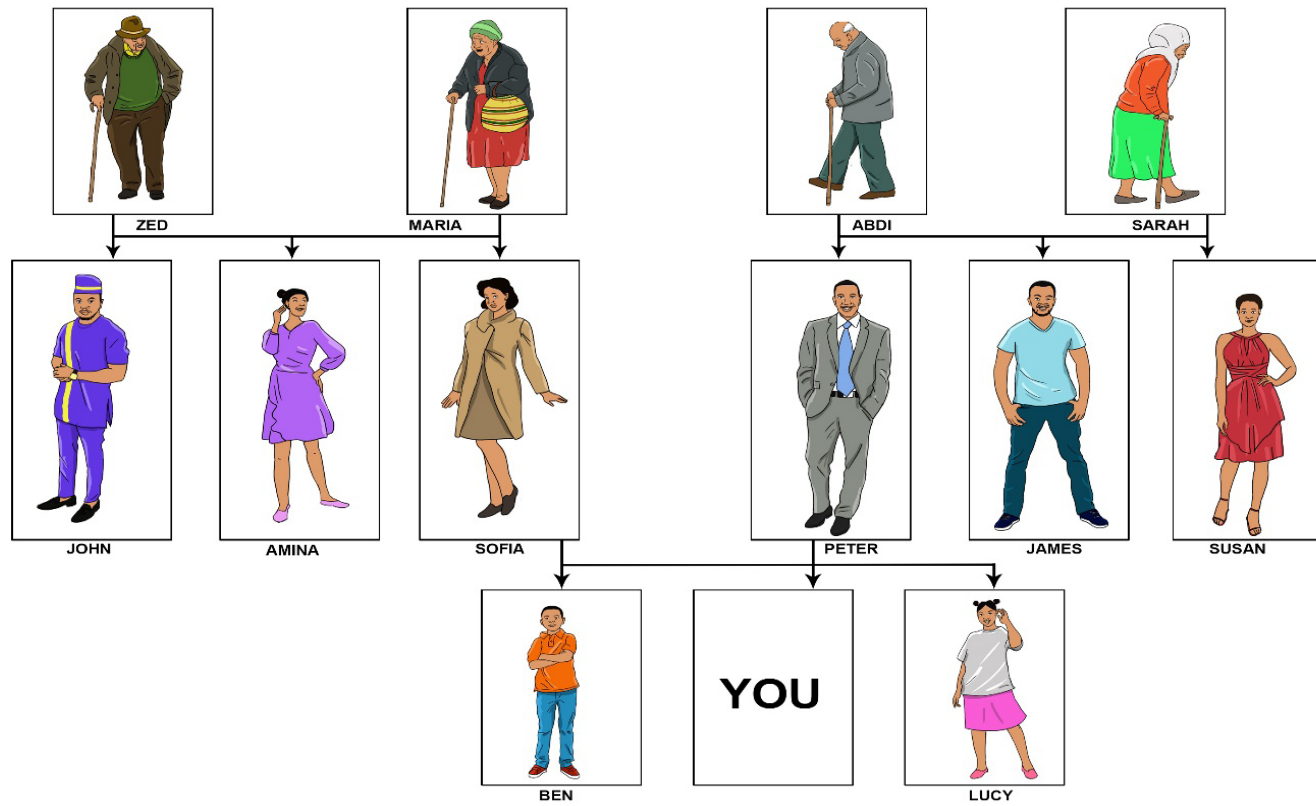
(ii)



**QUESTION 5.**

QUESTION 6:

FAMILY OBSERVE FAMILY THIS//



1. SARAH LUCY RELATE HOW \_\_\_\_\_?
2. PICTURE THIS SISTER YOUR NAME \_\_\_\_\_?

**TASK 4: SIGNED COMPOSITION**

(The teacher shows the learner the picture below and asks the learner to sign about the picture.)

