

# STANDARD 8 SCIENCE

## MID-TERM 1 2020

Time: 1 hour 40 mins

### INSTRUCTIONS TO CANDIDATES (Read these instructions carefully.)

1. You have been given this question booklet and a separate answer sheet. The question booklet contains 50 questions.
2. Do any necessary rough work in this booklet.
3. When you have chosen your answer, mark it on the **ANSWER SHEET**, not in the question booklet.

### HOW TO USE THE ANSWER SHEET.

4. Use an ordinary pencil only.
5. Make sure that you have written on the answer sheet:-

**YOUR INDEX NUMBER**

**YOUR NAME**

**NAME OF YOUR SCHOOL**

6. By drawing a **dark line** inside the correct numbered boxes, mark your full Index Number (i.e. School Code Number and the three-figure Candidate's Number) in the grid near the top of the answer sheet.
7. Do not make any marks outside the boxes.
8. Keep your answer sheet as clean as possible and **do not fold it**.
9. For each of the questions 1-50, four answers are given. The answers are lettered A, B, C, D. In each case, only **ONE** of the four answers is correct. Choose the correct answer.
10. On the answer sheet, show the correct answer by drawing a **dark line** inside the box in which the letter you have chosen is written.

Example:-

In the Question Booklet:

16. Air gets into a seed through
- A. cotyledon.
  - B. micropyle.
  - C. hilum.
  - D. testa.
- The correct answer is B.

On the Answer sheet:

14. [A] [B] [C] [D]

15. [A] [B] [C] [D]

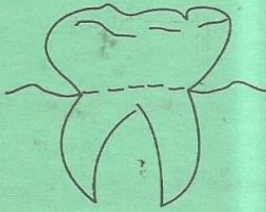
16. [A] [B] [C] [D]

17. [A] [B] [C] [D]

In the set of boxes number 16, the box with letter B printed in it is marked.



1. The diagram below shows a type of human tooth.

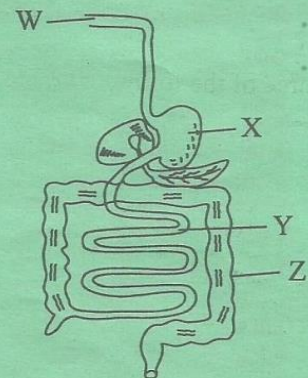


Identify the tooth and its function

- A. Canine - tearing.  
 B. Incisor - cutting.  
 C. Molar - grinding.  
 D. Premolar - chewing.
2. Which of the following is a method of separating a mixture of maize and millet?  
 A. Winnowing.  
 B. Sieving.  
 C. Picking.  
 D. Dissolving and filtering.
3. The following are functions of water in the diet **except**  
 A. formation of blood.  
 B. removal of wastes.  
 C. cools the body.  
 D. prevents constipation.
4. The first sign of pregnancy is  
 A. movement of the foetus in the womb.  
 B. enlargement of the abdomen.  
 C. menstruation stopping.  
 D. breasts enlarging and becoming tender.
5. The following materials when placed in water will float because of material **except**  
 A. feather.  
 B. wood.  
 C. wax.  
 D. bottle top.

6. Which one of the following is **not** a sign of unhealthy crops?  
 A. Spots and streaks.  
 B. Curled leaves.  
 C. Wilting.  
 D. Low quality products.
7. To improve the water holding capacity of a soil one should add  
 A. inorganic matter.  
 B. organic manure.  
 C. air.  
 D. living things.
8. The following are safety measures against lightning **except** one. Which one?  
 A. Never walk on open fields when it is raining.  
 B. Fit lightning arrestors on tall buildings.  
 C. Never walk under electric mains.  
 D. Wear shoes with thick rubber soles.

*Study the diagram below*



9. Which part labelled above is **not correctly** matched with its function?  
 A. W - mixes food with digestive enzymes.  
 B. X - produces juice that kills germs.  
 C. Y - completes digestion of food.  
 D. Z - absorbs digested foods.



10. The following are excretory products **except**

- A. urine.
- B. sweat.
- C. carbon dioxide.
- D. faeces.

11. A certain STI is characterised by yellowish puss oozing out through the urethra and pain when urinating. The STI is most likely to be

- A. Gonorrhoea.
- B. Syphilis.
- C. Chancroids.
- D. HIV and AIDS.

12. The blood vessel that carries deoxygenated blood from the heart to the lungs is

- A. venacava.
- B. pulmonary vein.
- C. aorta.
- D. pulmonary artery.

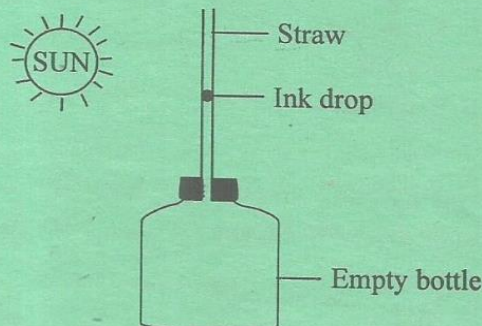
13. Three of the following materials can be used to form shadow. Which one **cannot**?

- A. Wood.
- B. Mirror.
- C. Glass of a lamp.
- D. Piece of clothe.

14. Muchiri had a sharp sense of pain and sensitivity when taking hot or cold drink. Which problem related to teeth was he suffering from?

- A. Tooth decay.
- B. Cavities.
- C. Bleeding gums.
- D. Dental caries.

Study the set up below.



15. After the experiment pupils concluded that

- A. liquids occupy space.
- B. liquids have definite volume.
- C. liquids expand on heating.
- D. air expands on heating.

16. One of the following crop pests attacks seedlings by cutting their stems. Which one?

- A. Cutworm.
- B. Aphid.
- C. Stalkborer.
- D. Weevil.

17. Which one of the following methods of food preservation is food heated to high temperature to kill germs and then remove air?

- A. Drying.
- B. Smoking.
- C. Canning.
- D. Freezing.

18. The temperature at which a substance freezes is the same temperature at which it

- A. evaporates.
- B. condenses.
- C. expands.
- D. melts.



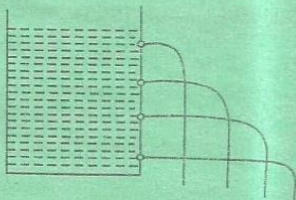
19. Which one of the following animal feeds is **not** leguminous ?
- A. Lucern.
  - B. Desmodium.
  - C. Glycine.
  - D. Stargrass.

20. Plants depend on each other for all the following ways **except**
- A. support.
  - B. food.
  - C. habitat.
  - D. shade.

21. Large volumes of water in the farm can be stored in
- A. tanks.
  - B. pipes.
  - C. dams.
  - D. drums.

22. The two components of the environment that are depended upon by animals directly are
- A. soil and air.
  - B. air and water.
  - C. light and soil.
  - D. water and soil.

23. Std four pupils set up the experiment below.



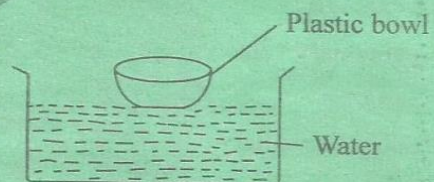
The experiment above was **mainly** set to show that

- A. air exerts pressure.
- B. pressure in liquids increases with depth.
- C. pressure in liquids is equal at the same depth.
- D. liquids exert pressure in all directions.

24. Hydrophytes have all the following, characteristic **except** that they have
- A. flexible stems.
  - B. waxy and hairy leaf surface.
  - C. thick cuticle.
  - D. wide leaves with many stomatas.

25. The most effective mass media to use in campaigning against the spread of HIV and AIDS is
- A. Television.
  - B. Newspaper.
  - C. Posters.
  - D. Radio.

26. Pupils set up an experiment as shown below



The plastic bowl floated **mainly** because of

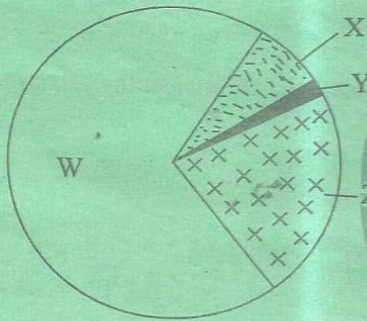
- A. material.
- B. shape.
- C. size.
- D. weight.

27. The most effective method of controlling the spread of bilharzia is
- A. boiling drinking water.
  - B. covering pit latrines.
  - C. cooking food properly.
  - D. proper disposal of feaces.



28. Mulching is **mainly** done on crops to
- prevent growth of weeds.
  - conserve soil moisture.
  - increase soil fertility.
  - control soil erosion.
29. All the following are carried by blood plasma **except**
- carbon dioxide.
  - excess salts.
  - excess water.
  - oxygen.

*Study the pie chart below.*



30. Which part represents the gas that is used in preservation of fizzy drinks?
- W
  - X
  - Y
  - Z
31. The planet nearest to the earth is
- Saturn.
  - Mars.
  - Jupiter.
  - Mercury.

32. The following are sources of electricity **except**
- solar panel.
  - biogas.
  - bicycle dynamo.
  - car battery.

33. All the following are effects of force on an object **except**
- increases the speed of moving object.
  - decreases the speed of moving objects.
  - changes the state of matter on an object.
  - changes the shape of an object.

34. The component of blood that helps in clotting of blood is the
- red cells.
  - platelets.
  - white cells.
  - plasma.

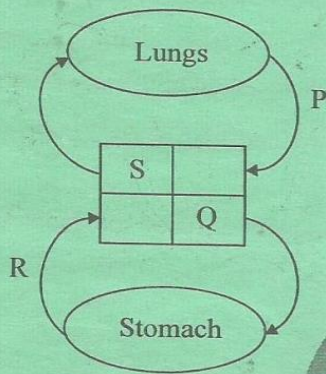
35. Convection is the method of heat transfer that **mainly** takes place in
- gases and solids.
  - gases only.
  - gases and liquids.
  - liquids only.

36. Which one of the following livestock parasites is **only** found in the brains, lungs and stomach of animals?
- Liverfluke.
  - Roundworm.
  - Lungworm.
  - Hookworm.



37. Sweat in human body is produced and stored in the
- dermis.
  - epidermis.
  - sweat pore.
  - sweat hair.

*Study the diagram below of a simplified blood circulatory system.*



38. Letters P, Q, R and S respectively represent the
- pulmonary vein, left ventricle, venacava, right auricle.
  - right auricle, venacava, left ventricle, pulmonary vein.
  - aorta, right ventricle, pulmonary artery, left auricle.
  - venacava, left auricle, aorta, right ventricle.

39. The following are all reasons for proper storage of tools **except**
- to last longer.
  - for safety of tools and their uses.
  - to access them easily.
  - for them to look attractive.

40. The **best** method to control the spread of tapeworms and ticks in livestock is through
- dipping.
  - deworming.
  - drenching.
  - rotational grazing.

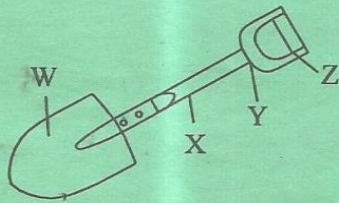
41. The attachment of the foetus to the uterine wall is known as
- implantation.
  - gestation.
  - fertilization.
  - parturition.

42. The **correct** units for measuring force is
- kilograms.
  - tonnes.
  - newtons.
  - grams.

43. Which group of crops below consists of fibre crops **only**?
- Tea, coconut, cotton.
  - Cotton, flax, sisal.
  - Tea, coffee, cocoa.
  - Sunflower, simsim, coconut.



44. The diagram below shows a simple machine.



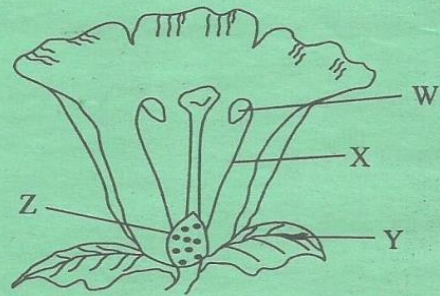
When in use, the position of the effort is **mainly** at the point labelled

- A. X  
B. Y  
C. Z  
D. W
45. At the age of 14 weeks after birth, an infant is immunized against
- A. measles and tuberculosis.  
B. whooping cough and polio.  
C. polio and measles.  
D. tuberculosis and tetanus.
46. A mass of cell formed immediately after fertilization is called
- A. embryo.  
B. foetus.  
C. zygote.  
D. infant.
47. A pupil was blind folded and a bell rung from different positions for her to point. What were they investigating?
- A. Sound pollution.  
B. Speed of sound.  
C. Direction of sound.  
D. Special sound.

48. Which one of the following plant nutrients is a macro nutrient?

- A. Chlorine.  
B. Iron.  
C. Manganese.  
D. Nitrogen.

49. The diagram below shows the reproductive part of a plant.



Which part protects the flower when in the bud stage?

- A. Z  
B. Y  
C. W  
D. X
50. A child with thin brownish hair and sores at the corners of the mouth has
- A. shortness of breath.  
B. bowshaped legs.  
C. wrinkles on the face.  
D. swollen hands, face and legs.