

STANDARD 6 SCIENCE

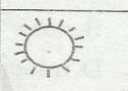




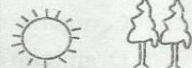
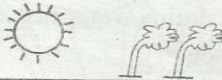

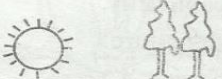

MID-TERM 1 2020

1. Curative drugs are also called
 A. vaccines B. painkillers
 C. antibiotics D. stimulants
2. A child suffering from kwashiorkor should be given a diet rich in _____
 A. proteins B. fats
 C. carbohydrates D. vitamins
3. Which one of the following does **not** help to prevent tooth decay?
 A. Drinking plenty of milk regularly.
 B. Brushing teeth after every meal.
 C. Regular checking of teeth by a dentist.
 D. Eating sweets and sugary food.
4. The juice produced in the mouth is used to digest
 A. mineral salts B. carbohydrates
 C. proteins D. vitamins
5. In the human body water is absorbed in the
 A. colon B. ileum
 C. stomach D. rectum
6. When breathing in the
 A. lungs shrink.
 B. diaphragm becomes dome shaped.
 C. volume of the chest decreases.
 D. diaphragm flattens.
7. The following are functions of the trachea **except**
 A. moistening air. B. trapping dust.
 C. exchanging gases. D. warming air.
8. Which is the first stage of HIV infection?
 A. Asymptomatic B. Full blown
 C. Symptomatic D. Window
9. Which of the following organs in the human body **both** produce sex cells?
 A. Ovary and testis.
 B. Penis and vagina.
 C. Testis and penis.
 D. Ovary and uterus.

TW - 002

10. Which one of the following changes takes place in boys **only** during adolescence?
 A. Releasing of sex cells.
 B. Growth of pubic hair.
 C. Fast body growth.
 D. Chest and shoulders become broader.
11. Which one of the following plants is a cash crop?
 A. Irish potatoes
 B. Sunflower
 C. Pineapple
 D. Wheat

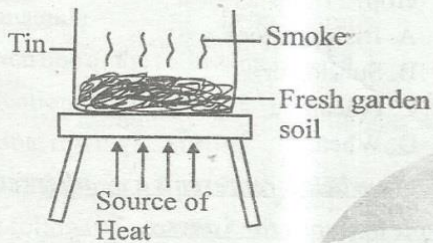
The diagram below represents a weather record that was made by pupils for 5 days.

	Morning	Afternoon
Monday		
Tuesday		
Wednesday		
Thursday		
Friday		

12. Which one of the following statements about the weather is **correct**? Whenever it
 A. was windy in the morning, it rained in the afternoon.
 B. was windy, there was rain.
 C. rained, it was windy.
 D. was sunny, it was windy.
13. Clothes on a clothe line took too long to dry. The weather was **most** likely to be
 A. cold and calm B. cold and windy
 C. dry and calm D. dry and cold

SCIENCE STD. 6

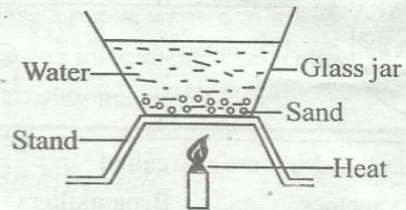
14. Which one of the following is an example of a harmful animal?
- A. Termite B. Dog
C. Donkey D. Cat
15. Which one of the following is **not** a vertebrate?
- A. Rat B. Chameleon
C. Lizard D. Snail
16. The set up shown below can be used to investigate the presence of a certain component of soil.



The soil component investigated is

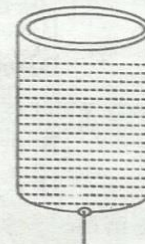
- A. water B. air
C. organic matter D. mineral salts
17. The texture of a soil depends on the
- A. size of soil particles.
B. amount of water in the soil.
C. organic matter in the soil.
D. amount of mineral particles in the soil.
18. The soil that drains water fastest
- A. cracks when dry.
B. has poor capillarity.
C. has smooth texture.
D. contains humus
19. The following are signs and symptoms of anaemia **except**
- A. pale white eyes
B. muscle wastage
C. breathlessness
D. tiredness
20. Which one of the following bodies produces light?
- A. Mercury B. Moon
C. Star D. Venus

21. The diagram below represents a set up that can be used to demonstrate a certain process.



The process demonstrated is

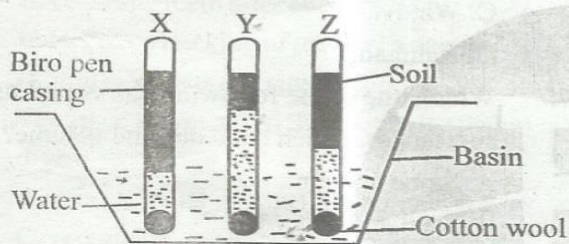
- A. conduction B. diffusion
C. radiation D. convection
22. A sufuria made of steel weighing 800g floats on water while a nail made of iron weighing 20g sinks. This is because of difference in
- A. shape B. volume
C. mass D. type of material
23. The diagram below shows how a liquid flows out of a tin with a hole at the bottom.



Which one of the following will make the liquid flow out smoothly?

- A. Shaking the tin.
B. Increasing the size of the hole.
C. Making another hole at the top.
D. Raising the container to a higher level.
24. Which one of the following properties of a gas changes when it is heated and then cooled?
- A. Mass B. Colour
C. Volume D. Weight
25. The process by which water vapour changes to liquid is called
- A. evaporation B. condensation
C. melting D. freezing

26. Which one of the following pairs of processes is as a result of increase in temperature?
- Melting and freezing.
 - Condensation and evaporation.
 - Condensation and freezing.
 - Melting and evaporation.
27. Which one of the following is **not** a practice for maintaining simple tools?
- Storing in a moist place.
 - Oiling.
 - Using them for the right purpose.
 - Sharpening.
28. Pupils investigated capillarity in different types of soil. The results were as shown in the diagram below.



From the results the soil samples X, Y and Z are most likely to be

- | X | Y | Z |
|---------|------|------|
| A. Sand | Clay | Loam |
| B. Clay | Sand | Loam |
| C. Sand | Loam | Clay |
| D. Clay | Loam | Sand |
29. Which one of the following is **not** a component of soil?
- Water
 - Plant
 - Air
 - Rock particles
30. Which of the following information is usually given when obtaining medicine from a pharmacy?
- Disposal method of containers.
 - The dosage.
 - Date of manufacture.
 - How to store the medicine.

31. The **best** soil for making ribbons is _____
- clay
 - loam
 - sand
 - mixture of sand and loam
32. A child with knock knees is **likely** to be lacking
- calcium
 - proteins
 - iron
 - enough food
33. Which one of the following pairs of vaccines are given to infants at birth and 9 months respectively?
- Measles and antipolio.
 - BCG and measles.
 - Antipolio and BCG.
 - DPT and yellow fever.
34. Shedding of teeth in children starts at the age of _____
- 6 months
 - 12 years
 - 20 years
 - 6 years
35. The type of fungi that grows on bread that has been left for some days is called _____
- toad stool
 - penicillium
 - mould
 - moss

Use the diagram below to answer questions 36 and 37.



36. Which one of the parts labelled above receives pollen grains during pollination?
- V
 - W
 - K
 - J
37. The **main** function of the part labelled W is to
- protect the flower during bud stage.
 - produce nectar.
 - attract insects for pollination.
 - produce pollen grains.

38. The type of counseling given before a person takes an HIV test is called
- evaluative counseling.
 - pre-test counseling.
 - post-test counseling.
 - window counseling.

39. The following are signs and symptoms of a certain nutritional deficiency disease:
- The muscles disappear.
 - Eyes become alert.
 - Child looks like a young old person.

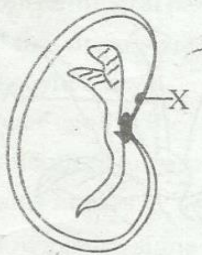
The disease described above is **likely** to be

- kwashiorkor
 - rickets
 - anaemia
 - marasmus
40. Which one of the following is **not** a recreational use of water?
- Boat rowing
 - Surfing
 - Bathing
 - Swimming

41. The following are tuber crops **except**
- onions
 - arrowroot
 - carrot
 - cassava

42. Which one of the following is green and non-flowering?
- Onion
 - Moss
 - Mould
 - Sisal

43. The diagram below represents the external structure of a bean seed.



The part labelled X is called

- plumule
 - radicle
 - hilum
 - micropyle
44. The presence of thick white and mountain shaped clouds is a sign of
- strong winds blowing.
 - heavy rain falling soon.
 - fine weather.
 - low temperature.

45. A jar used for measuring rainfall should be
- narrow
 - short
 - wide
 - long

46. Class 5 pupils wanted to improvise a certain weather instrument. They collected the following materials.

- ink
- Biro pen tube.
- Nails.
- Manilla paper.
- Glass bottle.
- Water.

Which weather instrument were they **likely** to construct?

- Windsock
- Liquid thermometer
- Windvane
- Raingauge

47. Which one of the following pairs consists of substances, which have definite volume?

- Stone and air.
- Sand and water.
- Ice and air.
- Water vapor and ice.

48. Which of the following structures make up the female parts of a flower?

- Anther, filament, ovary.
- Anther, style, ovary.
- Stigma, filament, ovary.
- Stigma, style, ovary.

49. When the arrow head of a wind vane points to the South, the wind is blowing from _____

- South
- East
- West
- North

50. Which one of the following groups of objects consists of **only** objects that would sink in water?

- Piece of chalk, plastic bottle, polythene bag.
- Bottle top, nail, cork.
- Nail, piece of glass, stone.
- Piece of chalk, steel needle, cork.