


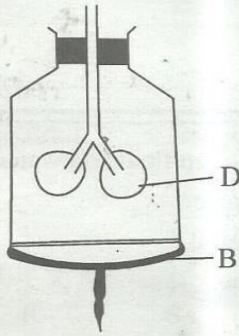
STANDARD 5 SCIENCE

MID-TERM 1 2020

- Which among the following crops is a cereal?
A. Soya beans. B. Peas.
C. Coffee. D. Millet.
- How many deciduous teeth does a child have?
A. 20 B. 12
C. 6 D. 32
- Solid waste from animals generally is known as
A. faeces. B. urine.
C. undigested food. D. excreta.
- Which of the following is **not** a recreational use of water?
A. Making fountains.
B. Surfing.
C. Swimming.
D. Skating.
- Proteins are also called
A. energy giving foods.
B. protective foods.
C. body building foods.
D. mineral supplements.
- A house can be lit naturally through the following **except** by using
A. transparent roofs.
B. gas lamps.
C. skylights.
D. opening windows.
- The diagram below represents a certain weed.

It's likely to produce _____ flowers.
A. purple. B. blue.
C. yellow. D. white.
- A bottle top floats on water due to its
A. weight.
B. material.
C. shape.
D. size.
- Which of the following are both uses of heat?
A. Warming and drying.
B. Drying and discouraging pests.
C. Safety and cooking.
D. Warming and seeing clearly.
- Below are descriptions of a certain cloud:
(i) *Appear lowest in the sky*
(ii) *Are mountainous in appearance*
(iii) *Are dark grey in colour*
These are _____ clouds.
A. cumulus
B. cumulus and nimbus
C. dry
D. nimbus
- Which body fluid below does **not** contain HIV virus?
A. Urine.
B. Saliva.
C. Blood.
D. Breast milk.
- _____ is the most expensive method of weed control.
A. Mulching
B. Digging out.
C. Use of chemicals.
D. Uprooting.

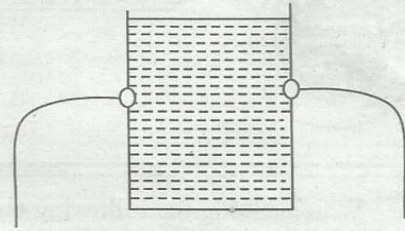
The diagram below illustrates the model of the breathing system. Use it to answer questions

13 and 14.



13. The part labelled **D** represents
 - A. lungs.
 - B. chest.
 - C. ribs.
 - D. diaphragm.
14. For the part marked **D** to become inflated, the part marked **B** should be
 - A. pumped.
 - B. pushed up.
 - C. pulled down.
 - D. blown.
15. Pressure exerted by water depends on
 - A. volume.
 - B. depth.
 - C. mass.
 - D. surface area.
16. If a person has lost permanent teeth they can be replaced using
 - A. primary teeth.
 - B. dental floss.
 - C. dental fillers.
 - D. dentures.
17. Digestion of food ends in the _____ and begins in the _____ respectively.
 - A. mouth, colon
 - B. stomach, ileum
 - C. mouth, ileum
 - D. ileum, mouth
18. The _____ are the reproductive organs in plants.
 - A. stem
 - B. flowers
 - C. leaves
 - D. roots
19. The cutting and removal of wool off a sheep is known as
 - A. shaving
 - B. trimming
 - C. shearing
 - D. slashing
20. The daily changes occurring in the atmosphere is known as
 - A. weather.
 - B. temperature.
 - C. climate.
 - D. humidity.

21. Std. 4 pupils carried out the following experiment to investigate pressure in liquids

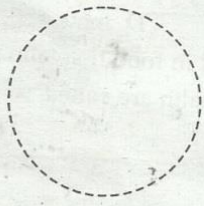


The best conclusion after the experiment was that pressure in liquids

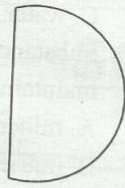
- A. increases with height.
 - B. is equal at the same depth.
 - C. increases with depth.
 - D. is exerted in all directions.
22. The following are artificial sources of light **except**
 - A. skylights.
 - B. electric bulbs.
 - C. candles.
 - D. torch.
 23. Which animal product below is got from most farm animals?
 - A. Milk.
 - B. Eggs.
 - C. Mutton.
 - D. Meat.
 24. The following are characteristics of a certain weed:
 - (i) Has yellow fruits
 - (ii) Is poisonous
 - (iii) Has thorns on leaves
 The weed described above is
 - A. thorn apple.
 - B. oxalis.
 - C. sodom apple.
 - D. black jack.
 25. The sticky substance that forms on dirty teeth is called
 - A. acid.
 - B. cavity.
 - C. plaque.
 - D. gingivitis.

26. Which one of the following phases of the moon is not visible?

A.



B.



C.



D.



27. The ability of the body to defend itself against diseases is called

- A. immune.
- B. immunodeficiency.
- C. deficiency.
- D. immunity.

28. The foods that help our bodies to fight diseases are called

- A. energy giving foods.
- B. sugary foods.
- C. body building foods.
- D. protective foods.

29. The **best** soil for growing crops is the one that has

- A. no matter.
- B. a lot of organic matter.
- C. no living organisms.
- D. no humus.

30. Many young ones born at the same time to the same mother animal are known as

- A. litter.
- B. triplets.
- C. twins.
- D. fingerlings.

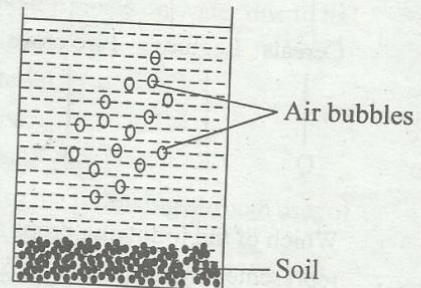
31. Which two types of teeth are used for chewing and grinding food?

- A. Canine and incisor.
- B. Molar and canine.
- C. Premolar and molar.
- D. Incisor and premolar.

32. Which of the following types of teeth are the last to shed?

- A. Incisors.
- B. Canines.
- C. Molars.
- D. Premolars.

33. The activity below was carried out by std. 4 pupils



The activity showed that

- A. soil contains air.
- B. water contains air.
- C. air is formed when water is mixed with soil.
- D. air comes from small animals in the soil.

34. Which one of the following is a way of maintaining simple tools?

- A. Cleaning before use.
- B. Storing in a cold place.
- C. Oiling.
- D. Using a tool for several purposes.

35. Which one of the following statements is **correct** about proper use and storage of medicine?

- A. Sharing medicine with family members.
- B. Labelling medicine containers.
- C. Storing medicine in sealed water bottles.
- D. Keeping medicine in a well lit place.

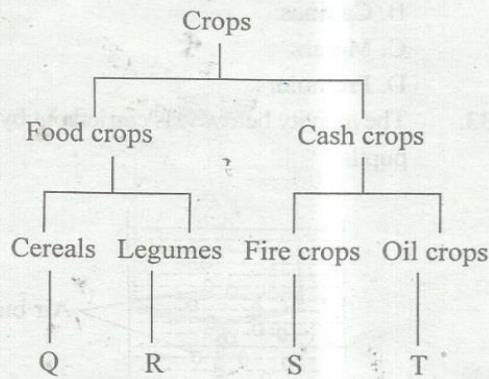
36. Digestive juice produced in the mouth is called

- A. hydrochloric acid.
- B. saliva.
- C. intestinal juice.
- D. bile.

37. Choose a pair where any of the methods can be used for making water safe for drinking.

- A. Addition of chemicals, filtration.
- B. Boiling, addition of chemicals.
- C. Decantation, boiling.
- D. Filtration, decantation.

38. The chart below represents a simple classification of crops



Which of the following crops are **correctly** represented by **Q, R, S and T**?

Q	R	S	T
A. Sorghum	Peas	Sisal	Sunflower
B. Rice	Greengrams	Kales	Cotton
C. Peas	Wheat	Sunflower	Cotton
D. Greengrams	Wheat	Sisal	Pawpaw

39. In the word AIDS, letter D stands for
 A. death. B. disease.
 C. deficiency. D. dangerous.
40. The following are parts of the breathing system **except**
 A. trachea. B. diaphragm.
 C. alveoli. D. oesophagus.
41. The amount of medicine to be taken at any given time is known as
 A. dosage. B. antibiotics.
 C. vaccine. D. prescription.
42. John took ugali and meat for supper. Which one of the following foods could he also eat to make a balanced diet?
 A. Sausage. B. Chips.
 C. Watermelon. D. Honey.
43. The following are characteristics of a certain type of tooth
 (i) Sharp
 (ii) Chisel shaped
 (iii) Has one root
 The type of tooth described is a
 A. canine. B. molar.
 C. premolar. D. Incisor.

44. Animals move from one place to another to look for three of the following **except**
 A. food. B. air.
 C. water. D. mates.
45. Substances found in food that help to maintain good health are called
 A. mineral salts.
 B. nutrients.
 C. vitamins.
 D. food supplement.
46. All the following animals have backbone **except**
 A. newt. B. lizard.
 C. dove. D. mite.
47. The young one of a fish is known as
 A. tadpole.
 B. reptile.
 C. lizard.
 D. fingerling.

48. The diagram below illustrates a certain tooth problem



- Which one is it?
 A. Plaque.
 B. Tooth cavity.
 C. Tooth decay.
 D. Bleeding gums.
49. Proteins are **mainly** digested in the
 A. duodenum.
 B. ileum.
 C. stomach.
 D. mouth.
50. The following can be used to store water. Which one is **not correct**?
 A. Tanks.
 B. Dams.
 C. Taps.
 D. Buckets.