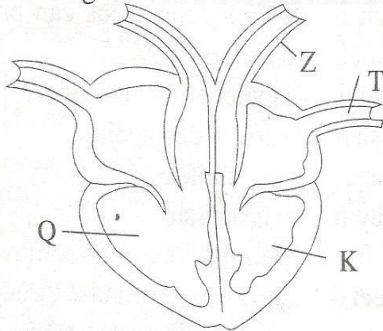


# CLASS 8 SCIENCE

## END TERM 1 2020

1. Which of the following waste products is not excreted by the kidney?  
A. Urea                      B. Carbon dioxide  
C. Excess water          D. Salts
2. Clouds that are dark grey in colour also  
A. indicate rain  
B. are found high in the sky  
C. indicate fine weather  
D. look like bundles of cotton wool
3. The diagram below shows a human heart

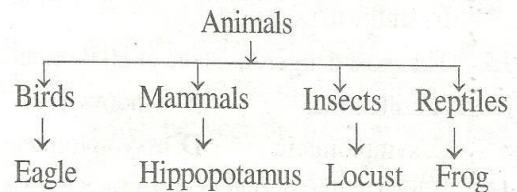


Which of the following statements is true about the parts shown above?

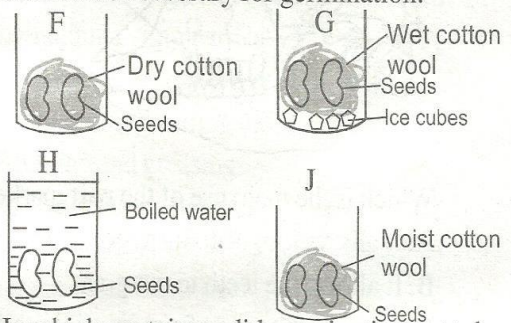
- A. Part Z carries oxygenated blood
  - B. Part K pumps blood to the lungs
  - C. Part Q receives blood from the lungs
  - D. Part T carries deoxygenated blood
4. What is the similarity between a bat and duckbilled platypus?  
A. They lay eggs  
B. They can fly  
C. They are covered by scales  
D. They feed their young ones with milk
  5. The following are uses of heat except  
A. ironing clothes  
B. seeing clearly  
C. drying clothes  
D. warming one self
  6. Learners added dry soil into water and observed. They concluded that  
A. soil has living organisms  
B. soil has mineral particles  
C. soil has air  
D. soil has water

CAT 003

7. Three of the following are adaptation of plants that grow in wet areas except  
A. broad leaves  
B. flexible stems  
C. thick waxy cuticle  
D. hairy waxy upper surface
8. Which of the following is a sign and symptom of a deficiency disease caused by lack of enough balanced diet?  
A. Thin brown hair  
B. Sores at the end of the mouth  
C. Visible bones beneath the skin  
D. Being tired after a short exercise
9. The chart below shows classification of animals



- Which animal is wrongly classified?
- A. Eagle                      B. Frog
  - C. Locust                     D. Hippopotamus
10. Which of the following is NOT a function of amnion fluid?  
A. It helps the foetus move freely  
B. It keeps the foetus warm  
C. It nourishes the foetus  
D. It moistens the foetus
  11. The experiment below were done to investigate conditions necessary for germination.



In which containers did germination not take place?

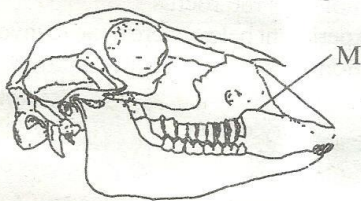
- A. H,F                              B. G,J
- C. H,J                             D. G,F



# CLASS 8 SCIENCE

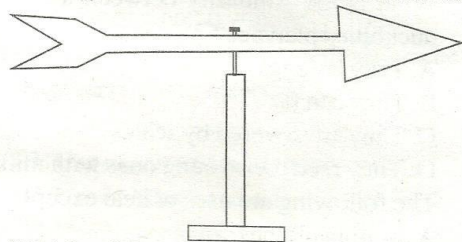
## END TERM 1 2020

12. Study the feeding relationship below  
Grass → Grasshopper → Lizard → Hawk  
What will happen if a disease kills all hawks in the habitat?
- A. Grasshoppers will increase
  - B. Lizards will reduce
  - C. Grass will increase
  - D. Lizards and grasshoppers will increase
13. Spread of HIV/AIDS can be controlled through the following except
- A. conducting mass education
  - B. visiting the VCT
  - C. abstaining from sex if married
  - D. creating public awareness on HIV/AIDS
14. Which of the following is an advantage of organic manure over fertilizers?
- A. Can encourage growth of weeds
  - B. Improves soil structure
  - C. Releases nutrients immediately
  - D. Bulky to transport
15. The most dangerous stage of HIV infection is
- A. full blown
  - B. window stage
  - C. symptomatic
  - D. asymptomatic
16. Which of the following is an effect of ill health in crops?
- A. Reduced quality of produce
  - B. Discolouration of leaves
  - C. Stunted growth
  - D. Curled leaves
17. The diagram below shows an adaptation of herbivorous animals to feeding.



- Which is the main use of the part marked M?
- A. It allows tongue to turn food in the mouth
  - B. It allows the teeth to cut grass
  - C. It prevents tongue from injuries while collecting food
  - D. It prevents teeth from wearing out during chewing

18. Fertilization in flowering plants takes place when
- A. pollen grains fall on the stigma
  - B. anthers produce pollen grains
  - C. pollen grain enters the ovule
  - D. ovary produces ovules
19. The following are signs and symptoms of diseases
- i) Pain in the muscles and joints
  - ii) Prolonged cough
  - iii) Violent diarrhoea
  - iv) Blood in stool
  - v) Abdominal pain
- Which two are signs of typhoid?
- A. ii, iii
  - B. i, v
  - C. iv, ii
  - D. iii, iv
20. Which of the following feeds can provide livestock with energy?
- A. Salt lick, nappier grass, bone meal
  - B. Fish meal, clover, desmodium
  - C. Oats, glycine, saltlick
  - D. Hay, oats, wheat bran
21. Heat from a burning jiko in a room reaches the feet of people sitting round it through
- A. radiation
  - B. conduction
  - C. convection
  - D. condensation
22. People who do not cover their pit latrines are most likely to suffer from
- A. bilharzia
  - B. malaria
  - C. tuberculosis
  - D. cholera
23. The diagram below shows a weather instrument.



- Which of these statements is true about the instrument?
- A. The tail and the head should be of the same size
  - B. It shows direction and strength of wind
  - C. The tail and arrow should be made of the same material
  - D. It should be painted black and white for visibility



# CLASS 8 SCIENCE

## END TERM 1 2020

24. The best procedure to separate a mixture of salt, soil and iron fillings is
- filtering, use of magnet, dissolving, evaporation
  - use of magnet, dissolving, filtering, evaporation
  - dissolving, evaporation, use of magnet, filtering
  - use of magnet, filtering, dissolving, evaporation

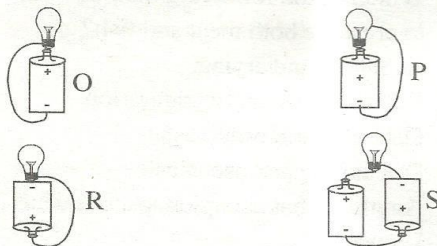
25. Which of the following crops stores food in the same part as a sugarcane?
- Carrot and onions
  - Yams and cactus
  - Irish potato and sweet potato
  - Cabbage and sisal

26. Learners carried the following materials to class

-Mirror                      -Water  
-White paper                -Basin

They were likely to be investigating

- how light travels in different materials
  - formation of a rainbow
  - sources of light
  - reflection of light
27. Friction can be reduced by
- making the surface rough
  - increasing the weight of the object
  - using ball bearings
  - adding treads on the surface
28. The diagrams below show simple circuits.



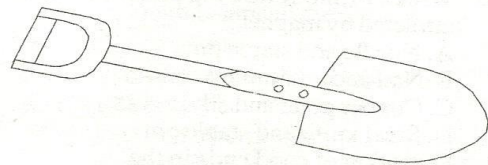
In which set up will the bulb not light?

- R
  - P
  - O
  - S
29. Which of the following is an illegal drug?
- Alcohol
  - Bhang
  - Tobacco
  - Khat

30. Which of the following crop pests is correctly matched with the damage it causes?

Pest	Damage
A. Aphids	Cuts stems of seedlings
B. Weevil	Bore holes on grains
C. Weaver bird	Destroys grains in store
D. Stalkborer	Sucks sap from leaves

31. The main use of safety belts in vehicles is
- to overcome force of inertia
  - to make the car stable
  - to reduce weight of the vehicle
  - to reduce force of friction
32. The tool below shows a lever



Which of the following statements is true about the above tool when in use?

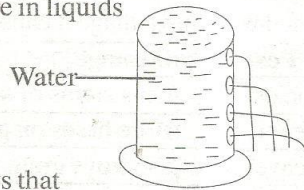
- The effort is between the load and fulcrum
  - The load is between the fulcrum and effort
  - The fulcrum is between the effort and the load
  - The fulcrum, effort and load keep changing positions
33. The rate at which water passes through the soil is mainly determined by
- amount of water in the soil
  - the number of small animals in the soil
  - the type of mineral particles in the soil
  - the size of the soil particles
34. Which one of the following is not a way of maintaining simple tools?
- Cleaning after use
  - Sharpening cutting tools
  - Oiling and greasing
  - Using them regularly
35. Mulching has the following importances except
- reducing water loss from the soil
  - controlling splash erosion
  - controlling spread of crop pest
  - adding manure into the soil



# CLASS 8 SCIENCE

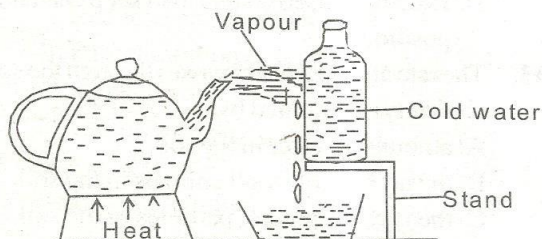
## END TERM 1 2020

36. The set-up below was done to investigate pressure in liquids



It shows that

- A. pressure in liquids is equal at the same level  
 B. pressure in liquids increases with depth  
 C. liquids exert pressure in all directions  
 D. pressure in liquids increases with height
37. Which of the following does not take place in the nose?  
 A. Air is cleaned      B. Air is warmed  
 C. Air is absorbed      D. Air is moistened
38. Which of the following materials cannot be attracted by magnet?  
 A. Needle and staple pins  
 B. Nail and aluminium sulphur  
 C. Copper plate and silver coin  
 D. Steel knife and staple pins
39. Digestion of food ends in the  
 A. small intestine      B. anus  
 C. stomach      D. large intestine
40. The component of air that takes 21% of air can be used in  
 A. putting out fire      B. making light bulbs  
 C. breathing      D. making plant foods
41. The diagram below shows an experiment done to investigate a certain change of state



The main process investigated was

- A. evaporation      B. freezing  
 C. melting      D. condensation
42. The following are effects of water pollution except  
 A. increase in growth of water weeds  
 B. death of water plants  
 C. formation of acid rain  
 D. increase in soil fertility
43. A pupil poured hot water in a glass and it cracked. This is because of  
 A. sudden expansion of the inner wall of the glass  
 B. sudden expansion of the outer wall of the glass  
 C. sudden contraction of the outer wall of the glass  
 D. sudden contraction of the inner wall of the glass

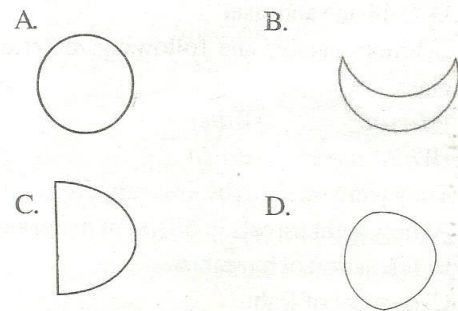
44. Which of the immunizable diseases below is correctly matched with its time of immunization?

A. Measles - 6 weeks  
 B. Polio - 10 weeks  
 C. Tetanus - At birth  
 D. Tuberculosis - 14 weeks

45. Human intestinal worms can be controlled through the following ways except

A. proper washing of foods eaten raw  
 B. practising rotational grazing  
 C. proper sanitation  
 D. regular deworming

46. Which of the diagrams below shows a quarter moon?



47. Which of the following is an effect of HIV/AIDS to the family?

A. Lack of self esteem  
 B. Low agricultural production  
 C. Increase in number of school dropouts  
 D. Loss of a bread winner

48. Which of the following methods can be used to preserve both meat and fish?

A. Salting and drying  
 B. Use of ash and refrigeration  
 C. Use of honey and ash  
 D. Canning and use of ash

49. Anything that occupies space and has mass is known as

A. solid      B. matter  
 C. force      D. energy

50. Sound can travel through all the following except

A. air      B. solids  
 C. vacuum      D. liquids