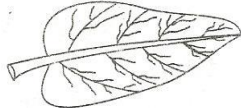


CLASS 7 SCIENCE END TERM 1 2020

- The quantity of matter of an object is called
A. volume B. mass
C. weight D. space
- Duck-billed platypus and a hen have a similarity in that
A. all have bodies covered with scales
B. both lay unfertilized eggs
C. both take care of their young ones
D. all have varying body temperature
- The diagram below shows a leaf of a plant.

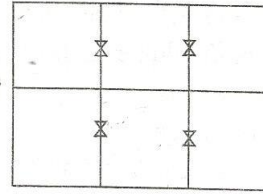


Which of the following plants have such leaves ?

- Peas, beans, maize
 - Grass, millet, sorghum
 - Greengrams, cabbage, kales
 - Rice, mango, wheat
- A child was taken to hospital with the following signs and symptoms
- bow legs
- weak bones
- constant head movement
Which of the following diseases was the child likely to be suffering from ?
A. Rickets B. Anaemia
C. Kwashiorkor D. Marasmus
 - Which of the following is TRUE about all veins ?
A. Carry deoxygenated blood
B. Carry blood under high pressure
C. Have thinner walls than capillaries
D. Carry blood to the heart
 - Which of the following is a proper use of medicine ?
A. Sharing medicine with a friend
B. Storing medicine in a well labelled container
C. Taking the correct dosage
D. Keeping medicine in a lockable cupboard

CAT 003

- The diagram below shows a method of grazing made using permanent fences.



It is likely to be

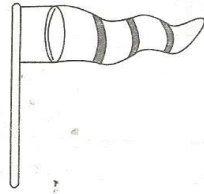
- paddocking
 - zero grazing
 - strip grazing
 - tethering
- Which of the following materials are floaters only ?
A. Maize comb, nail, office pins
B. Wax, soil, cork
C. Bottle top, clay, cotton wool
D. Paper, wax, dry wood
 - Which of the following changes take place in girls only during adolescence ?
A. Growth of hair in the armpits
B. Increase in weight and height
C. Broadening of the hips
D. Pimples appear on the face
 - Three of the following are signs of tuberculosis EXCEPT
A. loss of weight
B. sweating especially at night
C. prolonged cough
D. severe abdominal pain
 - Which of the following is a sea mammal ?
A. Shark B. Hippopotamus
C. Whale D. Crocodile
 - The component of blood that is attacked by the HIV virus is
A. red blood cells
B. white blood cells
C. plasma
D. platelets

1

SCIENCE STD.7

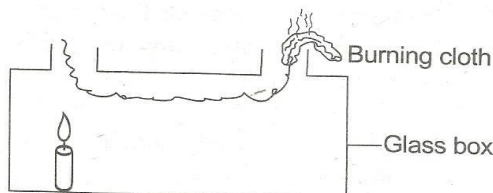
CLASS 7 SCIENCE END TERM 1 2020

13. The diagram below shows a weather instrument.



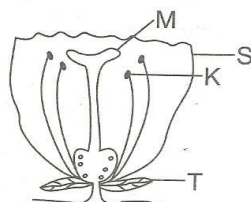
It is true to say that

- A. it measures the amount of rainfall
 - B. the sock should be made of flexible material
 - C. it has one opening
 - D. it is painted black and white to make it last long
14. Which of the following is a balanced diet ?
- A. Beans, greengrams, peas
 - B. Rice, mashed potatoes, eggs
 - C. Pawpaw, pumpkin, kales
 - D. Carrots, rice, bacon
15. A certain weed has the following characteristics
- white flowers
 - black seeds with hooks
- Which weed is it likely to be ?
- A. Pigweed
 - B. Blackjack
 - C. Sodom apple
 - D. Oxalis
16. The experiment below shows a certain property of matter.



It shows

- A. conduction of heat in solids
 - B. convection in liquids
 - C. radiation in gases
 - D. convection in gases
17. The diagram below shows a flower.

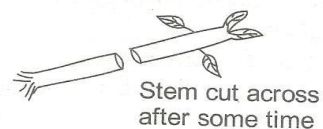
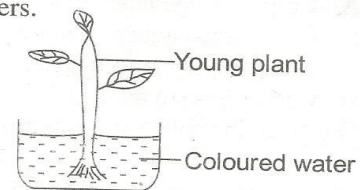


CAT 003

Which part is correctly matched with its function ?

	Part	Function
A	T	Attracts insects
B	K	Produce female sex cells
C	M	Receives pollen grains
D	S	Produce pollen grains

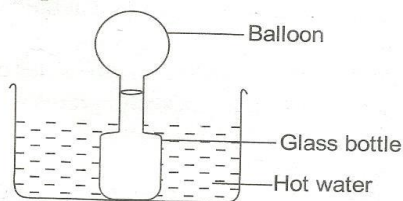
18. The planet referred to as the morning or evening star is
- A. Jupiter
 - B. Mars
 - C. Venus
 - D. Mercury
19. Which of the following farm animals is correctly matched with its product ?
- | Animal | Product |
|------------|----------|
| A. Sheep | - Milk |
| B. Cow | - Eggs |
| C. Goat | - Mohair |
| D. Chicken | - Wool |
20. Which of the following are non-living components of environment ?
- A. Water and soil
 - B. Plants and animals
 - C. Air and plants
 - D. Water and animals
21. The BEST way to prevent HIV/AIDS among the married is
- A. abstinence
 - B. use of condoms
 - C. being faithful
 - D. going for tests regularly
22. Valves in human body are found in the
- A. heart and lungs
 - B. veins and arteries
 - C. lungs and arteries
 - D. heart and arteries
23. The experiment below was done by learners.



SCIENCE STD. 7

CLASS 7 SCIENCE END TERM 1 2020

- The cut section was observed. Which process in plants were they investigating ?
 A. Transport B. Absorption
 C. Photosynthesis D. Transpiration
24. Which of the following plants cannot make their own food ?
 A. Puffball and mushroom
 B. Cedar and pine
 C. Toadstool and maize
 D. Cypress and mushroom
25. Which of the following processes require increase in temperature ?
 A. Evaporation and condensation
 B. Melting and freezing
 C. Evaporation and melting
 D. Condensation and freezing
26. Which of the following is a minor component of the environment ?
 A. Air B. Soil
 C. Heat D. Plants
27. Which of these drugs is an inhalant ?
 A. Bhang B. Cocaine
 C. Petrol D. Khat
28. Freezing preserves food by
 A. removing water from food
 B. killing the micro-organisms
 C. making the food wet
 D. making micro-organisms inactive
29. Which of the following is NOT an industrial use of water ?
 A. Mixing chemicals
 B. Watering animals
 C. Making a fountain
 D. Cooling machines
30. Study the experiment below done by some pupils.

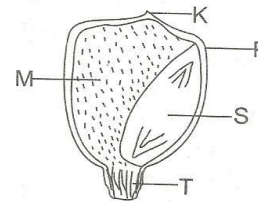


- They concluded that
 A. liquids expand when heated
 B. balloons contract when heated
 C. air expands when heated
 D. glass expands when heated

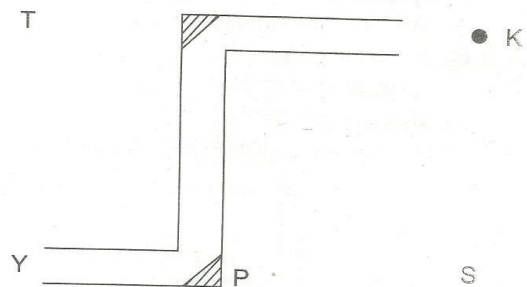
CAT 003

3

31. Drugs given to a person to provide immunity against diseases are called
 A. vaccines B. curatives
 C. vitamins D. pain relievers
32. Fibre is important in the diet because
 A. it helps in smooth movement of food in the body
 B. it helps in absorption of food
 C. it assists in breakdown of food
 D. it adds nutrients in the body
33. The diagram below shows a seed. Which letter represents style scar ?



- A. K B. T
 C. S D. M
34. Which of the following body fluids may LEAST contain HIV Virus ?
 A. Semen B. Blood
 C. Breast milk D. Saliva
35. Which of the following parts of the digestive system is correctly matched with its function ?
 A. Mouth - absorption of water
 B. Stomach - digestion of proteins
 C. Colon - absorption of food
 D. Gullet - production of digestive juice
36. The diagram below shows a periscope.

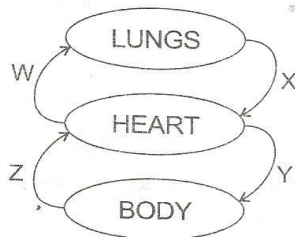


- If the real object is at point K, the image is likely to appear at point
 A. T B. P
 C. S D. Y

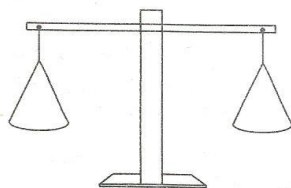
SCIENCE STD. 7

CLASS 7 SCIENCE END TERM 1 2020

37. A waterborne disease which is characterised with skin rashes and blood in stool is called
 A. tuberculosis B. typhoid
 C. bilharzia D. cholera
38. Which of these materials below allow light to pass through them clearly ?
 A. Kerosene and spectacles
 B. Milk and dirty water
 C. Skylight and frosted glass
 D. Bathroom windows and milk
39. Livestock feeds that are harvested and stored while still green are called
 A. hay B. silage
 C. pasture D. concentrates
40. The diagram below show how blood flows in the body.



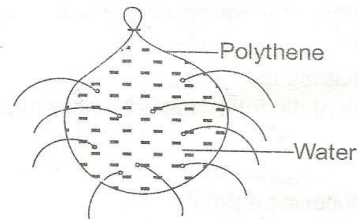
- Which of the following is TRUE vessel ?
 A. Z is pulmonary artery
 B. Y has valves
 C. W carries deoxygenated blood
 D. X carries dark red blood
41. The type of teeth that are shed last are
 A. premolars B. molars
 C. incisors D. canines
42. Which of the following is a characteristic of cumulus clouds ?
 A. Are dark grey in colour
 B. Found low in the sky
 C. Indicate fine weather
 D. Bring heavy rainfall
43. The instrument below is used to compare



- A. mass B. size
 C. weight D. volume

CAT 003

44. Animals are useful to plants for
 A. pollination B. fertilization
 C. photosynthesis D. transpiration
45. Soil with the fastest drainage also
 A. is the best for farming
 B. has a lot of humus
 C. spreads easily
 D. has the fastest capillarity
46. The component of air that takes 0.97% of air can be used to
 A. make soft drinks
 B. make plant food
 C. make things burn
 D. make light bulbs
47. Which of the following disease is immunisable but not communicable ?
 A. Tetanus B. Malaria
 C. Typhoid D. Tuberculosis
48. Which of the statements below describes sheet erosion ?
 A. Small holes on the ground
 B. Small channels on the ground
 C. Thin layer of soil missing
 D. Deep channels on the ground
49. Learners did the experiment below.



They concluded that

- A. pressure in liquids increase with depth
 B. liquids exert pressure in all directions
 C. pressure in liquids is equal at the same level
 D. liquids exert pressure on the sides only
50. Which of these pests destroys grains where they are stored ?
 A. Cutworms
 B. Weevils
 C. Aphids
 D. Stalkborer