

CLASS 5 SCIENCE END TERM 1 2020

1. Digestion of food does not take place in the
 - A. large intestine
 - B. stomach
 - C. mouth
 - D. small intestine
2. The following are uses of water in the farm. Which one is not?
 - A. Watering animals
 - B. Keeping fish
 - C. Mixing chemicals
 - D. Surfing
3. The following are importance of lighting a house properly. Which one is not?
 - A. We are able to see clearly
 - B. We use light for ironing clothes
 - C. To enable us read comfortably
 - D. To avoid accidents
4. Which one of the following is a way of lighting a house using artificial sources?
 - A. Use of lantern
 - B. Opening windows to light a house
 - C. Using skylight
 - D. Opening doors to light a house
5. Which one is not a good behaviour when having meals?
 - A. Chewing food with mouth closed
 - B. Talking with food in the mouth
 - C. Chewing food properly before swallowing
 - D. Eating reasonable quantities of food at a time
6. Which animal has a different type of movement from the others?
 - A. Ostrich
 - B. Bat
 - C. Butterfly
 - D. Housefly
7. Which of the following does not help an animal to grow healthy?
 - A. Proper housing
 - B. Proper feeding
 - C. Adding manure
 - D. Medical care
8. Which of the following are products obtained from a sheep?
 - A. Mohair and mutton
 - B. Wool and mutton
 - C. Beef and milk
 - D. Eggs and wool
9. Which of the following shows proper storage of medicine?
 - A. Storing medicine in a locked cupboard
 - B. Storing medicine in soda bottles
 - C. Storing medicine where children can easily reach
 - D. Storing medicine in containers that are not labelled
10. The following are sources of heat except
 - A. gas
 - B. moon
 - C. sun
 - D. fire

CAT 003

1

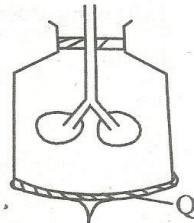
SCIENCE STD. 5

CLASS 5 SCIENCE END TERM 1 2020

11. The part of the breathing system which has been kept open by the C-shaped rings called cartilages is the
- A. airsacs B. trachea
C. bronchioles D. bronchus

12. Which of these weeds produces poisonous fruits?
- A. Black jack B. Pig weed
C. Oxalis D. Sodom apple

13. The diagram below represents the model of the breathing system.



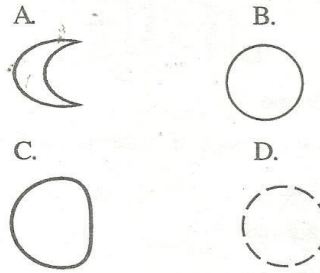
The part marked Q represents the

- A. diaphragm B. bronchus
C. lungs D. trachea
14. Which one of the following does not make up organic matter in the soil?
- A. Dead parts of animals
B. Dead rotting plants
C. Waste from animals
D. Broken bottles
15. The following are sources of sound except
- A. bell B. drum
C. whistle D. lamp
16. Which one is a safety precaution when handling chemicals at home?
- A. Do not eat while handling chemicals
B. Some chemicals can be tasted
C. Spray chemicals when windows and doors are closed
D. Do not wash hands after handling chemicals

17. Which one of the following animals burrow in the ground to make a home?

A. Monkey B. Mole
C. Dog D. Grasshopper

18. Which of the following phases of the moon is the new moon?



19. Which one of the following is not a basic food group?

A. Energy giving foods
B. Body building foods
C. Sweet foods
D. Protective foods

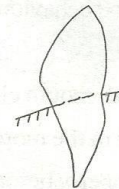
20. Which one is a beverage crop?

A. Sisal B. Coffee
C. Rice D. Cotton

21. Three of the following foods belong to the same food group. Which one does not?

A. Peas B. Greengrams
C. Beans D. Green bananas

22. The type of teeth shown below is used for



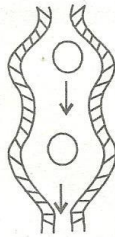
A. tearing B. biting
C. cutting D. chewing

CLASS 5 SCIENCE END TERM 1 2020

23. Which of these materials can be used in making rollers?

- A. Round sticks B. Papers
- C. Cotton wool D. Sand

24. Food passes through the oesophagus slowly in a wave-like manner as shown below.



The process is called

- A. digestion B. egestion
 - C. peristalsis D. absorption
25. The following are personal items except
- A. handkerchief B. toothbrush
 - C. towel D. plate
26. The following small animal protects itself by stinging. Which one is it?
- A. Housefly B. Rat
 - C. Grasshopper D. Wasp
27. Which one of the following processes takes place at the anus?
- A. Digestion
 - B. Egestion
 - C. Peristalsis
 - D. Absorption
28. Which one of the following will float on water?
- A. A long piece of wood
 - B. A small stone
 - C. A small piece of wire
 - D. A long wire

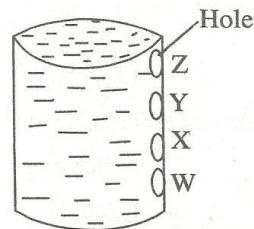
29. Handles of tools should be

- A. rough and loosely fixed
- B. smooth and loosely fixed
- C. smooth and tightly fixed
- D. rough and tightly fixed

30. Filtering makes water clean by

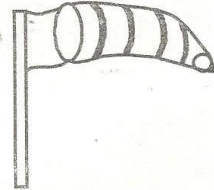
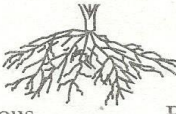
- A. removing taste B. removing colour
- C. killing germs D. removing dirt

31. Std 4 pupils carried out an activity to find out the relationship between pressure and depth in liquids. Which hole labelled W, X, Y and Z jets out water furthest distance from the tin?



- A. Z B. Y
 - C. X D. W
32. Which one of the following is not a problem related to teeth?
- A. Shedding of teeth B. Bad breath
 - C. Tooth decay D. Cavities
33. Which sense organ helps us know whether food is salty or not?
- A. Eyes B. Nose
 - C. Ears D. Tongue
34. AIDS is caused by
- A. syndrome B. immunity
 - C. deficiency D. HIV
35. The ability of the body to protect itself against diseases is known as
- A. nutrition B. syndrome
 - C. immunity D. vaccine

CLASS 5 SCIENCE END TERM 1 2020

36. The following organisms live in the soil. Which one does not?
A. Earthworm B. Millipede
C. Antlion D. Butterfly
37. The following are chemicals used at home except
A. paraffin B. washing powder
C. water D. disinfectants
38. Which of the following is a non-green plant?
A. Mushroom B. Fern
C. Algae D. Cypress
39. When breathing in air is warmed at the
A. air sacs B. bronchioles
C. nose D. lungs
40. It is easy to drive a nail into a wood using a
A. saw B. hammer
C. panga D. jembe
41. Oiling tools prevents them from
A. becoming blunt B. decaying
C. rusting D. drying
42. Medicine that are taken to reduce pain are known as
A. curatives B. painkillers
C. antibiotics D. vaccines
43. The type of clouds which are dark grey in colour and bring heavy rainfall are called
A. nimbus B. cumulus
C. stratus D. cirrus
44. The sun is a star. It looks larger than the other stars because it is
A. too bright
B. too hot
C. closer to the earth than the other stars
D. seen during daytime
45. The following are functions of roots. Which one is not?
A. Absorption water
B. Supporting other parts of the plant
C. Storing food
D. Making plant food
46. The weather instrument shown below is called

A. raingauge B. windvane
C. thermometer D. windsock
47. If a radio is placed at the centre of the classroom, everyone in class hears the sound. This shows that sound
A. travels in a straight line
B. travels in all directions
C. cannot pass through walls
D. is a source of heat
48. Which one of the following is not a fungal infection?
A. Dandruff
B. Yeast
C. Athlete's foot
D. Ringworm
49. The type of root system shown below is called

A. fibrous B. tap root
C. parallel D. network
50. The green colouring matter in a plant is called
A. stomata B. fungus
C. chlorophyll D. veins