

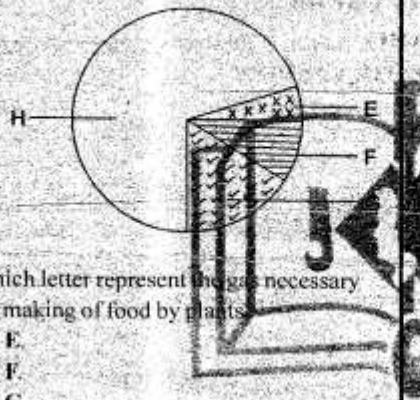
STD 7 MID TERM 3 EXAM 2019

SCIENCE

1. Shedding of teeth starts at the age of
- 6 months.
 - 6 years.
 - 9 months.
 - 12 years.

2. A simple circuit is made up of the following EXCEPT
- dry cells
 - bulb.
 - insulator.
 - wire.

3. The chart below represents components of air.



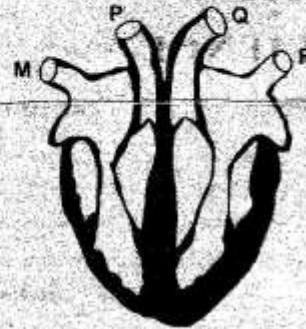
Which letter represent the gas necessary for making of food by plants

- E.
- F.
- G.
- H.

4. At the end of digestion process, undigested food material is **LIKELY** to be found in the
- small intestine.
 - large intestine.
 - stomach.
 - rectum.

5. Which one **CORRECTLY** shows the procedure of separating sand and salt?
- Sieving → dissolve → evaporate.
 - Dissolve → evaporate → filter.
 - Dissolve → filter → evaporate.
 - Decant → filter → evaporate.

6. The diagram below represents a mammalian heart.



Which one of the following statement is **TRUE** about the heart above?

- M carries blood rich in oxygen.
- R carries blood from the lungs.
- Q is the main vein.
- P carries oxygenated blood.

7. Jane's mother had taken more medicine than required. The **BEST** thing for her to do was to

- take a lot of water.
- search for the remedy in the internet.
- report to the health centre and seek advice.
- ask a patient who had a similar incident.

8. Wearing protective clothing when working in stagnant water can help prevent

- malaria and typhoid.
- malaria and bilharzia.
- tetanus and malaria.
- cholera and bilharzia.

9. Which one of the following is an example of an illegal drug in Kenya?

- Bhang.
- Tobacco.
- Alcohol.
- Khat.

10. The **BEST** preventive measure against spread of HIV among the adolescents is
- circumcision.
 - abstinence.
 - use of condoms.
 - seek medical attention.

11. Which of the following is a green plant?
- Algae.
 - Toadstool.
 - Puffball.
 - Mushroom.

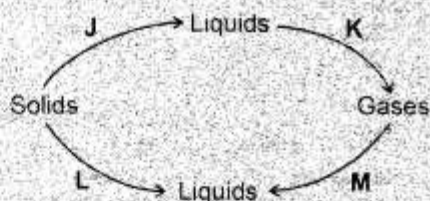
12. Which one of the following sets of plants consists of cereal crops **ONLY**?
- Maize, millet, sorghum.
 - Rice, wheat, arrowroots.
 - Millet, beans, green grams.
 - Wheat, cassava, sweet potatoes.

13. Which of the following is friction **NOT** necessary?
- Cleaning the floor.
 - Erasing.
 - Writing.
 - Walking.

14. Energy can be defined as
- a push or a pull.
 - a force that opposes motion.
 - ability to do work.
 - a change of state.

15. Below are characteristics of a certain animal.
- Warm blooded.
 - Lay eggs.
 - Its body is covered with scales.
 - Has mammary glands.
 - Breath through lungs.
- Which of the characteristics above will fit a bat and a toad **RESPECTIVELY**?
- (i) and (ii)
 - (ii) and (iv)
 - (iii) and (v)
 - (ii) and (v)

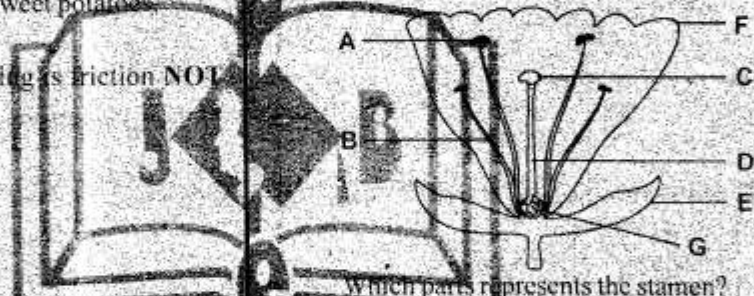
16. The diagram below shows changes of states of matter.



Name the process **K** and **L** **RESPECTIVELY**.

- Condensation and melting.
- Condensation and freezing.
- Evaporation and melting.
- Evaporation and freezing.

17. The diagram below shows parts of a flower.



Which parts represents the stamen?

- A and B
 - C and D
 - E and F
 - D and E
18. Which of the following statements is **UNTRUE** about soil?
- Sand soil has the best drainage.
 - Humus is made up of dead plants and animals.
 - Loam soil makes the longest ribbons.
 - Soil contains living organisms.

19. The following are some liquids:

- i) Kerosene.
- ii) Spirit.
- iii) Diesel.
- iv) Petrol.
- v) Water.

Which of the above will **NOT** make a uniform solution?

- A. (i) and (iv)
- B. (iii) and (iv)
- C. (iv) and (v)
- D. (ii) and (v)

20. Which one of the following is **NOT** an electric appliance used at home?

- A. Torch.
- B. Radio.
- C. Iron box.
- D. Television.

21. Which one of the following is a source of light?

- A. Fire.
- B. Skylights.
- C. Matches.
- D. Gas.

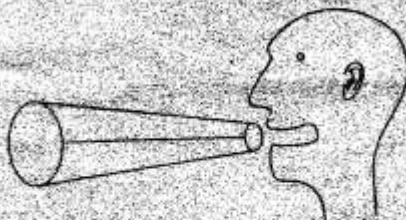
22. Which of the following takes place during breathing out?

- A. Lungs expand.
- B. Ribs move outwards and downwards.
- C. The diaphragm flattens.
- D. Chest volume decreases.

23. The following are safety measures when dealing with electricity **EXCEPT**

- A. Not touching switches with wet hands.
- B. Not overloading sockets.
- C. Fitting lightning arresters.
- D. Not inserting objects into sockets.

24. During a Science lesson pupils made an instrument shown below by folding a piece of paper to the shape shown.



The pupils concluded that sound

- A. can be amplified.
- B. travels faster in air.
- C. travels in all directions.
- D. travels in a straight line.

25. Both internal and external animal parasites can be controlled by

- A. dipping.
- B. deworming.
- C. proper sanitation.
- D. rotational grazing.

26. The following are reasons for lightning a house. Which one is **NOT**?

- A. Discouraging pest.
- B. Warning the house.
- C. To see clearly.
- D. For safety in the house.

27. Which one of the following is **NOT** an effect of drugs on health?

- A. Loss of consciousness.
- B. Addiction.
- C. Accidents.
- D. Lack of concentration.

28. A mixture of wheat flour and beans can **BEST** be separated by

- A. sieving.
- B. filtering.
- C. decanting.
- D. winnowing.

29. Which of the following group of materials represent bad conductors of electricity.

- A. Glass, dry wood, rubber.
- B. Iron rod, aluminium, wood.
- C. Copper, plastic, copper.
- D. Steel, iron, copper.

30. Friction can be reduced by all the following ways EXCEPT

- A. greasing.
- B. streamlining.
- C. treading.
- D. use of roller.

31. During a nature walk std. 7 pupils saw birds on a wheat farm. They asked their teacher for the best method to control the birds. Which of the following would be the BEST method?

- A. Scaring.
- B. Trapping.
- C. Spraying.
- D. Handpicking.

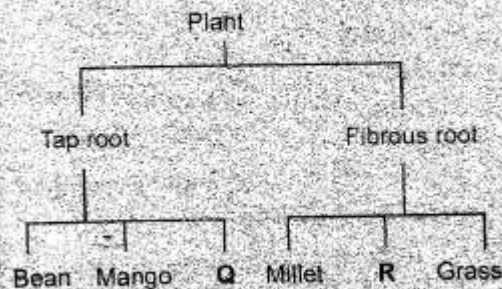
32. In testing the soil components, the use of heat is required to test for

- A. air and water.
- B. water only.
- C. organic matter and water.
- D. living organisms and water.

33. During adolescent both boys and girls experience;

- A. growth of beards.
- B. broadening of shoulders and chest.
- C. deepening of voice.
- D. increase in height and weight.

34. Study the classification below and answer the question that follows.



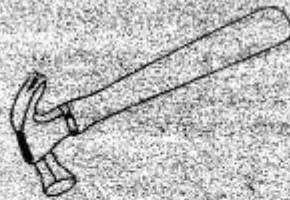
Which of the following pairs would fit at Q and R RESPECTIVELY?

- A. Cabbage and maize.
- B. Napier grass and sugarcane.
- C. Peas and acacia.
- D. sorghum and rice.

35. Which one of the following is a COMMON effect of both Alcohol and tobacco?

- A. Brain damage.
- B. Addiction.
- C. Stammering and stammering.
- D. Lips and mouth cancer.

36. The diagram below shows a simple machine.



The simple machine above works the same as a

- A. crowbar.
- B. wheelbarrow.
- C. spade.
- D. saw.

37. In an experiment on miscible and immiscible liquids, std 7 pupils had the following liquids.

- i) Water.
- ii) Cooking oil.
- iii) Diesel.
- iv) Petrol.
- v) Milk.

Which of the following represent liquids that formed a uniform solution?

- A. (iii) and (iv)
- B. (i) and (iv)
- C. (iv) and (v)
- D. (ii) and (v)

38. Drainage in soils is **MOSTLY** affected by

- A. Amount of water.
- B. Colour of the soil.
- C. Size of soil particles.
- D. Amount of humus.

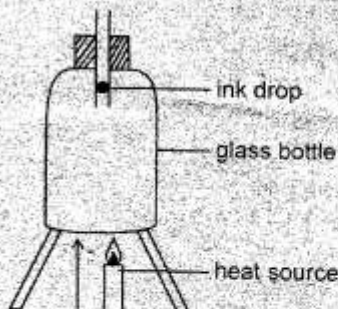
39. Bees protect themselves by

- A. stinging.
- B. flying away.
- C. coiling.
- D. biting.

40. In preparation of a compost pit or heap, ash is added to

- A. increase the content of the compost.
- B. Provide additional nutrients.
- C. Speed up decomposition.
- D. Prevent leaching.

41. The experiment below was used to investigate a certain property of matter.



The experiment was done to investigate

- A. expansion and contraction of liquids.
- B. capillarity in liquids.
- C. expansion and contraction in gases.
- D. expansion and contraction in solids.

42. The embryo of a plant is made up of

- A. stigma and style.
- B. cotyledon and testa.
- C. ovary and ovules.
- D. plumule and radicle.

43. Milk, meat and cooked beans can **BEST** be preserved by

- A. drying.
- B. use of low temperatures.
- C. drying.
- D. smoking.

44. For a material to reflect light, it should be

- A. shiny and opaque.
- B. smooth and translucent.
- C. rough and transparent.
- D. transparent and shiny.

45. A beam balance is used to

- A. measure force.
- B. measure the weight of objects.
- C. compare size of different objects.
- D. compare masses of objects.

46. Six pupils collected the following materials.

i) Mirror

ii) Water

iii) Basin

iv) White paper

The pupils were **LIKELY** to demonstrate

A. reflection of light.

B. making rainbow.

C. bending of light.

D. dispersion of light.

47. Which one of the following pair consist of storage pests?

A. Termites and weevils.

B. Weaver birds and cut worm.

C. Stalkborer and rodents.

D. Aphids and weevils.

48. Charcoal will float on water while a needle will sink due to the difference in

A. shape.

B. size.

C. mass.

D. material.

49. Which of the following materials will allow magnetism to pass through it?

A. Iron.

B. Tin.

C. Glass.

D. Steel.

50. Plants **DO NOT** provide animals with

A. medicine.

B. food.

C. shelter.

D. carbon dioxide.

