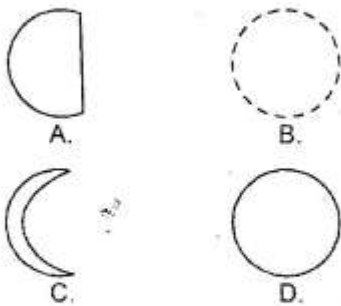


STD 5 MID TERM 3 EXAM 2019

SCIENCE

- The two **MAIN** types of crops are
 - oil and fibre
 - food and cash
 - fibre and crop
 - food and beverage
- Which one of the following components of soil consists of decaying plants and animals?
 - Air
 - Water
 - Organic matter
 - Inorganic matter
- If water is added to a container of dry soil, the level of water slowly reduces because of
 - water
 - plants
 - living things
 - air
- Eating of a diet that is not balanced and is not enough can lead to
 - rickets
 - anaemia
 - marasmus
 - kwashiorkor
- Which one of the following shapes of the moon is a full moon?



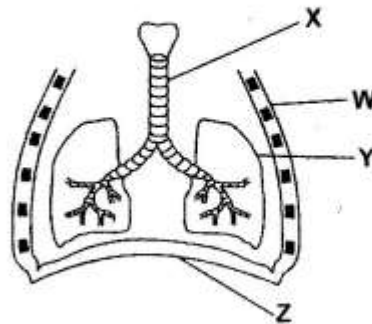
- When making water clean one of the following comes first. Which one?
 - Filtering water
 - Boiling water
 - Warming water
 - Storing water

- The type of tooth shown is



- incisor
 - canine
 - molar
 - pre-molar
- When the arrow head of a windvane points South, wind is blowing from
 - South
 - North
 - East
 - West
 - Which of the following is **NOT** a fungi?
 - Fern
 - Penicillin
 - Mushroom
 - Toadstool
 - The heat from the sun reaches the earth by
 - convection
 - radiation
 - conduction
 - reflection

Use the diagram to answer question 11-13



- Which part represents the glass tube in the breathing system model shown?
 - X
 - Y
 - W
 - Z

12. The part marked Z is called

- A. ribs
- B. chest
- C. lungs
- D. diaphragm

13. When we breath in, the part labelled Y

- A. moves outwards.
- B. moves inwards.
- C. does not move.
- D. moves upside down.

14. Clay soil has the **HIGHEST** capillarity, this is because of its

- A. colour
- B. texture
- C. air
- D. the size of particles

15. Which one of the following is the **FIRST** stage of HIV infection?

- A. Full blown
- B. Asymptomatic
- C. Window
- D. Symptomatic

16. Which one of the following plants stores food in the stem?

- A. Onion
- B. Carrot
- C. Sweet potatoes
- D. Irish potatoes

17. The way we behave when taking meals is called

- A. table manners
- B. food manners
- C. happy times
- D. house manners

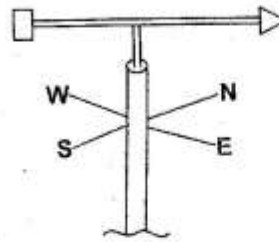
18. The deficiency disease caused by lack of iron is called

- A. marasmus
- B. kwashiokor
- C. goitre
- D. anaemia

19. Which of the following is an amphibian.

- A. Newt
- B. Slug
- C. Snake
- D. Mite

20. The weather instrument shown below is used to measure



- A. speed of wind only.
- B. direction of wind only.
- C. direction and speed of wind only.
- D. amount of wind in a particular place only.

21. The removal of undigested food from the body is called

- A. villi
- B. faeces
- C. digestion
- D. egestion

22. The type of medicine which is used to prevent diseases is known as

- A. vaccines
- B. curatives
- C. supplements
- D. pain relieves

23. HIV virus can be found in the following body fluids **EXCEPT**

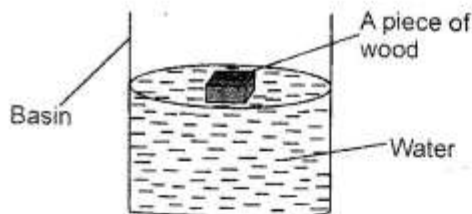
- A. blood
- B. semen
- C. urine
- D. saliva

24. The amount of medicine taken at a particular time is known as
- vaccine
 - dosage
 - injection
 - prescription

25. Exchange of gases in the human breathing system takes place in the
- trachea
 - bronchus
 - diaphragm
 - air sacs

26. Which of the following is **NOT** a true insect?
- Bees
 - Spiders
 - Butterflies
 - Houseflies

27. Which of the following factors made the wood to float?



- Shape
- Size
- Volume
- Type of material

28. The teeth used for cutting
- have ridges
 - have two roots
 - are chisel shaped
 - are sharp and pointed

29. Below are functions of the roots in a plant **EXCEPT**
- support
 - making food
 - food storage
 - absorption

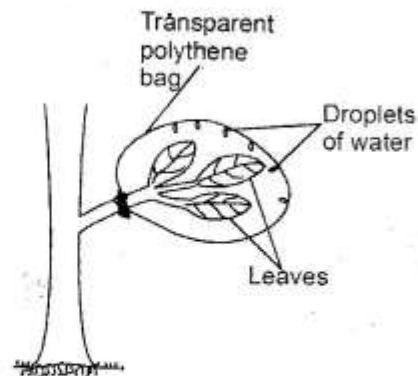
30. Which of the following **CANNOT** be seen at night?
- Sun
 - Moon
 - Clouds
 - Stars

31. A snail moves by
- crawling
 - gliding
 - galloping
 - slithering

32. Which type of food gives us **BOTH** energy giving and body building?
- Beans
 - Peas
 - Wheat
 - Groundnuts

33. The following are examples of poultry **EXCEPT** one. Which one is it?
- Duck
 - Chicken
 - Eagle
 - Turkey

34. Pupils in a class five Blue set out the experiment shown. Which process were they testing?



- Breathing
- Absorption
- Evaporation
- Transpiration

35. Which of the following is **NOT** a means of water transport?
- Ferry
 - Boat
 - Canoe
 - Motor cycle

36. Which animal removes solid waste in form of pellets?

- A. Dog B. Cow
C. Goat D. Donkey

37. In the digestive absorption of mineral salts takes place in the

- A. mouth
B. stomach
C. small intestines
D. large intestines.

38. Which type of soil has the roughest texture?

- A. Clay B. Sand
C. Silt D. Loam

39. How does a snail protect itself?

- A. Coiling itself.
B. It hides in its shell.
C. Changing its colour.
D. Rolling itself into a ball.

40. The following tools need oiling EXCEPT

- A. panga
B. saw
C. jembe
D. stainless steel knife

41. The tooth drawn below is called



- A. canine B. incisor
C. molar D. premolar

42. Chicken kept for meat is called

- A. litter
B. layers
C. broilers
D. dairy

43. Expiry date is the date

- A. show prescription.
B. before which medicine should be used.
C. after which medicine should not be used
D. show the date the medicine was manufactured.

44. The small holes in leaves are called

- A. stalk B. air sacs
C. chlorophyll D. stomata

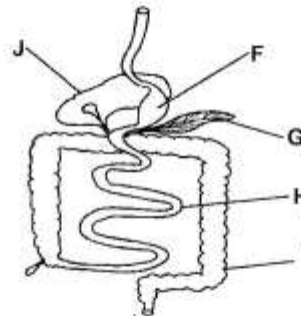
45. The following are modes of transmission of HIV/AIDS. Which one is NOT?

- A. Mosquito bites.
B. Sexual intercourse.
C. Blood transfusion
D. Sharing piercing tools.

46. Which of the following produces natural light at night?

- A. Firefly B. Candle
C. Torch D. Sun

Study the diagram below and answer question 47-50



47. The part labelled H is

- A. lungs
B. diaphragm
C. large intestines
D. small intestines

48. The part marked G is

- A. pancreas B. liver
C. stomach D. colon

49. Absorption of the undigested food and mineral water is done at the part marked

- A. J B. F
C. G D. I

50. Which one of the following is NOT a source of heat?

- A. Gas B. Torch
C. Sun D. Electricity