


STD 6 END TERM 3 EXAM 2019

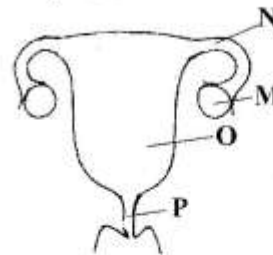
SCIENCE

- Green plants make their own food in the
 - flowers.
 - stems.
 - roots.
 - leaves.
- Which of the following is not an agent of pollination?
 - Soil
 - Wind
 - Insects
 - Birds
- Which one of the following diseases can only be immunised against when there is an outbreak?
 - Tuberculosis
 - Measles
 - Typhoid
 - Yellow fever.
- The diagram below shows a type of teeth. The type of teeth is used for


 - Tearing flesh
 - Chewing food
 - Grinding food
 - Cutting flesh.
- The following are functions of the stem in plants except
 - transports water absorbed by the roots.
 - offers support to the branches and leaves.
 - absorbs minerals salts and water.
 - storage of food in some plants.
- Pressure in liquids increases with
 - height.
 - temperature.
 - volume.
 - depth.
- The part of the rain gauge raised above the soil helps in
 - reducing evaporation.
 - avoiding splashing.
 - making it stable.
 - increasing water collection.
- In the human body, absorption of digested food takes place in the
 - rectum.
 - small intestine.
 - large intestine.
 - duodenum.

- Which of the following weeds can be used as a pesticide?
 - Oxalis
 - Mexican marigold
 - Thorn apple
 - Black jack.

- The diagram below shows the female reproductive system.



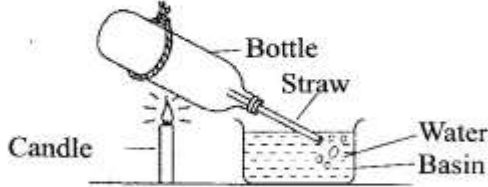
Identify the correct names of the parts labelled M, N, O and P.

- | M | N | O | P |
|----------------|---------|-------------|-------------|
| A. Oviduct | uterus | birth canal | Ovary |
| B. Ovary | Oviduct | uterus | birth canal |
| C. Ovary | uterus | birth canal | Oviduct |
| D. birth canal | uterus | Ovary | Oviduct |
- Heat energy from hot part of a metal moves to cooler part through
 - convection.
 - conduction.
 - air.
 - radiation.
 - The best method of preserving milk is by
 - smoking.
 - canning.
 - drying.
 - freezing.
 - A farmer can reduce soil erosion in his steep sloping farm by all the following except
 - planting cover crops.
 - building terraces.
 - applying manure.
 - contour farming.

14. Which one of the following is not an immunisable disease?

- A. Tetanus
- B. Diphtheria
- C. Marasmus
- D. Whooping cough.

15. Class six pupils set up an experiment to investigate the effects of heat on matter as shown below.



Which of the following is **not true** about the set up?

- A. Bubbles came out because of the expansion of air
- B. More bubbles were seen long after heating stopped
- C. Water entered the straw when heating stopped
- D. The air in the bottle expanded because of heating

16. All the following are additives in commercial feeds **except**

- A. salt licks.
- B. roughage.
- C. fishmeal.
- D. bone meal.

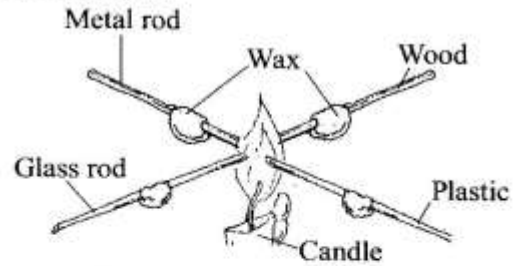
17. Which one of the following is not a traditional method of preserving food?

- A. Canning
- B. Drying
- C. Use of honey
- D. Smoking

18. Which of the following pairs of weather instrument are used to measure the same aspects of weather?

- A. Air thermometer, water thermometer
- B. Windsock, air thermometer
- C. Air thermometer, wind vane
- D. Rain gauge, water thermometer

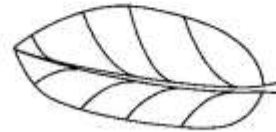
19. Class five pupils set up an experiment as shown below.



In which of the materials was wax first to melt?

- A. Metal rod
- B. Glass rod
- C. Wooden stick
- D. Plastic rod

20. Class six pupils observed a plant that had leaves like the one shown below.



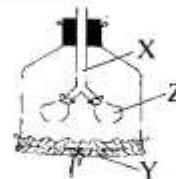
The leaf was **likely** to be observed in all the following plants except on

- A. ground nuts.
- B. Peas.
- C. coffee.
- D. Maize.

21. Which one of the following types of erosion is **likely** to be observed on a bear flat playing ground? _____ erosion.

- A. Rill
- B. Gully
- C. Sheet
- D. Splash .

22. The diagram below shows a model of the breathing system.



The part marked **XYZ** represents?

- | X | Y | Z |
|--------------|-----------|-----------|
| A. Lungs | trachea | diaphragm |
| B. Diaphragm | lungs | trachea |
| C. Trachea | lungs | diaphragm |
| D. Trachea | diaphragm | lungs. |

23. Nimbus clouds are known to have all the following characteristics **except**

- A. rain bearing.
- B. being dark grey in colour.
- C. being mountainous

24. Which one of the following plants **cannot** make its own food?

- A. Toadstool B. Moss
C. Fern D. Black jack

25. Which one of the following crops are **wrongly** matched to the parts we eat?

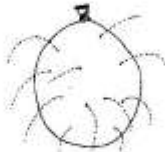
Parts eaten Crops

- A. Roots Cassava, carrot
B. Stems Irish potatoes, sugarcane
C. Leaves Kales, beans
D. Seeds Coffee, maize

26. Which one of the following parts of a bean seed comes out through the micropyle during germination?

- A. Plumule B. Radicle
C. Cotyledon D. Testa.

27. The diagram below represents an experiment carried out by class four pupils.



The experiment shows that

- A. Pressure in water increase with depth
B. Water flows faster from holes near the top
C. Water pressure acts in all directions
D. Pressure in water decrease with height.

28. Small animals can protect themselves by all the following except

- A. coiling. B. stinging.
C. hiding in shells. D. galloping.

29. A child is immunised against measles at the age of

- A. 9 months. B. 6 weeks.
C. 4 weeks. D. 10 weeks.

30. The transfer of heat in both water and air is **mainly** by

- A. conduction. B. convection.
C. radiation. D. condensation.

31. Which one of the following is not a waterborne disease?

- A. Malaria B. Cholera
C. Bilharzia D. Typhoid

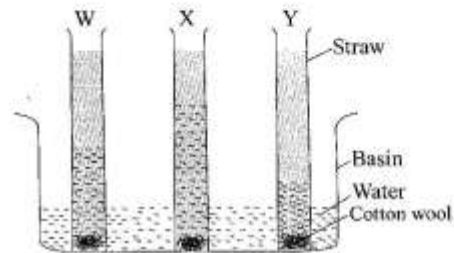
32. Ova are produced in the

- A. ovaries. B. testes.
C. oviduct. D. sperm duct.

33. Digestion in the alimentary canal starts in the

- A. mouth. B. gullet.
C. ileum. D. colon.

34. The diagram below shows capillarity in soil.



According to the level of water in the straw the soil samples in W, X and Y are

- | W | X | Y |
|---------|------|-------|
| A. Loam | clay | sand |
| B. Clay | loam | sand |
| C. Sand | clay | loam. |
| D. Loam | sand | clay |

35. Bean seeds put in a tin with ice cubes will not germinate mainly due to lack of

- A. moisture. B. warmth.
C. oxygen. D. light.

36. The cleaning of air in the breathing system occurs in the

- A. mouth. B. stomach.
C. nose. D. lungs.

37. Which one of the following is not part of the breathing system?

- A. Trachea B. Bronchus
C. Diaphragm D. Gullet.

38. Which one of the following properties of a gas is definite?

- A. Mass B. Size
C. Volume D. Shape

39. Which one of the following is not necessary during photosynthesis?

- A. Oxygen B. Carbon dioxide
C. Light D. Water.

40. Which one of the following pairs of fruits has only one seed?

- A. Passion fruit and orange
- B. Avocado and mango
- C. Pineapple and mango
- D. Orange and avocado.

41. A bottle top floats on water because of

- A. material.
- B. volume.
- C. shape.
- D. size.

42. Which one of the following methods is the best for controlling weeds on a nursery bed?

- A. Digging them out
- B. Use of chemicals
- C. Uprooting
- D. Slashing

43. The readings from a rain gauge should be taken

- A. once a week.
- B. at different times of the day.
- C. at the same time every day.
- D. very early or late in the day.

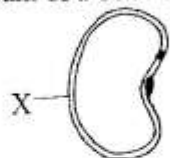
44. Which one of the following is very important to check when buying canned food?

- A. Manufacture date
- B. Expiry date
- C. Company's name
- D. Type of food.

45. The food nutrients that help our body tissues to grow are known as

- A. vitamins.
- B. supplements.
- C. carbohydrates.
- D. proteins.

46. Study the diagram of a bean seed below.



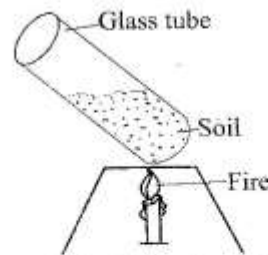
The part marked X is mainly useful in

- A. protecting the seed.
- B. storing food.
- C. allowing air into the seed.
- D. allowing the plumule out of the seed.

47. Which one of the following is not a use of light?

- A. For seeing
- B. Taking photos
- C. Growth of plants

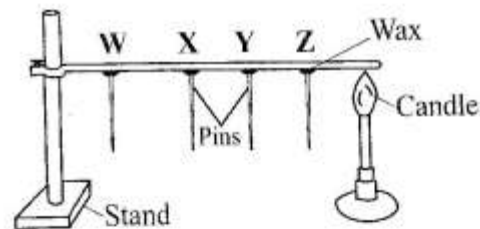
48. A pupil in class 6 placed soil in a glass tube and heated it gently for about ten minutes as shown below.



Which one of the following observations was made?

- A. Smoke was produced
- B. Bubbles were produced
- C. The soil turned brown
- D. Water settled at the bottom of the glass tube.

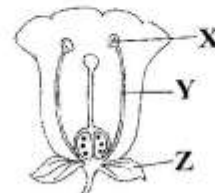
49. The diagram below shows a set up that was used to study heat transfer in solids.



Which pin dropped third after heating for some time?

- A. W
- B. X
- C. Y
- D. Z.

50. Class 6 pupil drew a flower as shown below.



What is the function of the part marked X?

- A. Produce ovules
- B. Produce pollen grains
- C. Support the anthers
- D. Protect the stigma.