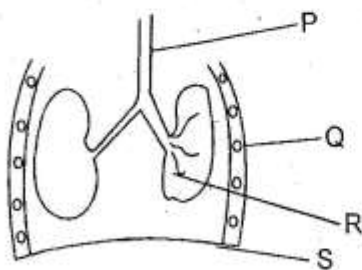


STD 5 END TERM 3 EXAM 2019

SCIENCE

1. The parts of the alimentary canal where digestion of food **does not** take place are
A. rectum and colon.
B. small intestine and oesophagus.
C. duodenum and mouth.
D. stomach and large intestine.
2. Which of the following is an industrial use of water?
A. Cooking.
B. Bathing.
C. Watering buildings.
D. Making fountains.
3. Which one of the following is a pair of **only** beverages?
A. Cotton and simsim.
B. Maize and beans.
C. Coffee and cocoa.
D. Tea and sunflower.
4. The diagram shown below represents breathing system.

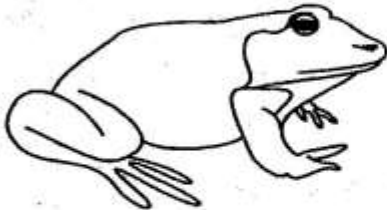


Which one of the labelled parts has rings?

- A. P B. R
C. S D. Q

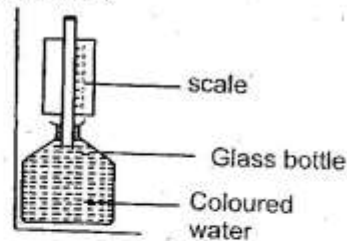
5. Which one of the following is a pair of only animals that produce mutton?
A. Goat and cattle
B. Sheep and pigs
C. Goat and sheep
D. Sheep and cattle
6. The natural home for any living things is referred to as
A. environment B. habitat
C. plants D. forest.
7. A fork jembe is used in
A. digging hard grounds
B. collecting rubbish
C. cutting hard metals
D. weeding.
8. The **most** appropriate weather for flying kites is
A. sunny B. rainy
C. cloudy D. windy
9. The absorption of water and mineral salts in digestive system are take place in the
A. duodenum
B. small intestine
C. stomach
D. large intestine
10. The type of soil with the best capillarity also
A. makes long ribbons
B. has a lot of air spaces
C. is appropriate for farming
D. spreads easily.
11. We use medicine for the following reasons **except**
A. curing diseases
B. keeping our bodies active
C. preventing diseases
D. relieving pain.

12. Which one of the following is a use of light?
 A. Warming.
 B. Drying.
 C. Reading comfortably.
 D. Cooking food.
13. The diagram below represents a certain animal.

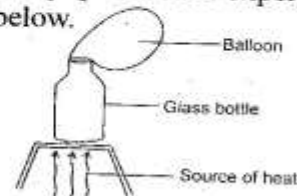


- Which of the following is **not** its characteristic? It
- A. has a moist skin
 B. lays fertilized eggs
 C. has varying body temperature
 D. partially live in water.
14. Which one of the following animals is an egg laying mammal?
 A. Spiny ant eater
 B. Whale
 C. Tortoise
 D. Bat
15. Insecticides are chemicals used to kill
 A. pests
 B. weeds
 C. insects
 D. worms.
16. The following are deciduous teeth. Which one is **not**?
 A. Premolars B. Molars
 C. Canines D. Incisors
17. Which one of the following is **not** a method of transporting water? Use of
 A. donkeys
 B. pipes
 C. tankers
 D. dams
18. The green colouring matter present in green plants is called
 A. colour
 B. pigment
 C. matter
 D. chlorophyll.

19. The diagram below represents a weather instrument.

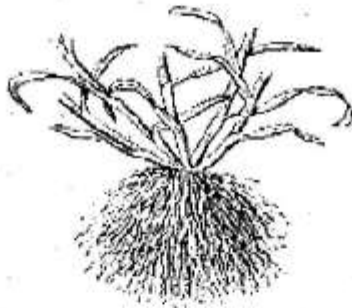


- Coloured water is used **mainly** to
- A. make it look beautiful
 B. record slight temperature change
 C. increase visibility
 D. enable the liquid expand well.
20. The following are poor conductors of heat. Which one is **not**?
 A. Wood B. Water
 C. Rubber D. Iron
21. Nimbus clouds have all the following characteristics **except** that they
 A. have a flat bottom
 B. bring a lot of rain
 C. found low in the sky
 D. have a dark grey colour.
22. Which one of the following tool maintenance practices is done when tools brake?
 A. Oiling B. Sharpening
 C. Repairing D. Cleaning
23. Which one of the following pair of processes only takes place when temperatures is increased?
 A. Evaporation and condensation.
 B. Condensation and freezing.
 C. Melting and evaporation.
 D. Melting and freezing.
24. Standard 5 pupils did the experiment shown below.



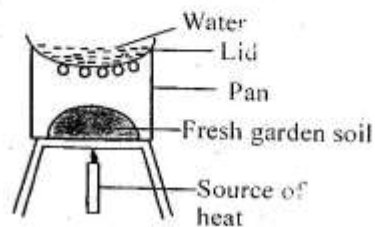
- The experiment was done **mainly** to show that
- A. air contracts on heating
 B. air expands on heating
 C. air occupies space
 D. air has mass.

25. Which one of the following is the first stage of HIV infections?
 A. Asymptomatic B. Incubation
 C. Fullblown D. Window
26. When sound is produced by an object, it will travel best through
 A. air B. gases
 C. solids D. liquids.
27. Which one of the following is a pair of materials required when making a beam balance?
 A. Tins and polythene bag.
 B. Board and string.
 C. Nail and rubberband.
 D. Y-trunk and string.
28. A broken piece of glass will sink when placed on water because of its
 A. type of material B. shape
 C. size D. mass.
29. The diagram below represents a type of a root systems.



- Which one of the following plants has a system like the one shown above?
 A. Cowpeas.
 B. Millet
 C. Cabbage.
 D. Avocado.
30. Which one of the following is an edible weed?
 A. Sodom apple.
 B. Pigweed.
 C. Mexican merigold.
 D. Wandering jew.
31. Which one of the following is a pair of only green non-flowering plants?
 A. Algae and fern.
 B. Mushroom and toadstool.
 C. Algae and grass.
 D. Maize and cotton.

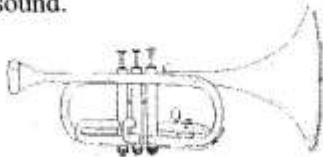
32. A common farm activity done during wet seasons is
 A. irrigation
 B. ploughing
 C. planting
 D. harvesting
33. The following are special sounds: Which one is **not**?
 A. Screaming.
 B. Drum beatings.
 C. Bell ringing.
 D. Hooting of a car.
34. The diagram below represents an experiment that was done by standard 4 pupils.



The observation made indicated presence of ____ in soil.

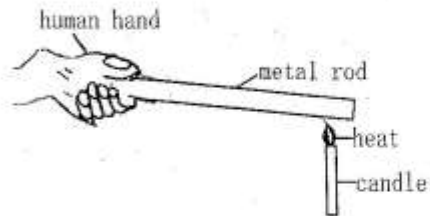
- A. air
 B. water
 C. living organism
 B. humus
35. Standard four pupils collected the following materials for their Science practical lesson.
 (i) A tin
 (ii) A nail
 (iii) Water
 (iv) Masking tape
 The pupils were likely preparing to investigate on
 A. how heat travels in water
 B. uses of water
 C. storage of water
 D. pressure in liquids.
36. Marasmus is a deficiency disease that is caused by lack of
 A. vitamin D
 B. proteins
 C. enough balanced diet
 D. fats and oils.

37. Standard five pupils collected different types of soil and felt each with their fingers. What were they investigating?
 A. Capillarity.
 B. Soil texture.
 C. Water retention ability.
 D. Drainage ability.
38. The type of food that repairs worn out body tissues are
 A. protective foods
 B. body building foods
 C. energy giving foods
 D. vitamins and minerals.
39. The quantity of medicine that is supposed to be taken at a certain time is called
 A. medicine
 B. prescription
 C. dosage
 D. drugs.
40. A windvane is a weather instrument that shows
 A. temperature and direction of wind
 B. direction and strength of wind
 C. strength of wind
 D. direction of wind only
41. The following are invertebrates **except**
 A. slugs B. termites
 C. crab D. lizard
42. The diagram below represents a source of sound.



- The instrument produces sound when
 A. blown B. beaten
 C. struck D. plucked.
43. Which one of the following animals **does not** have scales on its body?
 A. Duck B. Toad
 C. Chameleon D. Snake.
44. A special doctor who takes care of our eyes is called
 A. a nurse B. a dentist
 C. an optician D. a doctor.

45. Which one of the following is a pair of **only** fungi?
 A. Penicillin and mushroom.
 B. Algae and fern.
 C. Lichen and toadstool.
 D. Grass and millet.
46. Three of the following are birds. Which one is **not**?
 A. Owl B. Turkey
 C. Pigeon D. Bat
47. Standard 5 pupils performed the experiment shown below.



- The pupils were **most** likely investigating
 A. convection of heat
 B. conduction of heat
 C. radiation of heat
 D. good and poor conductors of heat.
48. Which one of the following is a symptom of rickets?
 A. Pale skin.
 B. Body dehydration.
 C. Knocked knees.
 D. Muscles wastage.
49. The process by which water changes to steam after heating is called
 A. evaporation
 B. melting
 C. condensation
 D. freezing.
50. Which one of the following does **not** take place when breathing in?
 A. The diaphragm flattens.
 B. The lungs contract.
 C. Ribs move upwards.
 D. Lungs get inflated.