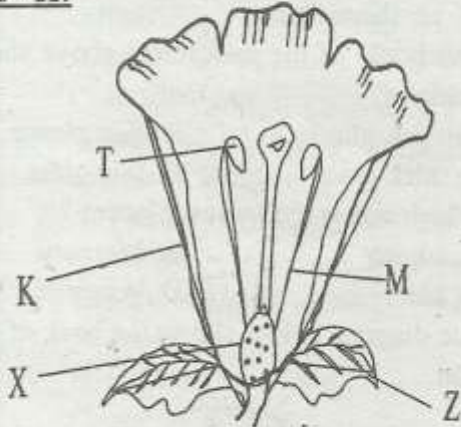


STD 8 END TERM 2 EXAM 2019

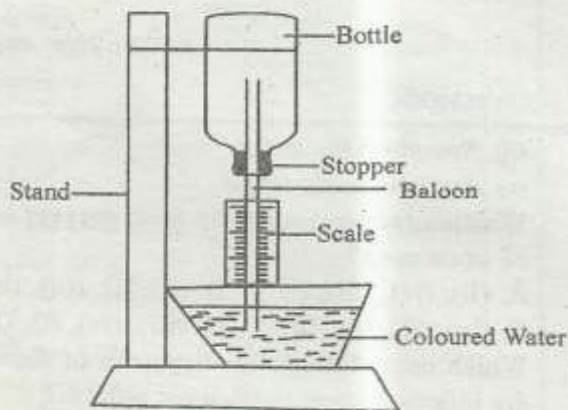
SCIENCE

I. YOUR NAME	II. NAME OF YOUR SCHOOL
<p>1. Which one of the following is incorrect about the placenta and embryo?</p> <p>A. The placenta allows gases to pass through B. The mother has the same blood group with the embryo C. The placenta always allows or passes the digested food to get to the foetus D. Placenta is porous material</p> <p>2. Which one of the following components of blood stops bleeding?</p> <p>A. Red blood cells B. Platelets C. White blood cells D. Plasma</p> <p>3. Which one of the following waste is excreted by all organs?</p> <p>A. Salts B. Urine C. Carbon dioxide D. Water</p> <p>4. Which one of the following is not an opportunistic disease to a person suffering from HIV?</p> <p>A. Malaria B. Cholera C. Tuberculosis D. Skin rash</p> <p>5. Which one shows the quality of a good toothbrush?</p> <p>A. Very hard B. Soft and large C. Very soft D. Middle size and soft</p> <p>6. Which STI can cause blindness or eye infection to the unborn babies?</p> <p>A. Syphilis B. Gonorrhoea C. Chancroid D. Genital herpes</p> <p>7. Which one of the following drugs causes hallucinations when abused?</p> <p>A. Alcohol B. Cocaine C. Heroin D. Khat</p> <p>8. The following are stages of HIV infection.</p> <p>i) <i>Full blown</i></p>	<p>iii) <i>Symptomatic stage</i> iv) <i>Asymptomatic stage</i></p> <p>Which arrangement shows their correct order of occurrence?</p> <p>A. (ii), (iv), (iii), (i) B. (ii), (i), (iii), (iv) C. (iv), (ii), (i), (iii) D. (iii), (iv), (i), (ii)</p> <p>9. Which one of the following pairs of diseases are infants immunised against at birth?</p> <p>A. Diphtheria and measles B. Tetanus and polio C. Whooping cough and polio D. Tuberculosis and polio</p> <p><u>Use the diagram below to answer questions 10 -11.</u></p> <div data-bbox="933 1008 1396 1433"></div> <p>10. Which part shows the one that will develop into a fruit?</p> <p>A. X B. T C. K D. M</p> <p>11. Which of these parts shows a pistil part?</p> <p>A. K B. Z C. M D. X.</p> <p>12. To protect themselves against browsers, some desert plants have</p> <p>A. Sunken stomata B. Unpleasant smell C. Reversed stomata opening</p>

13. Which one of the following plants is a mesophyte?

- A. Acacia B. Banana
C. Butter cup D. Murrum grass

The diagram below shows a weather instrument. Use it to answer questions 14 and 15.



14. The instrument shown above is called

- A. liquid thermometer
B. liquid pressure
C. rain gauge
D. air thermometer

15. The bottle of the instrument above should be made of

- A. thick plastic B. thin plastic
C. thick glass D. thin glass

16. Which one is the largest planet ?

- A. Jupiter B. Mercury
C. Mars D. Venus

17. The diagram below shows the beak of a given bird.



The bird is likely to feed on

- A. grains B. flesh
C. filter D. insects

18. Which one of the following is true about tilapia, frog and snake? They have

- A. moist skin
B. scales on bodies
C. changing body temperature
D. lungs to breathe

19. Commercial feeds have specific nutrients but lack

- A. water B. carbonhydrates
C. movements D. protein

20. The following are characteristics of a certain disease;-

- i) *Persistent diarrhoea*
ii) *Severe stomach and abdominal pains*
iii) *Dehydration*
iv) *Diarrhoea with mucus*

Which disease is this?

- A. Bilharzia B. Cholera
C. Dysentery D. Typhoid

21. The best type of water for laundry work is

- A. hard water B. soft water
C. mineral water D. sea water

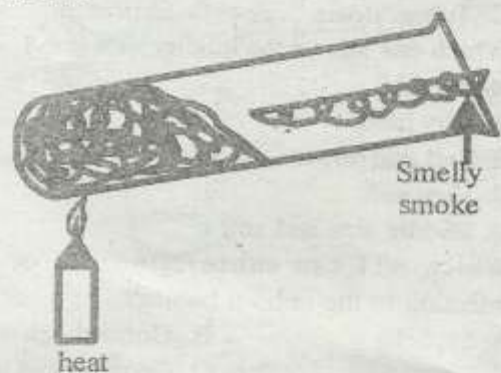
22. Growth of algae in water is caused by

- A. oil spillage
B. acid rain
C. uncontrolled farm chemicals
D. industrial effluent

23. Drip irrigation is an example of

- A. recycling water
B. reusing water
C. harvesting rain water
D. Using water sparingly

24. Standard four pupils carried out the experiment below.



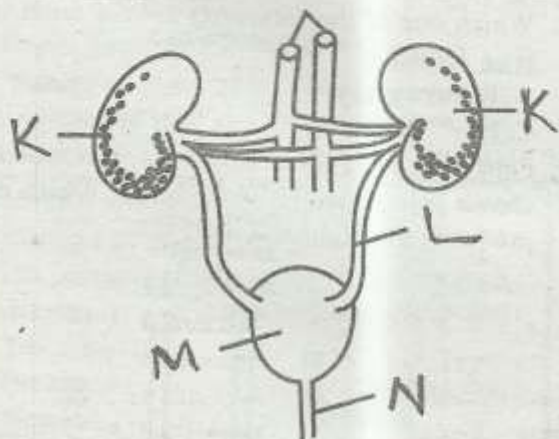
The experiment shows that soil has

- A. organic matter B. mineral salts
C. dead animals D. water

25. Among the following which one is not a compound fertilizer?

- A. Monoammonium phosphate (M.A.P.)
- B. Diamonium phosphate (D.A.P.)
- C. Nitrogen phosphorus and potassium (NPK)
- D. Calcium ammonium nitrate (CAN)

Use the diagram below to answer questions 26 - 27.

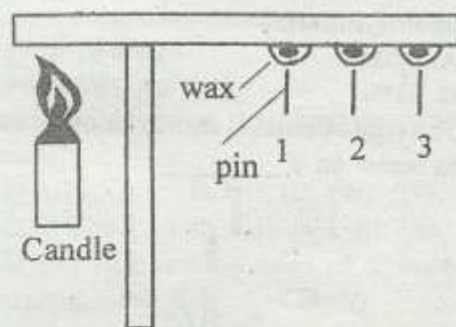


26. Ureter is marked
- A. L
 - B. N
 - C. K
 - D. M
27. Which part filters blood?
- A. M
 - B. L
 - C. K
 - D. N
28. Which one of the following is **not** a micro nutrients?
- A. Magnesium
 - B. Carbon dioxide
 - C. Iron
 - D. Copper
29. Which one of the following practices are **not** harmful to the soil?
- A. Ploughing along the slope
 - B. Disposal of vegetable refuse on soil
 - C. Burning of crop remains after harvest
 - D. Use of herbicides to control weeds
30. A child was seen with the following signs:-
- i) Feels very tired after doing small task
 - ii) Some parts of the body turn white
 - iii) Feeling dizzy
 - iv) The skin changes the colour

Which disease is the child suffering from?

- A. Rickets
 - B. Anaemia
 - C. Kwashiorkor
 - D. Marasmus
31. What is the importance of fibre in the diet?
- A. Body building

- B. Strong teeth
 - C. Helps in preventing constipation
 - D. mixes with food
32. What is the main function of colostrum?
- A. Bonds baby and mother
 - B. readily available
 - C. found at the right temperature
 - D. provide immunity to the baby
33. Standard five pupils carried out the experiment shown below.



Which nail dropped first?

- A. 3
 - B. 1
 - C. 2
 - D. None
34. The incoming ray that falls on the mirror is called
- A. reflected ray
 - B. reflected ray
 - C. incident ray
 - D. bouncing ray
35. Which one of the following is **not** a natural source of light?
- A. Firefly
 - B. Sun
 - C. Moon
 - D. Stars
36. The following are reasons for light **except**
- A. communication
 - B. warming
 - C. photosynthesis
 - D. making vitamin D
37. Which one of the following is a disadvantage of using a traditional jiko?
- A. It pollutes the air around us
 - B. It uses large amounts of charcoal
 - C. It takes along time when cooking
 - D. It conserves alot of charcoal
38. Which one of the following substances float on water?
- A. Wood
 - B. Sand
 - C. Pin
 - D. Nail
39. Which one of the following has a definite mass only?

- A. Water vapour
- B. Kerosene
- C. Ice grain
- D. A loaf of bread

40. Which of the following materials is magnetic?

- A. Copper
- B. Brass
- C. Zinc
- D. Steel

41. Which of the following liquids flow fastest?

- A. Petrol
- B. Cooking oil
- C. Grease
- D. Spirit

42. Which one of the following represents a component of air that is essential for photosynthesis?

- A. 0.03%
- B. 0.97%
- C. 21%
- D. 78%

43. The type of erosion shown below is most likely to occur on a _____

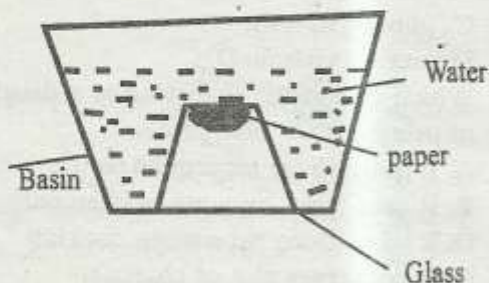


- A. gentle slope with heavy soil
- B. bare flat land with light soil
- C. steep slope
- D. mountain

44. Which one of the following is **not** a modern method of food preservation?

- A. Smoking
- B. Canning
- C. Drying
- D. Freezing

Study the experiment below and use it to answer the question.



45. During the experiment, pupils found out that the paper did not get wet. This is true because

- A. air exerts pressure

- C. air occupies space
- D. air is compressed

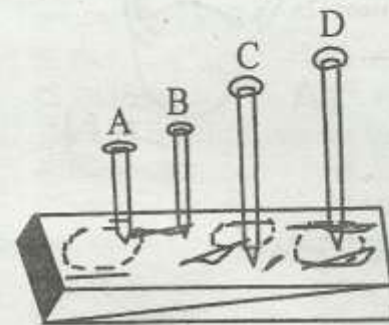
46. Which among the following small animals is the **odd** one out?

- A. Spider
- B. Mite
- C. Cricket
- D. Tick

47. Which one of the following animal feeds is a **true** fodder?

- A. Kikuyu grass
- B. Napier grass
- C. Hay
- D. Star grass

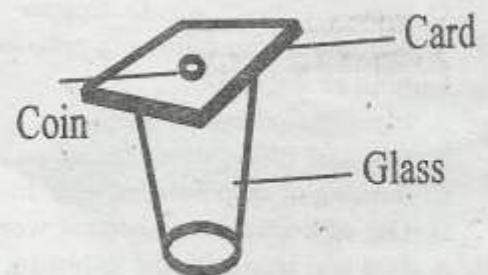
48. Four nails were fitted onto a piece of wood as shown below then hit using a rod. Which nail produced the highest sound?



49. Which one of the following is **not** a method of rotational grazing?

- A. Strip grazing
- B. Herding
- C. Paddocking
- D. Tethering

50. An empty glass was covered with a stiff paper and a coin was placed on top of the paper as shown below.



When the stiff card was pulled suddenly, the coin dropped in glass. This is because of

- A. inertia of motion
- B. friction between the card and coin
- C. inertia of rest
- D. gravitation pull

