

STD 7 END TERM 2 EXAM 2019

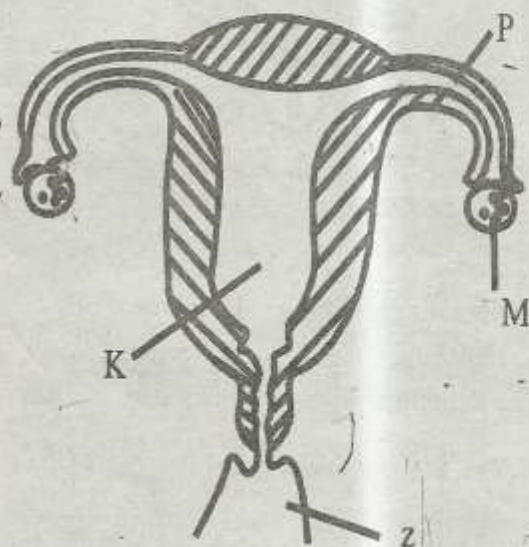
SCIENCE

I. YOUR NAME

II. NAME OF YOUR SCHOOL

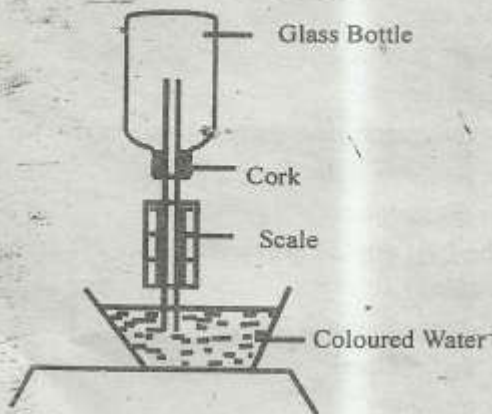
- Digested food materials, salt and other dissolved substance are found within
A. white blood cells B. haemoglobin
C. plasma D. platelets
- The following are statements about the mammalian heart. Which one is **true**?
A. The heart receives oxygenated blood in the right auricle
B. The heart has thick muscles surrounding the auricle
C. The heart has valves in it
D. The heart is divided into two chambers

Use the diagram below to answer question 3



- Where does implantation take place?
A. Z B. M
C. K D. P
- The cell formed immediately at conception is called
A. embryo B. foetus
C. morula D. zygote
- State the function of the C-shaped rings in the windpipe.
A. Prevent choking
B. Allow food to pass through
C. Keep it open at all times
D. Allow hair to pass through
- The blood vessel through which oxygenated blood flows out of the heart is the
A. venacava B. aorta
C. pulmonary vein D. pulmonary artery
- In order to maintain healthy teeth we should eat
A. cakes B. vegetables
C. sweets D. chocolate
- The date after which medicine should not be taken is called
A. expiry date
B. manufacturing dates
C. doctor's date
D. dosage date
- The **best** way of preventing HIV for unmarried people is through
A. medical check up
B. faithfulness
C. abstinence
D. ARV's
- Fertilisation in flowering plants takes place when
A. male nuclei in pollen grain and female nuclei in ovule fuse
B. a pollen tube enters the ovule
C. a pollen tube enters the ovary
D. a pollen grain falls on the stigma and germinates

11. Animals which feed on the remains of other animals are called
- A. saprophytes B. scavengers
C. predators D. prey
12. Three of the following green plants have fibrous roots except
- A. barley B. wheat
C. oats D. mango
13. The following are characteristics of a certain invertebrate:-
- i) *Have no scales*
ii) *Have a moist skin*
iii) *Fertilization is externally*
iv) *Are cold blooded animals*
- Which invertebrate is this?
- A. Amphibian B. Reptile
C. Fish D. Bird
14. Which one of the following does not apply to paddocking?
- A. Pasture land is divided into paddocks
B. There are gates to allow movement of animals
C. Temporary or movable fences are used
D. Permanent fences are used
15. What is the name of the below instrument?



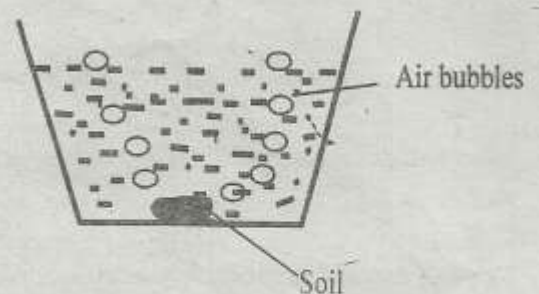
- A. Air thermometer B. Liquid thermometer
C. Barometer D. Hygrometer
16. For efficient work of the above instrument is
- A. the bottle should be bigger than that
B. the scale should be narrower
C. the tube should be narrower
D. the coloured water should not be used
17. Which of the following statements is false

about planets?

- A. Planets rotate on their own axis
B. Planets revolve round the sun
C. The sun revolves round the planets
D. We see light from planets due to reflection
18. Which one of the following is wrong about nimbus clouds?
- A. They are found high in the sky
B. They are dark grey in colour
C. They are found low in the sky
D. They often bring rain
19. Which one of the following cannot make up humus?
- A. Decaying animals remains
B. Decaying plant remains
C. Plastics and broken glasses
D. Kitchen wastes and remains
20. The soil that can be used to make long ribbons also
- A. has a rough texture B. cracks when dry
C. has low capillarity D. has large air spaces
21. The type of erosion can be prevented by



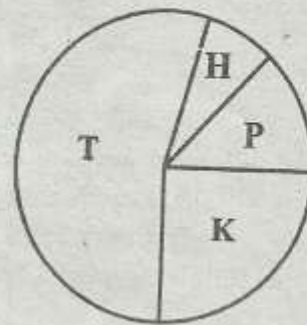
- A. contour ploughing B. cover crops
C. mulching D. terraces
22. The experiment below shows that soil has



- A. water B. air

- C. bubbles D. humus
23. A soil that has high water retention ability also has
- fine texture
 - low capillarity
 - large air space
 - large soil particles
24. The **main** reason why we should conserve the environment is to
- protect it for future generations
 - avoid its usage
 - get meat from worldwide
 - protect plants and animals only
25. How can we prevent pollution of soil by fertilisers?
- By applying much organic manure
 - By applying controlled amounts of fertilisers
 - By not using fertilisers
 - By only using inorganic fertilisers
26. Which one of the following foodstuffs is **not** preserved by freezing?
- Meat
 - Bread
 - Vegetables
 - Fruits
27. Three of the following must be included in a balanced diet **except**
- vitamins
 - mineral suppliments
 - proteins
 - carbohydrates
28. HIV and AIDS patients should avoid all the following **except**
- ARVs
 - Spiced foods
 - Smoking
 - Khat
29. Convection is a method of heat transfer through
- gases only
 - liwuids and solids
 - liquids and gases
 - gases and solids
30. A rainbow forms through _____ and _____ of light.
- refraction, refraction
 - reflection and refraction
 - refraction and dispersion
 - dispersion and reflection

Which gas is used in the advertisements?



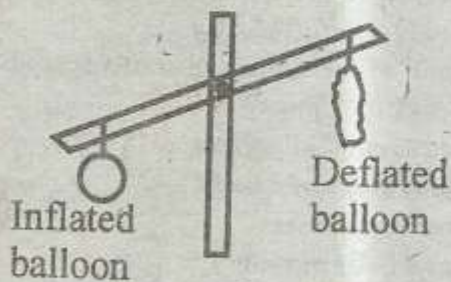
- K
- P
- H
- T

32. Which one of the following causes the difference in day and night?
- rotation
 - revolution
 - tifting
 - movement
33. What is the **main** difference between a seed and a fruit?
- A seed has two scars
 - A fruit has two scars
 - A fruit has one scar
 - A seed is a fertilised ovary
34. Which one of the following statements about force is **not** true force?
- Is measured in kilograms
 - Changes shape of a body
 - Opposes movement
 - Makes a body move
35. The second DPT vaccine is administered at the age of
- 9 months
 - 6 weeks
 - 14 weeks
 - 1 weeks
36. The components of blood that helps in clotting is
- platelets
 - plasma
 - white blood cells
 - red blood cells
37. A child who does not get enough proteins is likely to suffer from
- rickets
 - marasmus
 - kwashiorkor
 - anaemia
38. The components of a balanced diet that is

1. The pie chart below shows composition of gas

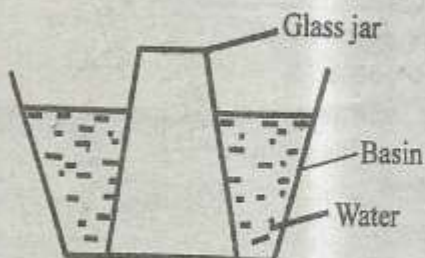
important for developing bones is

- A. minerals
 - B. fats and oils
 - C. vitamins
 - D. proteins
39. Which one of the following weeds is edible?
- A. Wandering jew
 - B. Double thorn
 - C. Pigweed
 - D. Coach grass
40. Which one of the following plants has root nodules?
- A. Green grams
 - B. Maize
 - C. Carrot
 - D. Irish potato
41. When an object is thrown up in the air it falls because it
- A. pulled by the gravity
 - B. exerts pressure
 - C. is resisted by air
 - D. is as heavy as air
42. Study diagram below.



This experiment shows that

- A. air occupies space
 - B. air exerts pressure
 - C. air has weight
 - D. air lacks mass
43. What can he do for water to enter the glass?



- A. Make a hole at the bottom of the basin
- B. Put a dry paper at the bottom of the glass
- C. Add water in the basin

D. make a hole at the bottom of the tin

44. Which one of the following lists comprises animals in the same group?
- A. Turtle, Lizard, newt
 - B. Bat, eagle, hawk
 - C. Whale, bat, monkey
 - D. Crocodile, toad, tortoise
45. Which one of the following is not necessary for photosynthesis?
- A. Oxygen
 - B. Carbon dioxide
 - C. Chlorophyll
 - D. Water
46. The following statements are true about all states of matter except
- A. have mass
 - B. expand on heating
 - C. occupy space
 - D. have definite size
47. Physical and emotional changes in adolescent are caused by
- A. poor nutrition
 - B. hormones in the body
 - C. environment factors
 - D. strictness of the parents
48. Which food is never absorbed in the ileum?
- A. Water
 - B. Proteins
 - C. Carbohydrates
 - D. Vitamins
49. Which of the following is the role of the pancreatic juice?
- A. Further breakdown of food
 - B. preventing sugar diseases
 - C. digestion of fats and oils
 - D. food absorption
50. Which one of the following does not happen when we breath out?
- A. Ribs move downwards and inwards
 - B. Diaphragm moves upwards
 - C. Chest volume increases
 - D. Lungs contract

