

STD 5 END TERM 2 EXAM 2019

SCIENCE

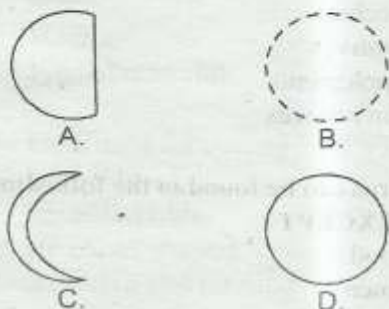
1. The two MAIN types of crops are
- A. oil and fibre
 - B. food and cash
 - C. fibre and crop
 - D. food and beverage

2. Which one of the following components of soil consists of decaying plants and animals?
- A. Air
 - B. Water
 - C. Organic matter
 - D. Inorganic matter

3. If water is added to a container of dry soil, the level of water slowly reduces because of
- A. water
 - B. plants
 - C. living things
 - D. air

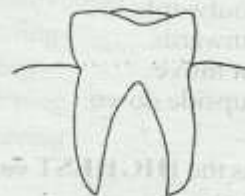
4. Eating of a diet that is not balanced and is not enough can lead to
- A. rickets
 - B. anaemia
 - C. marasmus
 - D. kwashiorkor

5. Which one of the following shapes of the moon is a full moon?



6. When making water clean one of the following comes first. Which one?
- A. Filtering water
 - B. Boiling water
 - C. Warming water
 - D. Storing water

7. The type of tooth shown is



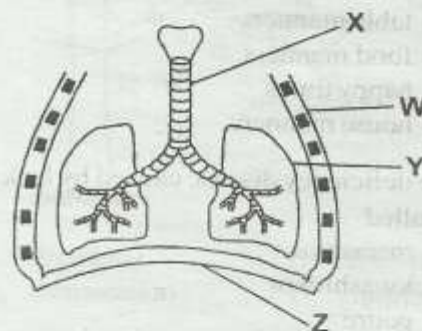
- A. incisor
- B. canine
- C. molar
- D. pre-molar

8. When the arrow head of a windvane points South, wind is blowing from
- A. South
 - B. North
 - C. East
 - D. West

9. Which of the following is NOT a fungi?
- A. Fern
 - B. Penicillin
 - C. Mushroom
 - D. Toadstool

10. The heat from the sun reaches the earth by
- A. convection
 - B. radiation
 - C. conduction
 - D. reflection

Use the diagram to answer question 11-13



11. Which part represents the glass tube in the breathing system model shown?
- A. X
 - B. Y
 - C. W
 - D. Z

12. The part marked Z is called

- A. ribs
- B. chest
- C. lungs
- D. diaphragm

13. When we breath in, the part labelled Y

- A. moves outwards.
- B. moves inwards.
- C. does not move.
- D. moves upside down.

14. Clay soil has the **HIGHEST** capillarity, this is because of its

- A. colour
- B. texture
- C. air
- D. the size of particles

15. Which one of the following is the **FIRST** stage of HIV infection?

- A. Full blown
- B. Asymptomatic
- C. Window
- D. Symptomatic

16. Which one of the following plants stores food in the stem?

- A. Onion
- B. Carrot
- C. Sweet potatoes
- D. Irish potatoes

17. The way we behave when taking meals is called

- A. table manners
- B. food manners
- C. happy times
- D. house manners

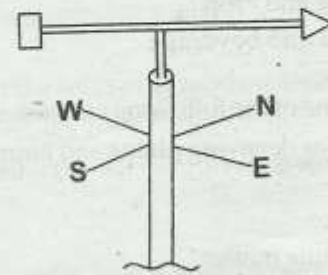
18. The deficiency disease caused by lack of iron is called

- A. marasmus
- B. kwashiokor
- C. goitre
- D. anaemia

19. Which of the following is an amphibian?

- A. Newt
- B. Slug
- C. Snake
- D. Mite

20. The weather instrument shown below is used to measure



- A. speed of wind only.
- B. direction of wind only.
- C. direction and speed of wind only.
- D. amount of wind in a particular place only.

21. The removal of undigested food from the body is called

- A. villi
- B. faeces
- C. digestion
- D. egestion

22. The type of medicine which is used to prevent diseases is known as

- A. vaccines
- B. curatives
- C. supplements
- D. pain relieves

23. HIV virus can be found in the following body fluids **EXCEPT**

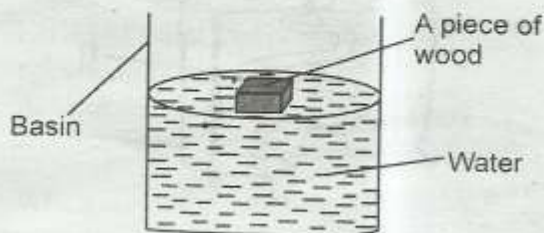
- A. blood
- B. semen
- C. urine
- D. saliva

24. The amount of medicine taken at a particular time is known as
- vaccine
 - dosage
 - injection
 - prescription

25. Exchange of gases in the human breathing system takes place in the
- trachea
 - bronchus
 - diaphragm
 - air sacs

26. Which of the following is **NOT** a true insect?
- Bees
 - Spiders
 - Butterflies
 - Houseflies

27. Which of the following factors made the wood to float?



- Shape
- Size
- Volume
- Type of material

28. The teeth used for cutting
- have ridges
 - have two roots
 - are chisel shaped
 - are sharp and pointed

29. Below are functions of the roots in a plant **EXCEPT**
- support
 - making food
 - food storage
 - absorption

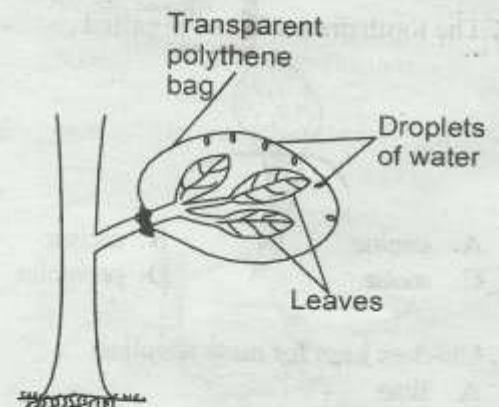
30. Which of the following **CANNOT** be seen at night?
- Sun
 - Moon
 - Clouds
 - Stars

31. A snail moves by
- crawling
 - gliding
 - galloping
 - slithering

32. Which type of food gives us **BOTH** energy giving and body building?
- Beans
 - Peas
 - Wheat
 - Groundnuts

33. The following are examples of poultry **EXCEPT** one. Which one is it?
- Duck
 - Chicken
 - Eagle
 - Turkey

34. Pupils in a class five Blue set out the experiment shown. Which process were they testing?



- Breathing
- Absorption
- Evaporation
- Transpiration

35. Which of the following is **NOT** a means of water transport?
- Ferry
 - Boat
 - Canoe
 - Motor cycle

36. Which animal removes solid waste in form of pellets?

- A. Dog
- B. Cow
- C. Goat
- D. Donkey

37. In the digestive absorption of mineral salts takes place in the

- A. mouth
- B. stomach
- C. small intestines
- D. large intestines.

38. Which type of soil has the roughest texture?

- A. Clay
- B. Sand
- C. Silt
- D. Loam

39. How does a snail protect itself?

- A. Coiling itself.
- B. It hides in its shell.
- C. Changing its colour.
- D. Rolling itself into a ball.

40. The following tools need oiling EXCEPT

- A. panga
- B. saw
- C. jembe
- D. stainless steel knife

41. The tooth drawn below is called



- A. canine
- B. incisor
- C. molar
- D. premolar

42. Chicken kept for meat is called

- A. litter
- B. layers
- C. broilers
- D. dairy

43. Expiry date is the date

- A. show prescription.
- B. before which medicine should be used.
- C. after which medicine should not be used
- D. show the date the medicine was manufactured.

44. The small holes in leaves are called

- A. stalk
- B. air sacs
- C. chlorophyll
- D. stomata

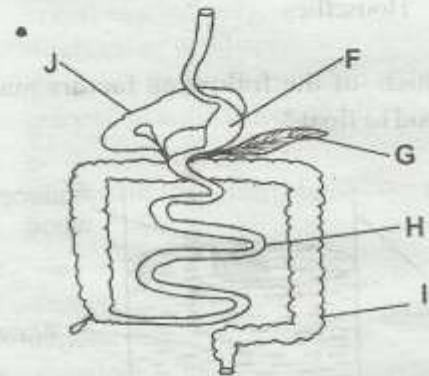
45. The following are modes of transmission of HIV/AIDS. Which one is NOT?

- A. Mosquito bites.
- B. Sexual intercourse.
- C. Blood transfusion
- D. Sharing piercing tools.

46. Which of the following produces natural light at night?

- A. Firefly
- B. Candle
- C. Torch
- D. Sun

Study the diagram below and answer question 47-50



47. The part labelled H is

- A. lungs
- B. diaphragm
- C. large intestines
- D. small intestines

48. The part marked G is

- A. pancreas
- B. liver
- C. stomach
- D. colon

49. Absorption of the undigested food and mineral water is done at the part marked

- A. J
- B. F
- C. G
- D. I

50. Which one of the following is NOT a source of heat?

- A. Gas
- B. Torch
- C. Sun
- D. Electricity